

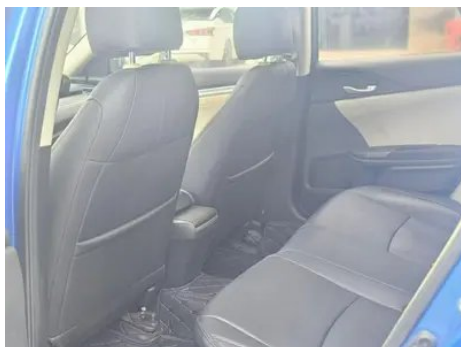
# Vehicle Detail Report

## Honda Civic 2016 180TURBO CVT Comfort Edition

### Basic Information

Brand	Honda
Mileage	40,000 km
Color	Blue
First Registration	2018-03-01
Transfer Count	0

### Vehicle Images





## Vehicle Condition

1. Inner side of left B-pillar, Dent. 2. Inner side of right B-pillar, Scratch. 3. Inner side of right C-pillar, Scratch. 4. Spare wheel well, Soiling. 5. Headliner, Soiling. 6. Left rear quarter panel, Paint repair, Body panel repair. 7. Right rear quarter panel, Scratch, Scrape, Paint repair, Body panel repair. 8. Headliner, Soiling. 9. Body floor pan, Crack, Modified perforation (Not accident-related).

## Configuration Information

### Model Information

<b>Model Name</b>	Honda Civic 2016 180TURBO CVT Comfort Edition
<b>Launch Date</b>	2016.11

### Basic parameters

<b>Vehicle Class</b>	compact car
<b>Energy Type</b>	Gasoline
<b>Maximum Power (kW)</b>	92
<b>Maximum Torque (N·m)</b>	173
<b>Transmission</b>	CVT continuously variable transmission
<b>Body Type</b>	Sedan
<b>Engine</b>	1.0L 125 hp L3
<b>Dimensions (L×W×H) (mm)</b>	4649*1800*1416
<b>Official 0-100 km/h Acceleration (s)</b>	11.3
<b>Top Speed (km/h)</b>	200
<b>Curb Weight (kg)</b>	1266
<b>Maximum Gross Weight (kg)</b>	-
<b>NEDC Combined Fuel Consumption (L/100km)</b>	5
<b>Measured 0-100 km/h Acceleration (s)</b>	10.76
<b>Measured 100-0 km/h Braking Distance (m)</b>	40.72

## Basic parameters (continued)

<b>Real-world Fuel Consumption (L/100km)</b>	6
--	---

## engine

<b>Engine Model</b>	P10A1
<b>Displacement (mL)</b>	988
<b>Displacement (L)</b>	1.0
<b>Induction Type</b>	Turbocharging
<b>Cylinder Arrangement</b>	L
<b>Number of Cylinders</b>	3
<b>Valves per Cylinder</b>	4
<b>Compression Ratio</b>	10.04
<b>Valve Train</b>	DOHC
<b>Bore (mm)</b>	73
<b>Stroke (mm)</b>	78.7
<b>Maximum Power (PS)</b>	125
<b>Max Power Speed (rpm)</b>	5500
<b>Max Torque Speed (rpm)</b>	2000-4500
<b>Maximum net power (kW)</b>	-
<b>Fuel Grade</b>	92.
<b>Fuel Delivery System</b>	Direct injection
<b>Cylinder Head Material</b>	Aluminum alloy
<b>Cylinder Block Material</b>	Aluminum alloy

## Screen/System

<b>Bluetooth/In-car Phone</b>	•
-------------------------------	---

## Body

<b>Length (mm)</b>	4649
<b>Width (mm)</b>	1800
<b>Height (mm)</b>	1416
<b>Wheelbase (mm)</b>	2700
<b>Front Track (mm)</b>	1547
<b>Rear Track (mm)</b>	1563
<b>Ground Clearance (Fully Loaded) (mm)</b>	110
<b>Door Opening Type</b>	-
<b>Number of Doors</b>	4

## Body (continued)

<b>Number of Seats</b>	5
<b>Fuel Tank Capacity (L)</b>	47
<b>Trunk volume (L)</b>	-
<b>Drag Coefficient (Cd)</b>	-

## Gearbox

<b>Abbreviation</b>	CVT continuously variable transmission
<b>Number of Gears</b>	Continuously variable transmission
<b>Transmission Type</b>	Continuously Variable Transmission (CVT)

## Chassis steering

<b>Drive Type</b>	Front-engine, Front-wheel drive (FF)
<b>Front Suspension Type</b>	MacPherson strut independent suspension
<b>Rear Suspension Type</b>	Multi-link independent suspension
<b>Power Steering Type</b>	Electric power assist
<b>Vehicle structure</b>	bearing type

## Seat Configuration

<b>Seat Material</b>	<ul style="list-style-type: none"><li>• Fabric</li></ul>
<b>Main seat adjustment</b>	<ul style="list-style-type: none"><li>• Front and rear adjustment;</li><li>• Backrest adjustment;</li><li>• Height adjustment (2 directions)</li></ul>
<b>Co-seat adjustment method</b>	<ul style="list-style-type: none"><li>• Front and rear adjustment;</li><li>• Backrest adjustment</li></ul>
<b>Electric adjustment of driver's seat and passenger seat</b>	-
<b>Front passenger seat rear adjustable buttons</b>	-
<b>Front/rear center armrest</b>	Front •/Rear
<b>Rear cup holder</b>	-

## Active safety

<b>Anti-lock Braking System (ABS)</b>	<ul style="list-style-type: none"><li>•</li></ul>
<b>Electronic Brakeforce Distribution (EBD/CBC)</b>	<ul style="list-style-type: none"><li>•</li></ul>
<b>Brake Assist System (EBA/BAS/BA)</b>	<ul style="list-style-type: none"><li>•</li></ul>

## Active safety (continued)

<b>Traction Control System (ASR/TCS/TRC)</b>	•
<b>Electronic Stability Control (ESC/ESP/DSC)</b>	•
<b>Tire Pressure Monitoring System (TPMS)</b>	• Tire pressure alarm
<b>Seat Belt Reminder</b>	• Front row
<b>ISOFIX Child Seat Anchors</b>	•
<b>Lane Departure Warning System (LDWS)</b>	-
<b>Autonomous Emergency Braking (AEB)</b>	-
<b>Driver Fatigue Detection</b>	-

## Air conditioning/refrigerator

<b>Air conditioning temperature control method</b>	• Manual air conditioning
<b>Rear Independent Climate Control</b>	-
<b>Rear seat air vents</b>	-
<b>Temperature zone control</b>	-
<b>Car air purifier</b>	-
<b>In-cabin PM2.5 Filter</b>	-

## Passive safety

<b>Driver/passenger airbag</b>	Main •/Sub •
<b>Front/rear side airbags</b>	-
<b>Front/rear head airbags (curtain airbags)</b>	-

## Wheel brake

<b>Front Brake Type</b>	Ventilation, Disc-type
<b>Rear Brake Type</b>	Disc-type
<b>Parking brake type</b>	Electronic parking
<b>Front Tire Size</b>	215/55 R16
<b>Rear Tire Size</b>	215/55 R16
<b>Spare Tire Size</b>	Non-full size

## Audio/Interior Lighting

<b>Number of speakers</b>	• 2 Horns
---------------------------	-----------

## Driving functions

## Driving functions (continued)

<b>Navigation traffic information display</b>	-
<b>Lane assist</b>	-
<b>Lane Keeping Assist System</b>	-
<b>Satellite navigation system</b>	-
<b>Parking Assist</b>	-

## Exterior lighting

<b>Low beam light source</b>	• Halogen
<b>High beam light source</b>	• Halogen
<b>LED daytime running lights</b>	•
<b>Adaptive high and low beam</b>	-
<b>Automatic headlights</b>	-
<b>Front fog lights</b>	• Halogen
<b>Height-adjustable headlights</b>	•
<b>Headlight Delay Off</b>	•

## Exterior mirrors

<b>Exterior mirror function</b>	• Electric adjustment
---------------------------------	-----------------------

## Appearance/anti-theft

<b>Rim material</b>	• Aluminum alloy
<b>Electric trunk</b>	-
<b>Electronic engine immobilizer</b>	•
<b>Central locking system in the car</b>	•
<b>Key Type</b>	• Remote key
<b>Keyless start system</b>	-

## Skylight/Glass

<b>Sunroof Type</b>	• Electric sunroof
<b>Front/rear electric windows</b>	Front •/Back •
<b>One-touch window lifting function</b>	• Front row
<b>Window anti-pinch function</b>	•

## Skylight/Glass (continued)

<b>Car makeup mirror</b>	<ul style="list-style-type: none"><li>• Main driving position;</li><li>• First officer</li></ul>
<b>Rear wiper</b>	-

## Interior and exterior color

<b>Exterior Color</b>	Dazzling blue:#1650BE; Pearl white:#F0F0F0; Dark gold blue:#14255B; Color crystal black:#000000; Amber orange:#CD7D41; Pull red:#B20101; Shenghui Silver:#ABABAB
<b>Interior Color</b>	Black, Beige:#000000/#E0BF62, Black, #000000

## Steering wheel/interior mirror

<b>Steering Wheel Material</b>	<ul style="list-style-type: none"><li>• Plastic</li></ul>
<b>Steering wheel position adjustment</b>	<ul style="list-style-type: none"><li>• Manual up and down front and rear adjustment</li></ul>
<b>Multi-function steering wheel</b>	<ul style="list-style-type: none"><li>•</li></ul>
<b>Heated Steering Wheel</b>	-
<b>Steering wheel memory</b>	-
<b>Trip computer display screen</b>	<ul style="list-style-type: none"><li>• Monochrome</li></ul>
<b>Full LCD instrument panel</b>	-
<b>Interior rearview mirror function</b>	<ul style="list-style-type: none"><li>• Manual anti-glare</li></ul>

## Intelligent configuration

<b>Connected Car Services</b>	-
<b>OTA Updates</b>	-

## Driving Control

<b>Driving mode switch</b>	<ul style="list-style-type: none"><li>• Movement,</li><li>• Economy</li></ul>
<b>Automatic parking</b>	<ul style="list-style-type: none"><li>•</li></ul>
<b>Hill start assist</b>	<ul style="list-style-type: none"><li>•</li></ul>
<b>Variable steering ratio</b>	<ul style="list-style-type: none"><li>•</li></ul>
<b>Engine start-stop technology</b>	<ul style="list-style-type: none"><li>•</li></ul>

## Driving Hardware

<b>Front/rear parking radar</b>	-
---------------------------------	---

## In-car charging

<b>Multimedia/charging port</b>	<ul style="list-style-type: none"><li>•USB</li></ul>
---------------------------------	--

## In-car charging (continued)

<b>Number of USB/Type-C ports</b>	• Front row, 2 pieces
-----------------------------------	-----------------------

## Optional Package

<b>Optional Package</b>	Sports suit (10000 yuan; Including: Mugen sports kit)
-------------------------	---

---

"●" = Standard equipment

"-" = Not available

"○" = Optional equipment.

Note: These are Chinese market vehicles. Warranty coverage is not available outside of China.