

Vehicle Detail Report

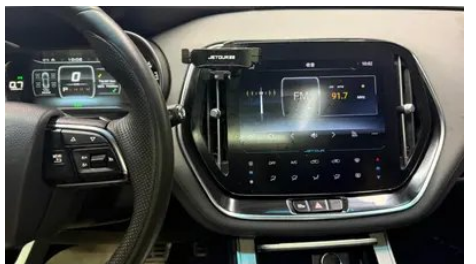
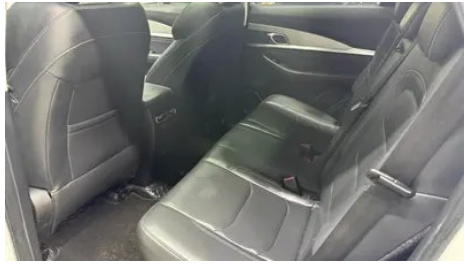
Jetour X70 2020 1.5T DCT Yue Hline Edition 7 seat

Basic Information

Brand	Jetour
Mileage	74,200 km
Color	White
First Registration	2020-08-01
Transfer Count	0

Vehicle Images







Vehicle Condition

1. Driver's seat rails and frame, Signs of removal. 2. Front passenger seat rails and frame, Signs of removal.

Configuration Information

Model Information

Model Name	Jetour X70 2020 1.5T DCT Yue Hline Edition 7 seat
Launch Date	2019.08

Basic parameters

Vehicle Class	Mid-size SUV
Energy Type	Gasoline
Maximum Power (kW)	115
Maximum Torque (N·m)	230
Transmission	6-speed dry dual clutch
Body Type	SUV
Engine	1.5T 156 horsepower L4
Dimensions (L×W×H) (mm)	4720*1900*1710
Official 0-100 km/h Acceleration (s)	-
Top Speed (km/h)	180
Curb Weight (kg)	1565
Maximum Gross Weight (kg)	-
NEDC Combined Fuel Consumption (L/100km)	7.6

engine

Engine Model	SQRE4T15C
Displacement (mL)	1498
Displacement (L)	1.5
Induction Type	Turbocharging
Cylinder Arrangement	L

engine (continued)

Number of Cylinders	4
Valves per Cylinder	4
Compression Ratio	9.5
Valve Train	DOHC
Bore (mm)	77
Stroke (mm)	80.5
Maximum Power (PS)	156
Max Power Speed (rpm)	5500
Max Torque Speed (rpm)	1750-4000
Maximum net power (kW)	108
Fuel Grade	92.
Fuel Delivery System	Multi-point EFI
Cylinder Head Material	Aluminum alloy
Cylinder Block Material	Cast iron
Engine layout	Horizontal
Engine-specific technologies	DVVT

Screen/System

Central control color screen	<ul style="list-style-type: none">• Touch LCD screen
Infotainment Screen Size	<ul style="list-style-type: none">• 10.1 inches
Bluetooth/In-car Phone	<ul style="list-style-type: none">•
Smartphone Integration/Mirroring	<ul style="list-style-type: none">• Baidu CarLife support

Body

Length (mm)	4720
Width (mm)	1900
Height (mm)	1710
Wheelbase (mm)	2745
Front Track (mm)	1600
Rear Track (mm)	1595
Door Opening Type	swing door
Number of Doors	5
Number of Seats	7
Fuel Tank Capacity (L)	55

Body (continued)

Trunk volume (L)	89-1680
Drag Coefficient (Cd)	-
Approach Angle (°)	21
Departure Angle (°)	20

Gearbox

Abbreviation	6-speed dry dual clutch
Number of Gears	6
Transmission Type	Dry Dual-Clutch Transmission (DCT)

Chassis steering

Drive Type	Front-engine, Front-wheel drive (FF)
Front Suspension Type	MacPherson independent suspension
Rear Suspension Type	Multi-link independent suspension
Power Steering Type	Electric power assistance
Vehicle structure	bearing type

Seat Configuration

Seat Material	<ul style="list-style-type: none">• Imitation leather
Main seat adjustment	<ul style="list-style-type: none">• Front and rear adjustment;• Backrest adjustment;• Height adjustment (2-way)
Co-seat adjustment method	<ul style="list-style-type: none">• Front and rear adjustment;• Backrest adjustment
Electric adjustment of driver's seat and passenger seat	-
Front passenger seat rear adjustable buttons	-
Second row seat adjustment	<ul style="list-style-type: none">• Front and rear adjustment;• Backrest adjustment
Rear seat folding	<ul style="list-style-type: none">• Proportional down
Front/rear center armrest	Front •/Rear •
Rear cup holder	<ul style="list-style-type: none">•
Seat Layout	•2-3-2

Active safety

Anti-lock Braking System (ABS)	<ul style="list-style-type: none">•
Electronic Brakeforce Distribution (EBD/CBC)	<ul style="list-style-type: none">•

Active safety (continued)

Brake Assist System (EBA/BAS/BA)	•
Traction Control System (ASR/TCS/TRC)	•
Electronic Stability Control (ESC/ESP/DSC)	•
Tire Pressure Monitoring System (TPMS)	• Tire pressure display
Seat Belt Reminder	• Main driving position
ISOFIX Child Seat Anchors	•
Lane Departure Warning System (LDWS)	•
Autonomous Emergency Braking (AEB)	-
Driver Fatigue Detection	-
Built-in Dashcam	•

Air conditioning/refrigerator

Air conditioning temperature control method	• Manual air conditioning
Rear Independent Climate Control	-
Rear seat air vents	•
Temperature zone control	-
Car air purifier	-
In-cabin PM2.5 Filter	-

Passive safety

Driver/passenger airbag	Main •/Deputy •
Front/rear side airbags	Front •/Rear-
Front/rear head airbags (curtain airbags)	-

Wheel brake

Front Brake Type	Ventilation disc
Rear Brake Type	Disc
Parking brake type	Electronic Parking
Front Tire Size	235/60 R18
Rear Tire Size	235/60 R18
Spare Tire Size	Not full-size

Audio/Interior Lighting

Number of speakers	<ul style="list-style-type: none">• 6 speakers
---------------------------	--

Driving functions

Navigation traffic information display	-
Lane assist	<ul style="list-style-type: none">•
Lane Keeping Assist System	-
Cruise control system	<ul style="list-style-type: none">• Cruise control
Satellite navigation system	-
Parking Assist	-

Exterior lighting

Low beam light source	<ul style="list-style-type: none">• Halogen
High beam light source	<ul style="list-style-type: none">• Halogen
LED daytime running lights	<ul style="list-style-type: none">•
Adaptive high and low beam	-
Automatic headlights	-
Height-adjustable headlights	<ul style="list-style-type: none">•
Headlight Delay Off	-
Turn signal lamp	<ul style="list-style-type: none">•

Exterior mirrors

Exterior mirror function	<ul style="list-style-type: none">• Electric adjustment;• Electric folding;• Rearview mirror heating;• Automatic folding when locked
---------------------------------	---

Appearance/anti-theft

Rim material	<ul style="list-style-type: none">• Aluminum alloy
Electronic engine immobilizer	<ul style="list-style-type: none">•
Central locking system in the car	<ul style="list-style-type: none">•
Key Type	<ul style="list-style-type: none">• Remote key
Keyless start system	<ul style="list-style-type: none">•
Keyless entry function	<ul style="list-style-type: none">• Driving position
Roof rack	<ul style="list-style-type: none">•

Skylight/Glass

Skylight/Glass (continued)

Sunroof Type	• Openable panoramic sunroof
Front/rear electric windows	Front •/Rear •
One-touch window lifting function	• Full vehicle
Window anti-pinch function	•
Car makeup mirror	• Main driving position; • First officer
Rear wiper	•

Interior and exterior color

Exterior Color	Glacier White #F0F0F0 Earth Brown #242226 Amber Orange #EA640B Volcano Red #DF503D Aurora Blue #42B1F7 Beach Gold #59492D
Interior Color	Black:#000000

Steering wheel/interior mirror

Steering Wheel Material	• Cortex
Steering wheel position adjustment	• Manual up and down front and rear adjustment
Multi-function steering wheel	•
Heated Steering Wheel	-
Steering wheel memory	-
Trip computer display screen	• Color
Full LCD instrument panel	•
LCD instrument size	• 12.3 inches
Interior rearview mirror function	• Manual anti-glare

Intelligent configuration

Connected Car Services	-
OTA Updates	-

Driving Control

Driving mode switch	• Movement; • Economy
Automatic parking	•
Hill start assist	•

Driving Hardware

Front/rear parking radar	Front-/Rear •
---------------------------------	---------------

Driving Hardware (continued)

Driving Assistance Camera System	• 360-degree panoramic image
---	------------------------------

In-car charging

Multimedia/charging port	•USB
Number of USB/Type-C ports	• 2 in the front row/2 in the back row
Mobile phone wireless charging function	• Front row
Luggage compartment 12V power socket	•

"●" = Standard equipment

"-" = Not available

"○" = Optional equipment.

Note: These are Chinese market vehicles. Warranty coverage is not available outside of China.