

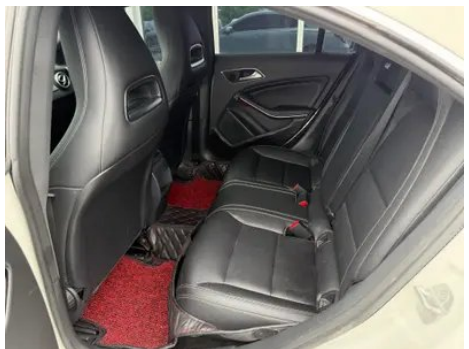
Vehicle Detail Report

Mercedes-Benz CLA 2016 CLA 200 Dynamic

Basic Information

Brand	Mercedes-Benz
Mileage	167,000 km
Color	White
First Registration	2017-09-01
Transfer Count	0

Vehicle Images





Vehicle Condition

1. Inner side of left B-pillar, Non-accident-related deformation. 2. Left rear quarter panel, Paint repair, Body panel repair. 3. Right rear quarter panel, Paint repair, Body panel repair.

Configuration Information

Model Information

Model Name	Mercedes-Benz CLA 2016 CLA 200 Dynamic
Launch Date	2015.12

Basic parameters

Vehicle Class	compact car
Energy Type	Gasoline
Maximum Power (kW)	115
Maximum Torque (N·m)	250
Transmission	7-speed wet dual-clutch
Body Type	Sedan
Engine	1.6L 156 hp L4
Dimensions (L×W×H) (mm)	4635*1777*1440
Official 0-100 km/h Acceleration (s)	9
Top Speed (km/h)	230
Curb Weight (kg)	-
Maximum Gross Weight (kg)	-

Basic parameters (continued)

NEDC Combined Fuel Consumption (L/100km)	6
---	---

engine

Engine Model	M270
Displacement (mL)	1595
Displacement (L)	1.6
Induction Type	Turbocharging
Cylinder Arrangement	L
Number of Cylinders	4
Valves per Cylinder	4
Valve Train	DOHC
Maximum Power (PS)	156
Max Power Speed (rpm)	5500
Max Torque Speed (rpm)	1250-4000
Maximum net power (kW)	-
Fuel Grade	95.
Fuel Delivery System	Direct injection
Cylinder Head Material	Aluminum alloy
Cylinder Block Material	Aluminum alloy

Screen/System

Central control color screen	<ul style="list-style-type: none">•
Bluetooth/In-car Phone	<ul style="list-style-type: none">•
In-car CD/DVD Player	<ul style="list-style-type: none">• Multi-disc CD system

Body

Length (mm)	4635
Width (mm)	1777
Height (mm)	1440
Wheelbase (mm)	2700
Front Track (mm)	-
Rear Track (mm)	-
Door Opening Type	-
Number of Doors	4
Number of Seats	5
Fuel Tank Capacity (L)	56

Body (continued)

Trunk volume (L)	470
Drag Coefficient (Cd)	-

Gearbox

Abbreviation	7-speed wet dual-clutch
Number of Gears	7
Transmission Type	Wet Dual-Clutch Transmission (DCT)

Chassis steering

Drive Type	Front-engine, Front-wheel drive (FF)
Front Suspension Type	MacPherson independent suspension
Rear Suspension Type	Multi-link independent suspension
Power Steering Type	Electric power assistance
Vehicle structure	bearing type

Seat Configuration

Main seat adjustment	<ul style="list-style-type: none">• Front and rear adjustment;• Backrest adjustment;• Height adjustment (2-way)
Co-seat adjustment method	<ul style="list-style-type: none">• Front and rear adjustment;• Backrest adjustment
Electric adjustment of driver's seat and passenger seat	-
Front seat functions	○ Heating
Front passenger seat rear adjustable buttons	-
Rear seat folding	<ul style="list-style-type: none">• Proportional down
Front/rear center armrest	Front •/Rear-
Rear cup holder	-
Sports style seats	<ul style="list-style-type: none">•

Active safety

Anti-lock Braking System (ABS)	<ul style="list-style-type: none">•
Electronic Brakeforce Distribution (EBD/CBC)	<ul style="list-style-type: none">•
Brake Assist System (EBA/BAS/BA)	<ul style="list-style-type: none">•
Traction Control System (ASR/TCS/TRC)	<ul style="list-style-type: none">•

Active safety (continued)

Electronic Stability Control (ESC/ESP/DSC)	•
Tire Pressure Monitoring System (TPMS)	•
Seat Belt Reminder	•
ISOFIX Child Seat Anchors	•
Lane Departure Warning System (LDWS)	○
Autonomous Emergency Braking (AEB)	•
Driver Fatigue Detection	•
Emergency Call System (eCall)	○

Air conditioning/refrigerator

Air conditioning temperature control method	• Manual air conditioning
Rear Independent Climate Control	-
Rear seat air vents	-
Temperature zone control	-
Car air purifier	-
In-cabin PM2.5 Filter	-

Passive safety

Driver/passenger airbag	Main •/Deputy •
Front/rear side airbags	Front •/Rear •
Front/rear head airbags (curtain airbags)	Front •/Rear •
Run-flat tires	•
Knee airbag	• Main driver knee airbag

Wheel brake

Front Brake Type	Ventilation disc
Rear Brake Type	Disc
Parking brake type	Electronic Parking
Front Tire Size	225/40 R18
Rear Tire Size	225/40 R18
Spare Tire Size	None

Audio/Interior Lighting

Audio/Interior Lighting (continued)

Speaker Brand Name	<input type="radio"/> Harman/Kardon Harman Kardon
Number of speakers	<input type="radio"/> ≥12 speakers; <input type="radio"/> 6-7 speakers
Interior ambient lighting	<input type="radio"/>

Driving functions

Navigation traffic information display	-
Lane assist	<input type="radio"/>
Lane Keeping Assist System	-
Cruise control system	<input type="radio"/> Cruise control
Satellite navigation system	<input type="radio"/>
Parking Assist	<input type="radio"/>

Exterior lighting

Low beam light source	<input type="radio"/> Halogen
High beam light source	<input type="radio"/> Halogen
LED daytime running lights	-
Adaptive high and low beam	-
Automatic headlights	<input type="radio"/>
Height-adjustable headlights	<input type="radio"/>
Headlight Delay Off	-

Exterior mirrors

Exterior mirror function	<input type="radio"/> Electric adjustment; <input type="radio"/> Electric folding; <input type="radio"/> Mirror memory; <input type="radio"/> Mirror heating; <input type="radio"/> Automatic anti-glare
---------------------------------	--

Appearance/anti-theft

Rim material	<input type="radio"/> Aluminum alloy
Electric trunk	-
Electronic engine immobilizer	<input type="radio"/>
Central locking system in the car	<input type="radio"/>
Key Type	<input type="radio"/> Remote key
Keyless start system	<input type="radio"/>
Frameless door design	<input type="radio"/>

Skylight/Glass

Skylight/Glass (continued)

Sunroof Type	• Panoramic sunroof
Front/rear electric windows	Front •/Rear •
One-touch window lifting function	• Full car
Window anti-pinch function	•
Car makeup mirror	•
Rear wiper	-

Interior and exterior color

Exterior Color	Cirrus white:#EDEBDE; Gem brown:#5A442D; Northern light purple:#644F7A; Arctic silver:#D7D7D5; Jupiter red:#921823; Mountain gray:#414047; Night black:#50483E; Universe black:#3C3847
Interior Color	Black: #000000; Black/Sahara Beige: #000000/#ACA27E; Black/Crystal Gray: #000000/#B8B9B3

Steering wheel/interior mirror

Steering Wheel Material	• Cortex
Steering wheel position adjustment	• Manual up and down front and rear adjustment
Multi-function steering wheel	•
Heated Steering Wheel	-
Steering wheel memory	-
Trip computer display screen	•
Full LCD instrument panel	-
Interior rearview mirror function	• Manual anti-glare
Steering Wheel Shift Paddles	•

Intelligent configuration

Connected Car Services	-
OTA Updates	-

Driving Control

Automatic parking	•
--------------------------	---

Driving Control (continued)

Hill start assist	•
Variable steering ratio	•
Engine start-stop technology	•

Driving Hardware

Front/rear parking radar	Front •/Rear •
Driving Assistance Camera System	○ Reversing image

In-car charging

Multimedia/charging port	•USB
---------------------------------	------

Optional Package

Optional Package	Zhixiang package (USD 1,176; Including: 8-inch TFT display screen, reversing image, heated front seat, rearview mirror assembly); Smart driving package (USD 1,176; Including: blind spot assist system, lane keeping assist system); Zhilian package (USD 1,324; Including: Garmin map navigation, Mercedes-Benz intelligent interconnection); Zhile package (USD 1,353; Including: harmanKardon Harman Kardon surround stereo sound system, lighting and visual components, ambient lighting system, available in 12 colors,)
-------------------------	---

"●" = Standard equipment

"-" = Not available

"○" = Optional equipment.

Note: These are Chinese market vehicles. Warranty coverage is not available outside of China.