

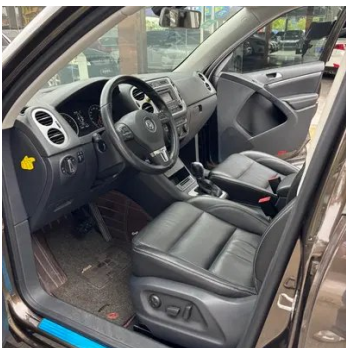
Vehicle Detail Report

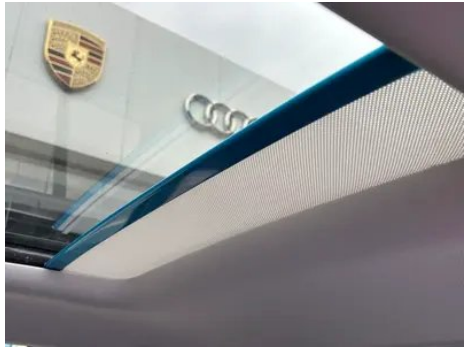
Volkswagen Tiguan 2017 300TSI Automatic Two-Drive Silk Road Comfort Edition

Basic Information

Brand	Volkswagen
Mileage	50,000 km
Color	Coffee color
First Registration	2019-07-01
Transfer Count	0

Vehicle Images







Vehicle Condition

1. Rear body panel, Deformation. 2. Left rear quarter panel, Paint repair, Body panel repair.

Configuration Information

Model Information

Model Name	Volkswagen Tiguan 2017 300TSI Automatic Two-Drive Silk Road Comfort Edition
Launch Date	2017.01

Basic parameters

Vehicle Class	Compact SUV
Energy Type	Gasoline
Maximum Power (kW)	118
Maximum Torque (N·m)	250
Transmission	6-speed manual integration
Body Type	SUV
Engine	1.8L 160 hp L4
Dimensions (L×W×H) (mm)	4506*1809*1685
Official 0-100 km/h Acceleration (s)	-
Top Speed (km/h)	192
Curb Weight (kg)	1600
Maximum Gross Weight (kg)	-
NEDC Combined Fuel Consumption (L/100km)	8.6

engine

Engine Model	EA888-CEA
Displacement (mL)	1798
Displacement (L)	1.8
Induction Type	Turbocharging

engine (continued)

Cylinder Arrangement	L
Number of Cylinders	4
Valves per Cylinder	4
Valve Train	DOHC
Maximum Power (PS)	160
Max Power Speed (rpm)	4500-6200
Max Torque Speed (rpm)	1500-4500
Maximum net power (kW)	-
Fuel Grade	95.
Fuel Delivery System	Direct injection
Cylinder Head Material	Aluminum alloy
Cylinder Block Material	Cast iron

Screen/System

Bluetooth/In-car Phone	<ul style="list-style-type: none">•
In-car CD/DVD Player	<ul style="list-style-type: none">• Single disc CD

Body

Length (mm)	4506
Width (mm)	1809
Height (mm)	1685
Wheelbase (mm)	2684
Front Track (mm)	-
Rear Track (mm)	-
Door Opening Type	-
Number of Doors	5
Number of Seats	5
Fuel Tank Capacity (L)	63
Trunk volume (L)	400-1530
Drag Coefficient (Cd)	-

Gearbox

Abbreviation	6-speed manual integration
Number of Gears	6
Transmission Type	Automatic Transmission with Manual Mode (AT)

Chassis steering

Chassis steering (continued)

Drive Type	Front-engine, Front-wheel drive (FF)
Front Suspension Type	MacPherson independent suspension
Rear Suspension Type	Multi-link independent suspension
Power Steering Type	Electric power assistance
Vehicle structure	bearing type

Seat Configuration

Seat Material	<ul style="list-style-type: none">• Leather
Main seat adjustment	<ul style="list-style-type: none">• Front and rear adjustment;• Backrest adjustment;• Height adjustment (4-way);• Lumbar support (4-way)
Co-seat adjustment method	<ul style="list-style-type: none">• Front and rear adjustment;• Backrest adjustment;• Height adjustment (2-way)
Electric adjustment of driver's seat and passenger seat	Main/Deputy-
Front passenger seat rear adjustable buttons	-
Second row seat adjustment	<ul style="list-style-type: none">• Front and rear adjustment;• Backrest adjustment
Rear seat folding	<ul style="list-style-type: none">• Proportional down
Front/rear center armrest	Front •/Rear •
Rear cup holder	<ul style="list-style-type: none">•

Active safety

Anti-lock Braking System (ABS)	<ul style="list-style-type: none">•
Electronic Brakeforce Distribution (EBD/CBC)	<ul style="list-style-type: none">•
Brake Assist System (EBA/BAS/BA)	<ul style="list-style-type: none">•
Traction Control System (ASR/TCS/TRC)	<ul style="list-style-type: none">•
Electronic Stability Control (ESC/ESP/DSC)	<ul style="list-style-type: none">•
Tire Pressure Monitoring System (TPMS)	<ul style="list-style-type: none">• Tire pressure alarm
Seat Belt Reminder	<ul style="list-style-type: none">• Front row
ISOFIX Child Seat Anchors	<ul style="list-style-type: none">•

Active safety (continued)

Lane Departure Warning System (LDWS)	-
Autonomous Emergency Braking (AEB)	-
Driver Fatigue Detection	-

Air conditioning/refrigerator

Air conditioning temperature control method	• Automatic air conditioning
Rear Independent Climate Control	-
Rear seat air vents	•
Temperature zone control	•
Car air purifier	-
In-cabin PM2.5 Filter	-

Passive safety

Driver/passenger airbag	Main •/Deputy •
Front/rear side airbags	Front •/Rear-
Front/rear head airbags (curtain airbags)	Front •/Rear •

Wheel brake

Front Brake Type	Ventilation disc
Rear Brake Type	Disc
Parking brake type	Electronic Parking
Front Tire Size	235/55 R17
Rear Tire Size	235/55 R17
Spare Tire Size	Not full-size

Audio/Interior Lighting

Number of speakers	• 8 speakers
---------------------------	--------------

Driving functions

Navigation traffic information display	-
Lane assist	-
Lane Keeping Assist System	-
Cruise control system	• Cruise control
Satellite navigation system	-

Driving functions (continued)

Parking Assist	-
-----------------------	---

Exterior lighting

Low beam light source	• Xenon
High beam light source	• Xenon
LED daytime running lights	-
Adaptive high and low beam	-
Automatic headlights	•
Front fog lights	• Halogen
Height-adjustable headlights	•
Headlight Delay Off	•

Exterior mirrors

Exterior mirror function	• Electric adjustment; • Mirror heating
---------------------------------	---

Appearance/anti-theft

Rim material	• Aluminum alloy
Electronic engine immobilizer	•
Central locking system in the car	•
Key Type	• Remote key
Keyless start system	-
Roof rack	•

Skylight/Glass

Sunroof Type	• Openable panoramic sunroof
Front/rear electric windows	Front •/Rear •
One-touch window lifting function	• Full vehicle
Window anti-pinch function	•
Car makeup mirror	• Main driver's lamp; • co-pilot's lamp
Rear wiper	•
Rain sensor wiper function	• Rainfall-sensing

Interior and exterior color

Interior and exterior color (continued)

Exterior Color	Aurora White:#FFFFFF; Junling Brown:#644336; Tianmo Gold:#AA953D; Basalt black:#000000; Rock wall brown:#563D1D
Interior Color	Cool elegant black:#000000; Black/Han Yami:#000000/#BDA166

Steering wheel/interior mirror

Steering Wheel Material	• Cortex
Steering wheel position adjustment	• Manual up and down front and rear adjustment
Multi-function steering wheel	•
Heated Steering Wheel	-
Steering wheel memory	-
Trip computer display screen	• Monochrome
Full LCD instrument panel	-
Interior rearview mirror function	• Manual anti-glare

Intelligent configuration

Connected Car Services	-
OTA Updates	-

Driving Control

Driving mode switch	• Movement
Automatic parking	•
Hill start assist	•

Driving Hardware

Front/rear parking radar	Front-/Rear •
---------------------------------	---------------

In-car charging

Multimedia/charging port	•USB;•AUX;•SD
Number of USB/Type-C ports	• 1 in the front row
220V/230V power supply	•
Luggage compartment 12V power socket	•

"●" = Standard equipment

"□" = Not available

"○" = Optional equipment.

Note: These are Chinese market vehicles. Warranty coverage is not available outside of China.