

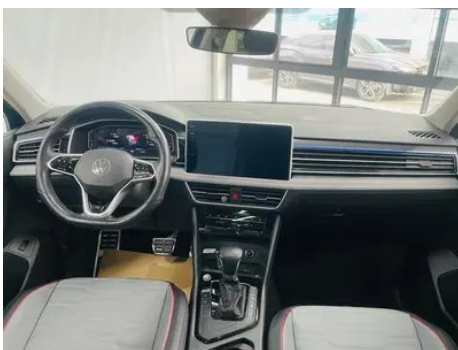
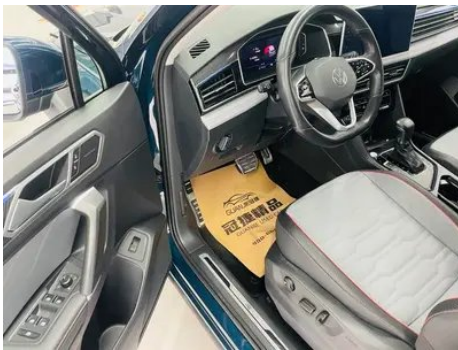
Vehicle Detail Report

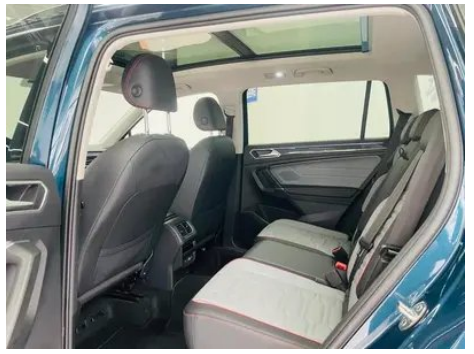
Volkswagen Tiguan L 2022 330TSI Automatic two-wheel drive R-Line Flagship Edition

Basic Information

| | |
|--------------------|------------|
| Brand | Volkswagen |
| Mileage | 32,800 km |
| Color | Blue |
| First Registration | 2022-06-01 |
| Transfer Count | 0 |

Vehicle Images





Vehicle Condition

1. Original metal body panels with factory paint.

Configuration Information

Model Information

| | | | |
|-------------------|-------------------|-------|---------|
| 大众汽车(VOLKSWAGEN)牌 | | | |
| 整车型号 | SVW64712CV | 乘坐人数 | 5 |
| 发动机型号 | DPL | 发动机排量 | 1984 mL |
| 最大允许总质量 | 2170kg | 制造年月 | 2022-02 |
| 发动机最大净功率 | 137 kW | 制造国 | 中国 |
| 车辆识别代号 | LSVZM60T3N2041496 | | |
| 上汽大众汽车有限公司制造 | | | |

Model Information (continued)

| | |
|--------------------|---|
| Model Name | Volkswagen Tiguan L 2022 330TSI Automatic two-wheel drive R-Line Flagship Edition |
| Launch Date | 2021.08 |

Basic parameters

| | |
|---|-------------------------|
| Vehicle Class | Mid-size SUV |
| Energy Type | Gasoline |
| Maximum Power (kW) | 137 |
| Maximum Torque (N·m) | 320 |
| Transmission | 7-speed wet dual-clutch |
| Body Type | SUV |
| Engine | 2.0T 186 horsepower L4 |
| Dimensions (L×W×H) (mm) | 4735*1859*1677 |
| Official 0-100 km/h Acceleration (s) | 8.8 |
| Top Speed (km/h) | 200 |
| Curb Weight (kg) | 1700 |
| Maximum Gross Weight (kg) | 2170 |
| NEDC Combined Fuel Consumption (L/100km) | 6.6 |
| WLTP Combined Fuel Consumption (L/100km) | 6.99 |

engine

| | |
|-------------------------------|---------------|
| Engine Model | EA888-DPL |
| Displacement (mL) | 1984 |
| Displacement (L) | 2.0 |
| Induction Type | Turbocharging |
| Cylinder Arrangement | L |
| Number of Cylinders | 4 |
| Valves per Cylinder | 4 |
| Valve Train | DOHC |
| Maximum Power (PS) | 186 |
| Max Power Speed (rpm) | 4100-6000 |
| Max Torque Speed (rpm) | 1500-4000 |
| Maximum net power (kW) | 137 |

engine (continued)

| | |
|--------------------------------|-----------------|
| Fuel Grade | 95. |
| Fuel Delivery System | Mixed injection |
| Cylinder Head Material | Aluminum alloy |
| Cylinder Block Material | Cast iron |
| Engine layout | Horizontal |

Screen/System

| | |
|---|--|
| Central control color screen | <ul style="list-style-type: none">• Touch LCD screen |
| Infotainment Screen Size | <ul style="list-style-type: none">• 12 inches |
| Bluetooth/In-car Phone | <ul style="list-style-type: none">• |
| Smartphone Integration/Mirroring | <ul style="list-style-type: none">• Apple CarPlay support;• Baidu CarLife support;• OEM smartphone integration/mirroring |
| Voice recognition control system | <ul style="list-style-type: none">• Multimedia system;• Navigation;• Telephone |

Body

| | |
|-------------------------------|------------|
| Length (mm) | 4735 |
| Width (mm) | 1859 |
| Height (mm) | 1677 |
| Wheelbase (mm) | 2791 |
| Front Track (mm) | 1582 |
| Rear Track (mm) | 1572 |
| Door Opening Type | swing door |
| Number of Doors | 5 |
| Number of Seats | 5 |
| Fuel Tank Capacity (L) | 60 |
| Trunk volume (L) | 495-1780 |
| Drag Coefficient (Cd) | - |
| Approach Angle (°) | 16 |
| Departure Angle (°) | 16 |

Gearbox

| | |
|--------------------------|------------------------------------|
| Abbreviation | 7-speed wet dual-clutch |
| Number of Gears | 7 |
| Transmission Type | Wet Dual-Clutch Transmission (DCT) |

Chassis steering

| | |
|-------------------|--------------------------------------|
| Drive Type | Front-engine, Front-wheel drive (FF) |
|-------------------|--------------------------------------|

Chassis steering (continued)

| | |
|------------------------------|-----------------------------------|
| Front Suspension Type | MacPherson independent suspension |
| Rear Suspension Type | Multi-link independent suspension |
| Power Steering Type | Electric power assistance |
| Vehicle structure | bearing type |

Seat Configuration

| | |
|--|---|
| Seat Material | • Leather |
| Main seat adjustment | • Front and rear adjustment; • Backrest adjustment; • Height adjustment (4-way); • Lumbar support (4-way) |
| Co-seat adjustment method | • Front and rear adjustment; • Backrest adjustment; • Height adjustment (4-way); • Lumbar support (4-way) |
| Electric adjustment of driver's seat and passenger seat | Main •/Deputy • |
| Front seat functions | • Heating |
| Front passenger seat rear adjustable buttons | - |
| Second row seat adjustment | ○ Front and rear adjustment; • Backrest adjustment |
| Rear seat folding | • Proportional down |
| Front/rear center armrest | Front •/Rear • |
| Rear cup holder | • |
| Seat Layout | ○2-3-2 |

Active safety

| | |
|---|-----------------------|
| Anti-lock Braking System (ABS) | • |
| Electronic Brakeforce Distribution (EBD/CBC) | • |
| Brake Assist System (EBA/BAS/BA) | • |
| Traction Control System (ASR/TCS/TRC) | • |
| Electronic Stability Control (ESC/ESP/DSC) | • |
| Tire Pressure Monitoring System (TPMS) | • Tire pressure alarm |
| Seat Belt Reminder | • Front row |

Active safety (continued)

| | |
|---|---|
| ISOFIX Child Seat Anchors | • |
| Lane Departure Warning System (LDWS) | • |
| Autonomous Emergency Braking (AEB) | • |
| Driver Fatigue Detection | • |
| Forward Collision Warning (FCW) | • |

Air conditioning/refrigerator

| | |
|--|------------------------------|
| Air conditioning temperature control method | • Automatic air conditioning |
| Rear Independent Climate Control | • |
| Rear seat air vents | • |
| Temperature zone control | • |
| Car air purifier | - |
| In-cabin PM2.5 Filter | • |

Passive safety

| | |
|--|-----------------|
| Driver/passenger airbag | Main •/Deputy • |
| Front/rear side airbags | Front •/Rear- |
| Front/rear head airbags (curtain airbags) | Front •/Rear • |

Wheel brake

| | |
|---------------------------|--------------------|
| Front Brake Type | Ventilation disc |
| Rear Brake Type | Disc |
| Parking brake type | Electronic Parking |
| Front Tire Size | 235/50 R19 |
| Rear Tire Size | 235/50 R19 |
| Spare Tire Size | Not full-size |

Audio/Interior Lighting

| | |
|----------------------------------|-------------------------------|
| Speaker Brand Name | • Harman/Kardon Harman Kardon |
| Number of speakers | ○8 Speaker • 10 speakers |
| Interior ambient lighting | • 30 colors |

Driving functions

| | |
|---|---|
| Navigation traffic information display | • |
|---|---|

Driving functions (continued)

| | |
|------------------------------------|--|
| Lane assist | <ul style="list-style-type: none">• |
| Lane Keeping Assist System | <ul style="list-style-type: none">• |
| Cruise control system | <ul style="list-style-type: none">• Full speed adaptive cruise |
| Satellite navigation system | <ul style="list-style-type: none">• |
| Driving assistance level | <ul style="list-style-type: none">•L2 |
| Lane centering | <ul style="list-style-type: none">• |
| Driver assistance systems | <ul style="list-style-type: none">•Travel Assist |
| Parking Assist | <ul style="list-style-type: none">• |

Exterior lighting

| | |
|-------------------------------------|--|
| Low beam light source | <ul style="list-style-type: none">•LED |
| High beam light source | <ul style="list-style-type: none">•LED |
| LED daytime running lights | <ul style="list-style-type: none">• |
| Adaptive high and low beam | <ul style="list-style-type: none">• |
| Automatic headlights | <ul style="list-style-type: none">• |
| Height-adjustable headlights | <ul style="list-style-type: none">• |
| Headlight Delay Off | <ul style="list-style-type: none">• |
| Lighting features | <ul style="list-style-type: none">• Matrix |
| Turn headlights | <ul style="list-style-type: none">• |
| Headlight rain and fog mode | <ul style="list-style-type: none">• |

Exterior mirrors

| | |
|---------------------------------|--|
| Exterior mirror function | <ul style="list-style-type: none">•Electric adjustment; •Electric folding; •Rearview mirror heating; •Automatically turn down when reversing; •Automatically fold when locking the car |
|---------------------------------|--|

Appearance/anti-theft

| | |
|--|--|
| Rim material | <ul style="list-style-type: none">• Aluminum alloy |
| Electric trunk | <ul style="list-style-type: none">• |
| Electronic engine immobilizer | <ul style="list-style-type: none">• |
| Central locking system in the car | <ul style="list-style-type: none">• |
| Key Type | <ul style="list-style-type: none">• Remote key |

Appearance/anti-theft (continued)

| | |
|---------------------------------------|--|
| Keyless start system | <ul style="list-style-type: none">• |
| Keyless entry function | <ul style="list-style-type: none">• Front row |
| Appearance Kit | <ul style="list-style-type: none">• Sports style |
| Hands-free Trunk | <ul style="list-style-type: none">• |
| Electric trunk position memory | <ul style="list-style-type: none">• |
| Roof rack | <ul style="list-style-type: none">• |

Skylight/Glass

| | |
|--|---|
| Sunroof Type | <ul style="list-style-type: none">• Openable panoramic sunroof |
| Front/rear electric windows | Front •/Rear • |
| One-touch window lifting function | <ul style="list-style-type: none">• Full vehicle |
| Window anti-pinch function | <ul style="list-style-type: none">• |
| Car makeup mirror | <ul style="list-style-type: none">• Main driver's lamp;• co-pilot's lamp |
| Rear wiper | <ul style="list-style-type: none">• |
| Rain sensor wiper function | <ul style="list-style-type: none">• Rainfall-sensing |

Interior and exterior color

| | |
|-----------------------|---|
| Exterior Color | Pert Silver #ADB0B5 Icelandic Silver #9CABB2 superconducting red #CF0723 Aurora White #FFFFFF sky blue #4F7B99 Xuanwu Black #000000 |
| Interior Color | silver fog black Gray #000000 #6B6969 warm velvet brown Gray #5F4239 #6B6969 |

Steering wheel/interior mirror

| | |
|---|--|
| Steering Wheel Material | <ul style="list-style-type: none">• Leather |
| Steering wheel position adjustment | <ul style="list-style-type: none">• Manual up and down front and rear adjustment |
| Multi-function steering wheel | <ul style="list-style-type: none">• |
| Heated Steering Wheel | <ul style="list-style-type: none">• |
| Steering wheel memory | - |
| Trip computer display screen | <ul style="list-style-type: none">• Color |
| Full LCD instrument panel | <ul style="list-style-type: none">• |

Steering wheel/interior mirror (continued)

| | |
|--|---|
| LCD instrument size | <ul style="list-style-type: none">• 10.3 inches |
| Interior rearview mirror function | <ul style="list-style-type: none">• Automatic anti-glare |
| Gear shifting | <ul style="list-style-type: none">• Mechanical gear shift |

Intelligent configuration

| | |
|-----------------------------------|---|
| Connected Car Services | <ul style="list-style-type: none">• |
| OTA Updates | - |
| 4G/5G Network | <ul style="list-style-type: none">•4G |
| Mobile APP remote function | <ul style="list-style-type: none">• |
| Wi-Fi hotspots | <ul style="list-style-type: none">• |

Driving Control

| | |
|-------------------------------------|--|
| Driving mode switch | <ul style="list-style-type: none">• Movement |
| Automatic parking | <ul style="list-style-type: none">• |
| Hill start assist | <ul style="list-style-type: none">• |
| Engine start-stop technology | <ul style="list-style-type: none">• |

Driving Hardware

| | |
|---|--|
| Front/rear parking radar | Front •/Rear • |
| Driving Assistance Camera System | <ul style="list-style-type: none">• 360-degree panoramic image |
| Front perception camera | <ul style="list-style-type: none">• Monocular |
| Number of cameras | <ul style="list-style-type: none">• 5 |
| Number of ultrasonic radars | <ul style="list-style-type: none">• 12 |

In-car charging

| | |
|--|--|
| Multimedia/charging port | <ul style="list-style-type: none">•USB;•Type-C |
| Number of USB/Type-C ports | <ul style="list-style-type: none">• 2 in the front row/2 in the back row |
| Mobile phone wireless charging function | <ul style="list-style-type: none">• Front row |
| Luggage compartment 12V power socket | <ul style="list-style-type: none">• |

"●" = Standard equipment

"□" = Not available

"○" = Optional equipment.

Note: These are Chinese market vehicles. Warranty coverage is not available outside of China.