

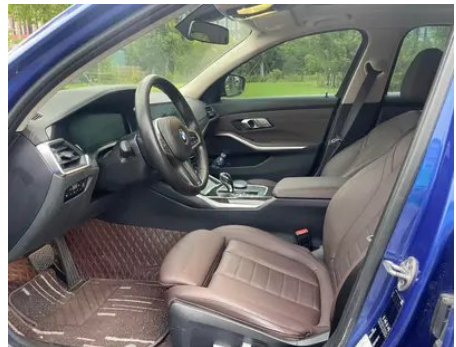
Vehicle Detail Report

BMW 3 Series 2020 325Li M Sports suit

Basic Information

| | |
|--------------------|------------|
| Brand | BMW |
| Mileage | 81,000 km |
| Color | Blue |
| First Registration | 2020-09-01 |
| Transfer Count | 0 |

Vehicle Images





Vehicle Condition

1. Radiator support, Signs of removal. 2. Driver's seat rails and frame, Signs of removal. 3. Front passenger seat rails and frame, Signs of removal. 4. Left rear quarter panel, Paint repair, Body panel repair.

Configuration Information

Model Information

| | |
|--------------------|---------------------------------------|
| Model Name | BMW 3 Series 2020 325Li M Sports suit |
| Launch Date | 2019.06 |

Basic parameters

| | |
|---|---------------------------|
| Vehicle Class | Mid-size car |
| Energy Type | Gasoline |
| Maximum Power (kW) | 135 |
| Maximum Torque (N·m) | 300 |
| Transmission | 8-gear manual integration |
| Body Type | Sedan |
| Engine | 2.0L 184 hp L4 |
| Dimensions (L×W×H) (mm) | 4829*1827*1463 |
| Official 0-100 km/h Acceleration (s) | 8.1 |
| Top Speed (km/h) | 235 |
| Curb Weight (kg) | 1630 |
| Maximum Gross Weight (kg) | 2055 |

Basic parameters (continued)

| | |
|---|---|
| NEDC Combined Fuel Consumption (L/100km) | 6 |
|---|---|

engine

| | |
|--------------------------------|------------------|
| Engine Model | B48B20B |
| Displacement (mL) | 1998 |
| Displacement (L) | 2.0 |
| Induction Type | Turbocharging |
| Cylinder Arrangement | L |
| Number of Cylinders | 4 |
| Valves per Cylinder | 4 |
| Valve Train | DOHC |
| Maximum Power (PS) | 184 |
| Max Power Speed (rpm) | 5000-6000 |
| Max Torque Speed (rpm) | 1350-4000 |
| Maximum net power (kW) | - |
| Fuel Grade | 95. |
| Fuel Delivery System | Direct injection |
| Cylinder Head Material | Aluminum alloy |
| Cylinder Block Material | Aluminum alloy |

Screen/System

| | |
|---|--|
| Central control color screen | <ul style="list-style-type: none">• Touch LCD screen |
| Infotainment Screen Size | <ul style="list-style-type: none">• 10.25 inches |
| Bluetooth/In-car Phone | <ul style="list-style-type: none">• |
| Smartphone Integration/Mirroring | <ul style="list-style-type: none">• Support CarPlay |
| Voice recognition control system | <ul style="list-style-type: none">• Multimedia system;• Navigation;• Telephone;• Air conditioning |
| Gesture Control | <input type="radio"/> |

Body

| | |
|-------------------------|------|
| Length (mm) | 4829 |
| Width (mm) | 1827 |
| Height (mm) | 1463 |
| Wheelbase (mm) | 2961 |
| Front Track (mm) | 1583 |

Body (continued)

| | |
|-------------------------------|------------|
| Rear Track (mm) | 1599 |
| Door Opening Type | swing door |
| Number of Doors | 4 |
| Number of Seats | 5 |
| Fuel Tank Capacity (L) | 59 |
| Trunk volume (L) | - |
| Drag Coefficient (Cd) | - |
| Approach Angle (°) | 17 |
| Departure Angle (°) | 18 |

Gearbox

| | |
|--------------------------|--|
| Abbreviation | 8-gear manual integration |
| Number of Gears | 8 |
| Transmission Type | Automatic Transmission with Manual Mode (AT) |

Chassis steering

| | |
|------------------------------|---|
| Drive Type | Front-engine, Rear-wheel drive (FR) |
| Front Suspension Type | Dual-ball-joint MacPherson independent suspension |
| Rear Suspension Type | Multi-link independent suspension |
| Power Steering Type | Electric power assistance |
| Vehicle structure | bearing type |

Seat Configuration

| | |
|--|---|
| Seat Material | <ul style="list-style-type: none">• Imitation leather |
| Main seat adjustment | <ul style="list-style-type: none">• Front and rear adjustment;• Backrest adjustment;• Height adjustment (4-way);• Leg rest adjustment;○ Lumbar support (4-way)(USD 338) |
| Co-seat adjustment method | <ul style="list-style-type: none">• Front and rear adjustment;• Backrest adjustment;• Height adjustment (4-way);• Leg support adjustment |
| Electric adjustment of driver's seat and passenger seat | Main •/Deputy • |
| Front seat functions | ○ Heating |
| Electric seat memory function | <ul style="list-style-type: none">• Driving position |

Seat Configuration (continued)

| | |
|---|----------------|
| Front passenger seat rear adjustable buttons | - |
| Front/rear center armrest | Front •/Rear • |
| Rear cup holder | • |

Active safety

| | |
|---|-------------------------|
| Anti-lock Braking System (ABS) | • |
| Electronic Brakeforce Distribution (EBD/CBC) | • |
| Brake Assist System (EBA/BAS/BA) | • |
| Traction Control System (ASR/TCS/TRC) | • |
| Electronic Stability Control (ESC/ESP/DSC) | • |
| Tire Pressure Monitoring System (TPMS) | • Tire pressure display |
| Seat Belt Reminder | • Front row |
| ISOFIX Child Seat Anchors | • |
| Lane Departure Warning System (LDWS) | ○ |
| Autonomous Emergency Braking (AEB) | • |
| Driver Fatigue Detection | • |
| Emergency Call System (eCall) | • |

Air conditioning/refrigerator

| | |
|--|------------------------------|
| Air conditioning temperature control method | • Automatic air conditioning |
| Rear Independent Climate Control | • |
| Rear seat air vents | • |
| Temperature zone control | • |
| Car air purifier | - |
| In-cabin PM2.5 Filter | • |

Passive safety

| | |
|--------------------------------|-----------------|
| Driver/passenger airbag | Main •/Deputy • |
| Front/rear side airbags | Front •/Rear- |

Passive safety (continued)

| | |
|--|----------------|
| Front/rear head airbags (curtain airbags) | Front •/Rear • |
| Run-flat tires | • |

Wheel brake

| | |
|---------------------------|--------------------|
| Front Brake Type | Ventilation disc |
| Rear Brake Type | Ventilation disc |
| Parking brake type | Electronic Parking |
| Front Tire Size | 225/45 R18 |
| Rear Tire Size | 225/45 R18 |
| Spare Tire Size | None |

Audio/Interior Lighting

| | |
|----------------------------------|--|
| Speaker Brand Name | <input type="radio"/> Harman/Kardon Harman Kardon |
| Number of speakers | • 6 speakers; <input type="radio"/> 10 speakers (USD 471); <input type="radio"/> 16 speakers |
| Interior ambient lighting | • 11 colors |

Driving functions

| | |
|---|--|
| Navigation traffic information display | • |
| Lane assist | <input type="radio"/> |
| Lane Keeping Assist System | <input type="radio"/> |
| Cruise control system | • Constant speed cruise; <input type="radio"/> Adaptive cruise (USD 971); <input type="radio"/> Full speed adaptive cruise |
| Satellite navigation system | • |
| Road traffic sign recognition | <input type="radio"/> |
| Parking Assist | • |

Exterior lighting

| | |
|-------------------------------------|---------------------------------|
| Low beam light source | •LED |
| High beam light source | •LED |
| LED daytime running lights | • |
| Adaptive high and low beam | <input type="radio"/> (USD 471) |
| Automatic headlights | • |
| Height-adjustable headlights | • |

Exterior lighting (continued)

| | |
|----------------------------|---|
| Headlight Delay Off | • |
| Turn headlights | • |

Exterior mirrors

| | |
|---------------------------------|---|
| Exterior mirror function | • Electric adjustment; • Electric folding; • Rearview mirror memory; • Rearview mirror heating; • Automatic downturning when reversing; • Automatic folding when locked; ○ Automatic anti-glare |
|---------------------------------|---|

Appearance/anti-theft

| | |
|--|------------------|
| Rim material | • Aluminum alloy |
| Electric trunk | ○ |
| Electronic engine immobilizer | • |
| Central locking system in the car | • |
| Key Type | • Remote key |
| Keyless start system | • |
| Keyless entry function | ○ Whole vehicle |
| Appearance Kit | • Sports style |
| Hands-free Trunk | ○ |
| Remote start function | ○(USD 412) |
| Active closed grille | • |

Skylight/Glass

| | |
|--|---|
| Sunroof Type | • Openable panoramic sunroof |
| Front/rear electric windows | Front •/Rear • |
| One-touch window lifting function | • Full car |
| Window anti-pinch function | • |
| Car makeup mirror | • Main driver's lamp; • co-pilot's lamp |
| Rear wiper | - |
| Rain sensor wiper function | • Rainfall-sensing |

Interior and exterior color

Interior and exterior color (continued)

| | |
|-----------------------|---|
| Exterior Color | Porty blue:#1459A0; Ore white:#E7E7E7; Melbourne red:#610303; Obsidian gold:#E8D161; Carbon black:#181E2A |
| Interior Color | Black:#000000; Black/Cognac:#000000/#78593D; Black/Mocha:#000000/#423534 |

Steering wheel/interior mirror

| | |
|---|--|
| Steering Wheel Material | • Leather |
| Steering wheel position adjustment | • Manual up and down front and rear adjustment |
| Multi-function steering wheel | • |
| Heated Steering Wheel | - |
| Steering wheel memory | - |
| Trip computer display screen | • Color |
| Full LCD instrument panel | • |
| LCD instrument size | • 12.3 inches |
| Interior rearview mirror function | • Manual anti-glare; ○ Automatic anti-glare |
| HUD Head Up Digital Display | ○ |
| Steering Wheel Shift Paddles | ○(USD 265) |

Intelligent configuration

| | |
|-------------------------------|---|
| Connected Car Services | • |
| OTA Updates | • |

Driving Control

| | |
|-------------------------------------|--|
| Driving mode switch | • Sport; • Economy; • Standard/Comfort |
| Automatic parking | • |
| Hill start assist | • |
| Engine start-stop technology | • |

Driving Hardware

| | |
|---|---|
| Front/rear parking radar | Front •/Rear • |
| Driving Assistance Camera System | • Reversing image; ○ 360-degree panoramic image (USD 765) |

In-car charging

In-car charging (continued)

| | |
|--|--|
| Multimedia/charging port | •USB;•Type-C |
| Number of USB/Type-C ports | • 2 in the front row/2 in the back row |
| Mobile phone wireless charging function | ○ Front row |

Optional Package

| | |
|-------------------------|---|
| Optional Package | Rearview mirror (USD 662; Including: internal rearview mirror with automatic anti-glare function and driver's side external rearview mirror); Winter package (USD 735; Including: front seat heating function, remote engine start); Driving assistance system (USD 1,206; Including: lane departure warning, lane change blind zone warning and automatic speed limit reminder); Comfort package (USD 1,456; Including: rear luggage compartment lid with automatic control, keyless entry (all doors, trunk lid)); Entertainment package (USD 1,471; Including: Harman/Kardon high-end sound system, mobile phone wireless charging, WiFi hotspot and free WiFi data flow package); Innovative package (USD 1,926; Including: gesture control system, full color head-up display system); Professional driving assistance system (USD 2,691; Including: lane keeping function, free hands to follow the car at low speed) |
|-------------------------|---|

"●" = Standard equipment

"_" = Not available

"○" = Optional equipment.

Note: These are Chinese market vehicles. Warranty coverage is not available outside of China.