

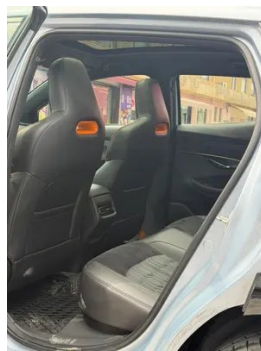
# Vehicle Detail Report

## Changan UNI-T 2022 1.5T Sports version Flagship

### Basic Information

Brand	Changan
Mileage	20,000 km
Color	Blue
First Registration	2022-04-01
Transfer Count	0

### Vehicle Images





## Vehicle Condition

1. Radiator support, Signs of removal, Replaced. 2. Right front frame rail, Deformation. 3. Driver's seat rails and frame, Signs of removal. 4. Front passenger seat rails and frame, Signs of removal.

## Configuration Information

### Model Information

<b>Model Name</b>	Changan UNI-T 2022 1.5T Sports version Flagship
<b>Launch Date</b>	2021.08

### Basic parameters

<b>Vehicle Class</b>	Compact SUV
<b>Energy Type</b>	Gasoline
<b>Maximum Power (kW)</b>	138
<b>Maximum Torque (N·m)</b>	300
<b>Transmission</b>	7-speed wet dual-clutch
<b>Body Type</b>	SUV
<b>Engine</b>	1.5T 188 horsepower L4
<b>Dimensions (L×W×H) (mm)</b>	4580*1905*1565
<b>Official 0-100 km/h Acceleration (s)</b>	-
<b>Top Speed (km/h)</b>	205
<b>Curb Weight (kg)</b>	1465
<b>Maximum Gross Weight (kg)</b>	1840
<b>NEDC Combined Fuel Consumption (L/100km)</b>	6.1

### engine

<b>Engine Model</b>	JL473ZQ7
<b>Displacement (mL)</b>	1494
<b>Displacement (L)</b>	1.5
<b>Induction Type</b>	Turbocharging

## engine (continued)

<b>Cylinder Arrangement</b>	L
<b>Number of Cylinders</b>	4
<b>Valves per Cylinder</b>	4
<b>Valve Train</b>	DOHC
<b>Maximum Power (PS)</b>	188
<b>Max Power Speed (rpm)</b>	5500
<b>Max Torque Speed (rpm)</b>	1500-4000
<b>Maximum net power (kW)</b>	133
<b>Fuel Grade</b>	92.
<b>Fuel Delivery System</b>	Direct injection
<b>Cylinder Head Material</b>	Aluminum alloy
<b>Cylinder Block Material</b>	Aluminum alloy
<b>Engine layout</b>	Horizontal

## Screen/System

<b>Central control color screen</b>	<ul style="list-style-type: none"><li>• Touch LCD screen</li></ul>
<b>Infotainment Screen Size</b>	<ul style="list-style-type: none"><li>• 12.3 inches</li></ul>
<b>Bluetooth/In-car Phone</b>	<ul style="list-style-type: none"><li>•</li></ul>
<b>Voice recognition control system</b>	<ul style="list-style-type: none"><li>• Multimedia system;</li><li>• Navigation;</li><li>• Telephone;</li><li>• Air conditioning</li></ul>
<b>Facial Recognition</b>	<ul style="list-style-type: none"><li>•</li></ul>
<b>Gesture Control</b>	<ul style="list-style-type: none"><li>•</li></ul>

## Body

<b>Length (mm)</b>	4580
<b>Width (mm)</b>	1905
<b>Height (mm)</b>	1565
<b>Wheelbase (mm)</b>	2710
<b>Front Track (mm)</b>	1600
<b>Rear Track (mm)</b>	1610
<b>Ground Clearance (Fully Loaded) (mm)</b>	190
<b>Door Opening Type</b>	swing door
<b>Number of Doors</b>	5
<b>Number of Seats</b>	5
<b>Fuel Tank Capacity (L)</b>	55

## Body (continued)

<b>Trunk volume (L)</b>	-
<b>Drag Coefficient (Cd)</b>	-
<b>Approach Angle (°)</b>	15
<b>Departure Angle (°)</b>	21

## Gearbox

<b>Abbreviation</b>	7-speed wet dual-clutch
<b>Number of Gears</b>	7
<b>Transmission Type</b>	Wet Dual-Clutch Transmission (DCT)

## Chassis steering

<b>Drive Type</b>	Front-engine, Front-wheel drive (FF)
<b>Front Suspension Type</b>	MacPherson independent suspension
<b>Rear Suspension Type</b>	Multi-link independent suspension
<b>Power Steering Type</b>	Electric power assistance
<b>Vehicle structure</b>	bearing type

## Seat Configuration

<b>Seat Material</b>	<ul style="list-style-type: none"><li>• Leather/suede mix and match</li></ul>
<b>Main seat adjustment</b>	<ul style="list-style-type: none"><li>• Front and rear adjustment;</li><li>• Backrest adjustment;</li><li>• Height adjustment (2-way);</li><li>• Lumbar support (2-way)</li></ul>
<b>Co-seat adjustment method</b>	<ul style="list-style-type: none"><li>• Front and rear adjustment;</li><li>• Backrest adjustment</li></ul>
<b>Electric adjustment of driver's seat and passenger seat</b>	Main •/Deputy •
<b>Front seat functions</b>	<ul style="list-style-type: none"><li>• Heating</li></ul>
<b>Electric seat memory function</b>	<ul style="list-style-type: none"><li>• Driving position</li></ul>
<b>Front passenger seat rear adjustable buttons</b>	-
<b>Rear seat folding</b>	<ul style="list-style-type: none"><li>• Proportional down</li></ul>
<b>Front/rear center armrest</b>	Front •/Rear •
<b>Rear cup holder</b>	<ul style="list-style-type: none"><li>•</li></ul>
<b>Sports style seats</b>	<ul style="list-style-type: none"><li>•</li></ul>

## Active safety

<b>Anti-lock Braking System (ABS)</b>	<ul style="list-style-type: none"><li>•</li></ul>
---------------------------------------	---

## Active safety (continued)

<b>Electronic Brakeforce Distribution (EBD/CBC)</b>	•
<b>Brake Assist System (EBA/BAS/BA)</b>	•
<b>Traction Control System (ASR/TCS/TRC)</b>	•
<b>Electronic Stability Control (ESC/ESP/DSC)</b>	•
<b>Tire Pressure Monitoring System (TPMS)</b>	• Tire pressure display
<b>Seat Belt Reminder</b>	• Full vehicle
<b>ISOFIX Child Seat Anchors</b>	•
<b>Lane Departure Warning System (LDWS)</b>	•
<b>Autonomous Emergency Braking (AEB)</b>	•
<b>Driver Fatigue Detection</b>	•
<b>Forward Collision Warning (FCW)</b>	•
<b>Built-in Dashcam</b>	•
<b>Door Opening Warning (DOW)</b>	•

## Air conditioning/refrigerator

<b>Air conditioning temperature control method</b>	• Automatic air conditioning
<b>Rear Independent Climate Control</b>	-
<b>Rear seat air vents</b>	•
<b>Temperature zone control</b>	-
<b>Car air purifier</b>	•
<b>In-cabin PM2.5 Filter</b>	•
<b>Negative ion generator</b>	•

## Passive safety

<b>Driver/passenger airbag</b>	Main •/Deputy •
<b>Front/rear side airbags</b>	Front •/Rear-
<b>Front/rear head airbags (curtain airbags)</b>	Front •/Rear •

## Wheel brake

## Wheel brake (continued)

<b>Front Brake Type</b>	Ventilation disc
<b>Rear Brake Type</b>	Disc
<b>Parking brake type</b>	Electronic Parking
<b>Front Tire Size</b>	245/45 R20
<b>Rear Tire Size</b>	245/45 R20
<b>Spare Tire Size</b>	Not full-size

## Audio/Interior Lighting

<b>Speaker Brand Name</b>	•SONY Sony
<b>Number of speakers</b>	•11 speakers

## Driving functions

<b>Navigation traffic information display</b>	•
<b>Lane assist</b>	•
<b>Lane Keeping Assist System</b>	•
<b>Cruise control system</b>	• Full speed adaptive cruise
<b>Satellite navigation system</b>	•
<b>Driving assistance level</b>	•L2
<b>Rear Cross Traffic Alert</b>	•
<b>Lane centering</b>	•
<b>Road traffic sign recognition</b>	•
<b>Map Brand</b>	• Amap; • Tencent
<b>Remote Parking</b>	•
<b>Parking Assist</b>	•

## Exterior lighting

<b>Low beam light source</b>	•LED
<b>High beam light source</b>	•LED
<b>LED daytime running lights</b>	•
<b>Adaptive high and low beam</b>	•
<b>Automatic headlights</b>	•
<b>Height-adjustable headlights</b>	•
<b>Headlight Delay Off</b>	•

## Exterior mirrors

<b>Exterior mirror function</b>	<ul style="list-style-type: none"><li>• Electric adjustment;</li><li>• Electric folding;</li><li>• Rearview mirror memory;</li><li>• Rearview mirror heating;</li><li>• Automatic folding when locked</li></ul>
---------------------------------	---

## Appearance/anti-theft

<b>Rim material</b>	<ul style="list-style-type: none"><li>• Aluminum alloy</li></ul>
<b>Electric trunk</b>	<ul style="list-style-type: none"><li>•</li></ul>
<b>Electronic engine immobilizer</b>	<ul style="list-style-type: none"><li>•</li></ul>
<b>Central locking system in the car</b>	<ul style="list-style-type: none"><li>•</li></ul>
<b>Key Type</b>	<ul style="list-style-type: none"><li>• Remote key;</li><li>• Bluetooth key</li></ul>
<b>Keyless start system</b>	<ul style="list-style-type: none"><li>•</li></ul>
<b>Keyless entry function</b>	<ul style="list-style-type: none"><li>• Front row</li></ul>
<b>Appearance Kit</b>	<ul style="list-style-type: none"><li>• Sports style</li></ul>
<b>Electric trunk position memory</b>	<ul style="list-style-type: none"><li>•</li></ul>
<b>Remote start function</b>	<ul style="list-style-type: none"><li>•</li></ul>
<b>Hidden electric door handle</b>	<ul style="list-style-type: none"><li>•</li></ul>

## Skylight/Glass

<b>Sunroof Type</b>	<ul style="list-style-type: none"><li>• Panoramic sunroof cannot be opened</li></ul>
<b>Front/rear electric windows</b>	Front •/Rear •
<b>One-touch window lifting function</b>	<ul style="list-style-type: none"><li>• Full vehicle</li></ul>
<b>Window anti-pinch function</b>	<ul style="list-style-type: none"><li>•</li></ul>
<b>Car makeup mirror</b>	<ul style="list-style-type: none"><li>• Main driving position;</li><li>• First officer</li></ul>
<b>Rear wiper</b>	<ul style="list-style-type: none"><li>•</li></ul>
<b>Rain sensor wiper function</b>	<ul style="list-style-type: none"><li>• Rainfall-sensing</li></ul>

## Interior and exterior color

<b>Exterior Color</b>	blue sky #ADC7DE Star White #FFFFFF interstellar gray #6A6E77 Star Diamond Black #000000 Atomic putty #ABACB0 Mech Green #505948
-----------------------	--

## Interior and exterior color (continued)

<b>Interior Color</b>	Black Vibrant Orange #000000 #DF815A Black Dynamic Yellow #000000 #F5FB61
-----------------------	---

## Steering wheel/interior mirror

<b>Steering Wheel Material</b>	• Genuine leather; • Alcantara/ suede leather
<b>Steering wheel position adjustment</b>	• Manual up and down front and rear adjustment
<b>Multi-function steering wheel</b>	•
<b>Heated Steering Wheel</b>	-
<b>Steering wheel memory</b>	-
<b>Trip computer display screen</b>	• Color
<b>Full LCD instrument panel</b>	•
<b>LCD instrument size</b>	• 12.3 inches
<b>Interior rearview mirror function</b>	• Manual anti-glare
<b>Gear shifting</b>	• Electronic gear shift

## Intelligent configuration

<b>Connected Car Services</b>	•
<b>OTA Updates</b>	•
<b>4G/5G Network</b>	•4G
<b>Mobile APP remote function</b>	• Door control; • Vehicle start; • Climate control; • Vehicle status check/diagnostics; • Vehicle location / find my car
<b>Wi-Fi hotspots</b>	•

## Driving Control

<b>Driving mode switch</b>	• Sport; • Economy; • Standard/ Comfort
<b>Automatic parking</b>	•
<b>Steep slope descent</b>	•
<b>Hill start assist</b>	•
<b>Engine start-stop technology</b>	•

## Driving Hardware

<b>Front/rear parking radar</b>	Front •/Rear •
---------------------------------	----------------

## Driving Hardware (continued)

<b>Driving Assistance Camera System</b>	• 360-degree panoramic image
<b>Number of cameras</b>	• 5
<b>Number of ultrasonic radars</b>	• 12
<b>Millimeter wave radar quantity</b>	• 2

## In-car charging

<b>Multimedia/charging port</b>	•USB
<b>Number of USB/Type-C ports</b>	• 2 in the First row/1 in the 2nd-row
<b>Mobile phone wireless charging function</b>	• Front row
<b>Luggage compartment 12V power socket</b>	•

---

"●" = Standard equipment

"-" = Not available

"○" = Optional equipment.

Note: These are Chinese market vehicles. Warranty coverage is not available outside of China.