

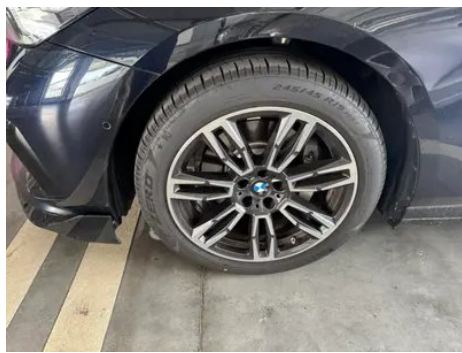
# Vehicle Detail Report

**BMW 5 Series 2025 530Li Leading Type M Sports suit**

## Basic Information

|                    |                   |
|--------------------|-------------------|
| Brand              | <b>BMW</b>        |
| Mileage            | <b>11,000 km</b>  |
| Color              | <b>Black</b>      |
| First Registration | <b>2025-06-01</b> |
| Transfer Count     | <b>0</b>          |

## Vehicle Images





## Vehicle Condition

1. Original metal body panels with factory paint.

## Configuration Information

### Model Information

|                    |  |
|--------------------|--|
| <b>Model Name</b>  | BMW 5 Series 2025 530Li Leading Type M Sports suit |
| <b>Launch Date</b> | 2024.12  |

### Basic parameters

|   |                                   |
|---|-----------------------------------|
| <b>Vehicle Class</b>                            | Mid-size and large cars           |
| <b>Energy Type</b>                              | Gasoline + 48V Mild Hybrid System |
| <b>Maximum Power (kW)</b>                       | 190                               |
| <b>Maximum Torque (N·m)</b>                     | 400                               |
| <b>Transmission</b>                             | 8-gear manual integration         |
| <b>Body Type</b>                                | Sedan                             |
| <b>Engine</b>                                   | 2.0T 258 horsepower L4            |
| <b>Dimensions (L×W×H) (mm)</b>                  | 5175*1900*1520                    |
| <b>Official 0-100 km/h Acceleration (s)</b>     | 6.5                               |
| <b>Top Speed (km/h)</b>                         | 250                               |
| <b>Curb Weight (kg)</b>                         | 1808                              |
| <b>Maximum Gross Weight (kg)</b>                | 2410                              |
| <b>WLTP Combined Fuel Consumption (L/100km)</b> | 6.7                               |

## engine

|                                |                 |
|--------------------------------|-----------------|
| <b>Engine Model</b>            | B48B20T         |
| <b>Displacement (mL)</b>       | 1998            |
| <b>Displacement (L)</b>        | 2.0             |
| <b>Induction Type</b>          | Turbocharging   |
| <b>Cylinder Arrangement</b>    | L               |
| <b>Number of Cylinders</b>     | 4               |
| <b>Valves per Cylinder</b>     | 4               |
| <b>Valve Train</b>             | DOHC            |
| <b>Maximum Power (PS)</b>      | 258             |
| <b>Max Power Speed (rpm)</b>   | 5000            |
| <b>Max Torque Speed (rpm)</b>  | 1600-4500       |
| <b>Maximum net power (kW)</b>  | 190             |
| <b>Fuel Grade</b>              | 95.             |
| <b>Fuel Delivery System</b>    | Mixed injection |
| <b>Cylinder Head Material</b>  | Aluminum alloy  |
| <b>Cylinder Block Material</b> | Aluminum alloy  |
| <b>Engine layout</b>           | Longitudinal    |

## Screen/System

|  |  |
|--|--|
| <b>Central control color screen</b>        | <ul style="list-style-type: none"><li>• Touch LCD screen</li></ul>   |
| <b>Infotainment Screen Size</b>            | <ul style="list-style-type: none"><li>• 14.9 inches</li></ul>  |
| <b>Bluetooth/In-car Phone</b>              | <ul style="list-style-type: none"><li>•</li></ul>  |
| <b>Smartphone Integration/ Mirroring</b>   | <ul style="list-style-type: none"><li>• Support CarPlay</li></ul>  |
| <b>Voice recognition control system</b>    | <ul style="list-style-type: none"><li>• Multimedia system;</li><li>• Navigation;</li><li>• Telephone;</li><li>• Air conditioning</li></ul> |
| <b>Voice wake-up recognition by region</b> | <ul style="list-style-type: none"><li>• Dual Zone</li></ul>  |
| <b>In-vehicle intelligent system</b>       | <ul style="list-style-type: none"><li>• iDrive</li></ul>   |
| <b>App Store</b>                           | <ul style="list-style-type: none"><li>•</li></ul>  |
| <b>Voice assistant wake-up word</b>        | <ul style="list-style-type: none"><li>• Hello, BMW</li></ul>   |
| <b>Voice wake-up word-free</b>             | <ul style="list-style-type: none"><li>•</li></ul>  |
| <b>Continuous speech recognition</b>       | <ul style="list-style-type: none"><li>•</li></ul>  |

## Screen/System (continued)

|                             |                             |
|-----------------------------|-----------------------------|
| <b>Car Intelligent Chip</b> | • Qualcomm Snapdragon 8155P |
|-----------------------------|-----------------------------|

## Body

|                               |            |
|-------------------------------|------------|
| <b>Length (mm)</b>            | 5175       |
| <b>Width (mm)</b>             | 1900       |
| <b>Height (mm)</b>            | 1520       |
| <b>Wheelbase (mm)</b>         | 3105       |
| <b>Front Track (mm)</b>       | 1622       |
| <b>Rear Track (mm)</b>        | 1657       |
| <b>Door Opening Type</b>      | swing door |
| <b>Number of Doors</b>        | 4          |
| <b>Number of Seats</b>        | 5          |
| <b>Fuel Tank Capacity (L)</b> | 60         |
| <b>Trunk volume (L)</b>       | -          |
| <b>Drag Coefficient (Cd)</b>  | -          |
| <b>Approach Angle (°)</b>     | 16         |
| <b>Departure Angle (°)</b>    | 18         |

## Gearbox

|                          |  |
|--------------------------|--|
| <b>Abbreviation</b>      | 8-gear manual integration                    |
| <b>Number of Gears</b>   | 8  |
| <b>Transmission Type</b> | Automatic Transmission with Manual Mode (AT) |

## Chassis steering

|                              |  |
|------------------------------|--|
| <b>Drive Type</b>            | Front-engine, Rear-wheel drive (FR)    |
| <b>Front Suspension Type</b> | Double wishbone independent suspension |
| <b>Rear Suspension Type</b>  | Multi-link independent suspension      |
| <b>Power Steering Type</b>   | Electric power assistance              |
| <b>Vehicle structure</b>     | bearing type                           |

## Seat Configuration

|                             |   |
|-----------------------------|---|
| <b>Seat Material</b>        | • Imitation leather   |
| <b>Main seat adjustment</b> | • Front and rear adjustment; • Backrest adjustment; • Height adjustment (4-way);○ Lumbar support (4-way)(USD 353) |

## Seat Configuration (continued)

|  |  |
|--|--|
| <b>Co-seat adjustment method</b>                               | <ul style="list-style-type: none"><li>• Front and rear adjustment;</li><li>• Backrest adjustment;</li><li>• Height adjustment (4-way);</li><li>○ Lumbar support (4-way)(USD 353)</li></ul> |
| <b>Electric adjustment of driver's seat and passenger seat</b> | Main •/Deputy •  |
| <b>Front seat functions</b>                                    | <ul style="list-style-type: none"><li>• Heating</li></ul>  |
| <b>Electric seat memory function</b>                           | <ul style="list-style-type: none"><li>• Driving position</li></ul>   |
| <b>Front passenger seat rear adjustable buttons</b>            | -  |
| <b>Front/rear center armrest</b>                               | Front •/Rear •   |
| <b>Rear cup holder</b>   | <ul style="list-style-type: none"><li>•</li></ul>  |

## Active safety

|   |   |
|---|---|
| <b>Anti-lock Braking System (ABS)</b>               | <ul style="list-style-type: none"><li>•</li></ul>                       |
| <b>Electronic Brakeforce Distribution (EBD/CBC)</b> | <ul style="list-style-type: none"><li>•</li></ul>                       |
| <b>Brake Assist System (EBA/BAS/BA)</b>             | <ul style="list-style-type: none"><li>•</li></ul>                       |
| <b>Traction Control System (ASR/TCS/TRC)</b>        | <ul style="list-style-type: none"><li>•</li></ul>                       |
| <b>Electronic Stability Control (ESC/ESP/DSC)</b>   | <ul style="list-style-type: none"><li>•</li></ul>                       |
| <b>Tire Pressure Monitoring System (TPMS)</b>       | <ul style="list-style-type: none"><li>• Tire pressure display</li></ul> |
| <b>Seat Belt Reminder</b>                           | <ul style="list-style-type: none"><li>• Full car</li></ul>              |
| <b>ISOFIX Child Seat Anchors</b>                    | <ul style="list-style-type: none"><li>•</li></ul>                       |
| <b>Lane Departure Warning System (LDWS)</b>         | <ul style="list-style-type: none"><li>•</li></ul>                       |
| <b>Autonomous Emergency Braking (AEB)</b>           | <ul style="list-style-type: none"><li>•</li></ul>                       |
| <b>Driver Fatigue Detection</b>                     | <ul style="list-style-type: none"><li>•</li></ul>                       |
| <b>Forward Collision Warning (FCW)</b>              | <ul style="list-style-type: none"><li>•</li></ul>                       |
| <b>Rear Collision Warning</b>                       | <ul style="list-style-type: none"><li>•</li></ul>                       |
| <b>Emergency Call System (eCall)</b>                | <ul style="list-style-type: none"><li>•</li></ul>                       |
| <b>Door Opening Warning (DOW)</b>                   | <ul style="list-style-type: none"><li>•</li></ul>                       |

## Air conditioning/refrigerator

|  |  |
|--|--|
| <b>Air conditioning temperature control method</b> | <ul style="list-style-type: none"><li>• Automatic air conditioning</li></ul> |
| <b>Rear Independent Climate Control</b>            | ○(USD 824)   |
| <b>Rear seat air vents</b>                         | <ul style="list-style-type: none"><li>•</li></ul>                            |
| <b>Temperature zone control</b>                    | <ul style="list-style-type: none"><li>•</li></ul>                            |
| <b>Car air purifier</b>                            | -  |
| <b>In-cabin PM2.5 Filter</b>                       | <ul style="list-style-type: none"><li>•</li></ul>                            |

## Passive safety

|  |  |
|--|--|
| <b>Driver/passenger airbag</b>                   | Main <ul style="list-style-type: none"><li>•</li></ul> /Deputy <ul style="list-style-type: none"><li>•</li></ul> |
| <b>Front/rear side airbags</b>                   | Front <ul style="list-style-type: none"><li>•</li></ul> /Rear-   |
| <b>Front/rear head airbags (curtain airbags)</b> | Front <ul style="list-style-type: none"><li>•</li></ul> /Rear <ul style="list-style-type: none"><li>•</li></ul>  |
| <b>Passive pedestrian protection</b>             | <ul style="list-style-type: none"><li>•</li></ul>  |
| <b>Front center airbag</b>                       | <ul style="list-style-type: none"><li>•</li></ul>  |

## Wheel brake

|                           |                    |
|---------------------------|--------------------|
| <b>Front Brake Type</b>   | Ventilation disc   |
| <b>Rear Brake Type</b>    | Ventilation disc   |
| <b>Parking brake type</b> | Electronic Parking |
| <b>Front Tire Size</b>    | 245/45 R19         |
| <b>Rear Tire Size</b>     | 245/45 R19         |
| <b>Spare Tire Size</b>    | None               |

## Audio/Interior Lighting

|                                  |  |
|----------------------------------|--|
| <b>Speaker Brand Name</b>        | <ul style="list-style-type: none"><li>• Harman/Kardon Harman Kardon;</li><li>○ Bowers &amp; Wilkins Bao Hua Wei Jian (USD 882)</li></ul> |
| <b>Number of speakers</b>        | <ul style="list-style-type: none"><li>• 12 horns;</li><li>○ 18 horns</li></ul>   |
| <b>Interior ambient lighting</b> | <ul style="list-style-type: none"><li>• Multicolor</li></ul>   |

## Driving functions

|   |   |
|---|---|
| <b>Navigation traffic information display</b> | <ul style="list-style-type: none"><li>•</li></ul>   |
| <b>Lane assist</b>                            | <ul style="list-style-type: none"><li>•</li></ul>   |
| <b>Lane Keeping Assist System</b>             | <ul style="list-style-type: none"><li>•</li></ul>   |
| <b>Cruise control system</b>                  | <ul style="list-style-type: none"><li>• Adaptive cruise;</li><li>○ Full speed adaptive cruise</li></ul> |

## Driving functions (continued)

|                                      |              |
|--------------------------------------|--------------|
| <b>Satellite navigation system</b>   | •            |
| <b>Driving assistance level</b>      | •L2          |
| <b>Rear Cross Traffic Alert</b>      | •            |
| <b>Lane centering</b>                | •            |
| <b>Road traffic sign recognition</b> | •            |
| <b>Tracking reverse</b>              | •            |
| <b>Hands-off detection</b>           | ○            |
| <b>AR real-time navigation</b>       | ○            |
| <b>Parking Assist</b>                | •            |
| <b>Lane Change Assist</b>            | ○(USD 2,279) |

## Exterior lighting

|                                     |            |
|-------------------------------------|------------|
| <b>Low beam light source</b>        | •LED       |
| <b>High beam light source</b>       | •LED       |
| <b>LED daytime running lights</b>   | •          |
| <b>Adaptive high and low beam</b>   | •          |
| <b>Automatic headlights</b>         | •          |
| <b>Height-adjustable headlights</b> | •          |
| <b>Headlight Delay Off</b>          | •          |
| <b>Turn headlights</b>              | ○(USD 897) |

## Exterior mirrors

|                                 |   |
|---------------------------------|---|
| <b>Exterior mirror function</b> | • Electric adjustment; • Electric folding; • Rearview mirror memory; • Rearview mirror heating; • Automatic downturning when reversing; • Automatic folding when locked; • Automatic anti-glare |
|---------------------------------|---|

## Appearance/anti-theft

|  |                               |
|--|-------------------------------|
| <b>Rim material</b>                      | • Aluminum alloy              |
| <b>Electric trunk</b>                    | •                             |
| <b>Electronic engine immobilizer</b>     | •                             |
| <b>Central locking system in the car</b> | •                             |
| <b>Key Type</b>                          | •Remote key; •UWB digital key |

## Appearance/anti-theft (continued)

|                               |                |
|-------------------------------|----------------|
| <b>Keyless start system</b>   | •              |
| <b>Keyless entry function</b> | • Front row    |
| <b>Appearance Kit</b>         | • Sports style |
| <b>Hands-free Trunk</b>       | •              |
| <b>Remote start function</b>  | ○              |
| <b>Active closed grille</b>   | •              |

## Skylight/Glass

|  |   |
|--|---|
| <b>Sunroof Type</b>                      | • Panoramic sunroof cannot be opened    |
| <b>Front/rear electric windows</b>       | Front •/Rear •                          |
| <b>One-touch window lifting function</b> | • Full car                              |
| <b>Window anti-pinch function</b>        | •                                       |
| <b>Car makeup mirror</b>                 | • Main driver's lamp; • co-pilot's lamp |
| <b>Rear wiper</b>                        | -                                       |
| <b>Rain sensor wiper function</b>        | • Rainfall-sensing                      |
| <b>Starry skylight</b>                   | ○(USD 1,074)                            |

## Interior and exterior color

|                       |  |
|-----------------------|--|
| <b>Exterior Color</b> | Carbon Black: #232A30; Mineral White: #E7E7E7; Rock Gray: #969E9E; Quantum Blue: #273F7C; Matte Pure Gray: #909090; Sand Goldstone Red: #B24442; Shimmering Copper Gray: #909090 |
| <b>Interior Color</b> | Burgundy Red:#AF3A21; Dark Coffee:#964B4B; Copper Brown:#8F5D3C  |

## Steering wheel/interior mirror

|   |  |
|---|--|
| <b>Steering Wheel Material</b>            | • Leather  |
| <b>Steering wheel position adjustment</b> | • Electric up and down front and rear adjustment |
| <b>Multi-function steering wheel</b>      | •  |
| <b>Heated Steering Wheel</b>              | ○(USD 382)                                       |
| <b>Steering wheel memory</b>              | •  |
| <b>Trip computer display screen</b>       | • Color  |

## Steering wheel/interior mirror (continued)

|  |                         |
|--|-------------------------|
| <b>Full LCD instrument panel</b>         | •                       |
| <b>LCD instrument size</b>               | • 12.3 inches           |
| <b>Interior rearview mirror function</b> | • Automatic anti-glare  |
| <b>Gear shifting</b>                     | • Electronic gear shift |
| <b>HUD Head Up Digital Display</b>       | ○(USD 1,588)            |
| <b>ETC Device</b>                        | •                       |
| <b>Steering Wheel Shift Paddles</b>      | •                       |

## Intelligent configuration

|                                   |   |
|-----------------------------------|---|
| <b>Connected Car Services</b>     | •   |
| <b>OTA Updates</b>                | •   |
| <b>4G/5G Network</b>              | • 4G;○ 5G(USD 456)  |
| <b>Mobile APP remote function</b> | • Door control; ○ Vehicle start (USD 456);○ Air conditioning control; • Vehicle condition inquiry/diagnosis; • Vehicle location/car search; • Owner service (find charging piles, gas stations, parking lots, etc.) |
| <b>Wi-Fi hotspots</b>             | •   |

## Driving Control

|                                     |   |
|-------------------------------------|---|
| <b>Driving mode switch</b>          | • Sport; • Economy; • Standard/Comfort; • Customization/Personalization |
| <b>Automatic parking</b>            | •   |
| <b>Hill start assist</b>            | •   |
| <b>Variable steering ratio</b>      | •   |
| <b>Engine start-stop technology</b> | •   |

## Driving Hardware

|   |                              |
|---|------------------------------|
| <b>Front/rear parking radar</b>         | Front •/Rear •               |
| <b>Driving Assistance Camera System</b> | • 360-degree panoramic image |
| <b>Front perception camera</b>          | • Monocular; ○ Binocular     |
| <b>Number of cameras</b>                | • 5; ○ 6                     |
| <b>Number of ultrasonic radars</b>      | • 12                         |
| <b>Millimeter wave radar quantity</b>   | • 3; ○ 5                     |

## Driving Hardware (continued)

|                                     |               |
|-------------------------------------|---------------|
| <b>Number of cameras in the car</b> | ○ 1 (USD 309) |
|-------------------------------------|---------------|

## In-car charging

|  |  |
|--|--|
| <b>Multimedia/charging port</b>                | •Type-C                                |
| <b>Number of USB/Type-C ports</b>              | • 2 in the front row/2 in the back row |
| <b>Mobile phone wireless charging function</b> | • Front row                            |

## Optional Package

|                         |   |
|-------------------------|---|
| <b>Optional Package</b> | Midnight Suite (USD 294; includes: custom black high-gloss trim strips, custom black high-gloss exterior components); Golden Appearance Package (USD 1,294; includes: 19-inch aerodynamic wheels with Type 934 spokes, Titan Gold finish, Titan Gold exterior components) |
|-------------------------|---|

---

"●" = Standard equipment

"-" = Not available

"○" = Optional equipment.

Note: These are Chinese market vehicles. Warranty coverage is not available outside of China.