

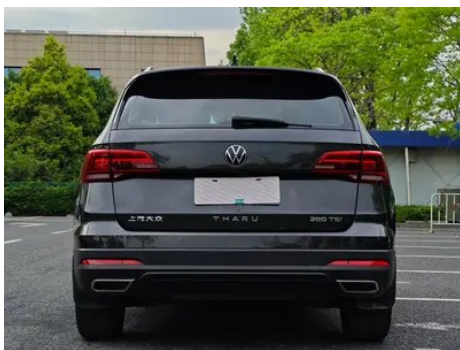
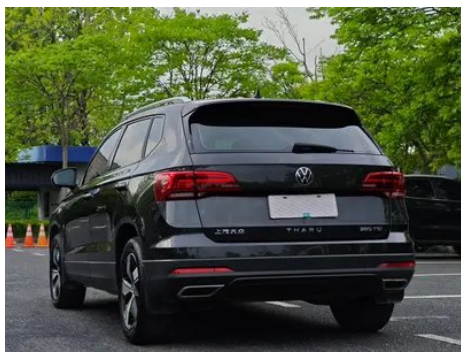
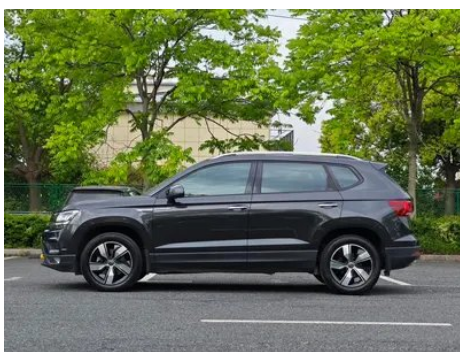
Vehicle Detail Report

Volkswagen Tharu 2021 280TSI 2WD Comfort Version

Basic Information

Brand	Volkswagen
Mileage	62,000 km
Color	Dark gray
First Registration	2022-01-01
Transfer Count	0

Vehicle Images





Vehicle Condition

1. Right rocker panel, Inner-side deformation. 2. Driver's seat rails and frame, Signs of removal. 3. Front passenger seat rails and frame, Signs of removal.

Configuration Information

Model Information

Model Name	Volkswagen Tharu 2021 280TSI 2WD Comfort Version
Launch Date	2020.09

Basic parameters

Vehicle Class	Compact SUV
Energy Type	Gasoline
Maximum Power (kW)	110
Maximum Torque (N·m)	250
Transmission	7-speed dry dual clutch
Body Type	SUV
Engine	1.4L 150 hp L4
Dimensions (L×W×H) (mm)	4453*1841*1632
Official 0-100 km/h Acceleration (s)	-
Top Speed (km/h)	200
Curb Weight (kg)	1405
Maximum Gross Weight (kg)	-
NEDC Combined Fuel Consumption (L/100km)	5.9

engine

Engine Model	EA211-DJS
Displacement (mL)	1395
Displacement (L)	1.4
Induction Type	Turbocharging
Cylinder Arrangement	L

engine (continued)

Number of Cylinders	4
Valves per Cylinder	4
Valve Train	DOHC
Maximum Power (PS)	150
Max Power Speed (rpm)	5000
Max Torque Speed (rpm)	1750-3000
Maximum net power (kW)	110
Fuel Grade	95.
Fuel Delivery System	Direct injection
Cylinder Head Material	Aluminum alloy
Cylinder Block Material	Aluminum alloy
Engine layout	Horizontal

Screen/System

Central control color screen	<ul style="list-style-type: none">• Touch LCD screen
Infotainment Screen Size	<ul style="list-style-type: none">• 8 inches
Bluetooth/In-car Phone	<ul style="list-style-type: none">•
Smartphone Integration/Mirroring	<ul style="list-style-type: none">• Apple CarPlay support;• Baidu CarLife support;• OEM smartphone integration/mirroring

Body

Length (mm)	4453
Width (mm)	1841
Height (mm)	1632
Wheelbase (mm)	2680
Front Track (mm)	1576
Rear Track (mm)	1541
Door Opening Type	swing door
Number of Doors	5
Number of Seats	5
Fuel Tank Capacity (L)	51
Trunk volume (L)	455-1543
Drag Coefficient (Cd)	-
Approach Angle (°)	19
Departure Angle (°)	21

Gearbox

Abbreviation	7-speed dry dual clutch
Number of Gears	7
Transmission Type	Dry Dual-Clutch Transmission (DCT)

Chassis steering

Drive Type	Front-engine, Front-wheel drive (FF)
Front Suspension Type	MacPherson independent suspension
Rear Suspension Type	Multi-link independent suspension
Power Steering Type	Electric power assistance
Vehicle structure	bearing type

Seat Configuration

Seat Material	<ul style="list-style-type: none">• Imitation leather
Main seat adjustment	<ul style="list-style-type: none">• Front and rear adjustment;• Backrest adjustment;• Height adjustment (2-way);• Lumbar support (2-way)
Co-seat adjustment method	<ul style="list-style-type: none">• Front and rear adjustment;• Backrest adjustment;• Height adjustment (2-way)
Electric adjustment of driver's seat and passenger seat	-
Front passenger seat rear adjustable buttons	-
Rear seat folding	<ul style="list-style-type: none">• Proportional down
Front/rear center armrest	Front •/Rear •
Rear cup holder	<ul style="list-style-type: none">•

Active safety

Anti-lock Braking System (ABS)	<ul style="list-style-type: none">•
Electronic Brakeforce Distribution (EBD/CBC)	<ul style="list-style-type: none">•
Brake Assist System (EBA/BAS/BA)	<ul style="list-style-type: none">•
Traction Control System (ASR/TCS/TRC)	<ul style="list-style-type: none">•
Electronic Stability Control (ESC/ESP/DSC)	<ul style="list-style-type: none">•
Tire Pressure Monitoring System (TPMS)	<ul style="list-style-type: none">• Tire pressure alarm

Active safety (continued)

Seat Belt Reminder	• Front row
ISOFIX Child Seat Anchors	•
Lane Departure Warning System (LDWS)	-
Autonomous Emergency Braking (AEB)	-
Driver Fatigue Detection	•

Air conditioning/refrigerator

Air conditioning temperature control method	○ manual air conditioning • Automatic air conditioning
Rear Independent Climate Control	-
Rear seat air vents	•
Temperature zone control	•
Car air purifier	-
In-cabin PM2.5 Filter	•

Passive safety

Driver/passenger airbag	Main •/Deputy •
Front/rear side airbags	Front •/Rear-
Front/rear head airbags (curtain airbags)	Front •/Rear •

Wheel brake

Front Brake Type	Ventilation disc
Rear Brake Type	Disc
Parking brake type	Electronic Parking
Front Tire Size	-
Rear Tire Size	225/55 R17
Spare Tire Size	Not full-size

Audio/Interior Lighting

Number of speakers	• 6 speakers
Interior ambient lighting	• Monochrome

Driving functions

Navigation traffic information display	-
Lane assist	-

Driving functions (continued)

Lane Keeping Assist System	-
Cruise control system	• Cruise control
Satellite navigation system	-
Parking Assist	-

Exterior lighting

Low beam light source	• LED
High beam light source	• LED
LED daytime running lights	•
Adaptive high and low beam	-
Automatic headlights	•
Front fog lights	• Halogen
Height-adjustable headlights	•
Headlight Delay Off	•
Turn signal lamp	•

Exterior mirrors

Exterior mirror function	• Electric adjustment; • Mirror heating
---------------------------------	-----------------------------------------

Appearance/anti-theft

Rim material	• Aluminum alloy
Electric trunk	-
Electronic engine immobilizer	•
Central locking system in the car	•
Key Type	• Remote key
Keyless start system	•
Keyless entry function	• Front row
Roof rack	•

Skylight/Glass

Sunroof Type	• Openable panoramic sunroof
Front/rear electric windows	Front •/Rear •

Skylight/Glass (continued)

One-touch window lifting function	<ul style="list-style-type: none">• Full vehicle
Window anti-pinch function	<ul style="list-style-type: none">•
Car makeup mirror	<ul style="list-style-type: none">• Main driver's lamp; • co-pilot's lamp
Rear wiper	<ul style="list-style-type: none">•
Rain sensor wiper function	<ul style="list-style-type: none">• Rainfall-sensing

Interior and exterior color

Exterior Color	Ink wash gray #636571 Lake-Glow Blue #1182A0 Modern Gold #B4A08C carbon crystal ash #5A6E87 Hyun Ya Brown #3E3025 Elegant White #FCFFFF
Interior Color	cool black #000000 Black Elegant Brown #131A22 #B68E7E

Steering wheel/interior mirror

Steering Wheel Material	<ul style="list-style-type: none">• Leather
Steering wheel position adjustment	<ul style="list-style-type: none">• Manual up and down front and rear adjustment
Multi-function steering wheel	<ul style="list-style-type: none">•
Heated Steering Wheel	-
Steering wheel memory	-
Trip computer display screen	<ul style="list-style-type: none">• Monochrome
Full LCD instrument panel	-
Interior rearview mirror function	<ul style="list-style-type: none">• Manual anti-glare

Intelligent configuration

Connected Car Services	-
OTA Updates	-

Driving Control

Driving mode switch	<ul style="list-style-type: none">• Movement
Automatic parking	<ul style="list-style-type: none">•
Hill start assist	<ul style="list-style-type: none">•
Engine start-stop technology	<ul style="list-style-type: none">•

Driving Hardware

Driving Hardware (continued)

Front/rear parking radar	Front-/Rear •
---------------------------------	---------------

In-car charging

Multimedia/charging port	•USB;•Type-C
Number of USB/Type-C ports	• 1 in the front row/2 in the back row
Luggage compartment 12V power socket	•

"●" = Standard equipment

"-" = Not available

"○" = Optional equipment.

Note: These are Chinese market vehicles. Warranty coverage is not available outside of China.