

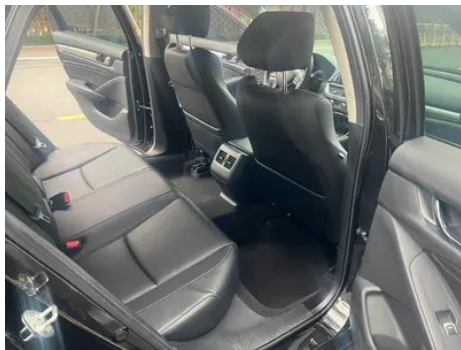
Vehicle Detail Report

Honda Accord 2021 260TURBO Luxury Star Limited Edition

Basic Information

Brand	Honda
Mileage	72,000 km
Color	Black
First Registration	2021-06-01
Transfer Count	1

Vehicle Images





Vehicle Condition

1. Right rocker panel, Inner-side deformation. 2. Inner side of left B-pillar, Dent. 3. Inner side of right B-pillar, Dent. 4. Left rear quarter panel, Paint repair, Body panel repair. 5. Right rear quarter panel, Paint repair, Body panel repair.

Configuration Information

Model Information

Model Name	Accord 2021 260TURBO Luxury Starry Sky Limited Edition
Launch Date	2020.09

Basic parameters

Vehicle Class	Mid-size car
Energy Type	Gasoline
Maximum Power (kW)	143
Maximum Torque (N·m)	260
Transmission	CVT continuously variable transmission
Body Type	Sedan
Engine	1.5T 194 horsepower L4
Dimensions (L×W×H) (mm)	4893*1862*1449
Official 0-100 km/h Acceleration (s)	-
Top Speed (km/h)	-
Curb Weight (kg)	1495
Maximum Gross Weight (kg)	-

Basic parameters (continued)

NEDC Combined Fuel Consumption (L/100km)	6
---	---

engine

Engine Model	L15BN/L15CF
Displacement (mL)	1498
Displacement (L)	1.5
Induction Type	Turbocharging
Cylinder Arrangement	L
Number of Cylinders	4
Valves per Cylinder	4
Compression Ratio	10.3
Valve Train	DOHC
Maximum Power (PS)	194
Max Power Speed (rpm)	5500
Max Torque Speed (rpm)	1600-5000
Maximum net power (kW)	143
Fuel Grade	92.
Fuel Delivery System	Direct injection
Cylinder Head Material	Aluminum alloy
Cylinder Block Material	Aluminum alloy
Engine layout	Horizontal
Engine-specific technologies	VTEC

Screen/System

Central control color screen	<ul style="list-style-type: none">• Ordinary LCD screen
Infotainment Screen Size	<ul style="list-style-type: none">• 7 inches
Bluetooth/In-car Phone	<ul style="list-style-type: none">•

Body

Length (mm)	4893
Width (mm)	1862
Height (mm)	1449
Wheelbase (mm)	2830
Front Track (mm)	1600
Rear Track (mm)	1610

Body (continued)

Door Opening Type	-
Number of Doors	4
Number of Seats	5
Fuel Tank Capacity (L)	56
Trunk volume (L)	-
Drag Coefficient (Cd)	-

Gearbox

Abbreviation	CVT continuously variable transmission
Number of Gears	stepless speed change
Transmission Type	Continuously Variable Transmission (CVT)

Chassis steering

Drive Type	Front-engine, Front-wheel drive (FF)
Front Suspension Type	MacPherson independent suspension
Rear Suspension Type	Multi-link independent suspension
Power Steering Type	Electric power assistance
Vehicle structure	bearing type

Seat Configuration

Seat Material	<ul style="list-style-type: none">• Imitation leather
Main seat adjustment	<ul style="list-style-type: none">• Front and rear adjustment;• Backrest adjustment;• Height adjustment (4-way)
Co-seat adjustment method	<ul style="list-style-type: none">• Front and rear adjustment;• Backrest adjustment
Electric adjustment of driver's seat and passenger seat	Main •/Deputy •
Front passenger seat rear adjustable buttons	-
Rear seat folding	<ul style="list-style-type: none">• Overall down
Front/rear center armrest	Front •/Rear •
Rear cup holder	<ul style="list-style-type: none">•

Active safety

Anti-lock Braking System (ABS)	<ul style="list-style-type: none">•
Electronic Brakeforce Distribution (EBD/CBC)	<ul style="list-style-type: none">•

Active safety (continued)

Brake Assist System (EBA/BAS/BA)	•
Traction Control System (ASR/TCS/TRC)	•
Electronic Stability Control (ESC/ESP/DSC)	•
Tire Pressure Monitoring System (TPMS)	• Tire pressure alarm
Seat Belt Reminder	• Front row
ISOFIX Child Seat Anchors	•
Lane Departure Warning System (LDWS)	•
Autonomous Emergency Braking (AEB)	•
Driver Fatigue Detection	•

Air conditioning/refrigerator

Air conditioning temperature control method	• Automatic air conditioning
Rear Independent Climate Control	-
Rear seat air vents	•
Temperature zone control	•
Car air purifier	-
In-cabin PM2.5 Filter	•

Passive safety

Driver/passenger airbag	Main •/Deputy •
Front/rear side airbags	Front •/Rear-
Front/rear head airbags (curtain airbags)	Front •/Rear •
Passive pedestrian protection	•

Wheel brake

Front Brake Type	Ventilation disc
Rear Brake Type	Disc
Parking brake type	Electronic Parking
Front Tire Size	225/50 R17
Rear Tire Size	225/50 R17

Wheel brake (continued)

Spare Tire Size	Not full-size
------------------------	---------------

Audio/Interior Lighting

Number of speakers	• 4 speakers
---------------------------	--------------

Driving functions

Navigation traffic information display	-
Lane assist	-
Lane Keeping Assist System	•
Cruise control system	• Full speed adaptive cruise
Satellite navigation system	-
Road traffic sign recognition	•
Parking Assist	-

Exterior lighting

Low beam light source	•LED
High beam light source	• Halogen
LED daytime running lights	•
Adaptive high and low beam	•
Automatic headlights	•
Front fog lights	•LED
Height-adjustable headlights	•
Headlight Delay Off	•

Exterior mirrors

Exterior mirror function	• Electric adjustment; • Electric folding; • Mirror heating
---------------------------------	---

Appearance/anti-theft

Rim material	• Aluminum alloy
Electric trunk	-
Electronic engine immobilizer	•
Central locking system in the car	•
Key Type	• Remote key

Appearance/anti-theft (continued)

Keyless start system	•
Active closed grille	•

Skylight/Glass

Sunroof Type	• Electric sunroof
Front/rear electric windows	Front •/Rear •
One-touch window lifting function	• Front row
Window anti-pinch function	•
Car makeup mirror	• Main driver's lamp; • co-pilot's lamp
Rear wiper	-
Side window multi-layer soundproof glass	• Front row

Interior and exterior color

Exterior Color	Star Blue:#1F3058
Interior Color	Black:#000000

Steering wheel/interior mirror

Steering Wheel Material	• Leather
Steering wheel position adjustment	• Manual up and down front and rear adjustment
Multi-function steering wheel	•
Heated Steering Wheel	-
Steering wheel memory	-
Trip computer display screen	• Color
Full LCD instrument panel	-
LCD instrument size	• 7 inches
Interior rearview mirror function	• Manual anti-glare

Intelligent configuration

Connected Car Services	-
OTA Updates	-
Active Noise Cancellation	•

Driving Control

Driving mode switch	• Movement; • Economy
----------------------------	-----------------------

Driving Control (continued)

Automatic parking	•
Hill start assist	•
Variable steering ratio	•
Engine start-stop technology	•

Driving Hardware

Front/rear parking radar	Front •/Rear •
Driving Assistance Camera System	• Reversing image

In-car charging

Multimedia/charging port	•USB
Number of USB/Type-C ports	• 1 in the front row
Mobile phone wireless charging function	• Front row

"●" = Standard equipment

"_" = Not available

"○" = Optional equipment.

Note: These are Chinese market vehicles. Warranty coverage is not available outside of China.