

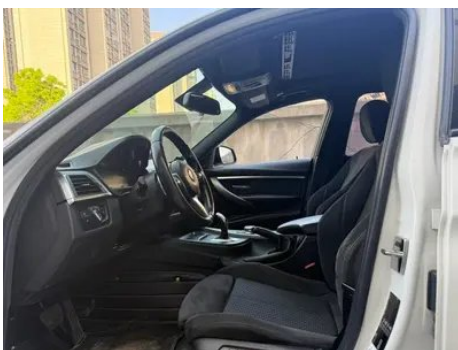
Vehicle Detail Report

BMW 3 Series 2018 320i M Sports Obsidian Night Edition

Basic Information

Brand	BMW
Mileage	91,000 km
Color	White
First Registration	2018-06-01
Transfer Count	0

Vehicle Images





Vehicle Condition

1. Hood, Paint repair, Body panel repair, The support rod is damaged. 2. Front bumper, Paint chip, Paint repair, Replaced, Scrape, Signs of removal. 3. Rear bumper, Paint chip, Scrape. 4. Left front door, Paint chip. 5. Right front door, Paint chip, Scratch damage. 6. Left rear door, Paint chip, Scratch damage. 7. Right rear door, Paint chip. 8. Right front fender, Paint repair, Body panel repair. 9. Windshield, Stone chip. 10. Right headlight, Signs of removal, Replaced.

Configuration Information

Model Information

Model Name	BMW 3 Series 2018 320i M Sports Obsidian Night Edition
Launch Date	2017.09

Basic parameters

Vehicle Class	Mid-size car
Energy Type	Gasoline
Maximum Power (kW)	135
Maximum Torque (N·m)	270
Transmission	8-gear manual integration
Body Type	Sedan
Engine	2.0L 184 hp L4
Dimensions (L×W×H) (mm)	4650*1811*1454
Official 0-100 km/h Acceleration (s)	7.3
Top Speed (km/h)	235
Curb Weight (kg)	-
Maximum Gross Weight (kg)	-
NEDC Combined Fuel Consumption (L/100km)	6.2

engine

Engine Model	B48B20C
Displacement (mL)	1998

engine (continued)

Displacement (L)	2.0
Induction Type	Turbocharging
Cylinder Arrangement	L
Number of Cylinders	4
Valves per Cylinder	4
Valve Train	DOHC
Maximum Power (PS)	184
Max Power Speed (rpm)	5000-6500
Max Torque Speed (rpm)	1350-4600
Maximum net power (kW)	-
Fuel Grade	95.
Fuel Delivery System	Direct injection
Cylinder Head Material	Aluminum alloy
Cylinder Block Material	Aluminum alloy

Screen/System

Central control color screen	<ul style="list-style-type: none">•
Infotainment Screen Size	<ul style="list-style-type: none">• 8.8 inches
Bluetooth/In-car Phone	<ul style="list-style-type: none">•
Smartphone Integration/Mirroring	<ul style="list-style-type: none">○
In-car CD/DVD Player	<ul style="list-style-type: none">• Single disc CD

Body

Length (mm)	4650
Width (mm)	1811
Height (mm)	1454
Wheelbase (mm)	2810
Front Track (mm)	1543
Rear Track (mm)	1583
Door Opening Type	-
Number of Doors	4
Number of Seats	5
Fuel Tank Capacity (L)	60
Trunk volume (L)	480

Body (continued)

Drag Coefficient (Cd)	-
------------------------------	---

Gearbox

Abbreviation	8-gear manual integration
Number of Gears	8
Transmission Type	Automatic Transmission with Manual Mode (AT)

Chassis steering

Drive Type	Front-engine, Rear-wheel drive (FR)
Front Suspension Type	Dual-ball-joint MacPherson independent suspension
Rear Suspension Type	Multi-link independent suspension
Power Steering Type	Electric power assistance
Vehicle structure	bearing type

Seat Configuration

Seat Material	○ Genuine leather (USD 2,147)
Main seat adjustment	• Front and rear adjustment; • Backrest adjustment; • Height adjustment (2-way);○ Height adjustment (4-way)
Co-seat adjustment method	• Front and rear adjustment; • Backrest adjustment
Electric adjustment of driver's seat and passenger seat	Main •/Deputy •
Front seat functions	○ Heating (USD 485)
Electric seat memory function	•
Front passenger seat rear adjustable buttons	-
Rear seat folding	• Proportional down
Front/rear center armrest	Front •/Rear •
Rear cup holder	•
Sports style seats	•

Active safety

Anti-lock Braking System (ABS)	•
Electronic Brakeforce Distribution (EBD/CBC)	•

Active safety (continued)

Brake Assist System (EBA/BAS/BA)	•
Traction Control System (ASR/TCS/TRC)	•
Electronic Stability Control (ESC/ESP/DSC)	•
Tire Pressure Monitoring System (TPMS)	•
Seat Belt Reminder	•
ISOFIX Child Seat Anchors	•
Lane Departure Warning System (LDWS)	-
Autonomous Emergency Braking (AEB)	-
Driver Fatigue Detection	•
Emergency Call System (eCall)	•

Air conditioning/refrigerator

Air conditioning temperature control method	• Automatic air conditioning
Rear Independent Climate Control	-
Rear seat air vents	•
Temperature zone control	•
Car air purifier	-
In-cabin PM2.5 Filter	-

Passive safety

Driver/passenger airbag	Main •/Deputy •
Front/rear side airbags	Front •/Rear-
Front/rear head airbags (curtain airbags)	Front •/Rear •
Run-flat tires	•

Wheel brake

Front Brake Type	Ventilation disc
Rear Brake Type	Ventilation disc
Parking brake type	handbrake
Front Tire Size	225/45 R18

Wheel brake (continued)

Rear Tire Size	255/40 R18
Spare Tire Size	None

Audio/Interior Lighting

Speaker Brand Name	<ul style="list-style-type: none">• Harman/Kardon Harman Kardon
Number of speakers	<ul style="list-style-type: none">• ≥ 12 horns
Interior ambient lighting	<ul style="list-style-type: none">• Two colors

Driving functions

Navigation traffic information display	-
Lane assist	-
Lane Keeping Assist System	-
Cruise control system	<ul style="list-style-type: none">• Cruise control
Satellite navigation system	<ul style="list-style-type: none">•
Parking Assist	-

Exterior lighting

Low beam light source	<ul style="list-style-type: none">• LED
High beam light source	<ul style="list-style-type: none">• LED
LED daytime running lights	<ul style="list-style-type: none">•
Adaptive high and low beam	-
Automatic headlights	<ul style="list-style-type: none">•
Front fog lights	<ul style="list-style-type: none">•
Height-adjustable headlights	<ul style="list-style-type: none">•
Headlight Delay Off	-

Exterior mirrors

Exterior mirror function	<ul style="list-style-type: none">• Electric adjustment;• Electric folding;• Rearview mirror memory;• Rearview mirror heating;• Automatic anti-glare
---------------------------------	--

Appearance/anti-theft

Rim material	<ul style="list-style-type: none">• Aluminum alloy
Electronic engine immobilizer	<ul style="list-style-type: none">•
Central locking system in the car	<ul style="list-style-type: none">•

Appearance/anti-theft (continued)

Key Type	• Remote key
Keyless start system	•
Keyless entry function	○
Appearance Kit	• Sports style
Hands-free Trunk	○

Skylight/Glass

Sunroof Type	• Electric sunroof
Front/rear electric windows	Front •/Rear •
One-touch window lifting function	• Full vehicle
Window anti-pinch function	•
Car makeup mirror	• Main driver's lamp; • co-pilot's lamp
Rear wiper	-
Rain sensor wiper function	• Rainfall-sensing

Interior and exterior color

Exterior Color	Snow Mountain White:#FAFAFA; Estolan:#1559AC; Gemstone green:#242224; Melbourne Red:#610303; Cedar Grey:#909090
Interior Color	Black:#000000; Black/cognac:#000000/#78593D; Black/mocha:#000000/#423534; Black/coral red:#000000/#9E2F35; Ink gray:#1F1F1F

Steering wheel/interior mirror

Steering Wheel Material	• Leather
Steering wheel position adjustment	• Manual up and down front and rear adjustment
Multi-function steering wheel	•
Heated Steering Wheel	○
Steering wheel memory	-
Trip computer display screen	•
Full LCD instrument panel	•
Interior rearview mirror function	• Automatic anti-glare

Steering wheel/interior mirror (continued)

HUD Head Up Digital Display	○
Steering Wheel Shift Paddles	•

Intelligent configuration

Connected Car Services	•
OTA Updates	-

Driving Control

Automatic parking	-
Hill start assist	•
Engine start-stop technology	•

Driving Hardware

Front/rear parking radar	Front •/Rear •
Driving Assistance Camera System	• Reversing image; ○ 360-degree panoramic image

In-car charging

Multimedia/charging port	•USB
---------------------------------	------

"●" = Standard equipment

"-" = Not available

"○" = Optional equipment.

Note: These are Chinese market vehicles. Warranty coverage is not available outside of China.