

Vehicle Detail Report

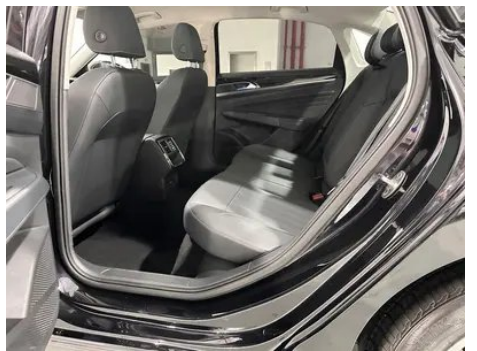
Volkswagen Passat 2024 280TSI Business Edition

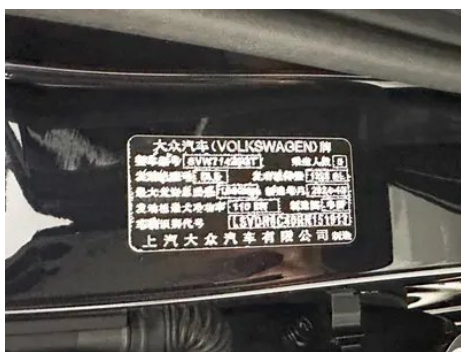
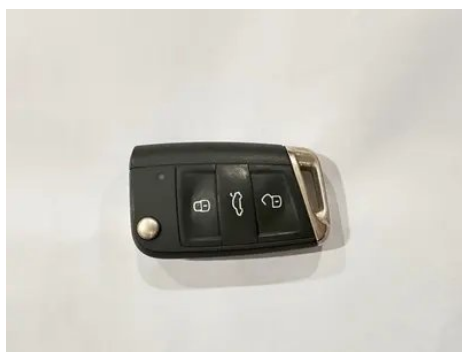
Basic Information

| | |
|--------------------|------------|
| Brand | Volkswagen |
| Mileage | 58,700 km |
| Color | Black |
| First Registration | 2025-02-01 |
| Transfer Count | 2 |

Vehicle Images







Vehicle Condition

1. Left rocker panel, Outer-side deformation. 2. Left rear quarter panel, Deformation.

Configuration Information

Model Information

| | |
|--------------------|--|
| Model Name | Volkswagen Passat 2024 280TSI Business Edition |
| Launch Date | 2023.10 |

Basic parameters

| | |
|---|-------------------------|
| Vehicle Class | Mid-size car |
| Energy Type | Gasoline |
| Maximum Power (kW) | 110 |
| Maximum Torque (N·m) | 250 |
| Transmission | 7-speed dry dual clutch |
| Body Type | Sedan |
| Engine | 1.4L 150 hp L4 |
| Dimensions (L×W×H) (mm) | 4948*1836*1469 |
| Official 0-100 km/h Acceleration (s) | 9.1 |
| Top Speed (km/h) | 210 |
| Curb Weight (kg) | 1500 |
| Maximum Gross Weight (kg) | 1960 |
| NEDC Combined Fuel Consumption (L/100km) | 5.8 |
| WLTP Combined Fuel Consumption (L/100km) | 6.1 |

engine

| | |
|--------------------------|-----------|
| Engine Model | EA211-DLE |
| Displacement (mL) | 1395 |
| Displacement (L) | 1.4 |

engine (continued)

| | |
|--------------------------------|------------------|
| Induction Type | Turbocharging |
| Cylinder Arrangement | L |
| Number of Cylinders | 4 |
| Valves per Cylinder | 4 |
| Valve Train | DOHC |
| Maximum Power (PS) | 150 |
| Max Power Speed (rpm) | 4800-5200 |
| Max Torque Speed (rpm) | 1550-3200 |
| Maximum net power (kW) | 110 |
| Fuel Grade | 95. |
| Fuel Delivery System | Direct injection |
| Cylinder Head Material | Aluminum alloy |
| Cylinder Block Material | Aluminum alloy |
| Engine layout | Horizontal |

Screen/System

| | |
|---|--|
| Central control color screen | <ul style="list-style-type: none">• Touch LCD screen |
| Infotainment Screen Size | <ul style="list-style-type: none">• 8 inches |
| Bluetooth/In-car Phone | <ul style="list-style-type: none">• |
| Smartphone Integration/Mirroring | <ul style="list-style-type: none">• Apple CarPlay support;• Baidu CarLife support;• OEM smartphone integration/mirroring |
| Voice recognition control system | <ul style="list-style-type: none">• Multimedia system;• Telephone |
| In-vehicle intelligent system | <ul style="list-style-type: none">• MOS Smart Car |

Body

| | |
|--------------------------|------------|
| Length (mm) | 4948 |
| Width (mm) | 1836 |
| Height (mm) | 1469 |
| Wheelbase (mm) | 2871 |
| Front Track (mm) | 1584 |
| Rear Track (mm) | 1570 |
| Door Opening Type | swing door |
| Number of Doors | 4 |
| Number of Seats | 5 |

Body (continued)

| | |
|-------------------------------|------|
| Fuel Tank Capacity (L) | 68.5 |
| Trunk volume (L) | 521 |
| Drag Coefficient (Cd) | - |
| Approach Angle (°) | 14 |
| Departure Angle (°) | 14 |

Gearbox

| | |
|--------------------------|------------------------------------|
| Abbreviation | 7-speed dry dual clutch |
| Number of Gears | 7 |
| Transmission Type | Dry Dual-Clutch Transmission (DCT) |

Chassis steering

| | |
|------------------------------|--------------------------------------|
| Drive Type | Front-engine, Front-wheel drive (FF) |
| Front Suspension Type | MacPherson independent suspension |
| Rear Suspension Type | Multi-link independent suspension |
| Power Steering Type | Electric power assistance |
| Vehicle structure | bearing type |

Seat Configuration

| | |
|--|---|
| Seat Material | <ul style="list-style-type: none">• Imitation leather |
| Main seat adjustment | <ul style="list-style-type: none">• Front and rear adjustment;• Backrest adjustment;• Height adjustment (2-way) |
| Co-seat adjustment method | <ul style="list-style-type: none">• Front and rear adjustment;• Backrest adjustment |
| Electric adjustment of driver's seat and passenger seat | - |
| Front passenger seat rear adjustable buttons | - |
| Rear seat folding | <ul style="list-style-type: none">• Proportional down |
| Front/rear center armrest | Front •/Rear • |
| Rear cup holder | <ul style="list-style-type: none">• |

Active safety

| | |
|---|---|
| Anti-lock Braking System (ABS) | <ul style="list-style-type: none">• |
| Electronic Brakeforce Distribution (EBD/CBC) | <ul style="list-style-type: none">• |
| Brake Assist System (EBA/BAS/BA) | <ul style="list-style-type: none">• |

Active safety (continued)

| | |
|---|-----------------------|
| Traction Control System (ASR/TCS/TRC) | • |
| Electronic Stability Control (ESC/ESP/DSC) | • |
| Tire Pressure Monitoring System (TPMS) | • Tire pressure alarm |
| Seat Belt Reminder | • Front row |
| ISOFIX Child Seat Anchors | • |
| Lane Departure Warning System (LDWS) | - |
| Autonomous Emergency Braking (AEB) | • |
| Driver Fatigue Detection | - |
| Forward Collision Warning (FCW) | • |

Air conditioning/refrigerator

| | |
|--|---------------------------|
| Air conditioning temperature control method | • Manual air conditioning |
| Rear Independent Climate Control | - |
| Rear seat air vents | • |
| Temperature zone control | - |
| Car air purifier | • |
| In-cabin PM2.5 Filter | • |

Passive safety

| | |
|--|-----------------|
| Driver/passenger airbag | Main •/Deputy • |
| Front/rear side airbags | Front •/Rear- |
| Front/rear head airbags (curtain airbags) | Front •/Rear • |

Wheel brake

| | |
|---------------------------|--------------------|
| Front Brake Type | Ventilation disc |
| Rear Brake Type | Disc |
| Parking brake type | Electronic Parking |
| Front Tire Size | 215/60 R16 |
| Rear Tire Size | 215/60 R16 |
| Spare Tire Size | Not full-size |

Audio/Interior Lighting

Audio/Interior Lighting (continued)

| | |
|---------------------------|--------------|
| Number of speakers | • 8 speakers |
|---------------------------|--------------|

Driving functions

| | |
|---|---|
| Navigation traffic information display | - |
| Lane assist | - |
| Lane Keeping Assist System | - |
| Satellite navigation system | - |
| Parking Assist | - |

Exterior lighting

| | |
|-------------------------------------|------|
| Low beam light source | •LED |
| High beam light source | •LED |
| LED daytime running lights | • |
| Adaptive high and low beam | - |
| Automatic headlights | • |
| Height-adjustable headlights | • |
| Headlight Delay Off | - |
| Headlight rain and fog mode | • |

Exterior mirrors

| | |
|---------------------------------|---|
| Exterior mirror function | • Electric adjustment; • Mirror heating |
|---------------------------------|---|

Appearance/anti-theft

| | |
|--|------------------|
| Rim material | • Aluminum alloy |
| Electronic engine immobilizer | • |
| Central locking system in the car | • |
| Key Type | • Remote key |
| Keyless start system | • |
| Keyless entry function | • Front row |

Skylight/Glass

| | |
|------------------------------------|--------------------|
| Sunroof Type | • Electric sunroof |
| Front/rear electric windows | Front •/Rear • |

Skylight/Glass (continued)

| | |
|--|---|
| One-touch window lifting function | <ul style="list-style-type: none">• Full vehicle |
| Window anti-pinch function | <ul style="list-style-type: none">• |
| Car makeup mirror | <ul style="list-style-type: none">• Main driver's lamp; • co-pilot's lamp |
| Rear wiper | - |

Interior and exterior color

| | |
|-----------------------|--|
| Exterior Color | Xuanwu Black #000000 Glacier blue #73869D silver diamond #B1AFA8 Elegant White #FCFFFF starry night blue #22519C |
| Interior Color | Obsidian Black #000000 |

Steering wheel/interior mirror

| | |
|---|--|
| Steering Wheel Material | <ul style="list-style-type: none">• Plastic |
| Steering wheel position adjustment | <ul style="list-style-type: none">• Manual up and down front and rear adjustment |
| Multi-function steering wheel | <ul style="list-style-type: none">• |
| Heated Steering Wheel | - |
| Steering wheel memory | - |
| Trip computer display screen | <ul style="list-style-type: none">• Color |
| Full LCD instrument panel | - |
| LCD instrument size | <ul style="list-style-type: none">• 8 inches |
| Interior rearview mirror function | <ul style="list-style-type: none">• Manual anti-glare |
| Gear shifting | <ul style="list-style-type: none">• Mechanical gear shift |

Intelligent configuration

| | |
|-----------------------------------|--|
| Connected Car Services | <ul style="list-style-type: none">• |
| OTA Updates | - |
| 4G/5G Network | <ul style="list-style-type: none">•4G |
| Mobile APP remote function | <ul style="list-style-type: none">• Vehicle status check/diagnostics;• Vehicle location / find my car |
| Wi-Fi hotspots | <ul style="list-style-type: none">• |

Driving Control

| | |
|----------------------------|--|
| Driving mode switch | <ul style="list-style-type: none">• Movement |
| Automatic parking | <ul style="list-style-type: none">• |
| Hill start assist | <ul style="list-style-type: none">• |

Driving Control (continued)

| | |
|-------------------------------------|---|
| Engine start-stop technology | • |
|-------------------------------------|---|

Driving Hardware

| | |
|------------------------------------|---------------|
| Front/rear parking radar | Front-/Rear • |
| Number of ultrasonic radars | • 4 |

In-car charging

| | |
|-----------------------------------|--|
| Multimedia/charging port | •USB;•Type-C |
| Number of USB/Type-C ports | • 1 in the front row/2 in the back row |

"●" = Standard equipment

"-" = Not available

"○" = Optional equipment.

Note: These are Chinese market vehicles. Warranty coverage is not available outside of China.