

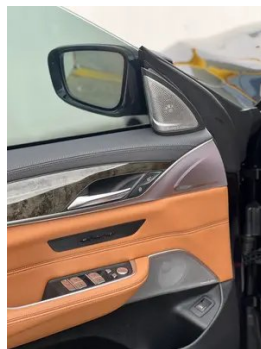
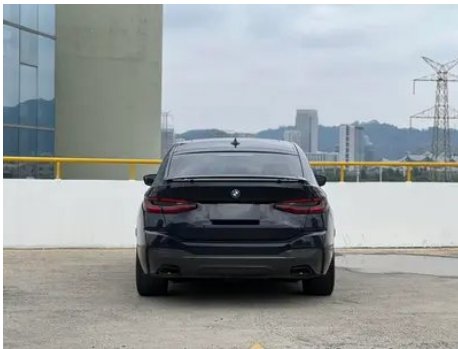
# Vehicle Detail Report

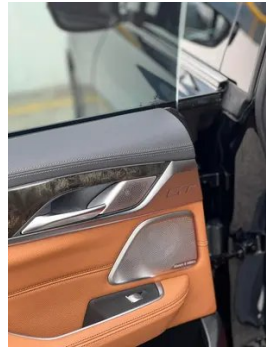
## BMW 6 Series GT 2021 630i M Sports suit

### Basic Information

|                    |                   |
|--------------------|-------------------|
| Brand              | <b>BMW</b>        |
| Mileage            | <b>63,000 km</b>  |
| Color              | <b>Black</b>      |
| First Registration | <b>2022-08-01</b> |
| Transfer Count     | <b>0</b>          |

### Vehicle Images





## Vehicle Condition

1. Driver's seat rails and frame, Signs of removal. 2. Front passenger seat rails and frame, Signs of removal. 3. Left rear quarter panel, Paint repair.

## Configuration Information

### Model Information

|                    |   |
|--------------------|---|
| <b>Model Name</b>  | BMW 6 Series GT 2021 630i M Sports suit |
| <b>Launch Date</b> | 2020.09                                 |

### Basic parameters

|                           |                         |
|---------------------------|-------------------------|
| <b>Vehicle Class</b>      | Mid-size and large cars |
| <b>Energy Type</b>        | Gasoline                |
| <b>Maximum Power (kW)</b> | 190                     |

## Basic parameters (continued)

|   |                           |
|---|---------------------------|
| <b>Maximum Torque (N·m)</b>                     | 400                       |
| <b>Transmission</b>                             | 8-gear manual integration |
| <b>Body Type</b>                                | Liftback                  |
| <b>Engine</b>                                   | 2.0T 258 horsepower L4    |
| <b>Dimensions (L×W×H) (mm)</b>                  | 5103*1904*1550            |
| <b>Official 0-100 km/h Acceleration (s)</b>     | 6.5                       |
| <b>Top Speed (km/h)</b>                         | 250                       |
| <b>Curb Weight (kg)</b>                         | 1880                      |
| <b>Maximum Gross Weight (kg)</b>                | 2460                      |
| <b>NEDC Combined Fuel Consumption (L/100km)</b> | 6.8                       |

## engine

|                                |                  |
|--------------------------------|------------------|
| <b>Engine Model</b>            | B48B20B          |
| <b>Displacement (mL)</b>       | 1998             |
| <b>Displacement (L)</b>        | 2.0              |
| <b>Induction Type</b>          | Turbocharging    |
| <b>Cylinder Arrangement</b>    | L                |
| <b>Number of Cylinders</b>     | 4                |
| <b>Valves per Cylinder</b>     | 4                |
| <b>Valve Train</b>             | DOHC             |
| <b>Bore (mm)</b>               | 82               |
| <b>Stroke (mm)</b>             | 94.6             |
| <b>Maximum Power (PS)</b>      | 258              |
| <b>Max Power Speed (rpm)</b>   | 5000-6500        |
| <b>Max Torque Speed (rpm)</b>  | 1550-4400        |
| <b>Maximum net power (kW)</b>  | 190              |
| <b>Fuel Grade</b>              | 95.              |
| <b>Fuel Delivery System</b>    | Direct injection |
| <b>Cylinder Head Material</b>  | Aluminum alloy   |
| <b>Cylinder Block Material</b> | Aluminum alloy   |
| <b>Engine layout</b>           | Longitudinal     |

## Screen/System

## Screen/System (continued)

|   |  |
|---|--|
| <b>Central control color screen</b>     | <ul style="list-style-type: none"><li>• Touch LCD screen</li></ul>   |
| <b>Infotainment Screen Size</b>         | <ul style="list-style-type: none"><li>• 12.3 inches</li></ul>  |
| <b>Bluetooth/In-car Phone</b>           | <ul style="list-style-type: none"><li>•</li></ul>  |
| <b>Smartphone Integration/Mirroring</b> | <ul style="list-style-type: none"><li>• Apple CarPlay support;</li><li>• Baidu CarLife support</li></ul>                                   |
| <b>Voice recognition control system</b> | <ul style="list-style-type: none"><li>• Multimedia system;</li><li>• Navigation;</li><li>• Telephone;</li><li>• Air conditioning</li></ul> |
| <b>Gesture Control</b>                  | ○(USD 368)   |

## Body

|                               |            |
|-------------------------------|------------|
| <b>Length (mm)</b>            | 5103       |
| <b>Width (mm)</b>             | 1904       |
| <b>Height (mm)</b>            | 1550       |
| <b>Wheelbase (mm)</b>         | 3070       |
| <b>Front Track (mm)</b>       | -          |
| <b>Rear Track (mm)</b>        | -          |
| <b>Door Opening Type</b>      | swing door |
| <b>Number of Doors</b>        | 5          |
| <b>Number of Seats</b>        | 5          |
| <b>Fuel Tank Capacity (L)</b> | 68         |
| <b>Trunk volume (L)</b>       | -          |
| <b>Drag Coefficient (Cd)</b>  | -          |

## Gearbox

|                          |  |
|--------------------------|--|
| <b>Abbreviation</b>      | 8-gear manual integration                    |
| <b>Number of Gears</b>   | 8  |
| <b>Transmission Type</b> | Automatic Transmission with Manual Mode (AT) |

## Chassis steering

|                              |  |
|------------------------------|--|
| <b>Drive Type</b>            | Front-engine, Rear-wheel drive (FR)    |
| <b>Front Suspension Type</b> | Double wishbone independent suspension |
| <b>Rear Suspension Type</b>  | Multi-link independent suspension      |
| <b>Power Steering Type</b>   | Electric power assistance              |
| <b>Vehicle structure</b>     | bearing type                           |

## Seat Configuration

|                      |   |
|----------------------|---|
| <b>Seat Material</b> | <ul style="list-style-type: none"><li>• Leather</li></ul> |
|----------------------|---|

## Seat Configuration (continued)

|  |  |
|--|--|
| <b>Main seat adjustment</b>                                    | <ul style="list-style-type: none"><li>• Front and rear adjustment;</li><li>• Backrest adjustment;</li><li>• Height adjustment (4-way);</li><li>• Leg rest adjustment;</li><li>• Lumbar support (4-way)</li></ul> |
| <b>Co-seat adjustment method</b>                               | <ul style="list-style-type: none"><li>• Front and rear adjustment;</li><li>• Backrest adjustment;</li><li>• Height adjustment (4-way);</li><li>• Leg rest adjustment;</li><li>• Lumbar support (4-way)</li></ul> |
| <b>Electric adjustment of driver's seat and passenger seat</b> | Main •/Deputy •  |
| <b>Front seat functions</b>                                    | <ul style="list-style-type: none"><li>• Heating</li></ul>  |
| <b>Electric seat memory function</b>                           | <ul style="list-style-type: none"><li>• Driving position</li></ul>   |
| <b>Front passenger seat rear adjustable buttons</b>            | -  |
| <b>Second row seat adjustment</b>                              | <ul style="list-style-type: none"><li>• Backrest adjustment</li></ul>  |
| <b>Rear seat folding</b>                                       | <ul style="list-style-type: none"><li>• Proportional down</li></ul>  |
| <b>Front/rear center armrest</b>                               | Front •/Rear •   |
| <b>Rear cup holder</b>   | <ul style="list-style-type: none"><li>•</li></ul>  |
| <b>Sports style seats</b>                                      | <ul style="list-style-type: none"><li>•</li></ul>  |
| <b>Second row seats electrically adjustable</b>                | <ul style="list-style-type: none"><li>•</li></ul>  |

## Active safety

|   |   |
|---|---|
| <b>Anti-lock Braking System (ABS)</b>               | <ul style="list-style-type: none"><li>•</li></ul>                       |
| <b>Electronic Brakeforce Distribution (EBD/CBC)</b> | <ul style="list-style-type: none"><li>•</li></ul>                       |
| <b>Brake Assist System (EBA/BAS/BA)</b>             | <ul style="list-style-type: none"><li>•</li></ul>                       |
| <b>Traction Control System (ASR/TCS/TRC)</b>        | <ul style="list-style-type: none"><li>•</li></ul>                       |
| <b>Electronic Stability Control (ESC/ESP/DSC)</b>   | <ul style="list-style-type: none"><li>•</li></ul>                       |
| <b>Tire Pressure Monitoring System (TPMS)</b>       | <ul style="list-style-type: none"><li>• Tire pressure display</li></ul> |
| <b>Seat Belt Reminder</b>                           | <ul style="list-style-type: none"><li>• Front row</li></ul>             |
| <b>ISOFIX Child Seat Anchors</b>                    | <ul style="list-style-type: none"><li>•</li></ul>                       |

## Active safety (continued)

|   |   |
|---|---|
| <b>Lane Departure Warning System (LDWS)</b> | ○ |
| <b>Autonomous Emergency Braking (AEB)</b>   | • |
| <b>Driver Fatigue Detection</b>             | • |
| <b>Forward Collision Warning (FCW)</b>      | • |
| <b>Emergency Call System (eCall)</b>        | • |

## Air conditioning/refrigerator

|  |                              |
|--|------------------------------|
| <b>Air conditioning temperature control method</b> | • Automatic air conditioning |
| <b>Rear Independent Climate Control</b>            | •                            |
| <b>Rear seat air vents</b>                         | •                            |
| <b>Temperature zone control</b>                    | •                            |
| <b>Car air purifier</b>                            | -                            |
| <b>In-cabin PM2.5 Filter</b>                       | •                            |
| <b>Negative ion generator</b>                      | ○                            |
| <b>Car fragrance device</b>                        | ○(USD 471)                   |

## Passive safety

|  |                 |
|--|-----------------|
| <b>Driver/passenger airbag</b>                   | Main •/Deputy • |
| <b>Front/rear side airbags</b>                   | Front •/Rear-   |
| <b>Front/rear head airbags (curtain airbags)</b> | Front •/Rear •  |
| <b>Run-flat tires</b>                            | •               |
| <b>Passive pedestrian protection</b>             | •               |

## Wheel brake

|                           |                    |
|---------------------------|--------------------|
| <b>Front Brake Type</b>   | Ventilation disc   |
| <b>Rear Brake Type</b>    | Ventilation disc   |
| <b>Parking brake type</b> | Electronic Parking |
| <b>Front Tire Size</b>    | 245/40 R20         |
| <b>Rear Tire Size</b>     | 275/35 R20         |
| <b>Spare Tire Size</b>    | None               |

## Audio/Interior Lighting

## Audio/Interior Lighting (continued)

|                                  |  |
|----------------------------------|--|
| <b>Speaker Brand Name</b>        | <ul style="list-style-type: none"><li>• Harman/Kardon Harman Kardon;</li><li>○ Bowers &amp; Wilkins Bao Hua Wei Jian (USD 4,809)</li></ul> |
| <b>Number of speakers</b>        | <ul style="list-style-type: none"><li>• 16 speakers</li></ul>  |
| <b>Interior ambient lighting</b> | <ul style="list-style-type: none"><li>• 11 colors</li></ul>  |

## Driving functions

|   |  |
|---|--|
| <b>Navigation traffic information display</b> | <ul style="list-style-type: none"><li>•</li></ul>  |
| <b>Lane assist</b>                            | ○  |
| <b>Lane Keeping Assist System</b>             | ○  |
| <b>Cruise control system</b>                  | <ul style="list-style-type: none"><li>• Cruise control; ○ Full speed adaptive cruise</li></ul> |
| <b>Satellite navigation system</b>            | <ul style="list-style-type: none"><li>•</li></ul>  |
| <b>Driving assistance level</b>               | ○L2  |
| <b>Rear Cross Traffic Alert</b>               | ○  |
| <b>Lane centering</b>                         | ○  |
| <b>Road traffic sign recognition</b>          | ○  |
| <b>Tracking reverse</b>                       | <ul style="list-style-type: none"><li>•</li></ul>  |
| <b>Parking Assist</b>                         | <ul style="list-style-type: none"><li>•</li></ul>  |
| <b>Lane Change Assist</b>                     | ○  |

## Exterior lighting

|                                     |   |
|-------------------------------------|---|
| <b>Low beam light source</b>        | <ul style="list-style-type: none"><li>•LED</li></ul>                      |
| <b>High beam light source</b>       | <ul style="list-style-type: none"><li>• LED;○ Laser (USD 1,338)</li></ul> |
| <b>LED daytime running lights</b>   | <ul style="list-style-type: none"><li>•</li></ul>                         |
| <b>Adaptive high and low beam</b>   | <ul style="list-style-type: none"><li>•</li></ul>                         |
| <b>Automatic headlights</b>         | <ul style="list-style-type: none"><li>•</li></ul>                         |
| <b>Height-adjustable headlights</b> | <ul style="list-style-type: none"><li>•</li></ul>                         |
| <b>Headlight Delay Off</b>          | <ul style="list-style-type: none"><li>•</li></ul>                         |
| <b>Turn headlights</b>              | <ul style="list-style-type: none"><li>•</li></ul>                         |

## Exterior mirrors

## Exterior mirrors (continued)

|                                 |   |
|---------------------------------|---|
| <b>Exterior mirror function</b> | <ul style="list-style-type: none"><li>• Electric adjustment;</li><li>• Electric folding;</li><li>• Rearview mirror memory;</li><li>• Rearview mirror heating;</li><li>• Automatic downturning when reversing;</li><li>• Automatic folding when locked;</li><li>• Automatic anti-glare</li></ul> |
|---------------------------------|---|

## Appearance/anti-theft

|  |  |
|--|--|
| <b>Rim material</b>                      | <ul style="list-style-type: none"><li>• Aluminum alloy</li></ul> |
| <b>Electric trunk</b>                    | <ul style="list-style-type: none"><li>•</li></ul>                |
| <b>Electronic engine immobilizer</b>     | <ul style="list-style-type: none"><li>•</li></ul>                |
| <b>Central locking system in the car</b> | <ul style="list-style-type: none"><li>•</li></ul>                |
| <b>Key Type</b>                          | <ul style="list-style-type: none"><li>• Remote key</li></ul>     |
| <b>Keyless start system</b>              | <ul style="list-style-type: none"><li>•</li></ul>                |
| <b>Keyless entry function</b>            | <ul style="list-style-type: none"><li>• Full vehicle</li></ul>   |
| <b>Appearance Kit</b>                    | <ul style="list-style-type: none"><li>• Sports style</li></ul>   |
| <b>Hands-free Trunk</b>                  | <ul style="list-style-type: none"><li>•</li></ul>                |
| <b>Remote start function</b>             | ○(USD 471)   |
| <b>Active closed grille</b>              | <ul style="list-style-type: none"><li>•</li></ul>                |
| <b>Electric door closing</b>             | ○ Full vehicle (USD 941)   |
| <b>Frameless door design</b>             | <ul style="list-style-type: none"><li>•</li></ul>                |
| <b>Electric spoiler</b>                  | <ul style="list-style-type: none"><li>•</li></ul>                |

## Skylight/Glass

|  |   |
|--|---|
| <b>Sunroof Type</b>                      | <ul style="list-style-type: none"><li>• Openable panoramic sunroof</li></ul>                    |
| <b>Front/rear electric windows</b>       | Front •/Rear •  |
| <b>One-touch window lifting function</b> | <ul style="list-style-type: none"><li>• Full vehicle</li></ul>                                  |
| <b>Window anti-pinch function</b>        | <ul style="list-style-type: none"><li>•</li></ul>   |
| <b>Car makeup mirror</b>                 | <ul style="list-style-type: none"><li>• Main driver's lamp;</li><li>• co-pilot's lamp</li></ul> |
| <b>Rear wiper</b>                        | -   |
| <b>Rain sensor wiper function</b>        | <ul style="list-style-type: none"><li>• Rainfall-sensing</li></ul>                              |
| <b>Rear side window sunshades</b>        | ○ Electric (USD 662)  |

## Interior and exterior color

## Interior and exterior color (continued)

|                       |   |
|-----------------------|---|
| <b>Exterior Color</b> | Snow Mountain White #FAFAFA Porti Mango Blue #364D96 Fragrant Red #6E1E24 Mysterious Gray #3C3C3C bernina gray #49484E Ore White #E7E7E7 Charcoal black #0F1319 |
| <b>Interior Color</b> | Cognac:#C3694B; Black:#000000   |

## Steering wheel/interior mirror

|   |  |
|---|--|
| <b>Steering Wheel Material</b>            | <ul style="list-style-type: none"><li>• Leather</li></ul>  |
| <b>Steering wheel position adjustment</b> | <ul style="list-style-type: none"><li>• Electric up and down front and rear adjustment</li></ul> |
| <b>Multi-function steering wheel</b>      | <ul style="list-style-type: none"><li>•</li></ul>  |
| <b>Heated Steering Wheel</b>              | <input type="radio"/> (USD 368)  |
| <b>Steering wheel memory</b>              | <ul style="list-style-type: none"><li>•</li></ul>  |
| <b>Trip computer display screen</b>       | <ul style="list-style-type: none"><li>• Color</li></ul>  |
| <b>Full LCD instrument panel</b>          | <ul style="list-style-type: none"><li>•</li></ul>  |
| <b>LCD instrument size</b>                | <ul style="list-style-type: none"><li>• 12.3 inches</li></ul>                                    |
| <b>Interior rearview mirror function</b>  | <ul style="list-style-type: none"><li>• Automatic anti-glare</li></ul>                           |
| <b>Gear shifting</b>                      | <ul style="list-style-type: none"><li>• Electronic gear shift</li></ul>                          |
| <b>HUD Head Up Digital Display</b>        | <ul style="list-style-type: none"><li>•</li></ul>  |
| <b>ETC Device</b>                         | <input type="radio"/> (USD 147)  |
| <b>Steering Wheel Shift Paddles</b>       | <ul style="list-style-type: none"><li>•</li></ul>  |

## Intelligent configuration

|                                   |  |
|-----------------------------------|--|
| <b>Connected Car Services</b>     | <ul style="list-style-type: none"><li>•</li></ul>    |
| <b>OTA Updates</b>                | <ul style="list-style-type: none"><li>•</li></ul>    |
| <b>4G/5G Network</b>              | <ul style="list-style-type: none"><li>• 4G</li></ul> |
| <b>Mobile APP remote function</b> | <ul style="list-style-type: none"><li>•</li></ul>    |
| <b>Wi-Fi hotspots</b>             | <input type="radio"/>                                |

## Driving Control

|                            |  |
|----------------------------|--|
| <b>Driving mode switch</b> | <ul style="list-style-type: none"><li>• Sport;</li><li>• Economy;</li><li>• Standard/Comfort</li></ul> |
| <b>Automatic parking</b>   | <ul style="list-style-type: none"><li>•</li></ul>  |
| <b>Hill start assist</b>   | <ul style="list-style-type: none"><li>•</li></ul>  |

## Driving Control (continued)

|                                     |   |
|-------------------------------------|---|
| <b>Air Suspension</b>               | • |
| <b>Engine start-stop technology</b> | • |

## Driving Hardware

|   |                              |
|---|------------------------------|
| <b>Front/rear parking radar</b>         | Front •/Rear •               |
| <b>Driving Assistance Camera System</b> | • 360-degree panoramic image |

## In-car charging

|  |  |
|--|--|
| <b>Multimedia/charging port</b>                | •USB;•Type-C                           |
| <b>Number of USB/Type-C ports</b>              | • 2 in the front row/2 in the back row |
| <b>Mobile phone wireless charging function</b> | ○ Front row (USD 868)                  |
| <b>Luggage compartment 12V power socket</b>    | •                                      |

## Optional Package

|                         |  |
|-------------------------|--|
| <b>Optional Package</b> | Automatic driving assistance system Pro(USD 4,015; Including: traffic congestion assistance, lane change assistance, one-key cruise speed setting assistance, emergency stop assistance, etc.) |
|-------------------------|--|

---

"●" = Standard equipment

"\_" = Not available

"○" = Optional equipment.

Note: These are Chinese market vehicles. Warranty coverage is not available outside of China.