

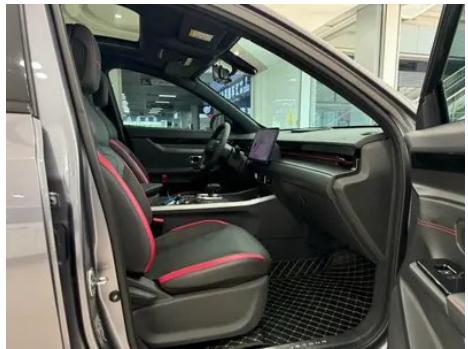
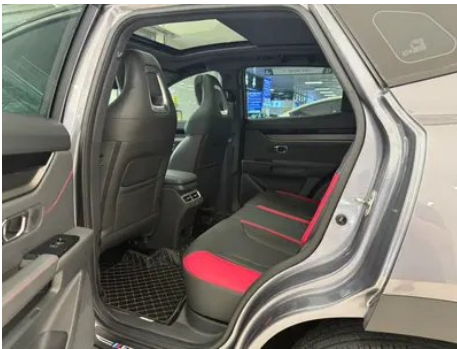
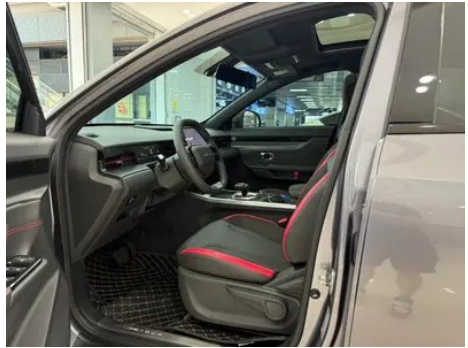
# Vehicle Detail Report

## Jetour Dasheng 2024 1.5T DCT Star Brilliance

### Basic Information

Brand	Jetour
Mileage	20,000 km
Color	Dark gray
First Registration	2024-03-01
Transfer Count	0

### Vehicle Images





## Vehicle Condition

1. Spare wheel well, Water accumulation.

## Configuration Information

### Model Information

<b>Model Name</b>	Jetour Dasheng 2024 1.5T DCT Star Brilliance
<b>Launch Date</b>	2023.10

### Basic parameters

<b>Vehicle Class</b>	Compact SUV
<b>Energy Type</b>	Gasoline
<b>Maximum Power (kW)</b>	115
<b>Maximum Torque (N·m)</b>	230
<b>Transmission</b>	6-speed wet dual-clutch
<b>Body Type</b>	SUV
<b>Engine</b>	1.5T 156 horsepower L4
<b>Dimensions (L×W×H) (mm)</b>	4590*1900*1685
<b>Official 0-100 km/h Acceleration (s)</b>	-
<b>Top Speed (km/h)</b>	180
<b>Curb Weight (kg)</b>	1530
<b>Maximum Gross Weight (kg)</b>	2000
<b>WLTP Combined Fuel Consumption (L/100km)</b>	7.8
<b>First Owner Warranty Policy</b>	Lifetime Warranty/Non-operational (Liability Exemption Terms Subject to Official)

### engine

<b>Engine Model</b>	SQRE4T15C
<b>Displacement (mL)</b>	1498
<b>Displacement (L)</b>	1.5

## engine (continued)

<b>Induction Type</b>	Turbocharging
<b>Cylinder Arrangement</b>	L
<b>Number of Cylinders</b>	4
<b>Valves per Cylinder</b>	4
<b>Compression Ratio</b>	9.5
<b>Valve Train</b>	DOHC
<b>Bore (mm)</b>	77
<b>Stroke (mm)</b>	80.5
<b>Maximum Power (PS)</b>	156
<b>Max Power Speed (rpm)</b>	5500
<b>Max Torque Speed (rpm)</b>	1750-4000
<b>Maximum net power (kW)</b>	108
<b>Fuel Grade</b>	92.
<b>Fuel Delivery System</b>	Multi-point EFI
<b>Cylinder Head Material</b>	Aluminum alloy
<b>Cylinder Block Material</b>	Cast iron
<b>Engine layout</b>	Horizontal
<b>Engine-specific technologies</b>	DVVT

## Screen/System

<b>Central control color screen</b>	<ul style="list-style-type: none"><li>• Touch LCD screen</li></ul>
<b>Infotainment Screen Size</b>	<ul style="list-style-type: none"><li>• 12.8 inches</li></ul>
<b>Bluetooth/In-car Phone</b>	<ul style="list-style-type: none"><li>•</li></ul>
<b>Voice recognition control system</b>	<ul style="list-style-type: none"><li>• Multimedia system;</li><li>• Navigation;</li><li>• Telephone;</li><li>• Air conditioning</li></ul>
<b>Voice wake-up recognition by region</b>	<ul style="list-style-type: none"><li>• Single area</li></ul>
<b>Continuous speech recognition</b>	<ul style="list-style-type: none"><li>•</li></ul>

## Body

<b>Length (mm)</b>	4590
<b>Width (mm)</b>	1900
<b>Height (mm)</b>	1685
<b>Wheelbase (mm)</b>	2720
<b>Front Track (mm)</b>	1610

## Body (continued)

<b>Rear Track (mm)</b>	1615
<b>Door Opening Type</b>	swing door
<b>Number of Doors</b>	5
<b>Number of Seats</b>	5
<b>Fuel Tank Capacity (L)</b>	57
<b>Trunk volume (L)</b>	-
<b>Drag Coefficient (Cd)</b>	-
<b>Approach Angle (°)</b>	19
<b>Departure Angle (°)</b>	22

## Gearbox

<b>Abbreviation</b>	6-speed wet dual-clutch
<b>Number of Gears</b>	6
<b>Transmission Type</b>	Wet Dual-Clutch Transmission (DCT)

## Chassis steering

<b>Drive Type</b>	Front-engine, Front-wheel drive (FF)
<b>Front Suspension Type</b>	MacPherson independent suspension
<b>Rear Suspension Type</b>	Multi-link independent suspension
<b>Power Steering Type</b>	Electric power assistance
<b>Vehicle structure</b>	bearing type

## Seat Configuration

<b>Seat Material</b>	<ul style="list-style-type: none"><li>Fabric</li></ul>
<b>Main seat adjustment</b>	<ul style="list-style-type: none"><li>Front and rear adjustment;</li><li>Backrest adjustment;</li><li>Height adjustment (2-way)</li></ul>
<b>Co-seat adjustment method</b>	<ul style="list-style-type: none"><li>Front and rear adjustment;</li><li>Backrest adjustment</li></ul>
<b>Electric adjustment of driver's seat and passenger seat</b>	-
<b>Front passenger seat rear adjustable buttons</b>	-
<b>Rear seat folding</b>	<ul style="list-style-type: none"><li>Proportional down</li></ul>
<b>Front/rear center armrest</b>	Front •/Rear-
<b>Rear cup holder</b>	-
<b>Sports style seats</b>	<ul style="list-style-type: none"><li></li></ul>

## Active safety

## Active safety (continued)

<b>Anti-lock Braking System (ABS)</b>	•
<b>Electronic Brakeforce Distribution (EBD/CBC)</b>	•
<b>Brake Assist System (EBA/BAS/BA)</b>	•
<b>Traction Control System (ASR/TCS/TRC)</b>	•
<b>Electronic Stability Control (ESC/ESP/DSC)</b>	•
<b>Tire Pressure Monitoring System (TPMS)</b>	• Tire pressure display
<b>Seat Belt Reminder</b>	• Front row
<b>ISOFIX Child Seat Anchors</b>	•
<b>Lane Departure Warning System (LDWS)</b>	-
<b>Autonomous Emergency Braking (AEB)</b>	-
<b>Driver Fatigue Detection</b>	-
<b>Emergency Call System (eCall)</b>	•
<b>Roll-Over Protection System</b>	•

## Air conditioning/refrigerator

<b>Air conditioning temperature control method</b>	• Manual air conditioning
<b>Rear Independent Climate Control</b>	-
<b>Rear seat air vents</b>	•
<b>Temperature zone control</b>	-
<b>Car air purifier</b>	-
<b>In-cabin PM2.5 Filter</b>	-

## Passive safety

<b>Driver/passenger airbag</b>	Main •/Deputy •
<b>Front/rear side airbags</b>	-
<b>Front/rear head airbags (curtain airbags)</b>	-

## Wheel brake

<b>Front Brake Type</b>	Ventilation disc
-------------------------	------------------

## Wheel brake (continued)

<b>Rear Brake Type</b>	Disc
<b>Parking brake type</b>	Electronic Parking
<b>Front Tire Size</b>	235/60 R18
<b>Rear Tire Size</b>	235/60 R18
<b>Spare Tire Size</b>	Not full-size
<b>Spare tire placement</b>	In the trunk

## Audio/Interior Lighting

<b>Number of speakers</b>	• 4 speakers
---------------------------	--------------

## Driving functions

<b>Navigation traffic information display</b>	•
<b>Lane assist</b>	-
<b>Lane Keeping Assist System</b>	-
<b>Cruise control system</b>	• Cruise control
<b>Satellite navigation system</b>	•
<b>Map Brand</b>	• Amap; • Tencent
<b>Parking Assist</b>	-

## Exterior lighting

<b>Low beam light source</b>	•LED
<b>High beam light source</b>	•LED
<b>LED daytime running lights</b>	•
<b>Adaptive high and low beam</b>	-
<b>Automatic headlights</b>	•
<b>Height-adjustable headlights</b>	•
<b>Headlight Delay Off</b>	•

## Exterior mirrors

<b>Exterior mirror function</b>	• Electric adjustment
---------------------------------	-----------------------

## Appearance/anti-theft

<b>Rim material</b>	• Aluminum alloy
<b>Electronic engine immobilizer</b>	•

## Appearance/anti-theft (continued)

<b>Central locking system in the car</b>	<ul style="list-style-type: none"><li>•</li></ul>
<b>Key Type</b>	<ul style="list-style-type: none"><li>• Remote key;</li><li>• Bluetooth key</li></ul>
<b>Keyless start system</b>	<ul style="list-style-type: none"><li>•</li></ul>
<b>Keyless entry function</b>	<ul style="list-style-type: none"><li>• Driving position</li></ul>
<b>Remote start function</b>	<ul style="list-style-type: none"><li>•</li></ul>

## Skylight/Glass

<b>Front/rear electric windows</b>	Front •/Rear •
<b>One-touch window lifting function</b>	<ul style="list-style-type: none"><li>• Full vehicle</li></ul>
<b>Window anti-pinch function</b>	<ul style="list-style-type: none"><li>•</li></ul>
<b>Car makeup mirror</b>	<ul style="list-style-type: none"><li>• Main driving position;</li><li>• First officer</li></ul>
<b>Rear wiper</b>	-

## Interior and exterior color

<b>Exterior Color</b>	phantom gray #606876 Aurora Green #2F4145 bright moon gray #BEC7D7 vanilla blue #97C4E6 Interstellar Black #000000 Moonlight White #FFFFFF
<b>Interior Color</b>	Black Red #000000 #BE0000

## Steering wheel/interior mirror

<b>Steering Wheel Material</b>	<ul style="list-style-type: none"><li>• Cortex</li></ul>
<b>Steering wheel position adjustment</b>	<ul style="list-style-type: none"><li>• Manual up and down front and rear adjustment</li></ul>
<b>Multi-function steering wheel</b>	<ul style="list-style-type: none"><li>•</li></ul>
<b>Heated Steering Wheel</b>	-
<b>Steering wheel memory</b>	-
<b>Trip computer display screen</b>	<ul style="list-style-type: none"><li>• Color</li></ul>
<b>Full LCD instrument panel</b>	-
<b>LCD instrument size</b>	<ul style="list-style-type: none"><li>• 8 inches</li></ul>
<b>Interior rearview mirror function</b>	<ul style="list-style-type: none"><li>• Manual anti-glare</li></ul>
<b>Gear shifting</b>	<ul style="list-style-type: none"><li>• Electronic gear shift</li></ul>

## Intelligent configuration

## Intelligent configuration (continued)

<b>Connected Car Services</b>	•
<b>OTA Updates</b>	•
<b>4G/5G Network</b>	•4G
<b>Mobile APP remote function</b>	• Door control; • Vehicle start; • Climate control; • Vehicle status check/diagnostics
<b>Wi-Fi hotspots</b>	•

## Driving Control

<b>Driving mode switch</b>	• Movement; • Economy
<b>Automatic parking</b>	•
<b>Steep slope descent</b>	•
<b>Hill start assist</b>	•

## Driving Hardware

<b>Front/rear parking radar</b>	Front-/Rear •
<b>Driving Assistance Camera System</b>	• Reversing image
<b>Number of cameras</b>	• 1
<b>Number of ultrasonic radars</b>	• 4

## In-car charging

<b>Multimedia/charging port</b>	•USB;•Type-C
<b>Number of USB/Type-C ports</b>	Front row 4 one Back row 1 one

---

"●" = Standard equipment

"-" = Not available

"○" = Optional equipment.

Note: These are Chinese market vehicles. Warranty coverage is not available outside of China.