

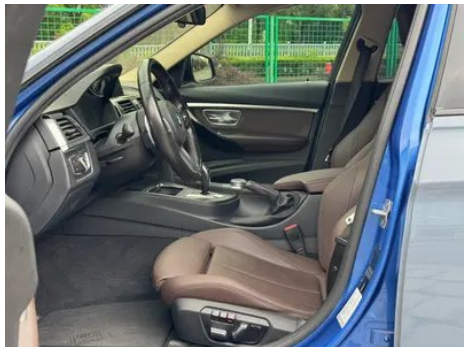
Vehicle Detail Report

BMW 3 Series 2019 320Li M Sports suit

Basic Information

Brand	BMW
Mileage	93,000 km
Color	Dark gray
First Registration	2019-02-01
Transfer Count	0

Vehicle Images





Vehicle Condition

1. Left rocker panel, Inner-side deformation, Outer-side deformation. 2. Inner side of left A-pillar, Deformation. 3. Right rear quarter panel, Paint repair, Body panel repair.

Configuration Information

Model Information

Model Information (continued)

Model Name	BMW 3 Series 2019 320Li M Sports suit
Launch Date	2018.09

Basic parameters

Vehicle Class	Mid-size car
Energy Type	Gasoline
Maximum Power (kW)	135
Maximum Torque (N·m)	270
Transmission	8-gear manual integration
Body Type	Sedan
Engine	2.0L 184 hp L4
Dimensions (L×W×H) (mm)	4760*1811*1455
Official 0-100 km/h Acceleration (s)	7.9
Top Speed (km/h)	235
Curb Weight (kg)	1615
Maximum Gross Weight (kg)	-
NEDC Combined Fuel Consumption (L/100km)	6.2

engine

Engine Model	B48B20C
Displacement (mL)	1998
Displacement (L)	2.0
Induction Type	Turbocharging
Cylinder Arrangement	L
Number of Cylinders	4
Valves per Cylinder	4
Valve Train	DOHC
Maximum Power (PS)	184
Max Power Speed (rpm)	5000-6500
Max Torque Speed (rpm)	1350-4600
Maximum net power (kW)	-
Fuel Grade	95.
Fuel Delivery System	Direct injection

engine (continued)

Cylinder Head Material	Aluminum alloy
Cylinder Block Material	Aluminum alloy

Screen/System

Central control color screen	<ul style="list-style-type: none">• Touch LCD screen
Infotainment Screen Size	<ul style="list-style-type: none">• 8.8 inches
Bluetooth/In-car Phone	<ul style="list-style-type: none">•
Smartphone Integration/Mirroring	<ul style="list-style-type: none">• Support CarPlay
Voice recognition control system	<ul style="list-style-type: none">• Multimedia system;• Navigation;• Telephone
In-car CD/DVD Player	<ul style="list-style-type: none">• Single disc CD

Body

Length (mm)	4760
Width (mm)	1811
Height (mm)	1455
Wheelbase (mm)	2920
Front Track (mm)	-
Rear Track (mm)	-
Door Opening Type	-
Number of Doors	4
Number of Seats	5
Fuel Tank Capacity (L)	60
Trunk volume (L)	480
Drag Coefficient (Cd)	-

Gearbox

Abbreviation	8-gear manual integration
Number of Gears	8
Transmission Type	Automatic Transmission with Manual Mode (AT)

Chassis steering

Drive Type	Front-engine, Rear-wheel drive (FR)
Front Suspension Type	Dual-ball-joint MacPherson independent suspension
Rear Suspension Type	Multi-link independent suspension
Power Steering Type	Electric power assistance

Chassis steering (continued)

Vehicle structure	bearing type
--------------------------	--------------

Seat Configuration

Seat Material	<input type="radio"/> Genuine leather (USD 1,838); • Faux leather
Main seat adjustment	• Front-to-back adjustment; • Backrest adjustment; • Height adjustment (4-way); • Leg rest adjustment; <input type="radio"/> Lumbar support (2- way)
Co-seat adjustment method	• Front-to-back adjustment; • Backrest adjustment; • Height adjustment (4-way); • Leg rest adjustment; <input type="radio"/> Lumbar support (2- way)
Electric adjustment of driver's seat and passenger seat	Main •/Deputy •
Front seat functions	<input type="radio"/> Heating
Electric seat memory function	• Driving position
Front passenger seat rear adjustable buttons	•
Rear seat folding	• Proportional down
Front/rear center armrest	Front •/Rear •
Rear cup holder	•
Sports style seats	•

Active safety

Anti-lock Braking System (ABS)	•
Electronic Brakeforce Distribution (EBD/CBC)	•
Brake Assist System (EBA/ BAS/BA)	•
Traction Control System (ASR/TCS/TRC)	•
Electronic Stability Control (ESC/ESP/DSC)	•
Tire Pressure Monitoring System (TPMS)	• Tire pressure alarm
Seat Belt Reminder	• Front row
ISOFIX Child Seat Anchors	•

Active safety (continued)

Lane Departure Warning System (LDWS)	○
Autonomous Emergency Braking (AEB)	○
Driver Fatigue Detection	•
Emergency Call System (eCall)	•

Air conditioning/refrigerator

Air conditioning temperature control method	• Automatic air conditioning
Rear Independent Climate Control	-
Rear seat air vents	•
Temperature zone control	•
Car air purifier	-
In-cabin PM2.5 Filter	-

Passive safety

Driver/passenger airbag	Main •/Deputy •
Front/rear side airbags	Front •/Rear-
Front/rear head airbags (curtain airbags)	Front •/Rear •
Run-flat tires	•
Passive pedestrian protection	○

Wheel brake

Front Brake Type	Ventilation disc
Rear Brake Type	Ventilation disc
Parking brake type	handbrake
Front Tire Size	225/45 R18
Rear Tire Size	255/40 R18
Spare Tire Size	None

Audio/Interior Lighting

Speaker Brand Name	○ Harman/Kardon Harman Kardon
Number of speakers	○ ≥ 12 horns; • 10-11 horns
Interior ambient lighting	• Two colors

Driving functions

Driving functions (continued)

Navigation traffic information display	•
Lane assist	-
Lane Keeping Assist System	-
Cruise control system	• Cruise control; ○ Adaptive cruise control (USD 1,059)
Satellite navigation system	•
Parking Assist	○

Exterior lighting

Low beam light source	•LED
High beam light source	•LED
LED daytime running lights	•
Adaptive high and low beam	-
Automatic headlights	•
Front fog lights	•LED
Height-adjustable headlights	•
Headlight Delay Off	•

Exterior mirrors

Exterior mirror function	• Electric adjustment; • Electric folding; • Rearview mirror memory; • Rearview mirror heating; • Automatic downturning when reversing; • Automatic folding when locked; ○ Automatic anti-glare
---------------------------------	---

Appearance/anti-theft

Rim material	• Aluminum alloy
Electric trunk	-
Electronic engine immobilizer	•
Central locking system in the car	•
Key Type	• Remote key
Keyless start system	•
Keyless entry function	○ Front row
Appearance Kit	• Sports style

Appearance/anti-theft (continued)

Hands-free Trunk	○
-------------------------	---

Skylight/Glass

Sunroof Type	• Electric sunroof
Front/rear electric windows	Front •/Rear •
One-touch window lifting function	• Full car
Window anti-pinch function	•
Car makeup mirror	• Driver's side ambient light; • Passenger-side ambient light; • Rear-row ambient light
Rear wiper	-
Rain sensor wiper function	• Rainfall-sensing
Rear side window sunshades	• Manual

Interior and exterior color

Exterior Color	Esto Blue: #1559AC; Gem Turquoise: #242224; Melbourne Red: #610303; Snow Mountain White: #FAFAFA; Cedar Gray: #909090
Interior Color	Black: #000000; Black/Mocha: #000000/#423534; Black/Veneto Beige: #000000/#CDB589; Black/Brandy: #000000/#78593D; Black/Coral Red: #000000/#9E2F35

Steering wheel/interior mirror

Steering Wheel Material	• Leather
Steering wheel position adjustment	• Manual up and down front and rear adjustment
Multi-function steering wheel	•
Heated Steering Wheel	○
Steering wheel memory	-
Trip computer display screen	• Color
Full LCD instrument panel	•
Interior rearview mirror function	• Automatic anti-glare

Steering wheel/interior mirror (continued)

HUD Head Up Digital Display	○
Steering Wheel Shift Paddles	•

Intelligent configuration

Connected Car Services	•
OTA Updates	-

Driving Control

Driving mode switch	• Sport; • Economy; • Standard/Comfort
Automatic parking	-
Hill start assist	•
Engine start-stop technology	•

Driving Hardware

Front/rear parking radar	Front •/Rear •
Driving Assistance Camera System	• Reversing image; ○ 360-degree panoramic image

In-car charging

Multimedia/charging port	•USB
Number of USB/Type-C ports	• 1 in the front row
Mobile phone wireless charging function	○ Front row

"●" = Standard equipment

"-" = Not available

"○" = Optional equipment.

Note: These are Chinese market vehicles. Warranty coverage is not available outside of China.