

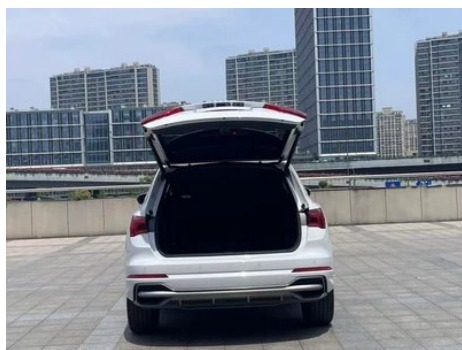
# Vehicle Detail Report

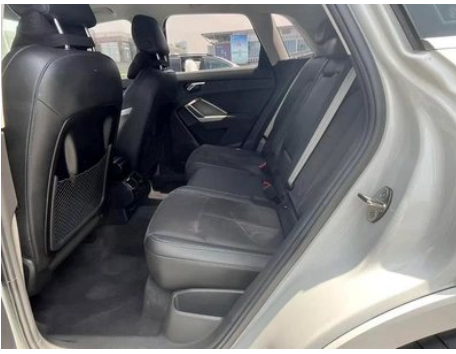
## Audi Q3 2023 35 TFSI Fashion dynamic type (1.5T)

### Basic Information

Brand	Audi
Mileage	34,000 km
Color	White
First Registration	2023-08-01
Transfer Count	0

### Vehicle Images





## Vehicle Condition

1. Original metal panels and factory paint.

## Configuration Information

### Model Information

<b>Model Name</b>	Audi Q3 2023 35 TFSI Fashion dynamic type (1.5T)
<b>Launch Date</b>	2023.05

### Basic parameters

<b>Vehicle Class</b>	Compact SUV
<b>Energy Type</b>	Gasoline
<b>Maximum Power (kW)</b>	118
<b>Maximum Torque (N·m)</b>	250

## Basic parameters (continued)

<b>Transmission</b>	7-speed wet dual-clutch
<b>Body Type</b>	SUV
<b>Engine</b>	1.5T 160 horsepower L4
<b>Dimensions (L×W×H) (mm)</b>	4495*1848*1616
<b>Official 0-100 km/h Acceleration (s)</b>	9.6
<b>Top Speed (km/h)</b>	200
<b>Curb Weight (kg)</b>	1600
<b>Maximum Gross Weight (kg)</b>	2090
<b>WLTP Combined Fuel Consumption (L/100km)</b>	6.74

## engine

<b>Engine Model</b>	DSV
<b>Displacement (mL)</b>	1498
<b>Displacement (L)</b>	1.5
<b>Induction Type</b>	Turbocharging
<b>Cylinder Arrangement</b>	L
<b>Number of Cylinders</b>	4
<b>Valves per Cylinder</b>	4
<b>Valve Train</b>	DOHC
<b>Maximum Power (PS)</b>	160
<b>Max Power Speed (rpm)</b>	5000-6000
<b>Max Torque Speed (rpm)</b>	1750-3000
<b>Maximum net power (kW)</b>	118
<b>Fuel Grade</b>	95.
<b>Fuel Delivery System</b>	Direct injection
<b>Cylinder Head Material</b>	Aluminum alloy
<b>Cylinder Block Material</b>	Aluminum alloy
<b>Engine layout</b>	Horizontal

## Screen/System

<b>Central control color screen</b>	<ul style="list-style-type: none"><li>• Touch LCD screen</li></ul>
<b>Infotainment Screen Size</b>	<ul style="list-style-type: none"><li>• 10.1 inches</li></ul>
<b>Bluetooth/In-car Phone</b>	<ul style="list-style-type: none"><li>•</li></ul>

## Screen/System (continued)

<b>Smartphone Integration/Mirroring</b>	• Support CarPlay; • Support CarLife; • Support Android Auto
<b>Voice recognition control system</b>	○ Multimedia system; ○ Navigation; ○ Telephone

## Body

<b>Length (mm)</b>	4495
<b>Width (mm)</b>	1848
<b>Height (mm)</b>	1616
<b>Wheelbase (mm)</b>	2680
<b>Front Track (mm)</b>	1578
<b>Rear Track (mm)</b>	1570
<b>Ground Clearance (Fully Loaded) (mm)</b>	152
<b>Door Opening Type</b>	swing door
<b>Number of Doors</b>	5
<b>Number of Seats</b>	5
<b>Fuel Tank Capacity (L)</b>	60
<b>Trunk volume (L)</b>	450
<b>Drag Coefficient (Cd)</b>	-
<b>Approach Angle (°)</b>	17
<b>Departure Angle (°)</b>	22
<b>Minimum Turning Radius (m)</b>	6

## Gearbox

<b>Abbreviation</b>	7-speed wet dual-clutch
<b>Number of Gears</b>	7
<b>Transmission Type</b>	Wet Dual-Clutch Transmission (DCT)

## Chassis steering

<b>Drive Type</b>	Front-engine, Front-wheel drive (FF)
<b>Front Suspension Type</b>	MacPherson independent suspension
<b>Rear Suspension Type</b>	Multi-link independent suspension
<b>Power Steering Type</b>	Electric power assistance
<b>Vehicle structure</b>	bearing type

## Seat Configuration

<b>Seat Material</b>	• Leather/Alcantara Mix
----------------------	-------------------------

## Seat Configuration (continued)

<b>Main seat adjustment</b>	<ul style="list-style-type: none"><li>• Front and rear adjustment;</li><li>• Backrest adjustment;</li><li>• Height adjustment (4-way);</li><li>• Leg rest adjustment;</li><li>• Lumbar support (4-way)</li></ul>
<b>Co-seat adjustment method</b>	<ul style="list-style-type: none"><li>• Front and rear adjustment;</li><li>• Backrest adjustment;</li><li>• Height adjustment (4-way);</li><li>• Leg rest adjustment;</li><li>• Lumbar support (4-way)</li></ul>
<b>Electric adjustment of driver's seat and passenger seat</b>	Main •/Deputy •
<b>Front seat functions</b>	○ Heating (USD 368)
<b>Front passenger seat rear adjustable buttons</b>	-
<b>Second row seat adjustment</b>	<ul style="list-style-type: none"><li>• Front and rear adjustment;</li><li>• Backrest adjustment</li></ul>
<b>Rear seat folding</b>	<ul style="list-style-type: none"><li>• Proportional down</li></ul>
<b>Front/rear center armrest</b>	Front •/Rear •
<b>Rear cup holder</b>	<ul style="list-style-type: none"><li>•</li></ul>
<b>Sports style seats</b>	<ul style="list-style-type: none"><li>•</li></ul>

## Active safety

<b>Anti-lock Braking System (ABS)</b>	<ul style="list-style-type: none"><li>•</li></ul>
<b>Electronic Brakeforce Distribution (EBD/CBC)</b>	<ul style="list-style-type: none"><li>•</li></ul>
<b>Brake Assist System (EBA/BAS/BA)</b>	<ul style="list-style-type: none"><li>•</li></ul>
<b>Traction Control System (ASR/TCS/TRC)</b>	<ul style="list-style-type: none"><li>•</li></ul>
<b>Electronic Stability Control (ESC/ESP/DSC)</b>	<ul style="list-style-type: none"><li>•</li></ul>
<b>Tire Pressure Monitoring System (TPMS)</b>	<ul style="list-style-type: none"><li>• Tire pressure alarm</li></ul>
<b>Seat Belt Reminder</b>	<ul style="list-style-type: none"><li>• Full car</li></ul>
<b>ISOFIX Child Seat Anchors</b>	<ul style="list-style-type: none"><li>•</li></ul>
<b>Lane Departure Warning System (LDWS)</b>	○
<b>Autonomous Emergency Braking (AEB)</b>	<ul style="list-style-type: none"><li>•</li></ul>
<b>Driver Fatigue Detection</b>	<ul style="list-style-type: none"><li>•</li></ul>

## Active safety (continued)

<b>Forward Collision Warning (FCW)</b>	•
<b>Emergency Call System (eCall)</b>	○

## Air conditioning/refrigerator

<b>Air conditioning temperature control method</b>	• Automatic air conditioning
<b>Rear Independent Climate Control</b>	•
<b>Rear seat air vents</b>	•
<b>Temperature zone control</b>	•
<b>Car air purifier</b>	-
<b>In-cabin PM2.5 Filter</b>	-

## Passive safety

<b>Driver/passenger airbag</b>	Main •/Deputy •
<b>Front/rear side airbags</b>	Front •/Rear-
<b>Front/rear head airbags (curtain airbags)</b>	Front •/Rear •

## Wheel brake

<b>Front Brake Type</b>	Ventilation disc
<b>Rear Brake Type</b>	Disc
<b>Parking brake type</b>	Electronic Parking
<b>Front Tire Size</b>	235/50 R19
<b>Rear Tire Size</b>	235/50 R19
<b>Spare Tire Size</b>	Not full-size

## Audio/Interior Lighting

<b>Speaker Brand Name</b>	○SONOS(USD 1,250)
<b>Number of speakers</b>	○ ≥ 12 horns; • 10-11 horns
<b>Interior ambient lighting</b>	• Monochrome; ○ 30 colors (USD 368)
<b>Touch reading light</b>	•

## Driving functions

<b>Navigation traffic information display</b>	○
<b>Lane assist</b>	○(USD 515)
<b>Lane Keeping Assist System</b>	○(USD 809)

## Driving functions (continued)

<b>Cruise control system</b>	• Constant speed cruise; ○ Full speed adaptive cruise (USD 1,912)
<b>Satellite navigation system</b>	○
<b>Driving assistance level</b>	○L2
<b>Rear Cross Traffic Alert</b>	○
<b>Parking Assist</b>	•

## Exterior lighting

<b>Low beam light source</b>	•LED
<b>High beam light source</b>	•LED
<b>LED daytime running lights</b>	•
<b>Adaptive high and low beam</b>	-
<b>Automatic headlights</b>	•
<b>Height-adjustable headlights</b>	•
<b>Headlight Delay Off</b>	•
<b>Lighting features</b>	○ Matrix (USD 735)
<b>Headlight rain and fog mode</b>	•
<b>Headlight cleaning device</b>	○(USD 74)

## Exterior mirrors

<b>Exterior mirror function</b>	• Electric adjustment; • Electric folding; • Heated mirrors; • Automatic down-folding upon reversing; • Automatic folding when the car is locked; ○ Auto-dimming (USD 147)
---------------------------------	--

## Appearance/anti-theft

<b>Rim material</b>	• Aluminum alloy
<b>Electric trunk</b>	•
<b>Electronic engine immobilizer</b>	•
<b>Central locking system in the car</b>	•
<b>Key Type</b>	• Remote key
<b>Keyless start system</b>	•
<b>Keyless entry function</b>	• Front row

## Appearance/anti-theft (continued)

<b>Appearance Kit</b>	• Sports style
<b>Electric trunk position memory</b>	•
<b>Roof rack</b>	•

## Skylight/Glass

<b>Sunroof Type</b>	• Openable panoramic sunroof
<b>Front/rear electric windows</b>	Front •/Rear •
<b>One-touch window lifting function</b>	• Full car
<b>Window anti-pinch function</b>	•
<b>Car makeup mirror</b>	• Main driver's lamp; • co-pilot's lamp
<b>Rear wiper</b>	•
<b>Rain sensor wiper function</b>	• Rainfall-sensing

## Interior and exterior color

<b>Exterior Color</b>	Sky Cloud Grey:#646464, Glacier White:#F6F6F6, Crocodile Green:#A0B4A0; Tango Red:#9B1014; Sepang Blue:#2846BE
<b>Interior Color</b>	Black, Grey:#000000/#8D8F8E, Black, Red, #000000/#A00A0A

## Steering wheel/interior mirror

<b>Steering Wheel Material</b>	• Leather
<b>Steering wheel position adjustment</b>	• Manual up and down front and rear adjustment
<b>Multi-function steering wheel</b>	•
<b>Heated Steering Wheel</b>	○(USD 0)
<b>Steering wheel memory</b>	-
<b>Trip computer display screen</b>	• Color
<b>Full LCD instrument panel</b>	•
<b>LCD instrument size</b>	• 12.3 inches
<b>Interior rearview mirror function</b>	• Automatic anti-glare
<b>Gear shifting</b>	• Mechanical gear shift

## Steering wheel/interior mirror (continued)

<b>ETC Device</b>	○(USD 74)
<b>Steering Wheel Shift Paddles</b>	•

## Intelligent configuration

<b>Connected Car Services</b>	○
<b>OTA Updates</b>	-
<b>4G/5G Network</b>	○4G
<b>Mobile APP remote function</b>	• Door control; • Vehicle condition inquiry/diagnosis

## Driving Control

<b>Driving mode switch</b>	• Sport; ○ Standard/Comfort (USD 294)
<b>Automatic parking</b>	•
<b>Hill start assist</b>	•
<b>Engine start-stop technology</b>	•

## Driving Hardware

<b>Front/rear parking radar</b>	Front •/Rear •
<b>Driving Assistance Camera System</b>	• Reversing image; ○ 360-degree panoramic image (USD 735)

## In-car charging

<b>Multimedia/charging port</b>	○SD;•Type-C
<b>Number of USB/Type-C ports</b>	• 2 in the front row/2 in the back row
<b>Luggage compartment 12V power socket</b>	•

## Optional Package

<b>Optional Package</b>	Matrix LED Headlight Package, 2 (5000 yuan; Including: matrix LED headlights, LED taillights), Matrix LED Headlight Package (6000 yuan; Including: matrix headlights, LED headlights, headlight range control, LED taillights with dynamic steering, headlight cleaning device.)
-------------------------	--

---

"●" = Standard equipment

"□" = Not available

"○" = Optional equipment.

Note: These are Chinese market vehicles. Warranty coverage is not available outside of China.