

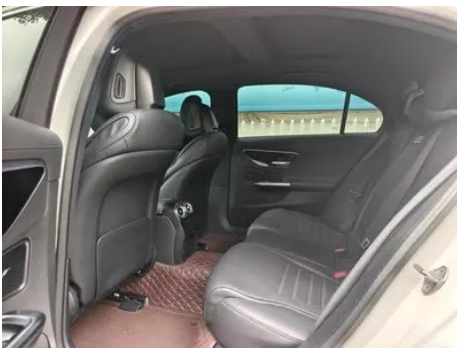
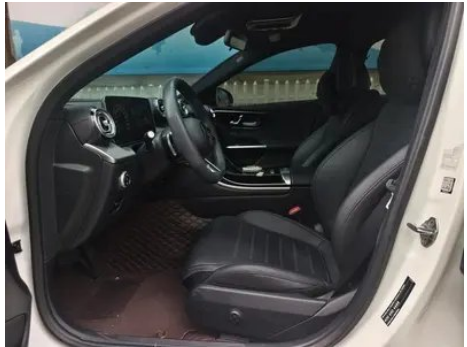
Vehicle Detail Report

Mercedes-Benz C-Class 2024 C 260 L Sports version

Basic Information

| | |
|--------------------|---------------|
| Brand | Mercedes-Benz |
| Mileage | 39,000 km |
| Color | White |
| First Registration | 2023-12-01 |
| Transfer Count | 0 |

Vehicle Images





Vehicle Condition

1. Driver's seat rails and frame, Signs of removal. 2. Front passenger seat rails and frame, Signs of removal. 3. Right rear quarter panel, Paint chip, Deformation, Paint repair, Body panel repair.

Configuration Information

Model Information

| | |
|--------------------|---|
| Model Name | Mercedes-Benz C-Class 2024 C 260 L Sports version |
| Launch Date | 2023.10 |

Basic parameters

| | |
|---|-----------------------------------|
| Vehicle Class | Mid-size car |
| Energy Type | Gasoline + 48V Mild Hybrid System |
| Maximum Power (kW) | 150 |
| Maximum Torque (N·m) | 300 |
| Transmission | 9-gear manual integration |
| Body Type | Sedan |
| Engine | 1.5L 204 hp L4 |
| Dimensions (L×W×H) (mm) | 4882*1820*1461 |
| Official 0-100 km/h Acceleration (s) | 7.8 |
| Top Speed (km/h) | 236 |
| Curb Weight (kg) | 1760 |
| Maximum Gross Weight (kg) | 2260 |

Basic parameters (continued)

| | |
|---|------|
| WLTP Combined Fuel Consumption (L/100km) | 6.45 |
|---|------|

engine

| | |
|--------------------------------|------------------|
| Engine Model | 254 915 |
| Displacement (mL) | 1496 |
| Displacement (L) | 1.5 |
| Induction Type | Turbocharging |
| Cylinder Arrangement | L |
| Number of Cylinders | 4 |
| Valves per Cylinder | 4 |
| Valve Train | DOHC |
| Maximum Power (PS) | 204 |
| Max Power Speed (rpm) | 6100 |
| Max Torque Speed (rpm) | 1800-4000 |
| Maximum net power (kW) | 150 |
| Fuel Grade | 95. |
| Fuel Delivery System | Direct injection |
| Cylinder Head Material | Aluminum alloy |
| Cylinder Block Material | Aluminum alloy |
| Engine layout | Longitudinal |

Screen/System

| | |
|--|--|
| Central control color screen | <ul style="list-style-type: none">• Touch LCD screen |
| Infotainment Screen Size | <ul style="list-style-type: none">• 11.9 inches |
| Bluetooth/In-car Phone | <ul style="list-style-type: none">• |
| Smartphone Integration/Mirroring | <ul style="list-style-type: none">• Support CarPlay;• Support Android Auto |
| Voice recognition control system | <ul style="list-style-type: none">• Multimedia system;• Navigation;• Telephone;• Air conditioning |
| Voice wake-up recognition by region | <ul style="list-style-type: none">• Dual Zone |
| In-vehicle intelligent system | <ul style="list-style-type: none">• MBUX |
| Voice wake-up word-free | <ul style="list-style-type: none">• |
| Continuous speech recognition | <ul style="list-style-type: none">• |

Body

Body (continued)

| | |
|-------------------------------|------------|
| Length (mm) | 4882 |
| Width (mm) | 1820 |
| Height (mm) | 1461 |
| Wheelbase (mm) | 2954 |
| Front Track (mm) | 1589 |
| Rear Track (mm) | 1563 |
| Door Opening Type | swing door |
| Number of Doors | 4 |
| Number of Seats | 5 |
| Fuel Tank Capacity (L) | 66 |
| Trunk volume (L) | 455 |
| Drag Coefficient (Cd) | - |
| Approach Angle (°) | 15 |
| Departure Angle (°) | 18 |

Gearbox

| | |
|--------------------------|--|
| Abbreviation | 9-gear manual integration |
| Number of Gears | 9 |
| Transmission Type | Automatic Transmission with Manual Mode (AT) |

Chassis steering

| | |
|------------------------------|-------------------------------------|
| Drive Type | Front-engine, Rear-wheel drive (FR) |
| Front Suspension Type | Multi-link independent suspension |
| Rear Suspension Type | Multi-link independent suspension |
| Power Steering Type | Electric power assistance |
| Vehicle structure | bearing type |

Seat Configuration

| | |
|----------------------------------|--|
| Seat Material | ○ Leather (USD 1,618); • Imitation leather |
| Main seat adjustment | • Front and rear adjustment; • Backrest adjustment; • Height adjustment (4-way); • Leg rest adjustment; • Lumbar support (4-way) |
| Co-seat adjustment method | • Front and rear adjustment; • Backrest adjustment; • Height adjustment (4-way); • Leg rest adjustment; • Lumbar support (4-way) |

Seat Configuration (continued)

| | |
|--|---|
| Electric adjustment of driver's seat and passenger seat | Main •/Deputy • |
| Front seat functions | ○ Heating (USD 441);○ Ventilation (USD 1,441) |
| Electric seat memory function | ○ Driving position (USD 441) |
| Front passenger seat rear adjustable buttons | • |
| Front/rear center armrest | Front •/Rear • |
| Rear cup holder | • |
| Second row seat functions | ○ Heating (USD 441) |
| Sports style seats | • |

Active safety

| | |
|---|-------------------------|
| Anti-lock Braking System (ABS) | • |
| Electronic Brakeforce Distribution (EBD/CBC) | • |
| Brake Assist System (EBA/BAS/BA) | • |
| Traction Control System (ASR/TCS/TRC) | • |
| Electronic Stability Control (ESC/ESP/DSC) | • |
| Tire Pressure Monitoring System (TPMS) | • Tire pressure display |
| Seat Belt Reminder | • Full car |
| ISOFIX Child Seat Anchors | • |
| Lane Departure Warning System (LDWS) | • |
| Autonomous Emergency Braking (AEB) | • |
| Driver Fatigue Detection | • |
| Forward Collision Warning (FCW) | • |
| Emergency Call System (eCall) | • |
| Built-in Dashcam | • |

Air conditioning/refrigerator

Air conditioning/refrigerator (continued)

| | |
|--|------------------------------|
| Air conditioning temperature control method | • Automatic air conditioning |
| Rear Independent Climate Control | - |
| Rear seat air vents | • |
| Temperature zone control | • |
| Car air purifier | • |
| In-cabin PM2.5 Filter | • |
| Negative ion generator | ○ |
| Car fragrance device | ○ |

Passive safety

| | |
|--|---------------------------|
| Driver/passenger airbag | Main •/Deputy • |
| Front/rear side airbags | Front •/Rear- |
| Front/rear head airbags (curtain airbags) | Front •/Rear • |
| Knee airbag | • Main driver knee airbag |
| Passive pedestrian protection | • |

Wheel brake

| | |
|---------------------------|--------------------|
| Front Brake Type | Ventilation disc |
| Rear Brake Type | Ventilation disc |
| Parking brake type | Electronic Parking |
| Front Tire Size | 225/45 R18 |
| Rear Tire Size | 255/40 R18 |
| Spare Tire Size | None |

Audio/Interior Lighting

| | |
|----------------------------------|-------------------------------------|
| Speaker Brand Name | ○Burmester Berlin Sound (USD 1,174) |
| Number of speakers | • 5 horns; ○ 15 horns |
| Interior ambient lighting | • 64 colors |

Driving functions

| | |
|---|---|
| Navigation traffic information display | • |
| Lane assist | ○ |
| Lane Keeping Assist System | • |

Driving functions (continued)

| | |
|--------------------------------------|------------------------------|
| Cruise control system | • Full speed adaptive cruise |
| Satellite navigation system | • |
| Driving assistance level | •L2 |
| Lane centering | ○ |
| Road traffic sign recognition | ○ |
| Map Brand | • Gaud |
| AR real-time navigation | ○(USD 441) |
| Parking Assist | • |
| Lane Change Assist | ○ |

Exterior lighting

| | |
|-------------------------------------|--------------------------|
| Low beam light source | •LED |
| High beam light source | •LED |
| LED daytime running lights | • |
| Adaptive high and low beam | • |
| Automatic headlights | • |
| Height-adjustable headlights | • |
| Headlight Delay Off | • |
| Lighting features | ○ Pixel type (USD 2,353) |
| Turn headlights | ○ |

Exterior mirrors

| | |
|---------------------------------|---|
| Exterior mirror function | • Electric adjustment; • Electric folding; • Rearview mirror heating; ○ Automatically turn down when reversing; • Automatically fold when locking the car; ○ Automatic anti-glare |
|---------------------------------|---|

Appearance/anti-theft

| | |
|--|------------------|
| Rim material | • Aluminum alloy |
| Electric trunk | ○(USD 382) |
| Electronic engine immobilizer | • |
| Central locking system in the car | • |
| Key Type | • Remote key |

Appearance/anti-theft (continued)

| | |
|-------------------------------|------------------------|
| Keyless start system | • |
| Keyless entry function | ○ Full car (USD 1,103) |
| Appearance Kit | • Sports style |
| Hands-free Trunk | ○ |
| Remote start function | • |

Skylight/Glass

| | |
|--|---|
| Sunroof Type | • Sectional electric sunroof |
| Front/rear electric windows | Front •/Rear • |
| One-touch window lifting function | • Full car |
| Window anti-pinch function | • |
| Car makeup mirror | • Main driver's lamp; • co-pilot's lamp |
| Rear wiper | - |
| Rain sensor wiper function | • Rainfall-sensing |

Interior and exterior color

| | |
|-----------------------|--|
| Exterior Color | Arctic white:#F4F4F4; Fritillaria white:#E6E6E6; Graphite gray:#4E5158; Turquoise green:#193A48; Sea night blue:#143882; Lava red:#B52E39; Time and space silver:#ACACAE; Obsidian black:#000000 |
| Interior Color | Black:#000000; Black/Ochre Brown:#000000/#773B34; Black/Flaming Red:#000000/#621C27; Black/Macchiato Beige:#000000/#D4D0CF; Black/Titanium Grey:#000000/#2C2D31 |

Steering wheel/interior mirror

| | |
|---|--|
| Steering Wheel Material | • Leather |
| Steering wheel position adjustment | • Manual up and down front and rear adjustment |
| Multi-function steering wheel | • |
| Heated Steering Wheel | - |
| Steering wheel memory | - |
| Trip computer display screen | • Color |

Steering wheel/interior mirror (continued)

| | |
|--|---|
| Full LCD instrument panel | <ul style="list-style-type: none">• |
| LCD instrument size | <ul style="list-style-type: none">• 12.3 inches |
| Interior rearview mirror function | <ul style="list-style-type: none">• Manual anti-glare; ○ Automatic anti-glare |
| Gear shifting | <ul style="list-style-type: none">• Electronic gear shift |
| HUD Head Up Digital Display | ○(USD 1,324) |
| ETC Device | ○(USD 441) |
| Steering Wheel Shift Paddles | <ul style="list-style-type: none">• |

Intelligent configuration

| | |
|-----------------------------------|--|
| Connected Car Services | <ul style="list-style-type: none">• |
| OTA Updates | <ul style="list-style-type: none">• |
| 4G/5G Network | <ul style="list-style-type: none">•4G |
| Mobile APP remote function | <ul style="list-style-type: none">• Door control;• Vehicle start-up;• Vehicle condition inquiry/diagnosis;• Vehicle location/vehicle search |

Driving Control

| | |
|-------------------------------------|--|
| Driving mode switch | <ul style="list-style-type: none">• Sport;• Economy;• Standard/Comfort |
| Automatic parking | <ul style="list-style-type: none">• |
| Hill start assist | <ul style="list-style-type: none">• |
| Energy recovery system | <ul style="list-style-type: none">• |
| Variable steering ratio | <ul style="list-style-type: none">• |
| Engine start-stop technology | <ul style="list-style-type: none">• |

Driving Hardware

| | |
|---|---|
| Front/rear parking radar | Front •/Rear • |
| Driving Assistance Camera System | <ul style="list-style-type: none">• Reversing image |

In-car charging

| | |
|--|--|
| Multimedia/charging port | <ul style="list-style-type: none">•Type-C |
| Number of USB/Type-C ports | <ul style="list-style-type: none">• 3 in the front row/2 in the back row;○ 4 in the front row/2 in the back row (USD 397) |
| Mobile phone wireless charging function | <ul style="list-style-type: none">• Front row |

Optional Package

Optional Package (continued)

| Optional Package | |
|------------------|--|
| | Zhilian package (USD 441; Including: MBUX intelligent human-computer interaction system real-life navigation, MBUX intelligent human-computer interaction system (upgraded version)); Smart package (USD 585; Including: MBUX intelligent human-computer interaction system (upgraded version), in-car air conditioning components, and refreshing function); Zhile package (USD 1,174; Including: Burmester 3D surround stereo sound system and personalized sound effect settings); smart driving package (USD 2,912; Including: rearview mirror component, driver assistance component enhanced version, preventive safety system (PRE-SAFE)) |

"●" = Standard equipment

"-" = Not available

"○" = Optional equipment.

Note: These are Chinese market vehicles. Warranty coverage is not available outside of China.