

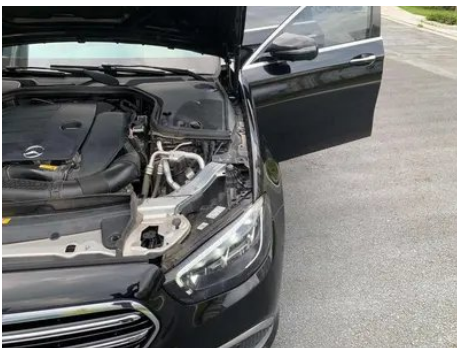
# Vehicle Detail Report

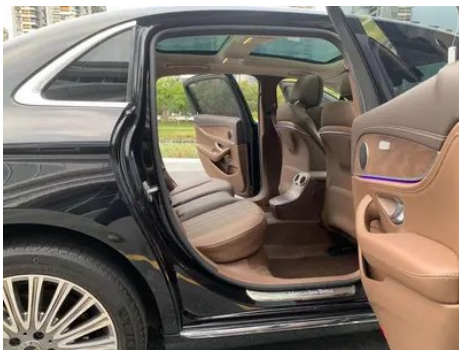
Mercedes-Benz E-Class 2023 Restyling E 300 L  
Fashionable Passenger car

## Basic Information

Brand	Mercedes-Benz
Mileage	32,000 km
Color	Black
First Registration	2023-07-01
Transfer Count	0

## Vehicle Images







## Vehicle Condition

1. Driver's seat rails and frame, Signs of removal. 2. Front passenger seat rails and frame, Signs of removal.

## Configuration Information

### Model Information

<b>Model Name</b>	Mercedes-Benz E-Class 2023 Restyling E 300 L Fashionable
<b>Launch Date</b>	2023.03

### Basic parameters

<b>Vehicle Class</b>	Mid-size and large cars
<b>Energy Type</b>	Gasoline
<b>Maximum Power (kW)</b>	190
<b>Maximum Torque (N·m)</b>	370
<b>Transmission</b>	9-gear manual integration
<b>Body Type</b>	Sedan
<b>Engine</b>	2.0T 258 horsepower L4
<b>Dimensions (L×W×H) (mm)</b>	5078*1860*1480
<b>Official 0-100 km/h Acceleration (s)</b>	6.9
<b>Top Speed (km/h)</b>	240
<b>Curb Weight (kg)</b>	1800
<b>Maximum Gross Weight (kg)</b>	2350
<b>WLTP Combined Fuel Consumption (L/100km)</b>	7.75

### engine

<b>Engine Model</b>	264 920
<b>Displacement (mL)</b>	1991
<b>Displacement (L)</b>	2.0
<b>Induction Type</b>	Turbocharging
<b>Cylinder Arrangement</b>	L

## engine (continued)

<b>Number of Cylinders</b>	4
<b>Valves per Cylinder</b>	4
<b>Valve Train</b>	DOHC
<b>Maximum Power (PS)</b>	258
<b>Max Power Speed (rpm)</b>	6100
<b>Max Torque Speed (rpm)</b>	1800-4000
<b>Maximum net power (kW)</b>	190
<b>Fuel Grade</b>	95.
<b>Fuel Delivery System</b>	Direct injection
<b>Cylinder Head Material</b>	Aluminum alloy
<b>Cylinder Block Material</b>	Aluminum alloy
<b>Engine layout</b>	Longitudinal

## Screen/System

<b>Central control color screen</b>	<ul style="list-style-type: none"><li>• Touch LCD screen</li></ul>
<b>Infotainment Screen Size</b>	<ul style="list-style-type: none"><li>• 12.3 inches</li></ul>
<b>Bluetooth/In-car Phone</b>	<ul style="list-style-type: none"><li>•</li></ul>
<b>Smartphone Integration/ Mirroring</b>	<ul style="list-style-type: none"><li>• Support CarPlay;</li><li>• Support CarLife</li></ul>
<b>Voice recognition control system</b>	<ul style="list-style-type: none"><li>• Multimedia system;</li><li>• Navigation;</li><li>• Telephone;</li><li>• Air conditioning</li></ul>
<b>In-vehicle intelligent system</b>	<ul style="list-style-type: none"><li>• MBUX</li></ul>
<b>Gesture Control</b>	○(USD 676)

## Body

<b>Length (mm)</b>	5078
<b>Width (mm)</b>	1860
<b>Height (mm)</b>	1480
<b>Wheelbase (mm)</b>	3079
<b>Front Track (mm)</b>	1596
<b>Rear Track (mm)</b>	1600
<b>Door Opening Type</b>	swing door
<b>Number of Doors</b>	4
<b>Number of Seats</b>	5
<b>Fuel Tank Capacity (L)</b>	66

## Body (continued)

<b>Trunk volume (L)</b>	-
<b>Drag Coefficient (Cd)</b>	-
<b>Approach Angle (°)</b>	18
<b>Departure Angle (°)</b>	17

## Gearbox

<b>Abbreviation</b>	9-gear manual integration
<b>Number of Gears</b>	9
<b>Transmission Type</b>	Automatic Transmission with Manual Mode (AT)

## Chassis steering

<b>Drive Type</b>	Front-engine, Rear-wheel drive (FR)
<b>Front Suspension Type</b>	Multi-link independent suspension
<b>Rear Suspension Type</b>	Multi-link independent suspension
<b>Power Steering Type</b>	Electric power assistance
<b>Vehicle structure</b>	bearing type

## Seat Configuration

<b>Seat Material</b>	<input type="radio"/> Genuine leather; <input type="checkbox"/> Imitation leather
<b>Main seat adjustment</b>	<ul style="list-style-type: none"><li>• Front and rear adjustment;</li><li>• Backrest adjustment;</li><li>• Height adjustment (4-way);</li><li>• Leg rest adjustment;</li><li>• Lumbar support (4-way)</li></ul>
<b>Co-seat adjustment method</b>	<ul style="list-style-type: none"><li>• Front and rear adjustment;</li><li>• Backrest adjustment;</li><li>• Height adjustment (4-way);</li><li>• Leg rest adjustment;</li><li>• Lumbar support (4-way)</li></ul>
<b>Electric adjustment of driver's seat and passenger seat</b>	Main <input type="checkbox"/> /Deputy <input type="checkbox"/>
<b>Front seat functions</b>	<ul style="list-style-type: none"><li>• Heating;</li><li><input type="radio"/> Ventilation</li></ul>
<b>Electric seat memory function</b>	<ul style="list-style-type: none"><li>• driving position;</li><li>• co-pilot position</li></ul>
<b>Front passenger seat rear adjustable buttons</b>	<ul style="list-style-type: none"><li>•</li></ul>
<b>Front/rear center armrest</b>	Front <input type="checkbox"/> /Rear <input type="checkbox"/>
<b>Rear cup holder</b>	<ul style="list-style-type: none"><li>•</li></ul>
<b>Second row seat functions</b>	<input type="radio"/> Heating

## Active safety

## Active safety (continued)

<b>Anti-lock Braking System (ABS)</b>	•
<b>Electronic Brakeforce Distribution (EBD/CBC)</b>	•
<b>Brake Assist System (EBA/BAS/BA)</b>	•
<b>Traction Control System (ASR/TCS/TRC)</b>	•
<b>Electronic Stability Control (ESC/ESP/DSC)</b>	•
<b>Tire Pressure Monitoring System (TPMS)</b>	• Tire pressure display
<b>Seat Belt Reminder</b>	• Full car
<b>ISOFIX Child Seat Anchors</b>	•
<b>Lane Departure Warning System (LDWS)</b>	○
<b>Autonomous Emergency Braking (AEB)</b>	•
<b>Driver Fatigue Detection</b>	•
<b>Forward Collision Warning (FCW)</b>	•
<b>Emergency Call System (eCall)</b>	•
<b>Built-in Dashcam</b>	○

## Air conditioning/refrigerator

<b>Air conditioning temperature control method</b>	• Automatic air conditioning
<b>Rear Independent Climate Control</b>	-
<b>Rear seat air vents</b>	•
<b>Temperature zone control</b>	•
<b>Car air purifier</b>	•
<b>In-cabin PM2.5 Filter</b>	•
<b>Negative ion generator</b>	○
<b>Car fragrance device</b>	○

## Passive safety

<b>Driver/passenger airbag</b>	Main •/Deputy •
<b>Front/rear side airbags</b>	Front •/Rear-

## Passive safety (continued)

<b>Front/rear head airbags (curtain airbags)</b>	Front •/Rear •
<b>Run-flat tires</b>	○
<b>Passive pedestrian protection</b>	•

## Wheel brake

<b>Front Brake Type</b>	Ventilation disc
<b>Rear Brake Type</b>	Ventilation disc
<b>Parking brake type</b>	Electronic Parking
<b>Front Tire Size</b>	245/45 R18
<b>Rear Tire Size</b>	245/45 R18
<b>Spare Tire Size</b>	None

## Audio/Interior Lighting

<b>Speaker Brand Name</b>	○ Voice of Burmester Berlin (USD 1,147)
<b>Number of speakers</b>	• 8 horns; ○ 13 horns
<b>Interior ambient lighting</b>	• 64 colors

## Driving functions

<b>Navigation traffic information display</b>	•
<b>Lane assist</b>	○
<b>Lane Keeping Assist System</b>	○
<b>Cruise control system</b>	• Cruise control; ○ Full speed adaptive cruise
<b>Satellite navigation system</b>	•
<b>Driving assistance level</b>	○L2
<b>Lane centering</b>	○
<b>Road traffic sign recognition</b>	○
<b>Map Brand</b>	• Gaud
<b>AR real-time navigation</b>	○
<b>Parking Assist</b>	•

## Exterior lighting

<b>Low beam light source</b>	•LED
<b>High beam light source</b>	•LED

## Exterior lighting (continued)

<b>LED daytime running lights</b>	<ul style="list-style-type: none"><li>•</li></ul>
<b>Adaptive high and low beam</b>	<ul style="list-style-type: none"><li>○</li></ul>
<b>Automatic headlights</b>	<ul style="list-style-type: none"><li>•</li></ul>
<b>Height-adjustable headlights</b>	<ul style="list-style-type: none"><li>•</li></ul>
<b>Headlight Delay Off</b>	<ul style="list-style-type: none"><li>•</li></ul>
<b>Lighting features</b>	<ul style="list-style-type: none"><li>○ Geometric multi-beam (USD 1,985)</li></ul>
<b>Turn headlights</b>	<ul style="list-style-type: none"><li>○</li></ul>

## Exterior mirrors

<b>Exterior mirror function</b>	<ul style="list-style-type: none"><li>• Electric adjustment;</li><li>• Electric folding;</li><li>• Rearview mirror memory;</li><li>• Rearview mirror heating;</li><li>• Automatic downturning when reversing;</li><li>• Automatic folding when locked;</li><li>• Automatic anti-glare</li></ul>
---------------------------------	---

## Appearance/anti-theft

<b>Rim material</b>	<ul style="list-style-type: none"><li>• Aluminum alloy</li></ul>
<b>Electric trunk</b>	<ul style="list-style-type: none"><li>•</li></ul>
<b>Electronic engine immobilizer</b>	<ul style="list-style-type: none"><li>•</li></ul>
<b>Central locking system in the car</b>	<ul style="list-style-type: none"><li>•</li></ul>
<b>Key Type</b>	<ul style="list-style-type: none"><li>• Remote key</li></ul>
<b>Keyless start system</b>	<ul style="list-style-type: none"><li>•</li></ul>
<b>Keyless entry function</b>	<ul style="list-style-type: none"><li>• Full car</li></ul>
<b>Hands-free Trunk</b>	<ul style="list-style-type: none"><li>•</li></ul>
<b>Remote start function</b>	<ul style="list-style-type: none"><li>•</li></ul>

## Skylight/Glass

<b>Sunroof Type</b>	<ul style="list-style-type: none"><li>• Sectional electric sunroof</li></ul>
<b>Front/rear electric windows</b>	Front •/Rear •
<b>One-touch window lifting function</b>	<ul style="list-style-type: none"><li>• Full car</li></ul>
<b>Window anti-pinch function</b>	<ul style="list-style-type: none"><li>•</li></ul>
<b>Car makeup mirror</b>	<ul style="list-style-type: none"><li>• Driver's side ambient light;</li><li>• Passenger-side ambient light;</li><li>• Rear-row ambient light</li></ul>

## Skylight/Glass (continued)

<b>Rear wiper</b>	-
<b>Rain sensor wiper function</b>	• Rainfall-sensing

## Interior and exterior color

<b>Exterior Color</b>	Turquoise green:#193A48; Obsidian black:#000000; Sapphire blue:#0D2C95; Arctic white:#F4F4F4; Ruby black:#1B100F; Graphite gray:#4E5158; Time and space silver:#ACACAE
<b>Interior Color</b>	Chestnut Brown/Coffee Brown:#3C2426/#221F1F; Black:#000000; Saddle Brown/Macchiato Beige:#844B41/#D0D0D0

## Steering wheel/interior mirror

<b>Steering Wheel Material</b>	• Leather
<b>Steering wheel position adjustment</b>	• Electric up and down front and rear adjustment
<b>Multi-function steering wheel</b>	•
<b>Heated Steering Wheel</b>	○(USD 515)
<b>Steering wheel memory</b>	•
<b>Trip computer display screen</b>	• Color
<b>Full LCD instrument panel</b>	•
<b>LCD instrument size</b>	• 12.3 inches
<b>Interior rearview mirror function</b>	• Automatic anti-glare
<b>Gear shifting</b>	• Electronic gear shift
<b>HUD Head Up Digital Display</b>	○(USD 1,324)
<b>ETC Device</b>	○(USD 441)
<b>Steering Wheel Shift Paddles</b>	•

## Intelligent configuration

<b>Connected Car Services</b>	•
<b>OTA Updates</b>	•
<b>4G/5G Network</b>	•4G

## Intelligent configuration (continued)

<b>Mobile APP remote function</b>	<ul style="list-style-type: none"><li>• Door control;</li><li>• Vehicle start-up;</li><li>• Vehicle condition inquiry/diagnosis;</li><li>• Vehicle location/vehicle search</li></ul>
-----------------------------------	--

## Driving Control

<b>Driving mode switch</b>	<ul style="list-style-type: none"><li>• Sport;</li><li>• Economy;</li><li>• Standard/Comfort;</li><li>• Customization/Personalization</li></ul>
<b>Automatic parking</b>	<ul style="list-style-type: none"><li>•</li></ul>
<b>Hill start assist</b>	<ul style="list-style-type: none"><li>•</li></ul>
<b>Variable suspension function</b>	<ul style="list-style-type: none"><li>• Soft and hard adjustment of suspension</li></ul>
<b>Variable steering ratio</b>	<ul style="list-style-type: none"><li>•</li></ul>
<b>Engine start-stop technology</b>	<ul style="list-style-type: none"><li>•</li></ul>

## Driving Hardware

<b>Front/rear parking radar</b>	Front •/Rear •
<b>Driving Assistance Camera System</b>	<ul style="list-style-type: none"><li>• 360-degree panoramic image</li></ul>

## In-car charging

<b>Multimedia/charging port</b>	<ul style="list-style-type: none"><li>•Type-C</li></ul>
<b>Number of USB/Type-C ports</b>	<ul style="list-style-type: none"><li>• 3 in the front/3 in the back</li></ul>
<b>Mobile phone wireless charging function</b>	<ul style="list-style-type: none"><li>• Front row</li></ul>

## Optional Package

<b>Optional Package</b>	Zhixiang Package 2(USD 441; Including: heated rear seats); Zhile Package 2(USD 676; Including: MBUX Intelligent Human-Computer Interaction System Real Scene Crossing Navigation and Driving Recorder ); Zhixiang package 3(USD 1,397; Including: refreshing function, in-car air conditioning components); Zhixiang package 1(USD 2,324; Including: front air-conditioned seats, leather interior); Smart driving package 1(USD 3,529; Including: driving assistance component enhanced version, traffic sign assistance system)
-------------------------	---

---

"●" = Standard equipment

"□" = Not available

"○" = Optional equipment.

Note: These are Chinese market vehicles. Warranty coverage is not available outside of China.