

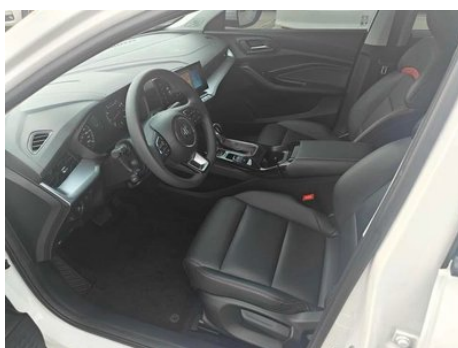
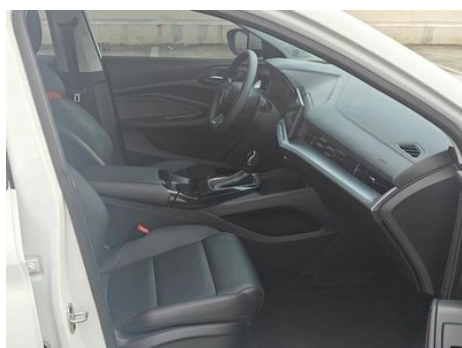
Vehicle Detail Report

MG5 2022 180DVVT CVT Youth Fashion Edition

Basic Information

Brand	MG
Mileage	22,500 km
Color	White
First Registration	2023-07-01
Transfer Count	0

Vehicle Images





Vehicle Condition

1. Metal parts, original finish.

Configuration Information

Model Information

Model Name	MG5 2022 180DVVT CVT Youth Fashion Edition
Launch Date	2022.06

Basic parameters

Vehicle Class	compact car
Energy Type	Gasoline
Maximum Power (kW)	88
Maximum Torque (N·m)	150
Transmission	CVT continuously variable transmission (Simulate the 8th gear)
Body Type	Sedan
Engine	1.5L 120 hp L4
Dimensions (L×W×H) (mm)	4675*1842*1473
Official 0-100 km/h Acceleration (s)	-
Top Speed (km/h)	180
Curb Weight (kg)	1260
Maximum Gross Weight (kg)	1699

Basic parameters (continued)

NEDC Combined Fuel Consumption (L/100km)	5.7
WLTP Combined Fuel Consumption (L/100km)	6.5

engine

Engine Model	15S4C
Displacement (mL)	1498
Displacement (L)	1.5
Induction Type	Naturally aspirated
Cylinder Arrangement	L
Number of Cylinders	4
Valves per Cylinder	4
Valve Train	DOHC
Maximum Power (PS)	120
Max Power Speed (rpm)	6000
Max Torque Speed (rpm)	4500
Maximum net power (kW)	84
Fuel Grade	92.
Fuel Delivery System	Multi-point EFI
Cylinder Head Material	Aluminum alloy
Cylinder Block Material	cast iron
Engine layout	Horizontal

Screen/System

Central control color screen	<ul style="list-style-type: none">• Touch LCD screen
Infotainment Screen Size	<ul style="list-style-type: none">• 10.25 inches
Bluetooth/In-car Phone	<ul style="list-style-type: none">•
Smartphone Integration/ Mirroring	Support, HUAWEI HiCar
Voice recognition control system	<ul style="list-style-type: none">• Multimedia system;• Telephone

Body

Length (mm)	4675
Width (mm)	1842
Height (mm)	1473
Wheelbase (mm)	2680

Body (continued)

Front Track (mm)	1570
Rear Track (mm)	1574
Door Opening Type	Swing door
Number of Doors	4
Number of Seats	5
Fuel Tank Capacity (L)	50
Trunk volume (L)	401
Drag Coefficient (Cd)	-
Approach Angle (°)	15
Departure Angle (°)	20

Gearbox

Abbreviation	CVT continuously variable transmission (Simulate the 8th gear)
Number of Gears	8
Transmission Type	Continuously Variable Transmission (CVT)

Chassis steering

Drive Type	Front-engine, Front-wheel drive (FF)
Front Suspension Type	MacPherson strut independent suspension
Rear Suspension Type	Torsion-beam non-independent suspension
Power Steering Type	Electric power assist
Vehicle structure	bearing type

Seat Configuration

Seat Material	<ul style="list-style-type: none">• Fabric
Main seat adjustment	<ul style="list-style-type: none">• Front and rear adjustment;• Backrest adjustment;• Height adjustment (2 directions)
Co-seat adjustment method	<ul style="list-style-type: none">• Front and rear adjustment;• Backrest adjustment
Electric adjustment of driver's seat and passenger seat	-
Front passenger seat rear adjustable buttons	-
Rear seat folding	<ul style="list-style-type: none">• Overall down
Front/rear center armrest	Front •/Rear

Seat Configuration (continued)

Rear cup holder	-
-----------------	---

Active safety

Anti-lock Braking System (ABS)	•
Electronic Brakeforce Distribution (EBD/CBC)	•
Brake Assist System (EBA/BAS/BA)	•
Traction Control System (ASR/TCS/TRC)	•
Electronic Stability Control (ESC/ESP/DSC)	•
Tire Pressure Monitoring System (TPMS)	• Tire pressure display
Seat Belt Reminder	• Main driving position
ISOFIX Child Seat Anchors	•
Lane Departure Warning System (LDWS)	-
Autonomous Emergency Braking (AEB)	-
Driver Fatigue Detection	-

Air conditioning/refrigerator

Air conditioning temperature control method	• Manual air conditioning
Rear Independent Climate Control	-
Rear seat air vents	-
Temperature zone control	-
Car air purifier	-
In-cabin PM2.5 Filter	•

Passive safety

Driver/passenger airbag	Main •/Sub •
Front/rear side airbags	-
Front/rear head airbags (curtain airbags)	-

Wheel brake

Front Brake Type	Ventilation, Disc-type
Rear Brake Type	Disc-type

Wheel brake (continued)

Parking brake type	Electronic parking
Front Tire Size	205/55 R16
Rear Tire Size	205/55 R16
Spare Tire Size	Non-full size

Audio/Interior Lighting

Number of speakers	• 4 speakers
---------------------------	--------------

Driving functions

Navigation traffic information display	-
Lane assist	-
Lane Keeping Assist System	-
Cruise control system	• Cruise control
Satellite navigation system	-
Parking Assist	-

Exterior lighting

Low beam light source	•LED
High beam light source	•LED
LED daytime running lights	-
Adaptive high and low beam	-
Automatic headlights	•
Height-adjustable headlights	•
Headlight Delay Off	•

Exterior mirrors

Exterior mirror function	• Electric adjustment
---------------------------------	-----------------------

Appearance/anti-theft

Rim material	• Aluminum alloy
Electric trunk	-
Electronic engine immobilizer	•
Central locking system in the car	•
Key Type	• Remote key

Appearance/anti-theft (continued)

Keyless start system	•
Keyless entry function	• Driving position

Skylight/Glass

Front/rear electric windows	Front •/Back •
One-touch window lifting function	• Driving position
Window anti-pinch function	•
Rear wiper	-

Interior and exterior color

Exterior Color	Cyber Grey:#505050; Brighton Blue:#495E92; Red flame:#782320; Nuclear yellow:#FAE132; Snow mountain white:#FFFFFF; Yao Shi Hei:#010101
Interior Color	Knight Black:#000000

Steering wheel/interior mirror

Steering Wheel Material	• Plastic
Steering wheel position adjustment	• Manual up and down adjustment
Multi-function steering wheel	•
Heated Steering Wheel	-
Steering wheel memory	-
Trip computer display screen	• Color
Full LCD instrument panel	-
LCD instrument size	• 3.5 inches
Interior rearview mirror function	• Manual anti-glare
Gear shifting	• Mechanical gear shift

Intelligent configuration

Connected Car Services	-
OTA Updates	-

Driving Control

Automatic parking	•
--------------------------	---

Driving Hardware

Driving Hardware (continued)

Front/rear parking radar	Front/Back •
Driving Assistance Camera System	• Reversing image

In-car charging

Multimedia/charging port	•USB
Number of USB/Type-C ports	• Front row, 3 pieces

"●" = Standard equipment

"-" = Not available

"○" = Optional equipment.

Note: These are Chinese market vehicles. Warranty coverage is not available outside of China.