

Vehicle Detail Report

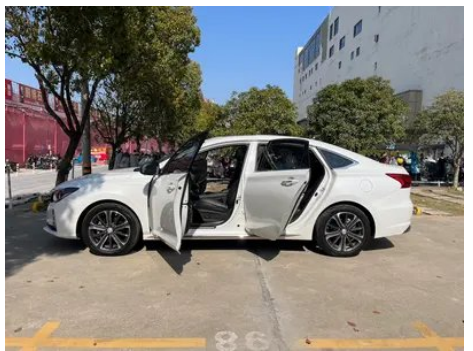
Changan Raeton CC 2021 Blue Whale Edition 1.5T DCT Flagship

Basic Information

Brand	Changan
Mileage	48,000 km
Color	White
First Registration	2021-12-01
Transfer Count	0

Vehicle Images







Vehicle Condition

1. Driver's seat rails and frame, Corrosion. 2. Front passenger seat rails and frame, Corrosion.

Configuration Information

Model Information

Model Name	Changan Raeton CC 2021 Blue Whale Edition 1.5T DCT Flagship
Launch Date	2020.08

Basic parameters

Vehicle Class	compact car
Energy Type	Gasoline
Maximum Power (kW)	132
Maximum Torque (N·m)	300
Transmission	7-speed wet dual-clutch
Body Type	Sedan
Engine	1.5T 180 horsepower L4
Dimensions (L×W×H) (mm)	4800*1825*1465
Official 0-100 km/h Acceleration (s)	-
Top Speed (km/h)	210
Curb Weight (kg)	1460
Maximum Gross Weight (kg)	-
NEDC Combined Fuel Consumption (L/100km)	6.2

engine

Engine Model	JL473ZQ5
Displacement (mL)	1494
Displacement (L)	1.5
Induction Type	Turbocharging
Cylinder Arrangement	L

engine (continued)

Number of Cylinders	4
Valves per Cylinder	4
Valve Train	DOHC
Maximum Power (PS)	180
Max Power Speed (rpm)	5500
Max Torque Speed (rpm)	1250-3500
Maximum net power (kW)	123
Fuel Grade	92.
Fuel Delivery System	Direct injection
Cylinder Head Material	Aluminum alloy
Cylinder Block Material	Aluminum alloy
Engine layout	Horizontal

Screen/System

Central control color screen	<ul style="list-style-type: none">• Touch LCD screen
Infotainment Screen Size	<ul style="list-style-type: none">• 10.25 inches
Bluetooth/In-car Phone	<ul style="list-style-type: none">•
Voice recognition control system	<ul style="list-style-type: none">• Multimedia system;• Navigation;• Telephone;• Air conditioning;• Sunroof

Body

Length (mm)	4800
Width (mm)	1825
Height (mm)	1465
Wheelbase (mm)	2770
Front Track (mm)	1568
Rear Track (mm)	1583
Door Opening Type	swing door
Number of Doors	4
Number of Seats	5
Fuel Tank Capacity (L)	62
Trunk volume (L)	520
Drag Coefficient (Cd)	-
Approach Angle (°)	15
Departure Angle (°)	19

Gearbox

Abbreviation	7-speed wet dual-clutch
Number of Gears	7
Transmission Type	Wet Dual-Clutch Transmission (DCT)

Chassis steering

Drive Type	Front-engine, Front-wheel drive (FF)
Front Suspension Type	MacPherson independent suspension
Rear Suspension Type	Multi-link independent suspension
Power Steering Type	Electric power assistance
Vehicle structure	bearing type

Seat Configuration

Seat Material	<ul style="list-style-type: none">• Imitation leather
Main seat adjustment	<ul style="list-style-type: none">• Front and rear adjustment;• Backrest adjustment;• Height adjustment (4-way);• Lumbar support (2-way)
Co-seat adjustment method	<ul style="list-style-type: none">• Front and rear adjustment;• Backrest adjustment
Electric adjustment of driver's seat and passenger seat	Main •/Deputy •
Front seat functions	<ul style="list-style-type: none">• Heating;• Ventilation
Electric seat memory function	<ul style="list-style-type: none">• Driving position
Front passenger seat rear adjustable buttons	-
Front/rear center armrest	Front •/Rear •
Rear cup holder	<ul style="list-style-type: none">•

Active safety

Anti-lock Braking System (ABS)	<ul style="list-style-type: none">•
Electronic Brakeforce Distribution (EBD/CBC)	<ul style="list-style-type: none">•
Brake Assist System (EBA/BAS/BA)	<ul style="list-style-type: none">•
Traction Control System (ASR/TCS/TRC)	<ul style="list-style-type: none">•
Electronic Stability Control (ESC/ESP/DSC)	<ul style="list-style-type: none">•

Active safety (continued)

Tire Pressure Monitoring System (TPMS)	• Tire pressure display
Seat Belt Reminder	• Front row
ISOFIX Child Seat Anchors	•
Lane Departure Warning System (LDWS)	•
Autonomous Emergency Braking (AEB)	•
Driver Fatigue Detection	-
Emergency Call System (eCall)	•

Air conditioning/refrigerator

Air conditioning temperature control method	• Automatic air conditioning
Rear Independent Climate Control	-
Rear seat air vents	•
Temperature zone control	-
Car air purifier	•
In-cabin PM2.5 Filter	•
Negative ion generator	•

Passive safety

Driver/passenger airbag	Main •/Deputy •
Front/rear side airbags	Front •/Rear-
Front/rear head airbags (curtain airbags)	Front •/Rear •

Wheel brake

Front Brake Type	Ventilation disc
Rear Brake Type	Disc
Parking brake type	Electronic Parking
Front Tire Size	215/50 R17
Rear Tire Size	215/50 R17
Spare Tire Size	Not full-size

Audio/Interior Lighting

Number of speakers	• 6 speakers
Interior ambient lighting	• Monochrome

Driving functions

Driving functions (continued)

Navigation traffic information display	<ul style="list-style-type: none">•
Lane assist	-
Lane Keeping Assist System	-
Cruise control system	<ul style="list-style-type: none">• Full speed adaptive cruise
Satellite navigation system	<ul style="list-style-type: none">•
Road traffic sign recognition	<ul style="list-style-type: none">•
Parking Assist	-

Exterior lighting

Low beam light source	<ul style="list-style-type: none">•LED
High beam light source	<ul style="list-style-type: none">•LED
LED daytime running lights	<ul style="list-style-type: none">•
Adaptive high and low beam	<ul style="list-style-type: none">•
Automatic headlights	<ul style="list-style-type: none">•
Height-adjustable headlights	<ul style="list-style-type: none">•
Headlight Delay Off	<ul style="list-style-type: none">•

Exterior mirrors

Exterior mirror function	<ul style="list-style-type: none">•Electric adjustment;•Electric folding;•Rearview mirror memory;•Rearview mirror heating;•Automatically turn down when reversing;•Automatically fold when locking the car
---------------------------------	---

Appearance/anti-theft

Rim material	<ul style="list-style-type: none">• Aluminum alloy
Electronic engine immobilizer	<ul style="list-style-type: none">•
Central locking system in the car	<ul style="list-style-type: none">•
Key Type	<ul style="list-style-type: none">• Remote key
Keyless start system	<ul style="list-style-type: none">•
Keyless entry function	<ul style="list-style-type: none">• Driving position
Remote start function	<ul style="list-style-type: none">•

Skylight/Glass

Skylight/Glass (continued)

Sunroof Type	• Openable panoramic sunroof
Front/rear electric windows	Front •/Rear •
One-touch window lifting function	• Driving position
Window anti-pinch function	•
Car makeup mirror	• Main driving position; • First officer
Rear wiper	-

Interior and exterior color

Exterior Color	dazzle gray #464E5C Moonlight White #F4F4F4 starry blue #28617F Flowing Light Purple #59296E Noble Black #000000
Interior Color	Black:#000000

Steering wheel/interior mirror

Steering Wheel Material	• Cortex
Steering wheel position adjustment	• Manual up and down front and rear adjustment
Multi-function steering wheel	•
Heated Steering Wheel	-
Steering wheel memory	-
Trip computer display screen	• Color
Full LCD instrument panel	•
LCD instrument size	• 10.25 inches
Interior rearview mirror function	• Manual anti-glare
Gear shifting	• Mechanical gear shift

Intelligent configuration

Connected Car Services	•
OTA Updates	•
4G/5G Network	•4G

Driving Control

Driving mode switch	• Movement
Automatic parking	•
Hill start assist	•

Driving Hardware

Front/rear parking radar	Front •/Rear •
Driving Assistance Camera System	• 360-degree panoramic image
Number of cameras	• 4
Number of ultrasonic radars	• 6

In-car charging

Multimedia/charging port	•USB
Number of USB/Type-C ports	• 2 in the First row/1 in the 2nd-row

"●" = Standard equipment

"-" = Not available

"○" = Optional equipment.

Note: These are Chinese market vehicles. Warranty coverage is not available outside of China.