

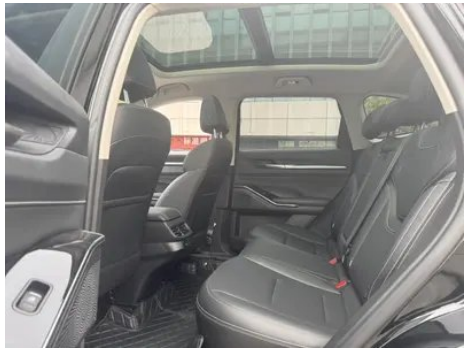
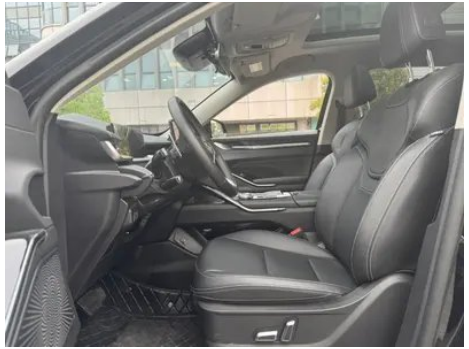
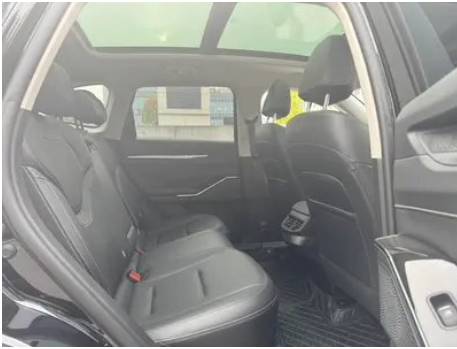
Vehicle Detail Report

Haval H6 2024 1.5T Automatic two-wheel drive
Max version

Basic Information

Brand	Haval
Mileage	16,000 km
Color	Black
First Registration	2024-03-01
Transfer Count	0

Vehicle Images





Vehicle Condition

1. Right rear quarter panel, Scratch.

Configuration Information

Model Information

Model Name	Haval H6 2024 1.5T Two-wheel drive Max
Launch Date	2024.06

Basic parameters

Vehicle Class	Compact SUV
Energy Type	Gasoline
Maximum Power (kW)	135
Maximum Torque (N·m)	275
Transmission	7-speed wet dual-clutch
Body Type	SUV
Engine	1.5T 184 horsepower L4
Dimensions (L×W×H) (mm)	4703*1886*1730
Official 0-100 km/h Acceleration (s)	-
Top Speed (km/h)	190
Curb Weight (kg)	1560
Maximum Gross Weight (kg)	1990
WLTP Combined Fuel Consumption (L/100km)	7.13

engine

Engine Model	GW4B15L
Displacement (mL)	1499
Displacement (L)	1.5
Induction Type	Turbocharging
Cylinder Arrangement	L
Number of Cylinders	4
Valves per Cylinder	4
Valve Train	DOHC
Maximum Power (PS)	184
Max Power Speed (rpm)	5500-6000
Max Torque Speed (rpm)	1500-4000
Maximum net power (kW)	130
Fuel Grade	92.
Fuel Delivery System	Direct injection
Cylinder Head Material	Aluminum alloy
Cylinder Block Material	Aluminum alloy
Engine layout	Horizontal

Screen/System

Central control color screen	<ul style="list-style-type: none">• Touch LCD screen
Infotainment Screen Size	<ul style="list-style-type: none">• 14.6 inches
Bluetooth/In-car Phone	<ul style="list-style-type: none">•
Smartphone Integration/Mirroring	<ul style="list-style-type: none">• Original factory interconnection/mapping;• Support HUAWEI HiCar
Voice recognition control system	<ul style="list-style-type: none">• Multimedia system;• Navigation;• Telephone;• Air conditioning;• Sunroof
Voice wake-up recognition by region	<ul style="list-style-type: none">• Dual Zone
In-vehicle intelligent system	<ul style="list-style-type: none">•Coffee OS
Vehicle system storage (GB)	<ul style="list-style-type: none">•128
App Store	<ul style="list-style-type: none">•
Voice assistant wake-up word	<ul style="list-style-type: none">• Hello, Haffer
Voice wake-up word-free	<ul style="list-style-type: none">•

Screen/System (continued)

Continuous speech recognition	<ul style="list-style-type: none">
--------------------------------------	--------------------------------------------------

Body

Length (mm)	4703
Width (mm)	1886
Height (mm)	1730
Wheelbase (mm)	2738
Front Track (mm)	1631
Rear Track (mm)	1640
Door Opening Type	swing door
Number of Doors	5
Number of Seats	5
Fuel Tank Capacity (L)	61
Trunk volume (L)	560
Drag Coefficient (Cd)	-
Approach Angle (°)	19
Departure Angle (°)	26

Gearbox

Abbreviation	7-speed wet dual-clutch
Number of Gears	7
Transmission Type	Wet Dual-Clutch Transmission (DCT)

Chassis steering

Drive Type	Front-engine, Front-wheel drive (FF)
Front Suspension Type	MacPherson independent suspension
Rear Suspension Type	Multi-link independent suspension
Power Steering Type	Electric power assistance
Vehicle structure	bearing type

Seat Configuration

Seat Material	<ul style="list-style-type: none">Imitation leather
Main seat adjustment	<ul style="list-style-type: none">Front and rear adjustment;Backrest adjustment;Height adjustment (2-way)
Co-seat adjustment method	<ul style="list-style-type: none">Front and rear adjustment;Backrest adjustment

Seat Configuration (continued)

Electric adjustment of driver's seat and passenger seat	Main •/Deputy •
Front seat functions	• Heating
Front passenger seat rear adjustable buttons	-
Rear seat folding	• Proportional down
Front/rear center armrest	Front •/Rear •
Rear cup holder	•

Active safety

Anti-lock Braking System (ABS)	•
Electronic Brakeforce Distribution (EBD/CBC)	•
Brake Assist System (EBA/BAS/BA)	•
Traction Control System (ASR/TCS/TRC)	•
Electronic Stability Control (ESC/ESP/DSC)	•
Tire Pressure Monitoring System (TPMS)	• Tire pressure display
Seat Belt Reminder	• Full car
ISOFIX Child Seat Anchors	•
Lane Departure Warning System (LDWS)	•
Autonomous Emergency Braking (AEB)	•
Driver Fatigue Detection	•
Forward Collision Warning (FCW)	•
Emergency Call System (eCall)	•
Built-in Dashcam	•

Air conditioning/refrigerator

Air conditioning temperature control method	• Automatic air conditioning
Rear Independent Climate Control	-

Air conditioning/refrigerator (continued)

Rear seat air vents	•
Temperature zone control	•
Car air purifier	-
In-cabin PM2.5 Filter	•
Negative ion generator	•
Air quality monitoring	•

Passive safety

Driver/passenger airbag	Main •/Deputy •
Front/rear side airbags	Front •/Rear-
Front/rear head airbags (curtain airbags)	Front •/Rear •

Wheel brake

Front Brake Type	Ventilation disc
Rear Brake Type	Disc
Parking brake type	Electronic Parking
Front Tire Size	225/55 R19
Rear Tire Size	225/55 R19
Spare Tire Size	Not full-size
Spare tire placement	In the trunk

Audio/Interior Lighting

Number of speakers	• 9 speakers
---------------------------	--------------

Driving functions

Navigation traffic information display	•
Lane assist	-
Lane Keeping Assist System	•
Cruise control system	• Full speed adaptive cruise
Satellite navigation system	•
Driving assistance level	•L2
Lane centering	•
Road traffic sign recognition	•
Map Brand	• Gaud
Parking Assist	-

Exterior lighting

Low beam light source	•LED
High beam light source	•LED
LED daytime running lights	•
Adaptive high and low beam	•
Automatic headlights	•
Height-adjustable headlights	•
Headlight Delay Off	•

Exterior mirrors

Exterior mirror function	• Electric adjustment; • Electric folding; • Rearview mirror heating; • Automatic folding when locked
---------------------------------	-------------------------------------------------------------------------------------------------------

Appearance/anti-theft

Rim material	• Aluminum alloy
Electric trunk	•
Electronic engine immobilizer	•
Central locking system in the car	•
Key Type	• Remote key; • Bluetooth key
Keyless start system	•
Keyless entry function	• Front row
Electric trunk position memory	•
Roof rack	•
Remote start function	•

Skylight/Glass

Sunroof Type	• Openable panoramic sunroof
Front/rear electric windows	Front •/Rear •
One-touch window lifting function	• Full car
Window anti-pinch function	•
Car makeup mirror	• Main driver's lamp; • co-pilot's lamp
Rear wiper	•

Skylight/Glass (continued)

Rain sensor wiper function	<ul style="list-style-type: none">• Rainfall-sensing
-----------------------------------	--------------------------------------------------------------------

Interior and exterior color

Exterior Color	Xingmang gold (A0A gold):#F5EADB; Interstellar Grey (Ayers Grey):#646664; Star spiral black (sun gold black):#000000; Star white (Hamilton white):#FFFFFF
Interior Color	Black style (black):#000000; Black/luxury brown (black brown):#000000/#A57858; Grey/pure rice (gray rice):#5C5D57/#C5C4C0

Steering wheel/interior mirror

Steering Wheel Material	<ul style="list-style-type: none">• Cortex
Steering wheel position adjustment	<ul style="list-style-type: none">• Manual up and down front and rear adjustment
Multi-function steering wheel	<ul style="list-style-type: none">•
Heated Steering Wheel	-
Steering wheel memory	-
Trip computer display screen	<ul style="list-style-type: none">• Color
Full LCD instrument panel	<ul style="list-style-type: none">•
LCD instrument size	<ul style="list-style-type: none">• 10.25 inches
Interior rearview mirror function	<ul style="list-style-type: none">• Manual anti-glare
Gear shifting	<ul style="list-style-type: none">• Electronic gear shift
HUD Head Up Digital Display	<ul style="list-style-type: none">•
HUD head up size	<ul style="list-style-type: none">•9 inches

Intelligent configuration

Connected Car Services	<ul style="list-style-type: none">•
OTA Updates	<ul style="list-style-type: none">•
4G/5G Network	<ul style="list-style-type: none">•4G
Mobile APP remote function	<ul style="list-style-type: none">• Door control; • Vehicle start; • Air conditioning control; • Seat heating; • Vehicle positioning/ vehicle search
Wi-Fi hotspots	<ul style="list-style-type: none">•

Driving Control

Driving Control (continued)

Driving mode switch	• Sport; • Economy; • Standard/Comfort; • Snow
Automatic parking	•
Steep slope descent	•
Hill start assist	•
Engine start-stop technology	•

Driving Hardware

Front/rear parking radar	Front-/Rear •
Driving Assistance Camera System	• 360-degree panoramic image; • Vehicle side blind area image
Front perception camera	• Monocular
Number of cameras	• 5
Number of ultrasonic radars	• 4
Transparent chassis/540-degree imaging	•

In-car charging

Multimedia/charging port	•USB;•Type-C
Number of USB/Type-C ports	• 2 in the front row/2 in the back row
Mobile phone wireless charging function	• Front row
Luggage compartment 12V power socket	•
USB/Type-C maximum charging power	•60W
Mobile phone wireless charging power	•50W

"●" = Standard equipment

"-" = Not available

"○" = Optional equipment.

Note: These are Chinese market vehicles. Warranty coverage is not available outside of China.