

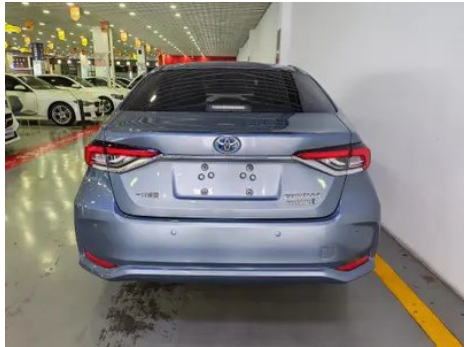
Vehicle Detail Report

Toyota Corolla 2022 Dual Power 1.8L E-CVT Pioneer Edition

Basic Information

Brand	Toyota
Mileage	50,000 km
Color	Dark gray
First Registration	2022-07-01
Transfer Count	0

Vehicle Images





Vehicle Condition

1. Right upper side rail, Deformation. 2. Spare wheel well, Water stains, Soiling. 3. Driver's seat rails and frame, Signs of removal. 4. Front passenger seat rails and frame, Signs of removal. 5. Left rear quarter panel, Scratch, Scratch damage. 6. Right rear quarter panel, Paint chip, Scrape, Deformation.

Configuration Information

Model Information

Model Name	Toyota Corolla 2022 Dual Power 1.8L E-CVT Pioneer Edition
Launch Date	2021.10

Basic parameters

Vehicle Class	compact car
Energy Type	Hybrid Electric Vehicle (HEV)

Basic parameters (continued)

Maximum Power (kW)	72
Maximum Torque (N·m)	142
Transmission	E-CVT continuously variable transmission
Body Type	Sedan
Engine	1.8L 98 horsepower L4
Dimensions (L×W×H) (mm)	4635*1780*1455
Official 0-100 km/h Acceleration (s)	-
Top Speed (km/h)	160
Curb Weight (kg)	1410
Maximum Gross Weight (kg)	1845
Electric Motor (PS)	72
NEDC Combined Fuel Consumption (L/100km)	4

engine

Engine Model	8ZR-FXE
Displacement (mL)	1798
Displacement (L)	1.8
Induction Type	Natural aspiration
Cylinder Arrangement	L
Number of Cylinders	4
Valves per Cylinder	4
Compression Ratio	13
Valve Train	DOHC
Bore (mm)	80.5
Stroke (mm)	88.3
Maximum Power (PS)	98
Max Power Speed (rpm)	5200
Max Torque Speed (rpm)	3600
Maximum net power (kW)	72
Fuel Grade	92.
Fuel Delivery System	Multi-point EFI
Cylinder Head Material	Aluminum alloy

engine (continued)

Cylinder Block Material	Aluminum alloy
Engine layout	Horizontal
Engine-specific technologies	VVT-i

Electric Motor

Motor Type	Permanent magnet/synchronous
Total Electric Motor Power (kW)	53
Total Electric Motor Torque (N·m)	163
Front Electric Motor Max Power (kW)	53
Front Electric Motor Max Torque (N·m)	163
System total power (kW)	90
Number of drive motors	-
Motor Layout	-
Battery Type	Nickel-metal hydride battery

Screen/System

Central control color screen	<ul style="list-style-type: none">• Touch LCD screen
Infotainment Screen Size	<ul style="list-style-type: none">• 8 inches
Bluetooth/In-car Phone	<ul style="list-style-type: none">•
Smartphone Integration/Mirroring	<ul style="list-style-type: none">• Apple CarPlay support;• Baidu CarLife support;• HUAWEI HiCar support

Body

Length (mm)	4635
Width (mm)	1780
Height (mm)	1455
Wheelbase (mm)	2700
Front Track (mm)	1527
Rear Track (mm)	1526
Ground Clearance (Fully Loaded) (mm)	146
Door Opening Type	swing door
Number of Doors	4
Number of Seats	5

Body (continued)

Fuel Tank Capacity (L)	43
Trunk volume (L)	470
Drag Coefficient (Cd)	-
Approach Angle (°)	12
Departure Angle (°)	11
Minimum Turning Radius (m)	5.2

Gearbox

Abbreviation	E-CVT continuously variable transmission
Number of Gears	stepless speed change
Transmission Type	Electronic Continuously Variable Transmission (E-CVT)

Chassis steering

Drive Type	Front-engine, Front-wheel drive (FF)
Front Suspension Type	MacPherson independent suspension
Rear Suspension Type	E-type multi-link independent suspension
Power Steering Type	Electric power assistance
Vehicle structure	bearing type

Seat Configuration

Seat Material	<ul style="list-style-type: none">Fabric
Main seat adjustment	<ul style="list-style-type: none">Front and rear adjustment;Backrest adjustment;Height adjustment (2-way)
Co-seat adjustment method	<ul style="list-style-type: none">Front and rear adjustment;Backrest adjustment
Electric adjustment of driver's seat and passenger seat	-
Front passenger seat rear adjustable buttons	-
Front/rear center armrest	Front •/Rear-
Rear cup holder	-

Active safety

Anti-lock Braking System (ABS)	<ul style="list-style-type: none">
---------------------------------------	--

Active safety (continued)

Electronic Brakeforce Distribution (EBD/CBC)	•
Brake Assist System (EBA/BAS/BA)	•
Traction Control System (ASR/TCS/TRC)	•
Electronic Stability Control (ESC/ESP/DSC)	•
Tire Pressure Monitoring System (TPMS)	• Tire pressure display
Seat Belt Reminder	• Full vehicle
ISOFIX Child Seat Anchors	•
Lane Departure Warning System (LDWS)	•
Autonomous Emergency Braking (AEB)	•
Driver Fatigue Detection	-
Forward Collision Warning (FCW)	•
Low Speed Alert	•
Emergency Call System (eCall)	•

Air conditioning/refrigerator

Air conditioning temperature control method	• Automatic air conditioning
Rear Independent Climate Control	-
Rear seat air vents	-
Temperature zone control	-
Car air purifier	-
In-cabin PM2.5 Filter	•

Passive safety

Driver/passenger airbag	Main •/Deputy •
Front/rear side airbags	Front •/Rear-
Front/rear head airbags (curtain airbags)	Front •/Rear •
Knee airbag	• Driver's knee airbag
Passenger seat cushion airbag	•

Wheel brake

Front Brake Type	Ventilation disc
Rear Brake Type	Disc
Parking brake type	Electronic Parking
Front Tire Size	195/65 R15
Rear Tire Size	195/65 R15
Spare Tire Size	Not full-size

Audio/Interior Lighting

Number of speakers	• 6 speakers
---------------------------	--------------

Driving functions

Navigation traffic information display	-
Lane assist	-
Lane Keeping Assist System	•
Cruise control system	• Full speed adaptive cruise
Satellite navigation system	-
Driving assistance level	•L2
Lane centering	•
Driver assistance systems	•Toyota Safety Sense
Parking Assist	-

Exterior lighting

Low beam light source	• Halogen
High beam light source	• Halogen
LED daytime running lights	•
Adaptive high and low beam	•
Automatic headlights	•
Front fog lights	•LED
Height-adjustable headlights	•
Headlight Delay Off	-

Exterior mirrors

Exterior mirror function	• Electric adjustment; • Mirror heating
---------------------------------	---

Appearance/anti-theft

Appearance/anti-theft (continued)

Rim material	<ul style="list-style-type: none">• Aluminum alloy
Electronic engine immobilizer	<ul style="list-style-type: none">•
Central locking system in the car	<ul style="list-style-type: none">•
Key Type	<ul style="list-style-type: none">• Remote key
Keyless start system	<ul style="list-style-type: none">•

Skylight/Glass

Front/rear electric windows	Front •/Rear •
One-touch window lifting function	<ul style="list-style-type: none">• Full vehicle
Window anti-pinch function	<ul style="list-style-type: none">•
Car makeup mirror	<ul style="list-style-type: none">• Main driving position;• First officer
Rear wiper	-

Interior and exterior color

Exterior Color	super white #FDFDFD Platinum White #E5E5E5 Platinum Bronze Metallic #8D857F biotite #000000 Celestite Metallic #48525E Silver Metallic #D8DDD6
Interior Color	Black:#3E4146; Black/Beige:#3E4146/#C9A782

Steering wheel/interior mirror

Steering Wheel Material	<ul style="list-style-type: none">• Plastic
Steering wheel position adjustment	<ul style="list-style-type: none">• Manual up and down front and rear adjustment
Multi-function steering wheel	<ul style="list-style-type: none">•
Heated Steering Wheel	-
Steering wheel memory	-
Trip computer display screen	<ul style="list-style-type: none">• Color
Full LCD instrument panel	-
LCD instrument size	<ul style="list-style-type: none">• 4.2 inches
Interior rearview mirror function	<ul style="list-style-type: none">• Manual anti-glare
Gear shifting	<ul style="list-style-type: none">• Mechanical gear shift

Intelligent configuration

Intelligent configuration (continued)

Connected Car Services	-
OTA Updates	-
Mobile APP remote function	•

Driving Control

Driving mode switch	• Movement; • Economy
Automatic parking	•
Hill start assist	•
Energy recovery system	•

Driving Hardware

Front/rear parking radar	-
Front perception camera	• Monocular
Number of cameras	• 1

In-car charging

Multimedia/charging port	•USB
Number of USB/Type-C ports	• 1 in the front row

"●" = Standard equipment

"-" = Not available

"○" = Optional equipment.

Note: These are Chinese market vehicles. Warranty coverage is not available outside of China.