

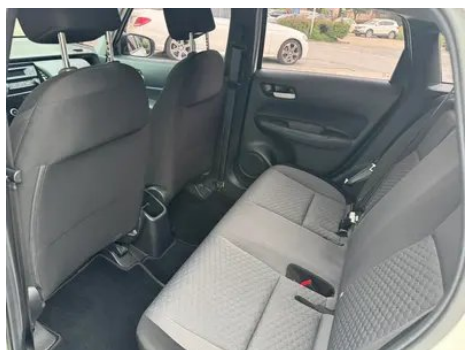
Vehicle Detail Report

Honda Fit 2021 1.5L CVT Tide Enjoyment Edition

Basic Information

Brand	Honda
Mileage	32,000 km
Color	White
First Registration	2021-04-01
Transfer Count	0

Vehicle Images





Vehicle Condition

1. Left front door, Body panel repair. 2. Left rear door, Body panel repair. 3. Right rear door, Body panel repair. 4. Right rear quarter panel, Body panel repair.

Configuration Information

Model Information

Model Name	Honda Fit 2021 1.5L CVT Tide Enjoyment Edition
Launch Date	2020.08

Basic parameters

Vehicle Class	Small car
Energy Type	Gasoline
Maximum Power (kW)	96

Basic parameters (continued)

Maximum Torque (N·m)	155
Transmission	CVT continuously variable transmission
Body Type	Hatchback
Engine	1.5L 131 hp L4
Dimensions (L×W×H) (mm)	4109*1694*1537
Official 0-100 km/h Acceleration (s)	10.6
Top Speed (km/h)	190
Curb Weight (kg)	1107
Maximum Gross Weight (kg)	1610
NEDC Combined Fuel Consumption (L/100km)	5.3

engine

Engine Model	L15BU
Displacement (mL)	1498
Displacement (L)	1.5
Induction Type	Natural aspiration
Cylinder Arrangement	L
Number of Cylinders	4
Valves per Cylinder	4
Compression Ratio	11.5
Valve Train	DOHC
Maximum Power (PS)	131
Max Power Speed (rpm)	6600
Max Torque Speed (rpm)	4600
Maximum net power (kW)	96
Fuel Grade	92.
Fuel Delivery System	Direct injection
Cylinder Head Material	Aluminum alloy
Cylinder Block Material	Aluminum alloy
Engine layout	Horizontal
Engine-specific technologies	i-VTEC

Screen/System

Bluetooth/In-car Phone	-
-------------------------------	---

Body

Length (mm)	4109
Width (mm)	1694
Height (mm)	1537
Wheelbase (mm)	2530
Front Track (mm)	1485
Rear Track (mm)	1473
Door Opening Type	swing door
Number of Doors	5
Number of Seats	5
Fuel Tank Capacity (L)	40
Trunk volume (L)	-
Drag Coefficient (Cd)	-
Approach Angle (°)	16
Departure Angle (°)	27

Gearbox

Abbreviation	CVT continuously variable transmission
Number of Gears	stepless speed change
Transmission Type	Continuously Variable Transmission (CVT)

Chassis steering

Drive Type	Front-engine, Front-wheel drive (FF)
Front Suspension Type	MacPherson independent suspension
Rear Suspension Type	Torsion beam non-independent suspension
Power Steering Type	Electric power assistance
Vehicle structure	bearing type

Seat Configuration

Seat Material	• Fabric
Main seat adjustment	• Front and rear adjustment; • Backrest adjustment; • Height adjustment (2-way)
Co-seat adjustment method	• Front and rear adjustment; • Backrest adjustment

Seat Configuration (continued)

Electric adjustment of driver's seat and passenger seat	-
Front passenger seat rear adjustable buttons	-
Rear seat folding	• Overall down
Front/rear center armrest	-
Rear cup holder	•

Active safety

Anti-lock Braking System (ABS)	•
Electronic Brakeforce Distribution (EBD/CBC)	•
Brake Assist System (EBA/BAS/BA)	•
Traction Control System (ASR/TCS/TRC)	•
Electronic Stability Control (ESC/ESP/DSC)	•
Tire Pressure Monitoring System (TPMS)	• Tire pressure alarm
Seat Belt Reminder	• Front row
ISOFIX Child Seat Anchors	•
Lane Departure Warning System (LDWS)	-
Autonomous Emergency Braking (AEB)	-
Driver Fatigue Detection	-

Air conditioning/refrigerator

Air conditioning temperature control method	• Manual air conditioning
Rear Independent Climate Control	-
Rear seat air vents	-
Temperature zone control	-
Car air purifier	-
In-cabin PM2.5 Filter	•

Passive safety

Driver/passenger airbag	Main •/Deputy •
--------------------------------	-----------------

Passive safety (continued)

Front/rear side airbags	Front •/Rear-
Front/rear head airbags (curtain airbags)	-

Wheel brake

Front Brake Type	Ventilation disc
Rear Brake Type	Drum type
Parking brake type	handbrake
Front Tire Size	185/60 R15
Rear Tire Size	185/60 R15
Spare Tire Size	Not full-size

Audio/Interior Lighting

Number of speakers	• 2 Horns
---------------------------	-----------

Driving functions

Navigation traffic information display	-
Lane assist	-
Lane Keeping Assist System	-
Satellite navigation system	-
Parking Assist	-

Exterior lighting

Low beam light source	• Halogen
High beam light source	• Halogen
LED daytime running lights	-
Adaptive high and low beam	-
Automatic headlights	-
Height-adjustable headlights	•
Headlight Delay Off	•

Exterior mirrors

Exterior mirror function	• Electric adjustment
---------------------------------	-----------------------

Appearance/anti-theft

Rim material	• Steel
Electric trunk	-

Appearance/anti-theft (continued)

Electronic engine immobilizer	<ul style="list-style-type: none">•
Central locking system in the car	<ul style="list-style-type: none">•
Key Type	<ul style="list-style-type: none">• Remote key
Keyless start system	<ul style="list-style-type: none">•

Skylight/Glass

Front/rear electric windows	Front •/Rear •
One-touch window lifting function	<ul style="list-style-type: none">• Driving position
Window anti-pinch function	<ul style="list-style-type: none">•
Car makeup mirror	<ul style="list-style-type: none">• COPILOT
Rear wiper	<ul style="list-style-type: none">•

Interior and exterior color

Exterior Color	Taffeta white:#FFFFFF; Electric purple:#565678; Ruili red:#E9494B; Sky blue:#2B5A7D; Galaxy white:#EBF0EB; Blooming orange:#CE6755
Interior Color	Grey/White:#C8C8C8/#F5F5; Grey/Orange:#C8C8C8/#EB8060

Steering wheel/interior mirror

Steering Wheel Material	<ul style="list-style-type: none">• Plastic
Steering wheel position adjustment	<ul style="list-style-type: none">• Manual up and down front and rear adjustment
Multi-function steering wheel	<ul style="list-style-type: none">•
Heated Steering Wheel	-
Steering wheel memory	-
Trip computer display screen	<ul style="list-style-type: none">• Color
Full LCD instrument panel	<ul style="list-style-type: none">•
LCD instrument size	<ul style="list-style-type: none">• 7 inches
Interior rearview mirror function	<ul style="list-style-type: none">• Manual anti-glare
Gear shifting	<ul style="list-style-type: none">• Mechanical gear shift

Intelligent configuration

Connected Car Services	-
-------------------------------	---

Intelligent configuration (continued)

OTA Updates	-
--------------------	---

Driving Control

Driving mode switch	• Movement; • Economy
Automatic parking	-
Hill start assist	•

Driving Hardware

Front/rear parking radar	-
---------------------------------	---

In-car charging

Multimedia/charging port	•USB
Number of USB/Type-C ports	• 2 in the front row

"●" = Standard equipment

"-" = Not available

"○" = Optional equipment.

Note: These are Chinese market vehicles. Warranty coverage is not available outside of China.