

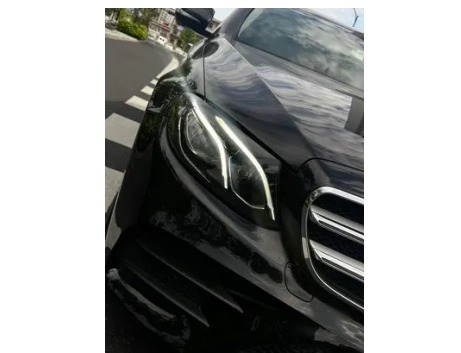
# Vehicle Detail Report

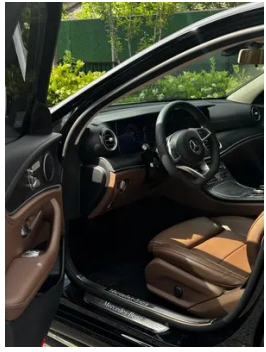
## Mercedes-Benz E-Class 2018 Restyling E 200 L Sporty

### Basic Information

Brand	Mercedes-Benz
Mileage	70,000 km
Color	Black
First Registration	2018-09-01
Transfer Count	0

### Vehicle Images







## Vehicle Condition

1. Inner side of left B-pillar, Scratch, Dent. 2. Rear body panel, Deformation, Crack, Body panel repair. 3. Driver's seat rails and frame, Signs of removal. 4. Front passenger seat rails and frame, Signs of removal. 5. Left rear quarter panel, Deformation. 6. Right rear quarter panel, Deformation.

## Configuration Information

### Model Information

<b>Model Name</b>	Mercedes-Benz E-Class 2018 Restyling E 200 L Sporty
<b>Launch Date</b>	2018.03

### Basic parameters

<b>Vehicle Class</b>	Mid-size and large cars
<b>Energy Type</b>	Gasoline
<b>Maximum Power (kW)</b>	135
<b>Maximum Torque (N·m)</b>	300
<b>Transmission</b>	9-gear manual integration
<b>Body Type</b>	Sedan
<b>Engine</b>	2.0L 184 hp L4
<b>Dimensions (L×W×H) (mm)</b>	5065*1860*1467
<b>Official 0-100 km/h Acceleration (s)</b>	8.6
<b>Top Speed (km/h)</b>	235
<b>Curb Weight (kg)</b>	1770
<b>Maximum Gross Weight (kg)</b>	-
<b>NEDC Combined Fuel Consumption (L/100km)</b>	6.9

### engine

<b>Engine Model</b>	274 920
<b>Displacement (mL)</b>	1991
<b>Displacement (L)</b>	2.0
<b>Induction Type</b>	Turbocharging

## engine (continued)

<b>Cylinder Arrangement</b>	L
<b>Number of Cylinders</b>	4
<b>Valves per Cylinder</b>	4
<b>Valve Train</b>	DOHC
<b>Maximum Power (PS)</b>	184
<b>Max Power Speed (rpm)</b>	5500
<b>Max Torque Speed (rpm)</b>	1200-4000
<b>Maximum net power (kW)</b>	-
<b>Fuel Grade</b>	95.
<b>Fuel Delivery System</b>	Direct injection
<b>Cylinder Head Material</b>	Aluminum alloy
<b>Cylinder Block Material</b>	Aluminum alloy

## Screen/System

<b>Central control color screen</b>	<ul style="list-style-type: none"><li>•</li></ul>
<b>Infotainment Screen Size</b>	<ul style="list-style-type: none"><li>• 12.3 inches</li></ul>
<b>Bluetooth/In-car Phone</b>	<ul style="list-style-type: none"><li>•</li></ul>
<b>Smartphone Integration/Mirroring</b>	<ul style="list-style-type: none"><li>•</li></ul>

## Body

<b>Length (mm)</b>	5065
<b>Width (mm)</b>	1860
<b>Height (mm)</b>	1467
<b>Wheelbase (mm)</b>	3079
<b>Front Track (mm)</b>	1596
<b>Rear Track (mm)</b>	1600
<b>Door Opening Type</b>	-
<b>Number of Doors</b>	4
<b>Number of Seats</b>	5
<b>Fuel Tank Capacity (L)</b>	66
<b>Trunk volume (L)</b>	-
<b>Drag Coefficient (Cd)</b>	-

## Gearbox

<b>Abbreviation</b>	9-gear manual integration
<b>Number of Gears</b>	9

## Gearbox (continued)

<b>Transmission Type</b>	Automatic Transmission with Manual Mode (AT)
--------------------------	--

## Chassis steering

<b>Drive Type</b>	Front-engine, Rear-wheel drive (FR)
<b>Front Suspension Type</b>	Multi-link independent suspension
<b>Rear Suspension Type</b>	Multi-link independent suspension
<b>Power Steering Type</b>	Electric power assistance
<b>Vehicle structure</b>	bearing type

## Seat Configuration

<b>Seat Material</b>	<input type="radio"/> Genuine leather; • Imitation leather
<b>Main seat adjustment</b>	• Front and rear adjustment; • Backrest adjustment; • Height adjustment (2-way); • Height adjustment (4-way)
<b>Co-seat adjustment method</b>	• Front and rear adjustment; • Backrest adjustment
<b>Electric adjustment of driver's seat and passenger seat</b>	Main •/Deputy •
<b>Front seat functions</b>	<input type="radio"/> Heating (USD 441); <input type="radio"/> Ventilation
<b>Electric seat memory function</b>	<input type="radio"/>
<b>Front passenger seat rear adjustable buttons</b>	•
<b>Second row seat adjustment</b>	<input type="radio"/> Backrest adjustment
<b>Front/rear center armrest</b>	Front •/Rear •
<b>Rear cup holder</b>	•
<b>Second row seat functions</b>	<input type="radio"/> Heating
<b>Second row seats electrically adjustable</b>	<input type="radio"/>

## Active safety

<b>Anti-lock Braking System (ABS)</b>	•
<b>Electronic Brakeforce Distribution (EBD/CBC)</b>	•
<b>Brake Assist System (EBA/BAS/BA)</b>	•

## Active safety (continued)

<b>Traction Control System (ASR/TCS/TRC)</b>	•
<b>Electronic Stability Control (ESC/ESP/DSC)</b>	•
<b>Tire Pressure Monitoring System (TPMS)</b>	•
<b>Seat Belt Reminder</b>	•
<b>ISOFIX Child Seat Anchors</b>	•
<b>Lane Departure Warning System (LDWS)</b>	○
<b>Autonomous Emergency Braking (AEB)</b>	•
<b>Driver Fatigue Detection</b>	•
<b>Emergency Call System (eCall)</b>	•

## Air conditioning/refrigerator

<b>Air conditioning temperature control method</b>	• Automatic air conditioning
<b>Rear Independent Climate Control</b>	○
<b>Rear seat air vents</b>	•
<b>Temperature zone control</b>	•
<b>Car air purifier</b>	-
<b>In-cabin PM2.5 Filter</b>	-

## Passive safety

<b>Driver/passenger airbag</b>	Main •/Deputy •
<b>Front/rear side airbags</b>	Front •/Rear ○
<b>Front/rear head airbags (curtain airbags)</b>	Front •/Rear •
<b>Run-flat tires</b>	•

## Wheel brake

<b>Front Brake Type</b>	Ventilation disc
<b>Rear Brake Type</b>	Ventilation disc
<b>Parking brake type</b>	Electronic Parking
<b>Front Tire Size</b>	-
<b>Rear Tire Size</b>	-
<b>Spare Tire Size</b>	None

## Audio/Interior Lighting

<b>Speaker Brand Name</b>	<input type="radio"/> Burmester Voices of Berlin
<b>Number of speakers</b>	<input type="radio"/> $\geq 12$ horns; <input type="checkbox"/> 8-9 horns
<b>Interior ambient lighting</b>	<input type="checkbox"/>

## Driving functions

<b>Navigation traffic information display</b>	-
<b>Lane assist</b>	<input type="radio"/>
<b>Lane Keeping Assist System</b>	-
<b>Cruise control system</b>	<input type="checkbox"/> Cruise control; <input type="radio"/> Adaptive cruise
<b>Satellite navigation system</b>	<input type="checkbox"/>
<b>Parking Assist</b>	<input type="checkbox"/>

## Exterior lighting

<b>Low beam light source</b>	<input type="checkbox"/> LED
<b>High beam light source</b>	<input type="checkbox"/> LED
<b>LED daytime running lights</b>	<input type="checkbox"/>
<b>Adaptive high and low beam</b>	<input type="radio"/>
<b>Automatic headlights</b>	<input type="checkbox"/>
<b>Height-adjustable headlights</b>	<input type="checkbox"/>
<b>Headlight Delay Off</b>	-
<b>Turn headlights</b>	<input type="radio"/>

## Exterior mirrors

<b>Exterior mirror function</b>	<input type="checkbox"/> Electric adjustment; <input type="checkbox"/> Electric folding; <input type="radio"/> Mirror memory; <input type="checkbox"/> Mirror heating; <input type="radio"/> Automatic anti-glare
---------------------------------	---

## Appearance/anti-theft

<b>Rim material</b>	<input type="checkbox"/> Aluminum alloy
<b>Electric trunk</b>	<input type="radio"/>
<b>Electronic engine immobilizer</b>	<input type="checkbox"/>
<b>Central locking system in the car</b>	<input type="checkbox"/>
<b>Key Type</b>	<input type="checkbox"/> Remote key
<b>Keyless start system</b>	<input type="checkbox"/>

## Appearance/anti-theft (continued)

<b>Keyless entry function</b>	○
<b>Appearance Kit</b>	• Sports style
<b>Hands-free Trunk</b>	○
<b>Electric door closing</b>	○

## Skylight/Glass

<b>Sunroof Type</b>	• Electric sunroof; ○ Panoramic sunroof
<b>Front/rear electric windows</b>	Front •/Rear •
<b>One-touch window lifting function</b>	• Full car
<b>Window anti-pinch function</b>	•
<b>Rear windshield sunshade</b>	○
<b>Car makeup mirror</b>	•
<b>Rear wiper</b>	-
<b>Rain sensor wiper function</b>	•
<b>Rear side window sunshades</b>	○
<b>Rear side privacy glass</b>	•

## Interior and exterior color

<b>Exterior Color</b>	Obsidian black:#000000; Gemstone blue:#0D2C95; Arctic white:#F4F4F4; Zircon red:#B00D15; Hydrosilica alcalite blue:#0C0D32; Crystal brown:#2F1D0D; Carbon gray blue:#464C64; Iridium silver:#D7DBE9; Moonlight lime:#566262; Diamond white:#DDD3B7B7B7
<b>Interior Color</b>	Black:#000000; Black/Chestnut Brown:#000000/#3C2426; Black/Macchiato Beige:#000000/#D4D0CF

## Steering wheel/interior mirror

<b>Steering Wheel Material</b>	• Cortex
<b>Steering wheel position adjustment</b>	• Manual up and down front and rear adjustment; ○ Electric up and down front and rear adjustment
<b>Multi-function steering wheel</b>	•

## Steering wheel/interior mirror (continued)

<b>Heated Steering Wheel</b>	-
<b>Steering wheel memory</b>	○
<b>Trip computer display screen</b>	•
<b>Full LCD instrument panel</b>	•
<b>Interior rearview mirror function</b>	○ Automatic anti-glare
<b>HUD Head Up Digital Display</b>	○
<b>Steering Wheel Shift Paddles</b>	•

## Intelligent configuration

<b>Connected Car Services</b>	○
<b>OTA Updates</b>	-

## Driving Control

<b>Automatic parking</b>	•
<b>Hill start assist</b>	•
<b>Variable suspension function</b>	• Suspension soft-hard adjustment; ○ Suspension height adjustment
<b>Air Suspension</b>	○
<b>Variable steering ratio</b>	•
<b>Engine start-stop technology</b>	•

## Driving Hardware

<b>Front/rear parking radar</b>	Front •/Rear •
<b>Driving Assistance Camera System</b>	• Reversing image; ○ 360-degree panoramic image

## In-car charging

<b>Multimedia/charging port</b>	•USB
<b>Mobile phone wireless charging function</b>	•
<b>220V/230V power supply</b>	○

## Optional Package

## Optional Package (continued)

Optional Package	
	Zhile package (USD 1,456; including: 220-volt socket at the rear, head-up display system); smart driving package (USD 2,059; including: lane tracking package, including blind spot assist system and active lane keeping assist system, remote parking assist System, parking component with 360 ° camera); Zhienjoy package 1(USD 2,132; including: memory components, automatic anti-glare internal and external rearview mirrors, keyless entry comfort components (KEYLESS-GO)); Smart package 3(USD 2,500; Including: rear central touch screen, multi-zone intelligent air conditioning (THERMOTRONIC), heated rear seats, rear wireless charging function); Smart package 2(USD 2,618; Including: leather interior, front air-conditioned seats); Smart package 4(USD 3,338; Including: electrically adjustable rear seats with memory function, rear seat memory function, electric closing function, interior air conditioning module (AIR-BALANCE), rear wireless charging function, rear window power sun visor)

---

"●" = Standard equipment

"-" = Not available

"○" = Optional equipment.

Note: These are Chinese market vehicles. Warranty coverage is not available outside of China.