

# Vehicle Detail Report

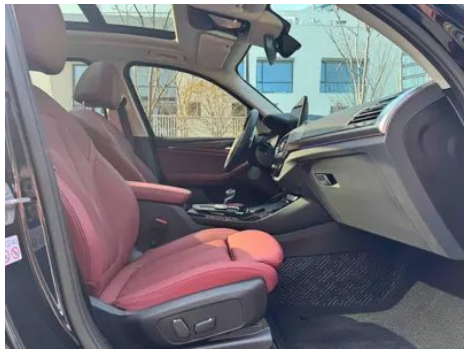
## BMW X3 2023 xDrive30i Leading Type M Obsidian Night Suit

### Basic Information

|                    |            |
|--------------------|------------|
| Brand              | BMW        |
| Mileage            | 30,900 km  |
| Color              | Black      |
| First Registration | 2024-04-01 |
| Transfer Count     | 0          |

### Vehicle Images





## Vehicle Condition

1. Original metal body panels with factory paint.

## Configuration Information

### Model Information

|                   |  |
|-------------------|--|
| <b>Model Name</b> | BMW 2023 X3 xDrive30i Luxury Edition M Night Sky Package |
|-------------------|--|

## Model Information (continued)

|             |         |
|-------------|---------|
| Launch Date | 2023.05 |
|-------------|---------|

### Basic parameters

|  |                           |
|--|---------------------------|
| Vehicle Class                            | Mid-size SUV              |
| Energy Type                              | Gasoline                  |
| Maximum Power (kW)                       | 180                       |
| Maximum Torque (N·m)                     | 350                       |
| Transmission                             | 8-gear manual integration |
| Body Type                                | SUV                       |
| Engine                                   | 2.0T 245 horsepower L4    |
| Dimensions (L×W×H) (mm)                  | 4737*1891*1689            |
| Official 0-100 km/h Acceleration (s)     | 6.8                       |
| Top Speed (km/h)                         | 230                       |
| Curb Weight (kg)                         | 1880                      |
| Maximum Gross Weight (kg)                | 2510                      |
| WLTP Combined Fuel Consumption (L/100km) | 8.5                       |

### engine

|                        |                  |
|------------------------|------------------|
| Engine Model           | B48B20G          |
| Displacement (mL)      | 1998             |
| Displacement (L)       | 2.0              |
| Induction Type         | Turbocharging    |
| Cylinder Arrangement   | L                |
| Number of Cylinders    | 4                |
| Valves per Cylinder    | 4                |
| Valve Train            | DOHC             |
| Maximum Power (PS)     | 245              |
| Max Power Speed (rpm)  | 5000-6500        |
| Max Torque Speed (rpm) | 1450-4800        |
| Maximum net power (kW) | 180              |
| Fuel Grade             | 95.              |
| Fuel Delivery System   | Direct injection |
| Cylinder Head Material | Aluminum alloy   |

## engine (continued)

|                                |                |
|--------------------------------|----------------|
| <b>Cylinder Block Material</b> | Aluminum alloy |
| <b>Engine layout</b>           | Longitudinal   |

## Screen/System

|   |  |
|---|--|
| <b>Central control color screen</b>     | <ul style="list-style-type: none"><li>• Touch LCD screen</li></ul>   |
| <b>Infotainment Screen Size</b>         | <ul style="list-style-type: none"><li>• 12.3 inches</li></ul>  |
| <b>Bluetooth/In-car Phone</b>           | <ul style="list-style-type: none"><li>•</li></ul>  |
| <b>Smartphone Integration/Mirroring</b> | <ul style="list-style-type: none"><li>• Support CarPlay;</li><li>• Support CarLife</li></ul>                   |
| <b>Voice recognition control system</b> | <ul style="list-style-type: none"><li>• Multimedia system;</li><li>• Navigation;</li><li>• Telephone</li></ul> |
| <b>In-vehicle intelligent system</b>    | <ul style="list-style-type: none"><li>• iDrive</li></ul>   |

## Body

|                               |            |
|-------------------------------|------------|
| <b>Length (mm)</b>            | 4737       |
| <b>Width (mm)</b>             | 1891       |
| <b>Height (mm)</b>            | 1689       |
| <b>Wheelbase (mm)</b>         | 2864       |
| <b>Front Track (mm)</b>       | 1610       |
| <b>Rear Track (mm)</b>        | 1594       |
| <b>Door Opening Type</b>      | swing door |
| <b>Number of Doors</b>        | 5          |
| <b>Number of Seats</b>        | 5          |
| <b>Fuel Tank Capacity (L)</b> | 65         |
| <b>Trunk volume (L)</b>       | -          |
| <b>Drag Coefficient (Cd)</b>  | -          |
| <b>Approach Angle (°)</b>     | 24         |
| <b>Departure Angle (°)</b>    | 22         |

## Gearbox

|                          |  |
|--------------------------|--|
| <b>Abbreviation</b>      | 8-gear manual integration                    |
| <b>Number of Gears</b>   | 8  |
| <b>Transmission Type</b> | Automatic Transmission with Manual Mode (AT) |

## Chassis steering

|                   |                                       |
|-------------------|---------------------------------------|
| <b>Drive Type</b> | Front-engine, All-wheel drive (F-AWD) |
|-------------------|---------------------------------------|

## Chassis steering (continued)

|                                       |   |
|---------------------------------------|---|
| <b>Four-wheel drive</b>               | Timely four-wheel drive                           |
| <b>Central differential structure</b> | Multi-plate clutch                                |
| <b>Front Suspension Type</b>          | Dual-ball-joint MacPherson independent suspension |
| <b>Rear Suspension Type</b>           | Multi-link independent suspension                 |
| <b>Power Steering Type</b>            | Electric power assistance                         |
| <b>Vehicle structure</b>              | bearing type                                      |

## Seat Configuration

|  |  |
|--|--|
| <b>Seat Material</b>   | <ul style="list-style-type: none"><li>• Imitation leather</li></ul>  |
| <b>Main seat adjustment</b>                                    | <ul style="list-style-type: none"><li>• Front and rear adjustment;</li><li>• Backrest adjustment;</li><li>• Height adjustment (4-way);</li><li>• Leg rest adjustment;</li><li>• Lumbar support (4-way)</li></ul> |
| <b>Co-seat adjustment method</b>                               | <ul style="list-style-type: none"><li>• Front and rear adjustment;</li><li>• Backrest adjustment;</li><li>• Height adjustment (4-way);</li><li>• Leg support adjustment</li></ul>                                |
| <b>Electric adjustment of driver's seat and passenger seat</b> | Main •/Deputy •  |
| <b>Front seat functions</b>                                    | <ul style="list-style-type: none"><li>• Heating</li></ul>  |
| <b>Electric seat memory function</b>                           | <ul style="list-style-type: none"><li>• Driving position</li></ul>   |
| <b>Front passenger seat rear adjustable buttons</b>            | -  |
| <b>Second row seat adjustment</b>                              | <ul style="list-style-type: none"><li>• Backrest adjustment</li></ul>  |
| <b>Rear seat folding</b>                                       | <ul style="list-style-type: none"><li>• Proportional down</li></ul>  |
| <b>Front/rear center armrest</b>                               | Front •/Rear •   |
| <b>Rear cup holder</b>   | <ul style="list-style-type: none"><li>•</li></ul>  |

## Active safety

|   |   |
|---|---|
| <b>Anti-lock Braking System (ABS)</b>               | <ul style="list-style-type: none"><li>•</li></ul> |
| <b>Electronic Brakeforce Distribution (EBD/CBC)</b> | <ul style="list-style-type: none"><li>•</li></ul> |
| <b>Brake Assist System (EBA/BAS/BA)</b>             | <ul style="list-style-type: none"><li>•</li></ul> |
| <b>Traction Control System (ASR/TCS/TRC)</b>        | <ul style="list-style-type: none"><li>•</li></ul> |

## Active safety (continued)

|   |                         |
|---|-------------------------|
| <b>Electronic Stability Control (ESC/ESP/DSC)</b> | •                       |
| <b>Tire Pressure Monitoring System (TPMS)</b>     | • Tire pressure display |
| <b>Seat Belt Reminder</b>                         | • Front row             |
| <b>ISOFIX Child Seat Anchors</b>                  | •                       |
| <b>Lane Departure Warning System (LDWS)</b>       | ○                       |
| <b>Autonomous Emergency Braking (AEB)</b>         | •                       |
| <b>Driver Fatigue Detection</b>                   | •                       |
| <b>Forward Collision Warning (FCW)</b>            | •                       |
| <b>Emergency Call System (eCall)</b>              | •                       |
| <b>Built-in Dashcam</b>                           | •                       |

## Air conditioning/refrigerator

|  |                              |
|--|------------------------------|
| <b>Air conditioning temperature control method</b> | • Automatic air conditioning |
| <b>Rear Independent Climate Control</b>            | •                            |
| <b>Rear seat air vents</b>                         | •                            |
| <b>Temperature zone control</b>                    | •                            |
| <b>Car air purifier</b>                            | -                            |
| <b>In-cabin PM2.5 Filter</b>                       | •                            |

## Passive safety

|  |                 |
|--|-----------------|
| <b>Driver/passenger airbag</b>                   | Main •/Deputy • |
| <b>Front/rear side airbags</b>                   | Front •/Rear-   |
| <b>Front/rear head airbags (curtain airbags)</b> | Front •/Rear •  |
| <b>Run-flat tires</b>                            | •               |

## Wheel brake

|                           |                    |
|---------------------------|--------------------|
| <b>Front Brake Type</b>   | Ventilation disc   |
| <b>Rear Brake Type</b>    | Ventilation disc   |
| <b>Parking brake type</b> | Electronic Parking |
| <b>Front Tire Size</b>    | 245/45 R20         |
| <b>Rear Tire Size</b>     | 275/40 R20         |

## Wheel brake (continued)

|                        |      |
|------------------------|------|
| <b>Spare Tire Size</b> | None |
|------------------------|------|

## Audio/Interior Lighting

|                                  |                               |
|----------------------------------|-------------------------------|
| <b>Speaker Brand Name</b>        | • Harman/Kardon Harman Kardon |
| <b>Number of speakers</b>        | • 12 horns; ○ 16 horns        |
| <b>Interior ambient lighting</b> | • 11 colors                   |

## Driving functions

|   |   |
|---|---|
| <b>Navigation traffic information display</b> | •   |
| <b>Lane assist</b>                            | ○   |
| <b>Lane Keeping Assist System</b>             | ○   |
| <b>Cruise control system</b>                  | • Cruise control; ○ Adaptive cruise control (USD 1,618); ○ Full-speed adaptive cruise control |
| <b>Satellite navigation system</b>            | •   |
| <b>Driving assistance level</b>               | ○L2   |
| <b>Rear Cross Traffic Alert</b>               | ○   |
| <b>Lane centering</b>                         | ○   |
| <b>Road traffic sign recognition</b>          | ○   |
| <b>Tracking reverse</b>                       | •   |
| <b>Parking Assist</b>                         | •   |
| <b>Lane Change Assist</b>                     | ○   |

## Exterior lighting

|                                     |      |
|-------------------------------------|------|
| <b>Low beam light source</b>        | •LED |
| <b>High beam light source</b>       | •LED |
| <b>LED daytime running lights</b>   | •    |
| <b>Adaptive high and low beam</b>   | •    |
| <b>Automatic headlights</b>         | •    |
| <b>Height-adjustable headlights</b> | •    |
| <b>Headlight Delay Off</b>          | •    |
| <b>Turn headlights</b>              | •    |

## Exterior mirrors

## Exterior mirrors (continued)

|                                 |   |
|---------------------------------|---|
| <b>Exterior mirror function</b> | <ul style="list-style-type: none"><li>• Electric adjustment;</li><li>• Electric folding;</li><li>• Rearview mirror memory;</li><li>• Rearview mirror heating;</li><li>• Automatic downturning when reversing;</li><li>• Automatic folding when locked;</li><li>• Automatic anti-glare</li></ul> |
|---------------------------------|---|

## Appearance/anti-theft

|  |  |
|--|--|
| <b>Rim material</b>                      | <ul style="list-style-type: none"><li>• Aluminum alloy</li></ul> |
| <b>Electric trunk</b>                    | <ul style="list-style-type: none"><li>•</li></ul>                |
| <b>Electronic engine immobilizer</b>     | <ul style="list-style-type: none"><li>•</li></ul>                |
| <b>Central locking system in the car</b> | <ul style="list-style-type: none"><li>•</li></ul>                |
| <b>Key Type</b>                          | <ul style="list-style-type: none"><li>• Remote key</li></ul>     |
| <b>Keyless start system</b>              | <ul style="list-style-type: none"><li>•</li></ul>                |
| <b>Keyless entry function</b>            | <ul style="list-style-type: none"><li>• Full car</li></ul>       |
| <b>Appearance Kit</b>                    | <ul style="list-style-type: none"><li>• Sports style</li></ul>   |
| <b>Hands-free Trunk</b>                  | <ul style="list-style-type: none"><li>•</li></ul>                |
| <b>Electric trunk position memory</b>    | <ul style="list-style-type: none"><li>•</li></ul>                |
| <b>Roof rack</b>                         | <ul style="list-style-type: none"><li>•</li></ul>                |
| <b>Remote start function</b>             | <ul style="list-style-type: none"><li>•</li></ul>                |

## Skylight/Glass

|  |   |
|--|---|
| <b>Sunroof Type</b>                      | <ul style="list-style-type: none"><li>• Openable panoramic sunroof</li></ul>                    |
| <b>Front/rear electric windows</b>       | Front •/Rear •  |
| <b>One-touch window lifting function</b> | <ul style="list-style-type: none"><li>• Full car</li></ul>                                      |
| <b>Window anti-pinch function</b>        | <ul style="list-style-type: none"><li>•</li></ul>   |
| <b>Car makeup mirror</b>                 | <ul style="list-style-type: none"><li>• Main driver's lamp;</li><li>• co-pilot's lamp</li></ul> |
| <b>Rear wiper</b>                        | <ul style="list-style-type: none"><li>•</li></ul>   |
| <b>Rain sensor wiper function</b>        | <ul style="list-style-type: none"><li>• Rainfall-sensing</li></ul>                              |

## Interior and exterior color

## Interior and exterior color (continued)

|                       |  |
|-----------------------|--|
| <b>Exterior Color</b> | Carbon black:#232A30; Quantum blue:#273F7C; Fragrant red:#810B17; Cashmi silver:#C6C1B4; Ore white:#E7E7E7; Mysterious ash:#262626 |
| <b>Interior Color</b> | Black/Mocha:#000000/#423534; Black:#000000; Black/Volcanic Red:#000000/#8A3D47   |

## Steering wheel/interior mirror

|   |  |
|---|--|
| <b>Steering Wheel Material</b>            | <ul style="list-style-type: none"><li>• Leather</li></ul>                                      |
| <b>Steering wheel position adjustment</b> | <ul style="list-style-type: none"><li>• Manual up and down front and rear adjustment</li></ul> |
| <b>Multi-function steering wheel</b>      | <ul style="list-style-type: none"><li>•</li></ul>  |
| <b>Heated Steering Wheel</b>              | -  |
| <b>Steering wheel memory</b>              | -  |
| <b>Trip computer display screen</b>       | <ul style="list-style-type: none"><li>• Color</li></ul>  |
| <b>Full LCD instrument panel</b>          | <ul style="list-style-type: none"><li>•</li></ul>  |
| <b>LCD instrument size</b>                | <ul style="list-style-type: none"><li>• 12.3 inches</li></ul>                                  |
| <b>Interior rearview mirror function</b>  | <ul style="list-style-type: none"><li>• Automatic anti-glare</li></ul>                         |
| <b>Gear shifting</b>                      | <ul style="list-style-type: none"><li>• Electronic gear shift</li></ul>                        |
| <b>HUD Head Up Digital Display</b>        | ○(USD 1,471)   |
| <b>ETC Device</b>                         | ○(USD 147)   |
| <b>Steering Wheel Shift Paddles</b>       | <ul style="list-style-type: none"><li>•</li></ul>  |

## Intelligent configuration

|                                   |   |
|-----------------------------------|---|
| <b>Connected Car Services</b>     | <ul style="list-style-type: none"><li>•</li></ul>   |
| <b>OTA Updates</b>                | <ul style="list-style-type: none"><li>•</li></ul>   |
| <b>4G/5G Network</b>              | <ul style="list-style-type: none"><li>•4G</li></ul>   |
| <b>Mobile APP remote function</b> | <ul style="list-style-type: none"><li>• Door control;</li><li>• Vehicle startup;</li><li>• Air conditioning control;</li><li>• Vehicle condition inquiry/diagnosis;</li><li>• Vehicle location/vehicle search;</li><li>• Vehicle owner service (searching for charging piles, gas stations, parking lots, etc.);</li><li>• Appointment maintenance/repair</li></ul> |
| <b>Wi-Fi hotspots</b>             | ○   |

## Driving Control

|                                     |   |
|-------------------------------------|---|
| <b>Driving mode switch</b>          | • Sport; • Economy; • Standard/Comfort; • Customization/Personalization |
| <b>Automatic parking</b>            | •   |
| <b>Steep slope descent</b>          | •   |
| <b>Hill start assist</b>            | •   |
| <b>Engine start-stop technology</b> | •   |

## Driving Hardware

|   |                              |
|---|------------------------------|
| <b>Front/rear parking radar</b>         | Front •/Rear •               |
| <b>Driving Assistance Camera System</b> | • 360-degree panoramic image |

## In-car charging

|  |  |
|--|--|
| <b>Multimedia/charging port</b>                | •USB;•Type-C                           |
| <b>Number of USB/Type-C ports</b>              | • 2 in the front row/2 in the back row |
| <b>Mobile phone wireless charging function</b> | ○ Front row                            |

## Optional Package

|                         |  |
|-------------------------|--|
| <b>Optional Package</b> | Silver suit (USD 0; Including: aluminum satin exterior components, silver window frame trim, silver aluminum roof rack, satin silver grille frame); Entertainment package 3(USD 1,103; Including: Harman/Kardon Harman Kardon high-end sound system, mobile phone wireless charging, Wi-Fi hot spots); Pro(USD 2,647; Including: traffic congestion assistance, lane change assistance, cruise speed setting assistance, emergency one-button stop assistance, etc.) |
|-------------------------|--|

"●" = Standard equipment

"\_" = Not available

"○" = Optional equipment.

Note: These are Chinese market vehicles. Warranty coverage is not available outside of China.