

# Vehicle Detail Report

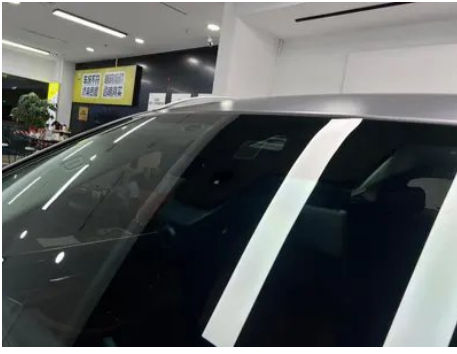
## BMW X3 2022 xDrive25i M Sports suit

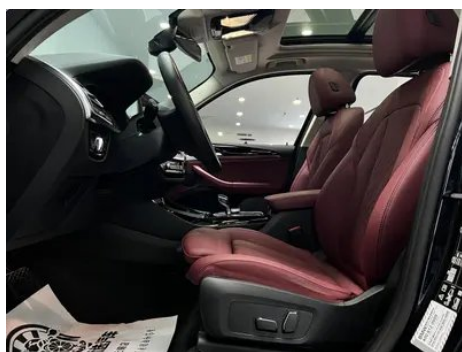
### Basic Information

|                    |            |
|--------------------|------------|
| Brand              | BMW        |
| Mileage            | 31,000 km  |
| Color              | Black      |
| First Registration | 2024-10-01 |
| Transfer Count     | 0          |

### Vehicle Images







## Vehicle Condition

1. Original metal body panels with factory paint.

## Configuration Information

### Model Information

|                    |                                     |
|--------------------|-------------------------------------|
| <b>Model Name</b>  | BMW X3 2022 xDrive25i M Sports suit |
| <b>Launch Date</b> | 2021.08                             |

### Basic parameters

|   |                           |
|---|---------------------------|
| <b>Vehicle Class</b>                            | Mid-size SUV              |
| <b>Energy Type</b>                              | Gasoline                  |
| <b>Maximum Power (kW)</b>                       | 135                       |
| <b>Maximum Torque (N·m)</b>                     | 300                       |
| <b>Transmission</b>                             | 8-gear manual integration |
| <b>Body Type</b>                                | SUV                       |
| <b>Engine</b>                                   | 2.0L 184 hp L4            |
| <b>Dimensions (L×W×H) (mm)</b>                  | 4737*1891*1689            |
| <b>Official 0-100 km/h Acceleration (s)</b>     | 8.9                       |
| <b>Top Speed (km/h)</b>                         | 210                       |
| <b>Curb Weight (kg)</b>                         | 1857                      |
| <b>Maximum Gross Weight (kg)</b>                | 2510                      |
| <b>NEDC Combined Fuel Consumption (L/100km)</b> | 8.4                       |
| <b>WLTP Combined Fuel Consumption (L/100km)</b> | 8.3                       |

### engine

|                          |               |
|--------------------------|---------------|
| <b>Engine Model</b>      | B48B20C       |
| <b>Displacement (mL)</b> | 1998          |
| <b>Displacement (L)</b>  | 2.0           |
| <b>Induction Type</b>    | Turbocharging |

## engine (continued)

|                                |                  |
|--------------------------------|------------------|
| <b>Cylinder Arrangement</b>    | L                |
| <b>Number of Cylinders</b>     | 4                |
| <b>Valves per Cylinder</b>     | 4                |
| <b>Valve Train</b>             | DOHC             |
| <b>Maximum Power (PS)</b>      | 184              |
| <b>Max Power Speed (rpm)</b>   | 5000-6500        |
| <b>Max Torque Speed (rpm)</b>  | 1350-4000        |
| <b>Maximum net power (kW)</b>  | 135              |
| <b>Fuel Grade</b>              | 95.              |
| <b>Fuel Delivery System</b>    | Direct injection |
| <b>Cylinder Head Material</b>  | Aluminum alloy   |
| <b>Cylinder Block Material</b> | Aluminum alloy   |
| <b>Engine layout</b>           | Longitudinal     |

## Screen/System

|  |  |
|--|--|
| <b>Central control color screen</b>      | <ul style="list-style-type: none"><li>• Touch LCD screen</li></ul>   |
| <b>Infotainment Screen Size</b>          | <ul style="list-style-type: none"><li>• 12.3 inches</li></ul>  |
| <b>Bluetooth/In-car Phone</b>            | <ul style="list-style-type: none"><li>•</li></ul>  |
| <b>Smartphone Integration/ Mirroring</b> | <ul style="list-style-type: none"><li>• Support CarPlay;</li><li>• Support CarLife</li></ul>                   |
| <b>Voice recognition control system</b>  | <ul style="list-style-type: none"><li>• Multimedia system;</li><li>• Navigation;</li><li>• Telephone</li></ul> |
| <b>In-vehicle intelligent system</b>     | <ul style="list-style-type: none"><li>• iDrive</li></ul>   |

## Body

|                               |            |
|-------------------------------|------------|
| <b>Length (mm)</b>            | 4737       |
| <b>Width (mm)</b>             | 1891       |
| <b>Height (mm)</b>            | 1689       |
| <b>Wheelbase (mm)</b>         | 2864       |
| <b>Front Track (mm)</b>       | 1600       |
| <b>Rear Track (mm)</b>        | 1616       |
| <b>Door Opening Type</b>      | swing door |
| <b>Number of Doors</b>        | 5          |
| <b>Number of Seats</b>        | 5          |
| <b>Fuel Tank Capacity (L)</b> | 65         |

## Body (continued)

|                              |    |
|------------------------------|----|
| <b>Trunk volume (L)</b>      | -  |
| <b>Drag Coefficient (Cd)</b> | -  |
| <b>Approach Angle (°)</b>    | 24 |
| <b>Departure Angle (°)</b>   | 22 |

## Gearbox

|                          |  |
|--------------------------|--|
| <b>Abbreviation</b>      | 8-gear manual integration                    |
| <b>Number of Gears</b>   | 8  |
| <b>Transmission Type</b> | Automatic Transmission with Manual Mode (AT) |

## Chassis steering

|                                       |   |
|---------------------------------------|---|
| <b>Drive Type</b>                     | Front-engine, All-wheel drive (F-AWD)             |
| <b>Four-wheel drive</b>               | Timely four-wheel drive                           |
| <b>Central differential structure</b> | Multi-plate clutch                                |
| <b>Front Suspension Type</b>          | Dual-ball-joint MacPherson independent suspension |
| <b>Rear Suspension Type</b>           | Multi-link independent suspension                 |
| <b>Power Steering Type</b>            | Electric power assistance                         |
| <b>Vehicle structure</b>              | bearing type                                      |

## Seat Configuration

|  |   |
|--|---|
| <b>Seat Material</b>   | • Imitation leather   |
| <b>Main seat adjustment</b>                                    | • Front and rear adjustment; • Backrest adjustment; • Height adjustment (4-way); • Leg support adjustment |
| <b>Co-seat adjustment method</b>                               | • Front and rear adjustment; • Backrest adjustment; • Height adjustment (4-way); • Leg support adjustment |
| <b>Electric adjustment of driver's seat and passenger seat</b> | Main •/Deputy •   |
| <b>Front seat functions</b>                                    | • Heating   |
| <b>Electric seat memory function</b>                           | • Driving position  |
| <b>Front passenger seat rear adjustable buttons</b>            | -   |
| <b>Second row seat adjustment</b>                              | • Backrest adjustment   |

## Seat Configuration (continued)

|                                  |                     |
|----------------------------------|---------------------|
| <b>Rear seat folding</b>         | • Proportional down |
| <b>Front/rear center armrest</b> | Front •/Rear •      |
| <b>Rear cup holder</b>           | •                   |

## Active safety

|   |                         |
|---|-------------------------|
| <b>Anti-lock Braking System (ABS)</b>               | •                       |
| <b>Electronic Brakeforce Distribution (EBD/CBC)</b> | •                       |
| <b>Brake Assist System (EBA/BAS/BA)</b>             | •                       |
| <b>Traction Control System (ASR/TCS/TRC)</b>        | •                       |
| <b>Electronic Stability Control (ESC/ESP/DSC)</b>   | •                       |
| <b>Tire Pressure Monitoring System (TPMS)</b>       | • Tire pressure display |
| <b>Seat Belt Reminder</b>                           | • Front row             |
| <b>ISOFIX Child Seat Anchors</b>                    | •                       |
| <b>Lane Departure Warning System (LDWS)</b>         | -                       |
| <b>Autonomous Emergency Braking (AEB)</b>           | •                       |
| <b>Driver Fatigue Detection</b>                     | •                       |
| <b>Forward Collision Warning (FCW)</b>              | •                       |
| <b>Emergency Call System (eCall)</b>                | •                       |

## Air conditioning/refrigerator

|  |                              |
|--|------------------------------|
| <b>Air conditioning temperature control method</b> | • Automatic air conditioning |
| <b>Rear Independent Climate Control</b>            | •                            |
| <b>Rear seat air vents</b>                         | •                            |
| <b>Temperature zone control</b>                    | •                            |
| <b>Car air purifier</b>                            | -                            |
| <b>In-cabin PM2.5 Filter</b>                       | •                            |

## Passive safety

|                                |                 |
|--------------------------------|-----------------|
| <b>Driver/passenger airbag</b> | Main •/Deputy • |
|--------------------------------|-----------------|

## Passive safety (continued)

|  |                |
|--|----------------|
| <b>Front/rear side airbags</b>                   | Front •/Rear-  |
| <b>Front/rear head airbags (curtain airbags)</b> | Front •/Rear • |
| <b>Run-flat tires</b>                            | •              |

## Wheel brake

|                           |                    |
|---------------------------|--------------------|
| <b>Front Brake Type</b>   | Ventilation disc   |
| <b>Rear Brake Type</b>    | Ventilation disc   |
| <b>Parking brake type</b> | Electronic Parking |
| <b>Front Tire Size</b>    | 245/50 R19         |
| <b>Rear Tire Size</b>     | 245/50 R19         |
| <b>Spare Tire Size</b>    | None               |

## Audio/Interior Lighting

|                                  |   |
|----------------------------------|---|
| <b>Speaker Brand Name</b>        | <input type="radio"/> Harman/Kardon (USD 1,471) |
| <b>Number of speakers</b>        | • 6 horns; <input type="radio"/> 16 horns       |
| <b>Interior ambient lighting</b> | • 11 colors                                     |

## Driving functions

|   |                       |
|---|-----------------------|
| <b>Navigation traffic information display</b> | •                     |
| <b>Lane assist</b>                            | <input type="radio"/> |
| <b>Lane Keeping Assist System</b>             | -                     |
| <b>Cruise control system</b>                  | • Cruise control      |
| <b>Satellite navigation system</b>            | •                     |
| <b>Rear Cross Traffic Alert</b>               | <input type="radio"/> |
| <b>Road traffic sign recognition</b>          | <input type="radio"/> |
| <b>Tracking reverse</b>                       | <input type="radio"/> |
| <b>Parking Assist</b>                         | <input type="radio"/> |

## Exterior lighting

|                                   |      |
|-----------------------------------|------|
| <b>Low beam light source</b>      | •LED |
| <b>High beam light source</b>     | •LED |
| <b>LED daytime running lights</b> | •    |
| <b>Adaptive high and low beam</b> | •    |
| <b>Automatic headlights</b>       | •    |

## Exterior lighting (continued)

|                                     |   |
|-------------------------------------|---|
| <b>Height-adjustable headlights</b> | <ul style="list-style-type: none"><li>•</li></ul> |
| <b>Headlight Delay Off</b>          | <ul style="list-style-type: none"><li>•</li></ul> |
| <b>Turn headlights</b>              | <ul style="list-style-type: none"><li>•</li></ul> |

## Exterior mirrors

|                                 |   |
|---------------------------------|---|
| <b>Exterior mirror function</b> | <ul style="list-style-type: none"><li>• Electric adjustment;</li><li>• Electric folding;</li><li>• Mirror memory function;</li><li>• Heated mirrors;</li><li>• Automatic downfolding on reverse;</li><li>• Automatic folding upon locking;</li><li>○ Auto-dimming (USD 368)</li></ul> |
|---------------------------------|---|

## Appearance/anti-theft

|  |  |
|--|--|
| <b>Rim material</b>                      | <ul style="list-style-type: none"><li>• Aluminum alloy</li></ul>     |
| <b>Electric trunk</b>                    | <ul style="list-style-type: none"><li>•</li></ul>                    |
| <b>Electronic engine immobilizer</b>     | <ul style="list-style-type: none"><li>•</li></ul>                    |
| <b>Central locking system in the car</b> | <ul style="list-style-type: none"><li>•</li></ul>                    |
| <b>Key Type</b>                          | <ul style="list-style-type: none"><li>• Remote key</li></ul>         |
| <b>Keyless start system</b>              | <ul style="list-style-type: none"><li>•</li></ul>                    |
| <b>Keyless entry function</b>            | <ul style="list-style-type: none"><li>○ Full car (USD 809)</li></ul> |
| <b>Appearance Kit</b>                    | <ul style="list-style-type: none"><li>• Sports style</li></ul>       |
| <b>Hands-free Trunk</b>                  | <ul style="list-style-type: none"><li>○</li></ul>                    |
| <b>Electric trunk position memory</b>    | <ul style="list-style-type: none"><li>•</li></ul>                    |
| <b>Roof rack</b>                         | <ul style="list-style-type: none"><li>•</li></ul>                    |
| <b>Remote start function</b>             | <ul style="list-style-type: none"><li>•</li></ul>                    |

## Skylight/Glass

|  |   |
|--|---|
| <b>Sunroof Type</b>                      | <ul style="list-style-type: none"><li>• Openable panoramic sunroof</li></ul>                    |
| <b>Front/rear electric windows</b>       | Front •/Rear •  |
| <b>One-touch window lifting function</b> | <ul style="list-style-type: none"><li>• Full car</li></ul>                                      |
| <b>Window anti-pinch function</b>        | <ul style="list-style-type: none"><li>•</li></ul>   |
| <b>Car makeup mirror</b>                 | <ul style="list-style-type: none"><li>• Main driver's lamp;</li><li>• co-pilot's lamp</li></ul> |
| <b>Rear wiper</b>                        | <ul style="list-style-type: none"><li>•</li></ul>   |
| <b>Rain sensor wiper function</b>        | <ul style="list-style-type: none"><li>• Rainfall-sensing</li></ul>                              |

## Interior and exterior color

|                       |   |
|-----------------------|---|
| <b>Exterior Color</b> | Fragrant red:#810B17; Quantum blue:#273F7C; Ore white:#E7E7E7; Cashmi silver:#C6C1B4; Mysterious gray:#262626; Carbon black:#232A30 |
| <b>Interior Color</b> | Black/Mocha:#000000/#423534; Black:#000000; Black/Volcanic Red:#000000/#8A3D47  |

## Steering wheel/interior mirror

|   |  |
|---|--|
| <b>Steering Wheel Material</b>            | • Leather                                      |
| <b>Steering wheel position adjustment</b> | • Manual up and down front and rear adjustment |
| <b>Multi-function steering wheel</b>      | •  |
| <b>Heated Steering Wheel</b>              | -  |
| <b>Steering wheel memory</b>              | -  |
| <b>Trip computer display screen</b>       | • Color  |
| <b>Full LCD instrument panel</b>          | •  |
| <b>LCD instrument size</b>                | • 12.3 inches                                  |
| <b>Interior rearview mirror function</b>  | • Automatic anti-glare                         |
| <b>Gear shifting</b>                      | • Electronic gear shift                        |
| <b>HUD Head Up Digital Display</b>        | ○(USD 1,471)                                   |
| <b>ETC Device</b>                         | ○(USD 147)                                     |

## Intelligent configuration

|                                   |  |
|-----------------------------------|--|
| <b>Connected Car Services</b>     | •  |
| <b>OTA Updates</b>                | •  |
| <b>4G/5G Network</b>              | •4G  |
| <b>Mobile APP remote function</b> | • Door control; • Vehicle startup; • Air conditioning control; • Vehicle condition inquiry/diagnosis; • Vehicle location/vehicle search; • Vehicle owner service (searching for charging piles, gas stations, parking lots, etc.);• Appointment maintenance/repair |
| <b>Wi-Fi hotspots</b>             | ○  |

## Driving Control

## Driving Control (continued)

|                                     |   |
|-------------------------------------|---|
| <b>Driving mode switch</b>          | • Sport; • Economy; • Standard/Comfort; • Customization/Personalization |
| <b>Automatic parking</b>            | •   |
| <b>Steep slope descent</b>          | •   |
| <b>Hill start assist</b>            | •   |
| <b>Engine start-stop technology</b> | •   |

## Driving Hardware

|   |                   |
|---|-------------------|
| <b>Front/rear parking radar</b>         | Front •/Rear •    |
| <b>Driving Assistance Camera System</b> | • Reversing image |

## In-car charging

|  |  |
|--|--|
| <b>Multimedia/charging port</b>                | •USB;•Type-C                           |
| <b>Number of USB/Type-C ports</b>              | • 2 in the front row/2 in the back row |
| <b>Mobile phone wireless charging function</b> | ○ Front row                            |

## Optional Package

|                         |   |
|-------------------------|---|
| <b>Optional Package</b> | Entertainment package 1(USD 1,471; Including: Harman/Kardon Harman Kardon high-end sound system, mobile phone wireless charging, Wi-Fi hot spots) |
|-------------------------|---|

---

"●" = Standard equipment

"-" = Not available

"○" = Optional equipment.

Note: These are Chinese market vehicles. Warranty coverage is not available outside of China.