

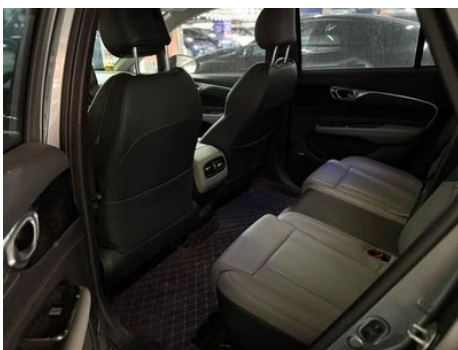
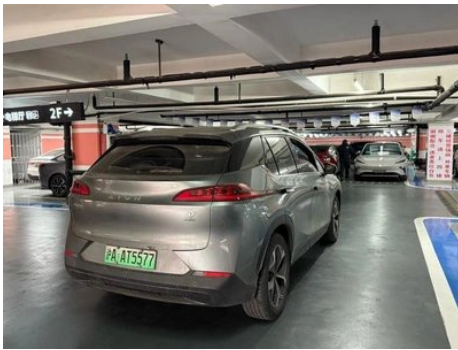
# Vehicle Detail Report

AION V 2021 AION V Plus 70 Smart Technology Edition Lithium iron phosphate

## Basic Information

Brand	AION
Mileage	63,000 km
Color	Silver-gray
First Registration	2022-03-01
Transfer Count	0

## Vehicle Images





## Vehicle Condition

1. Left rear door, Paint repair. 2. Left rocker panel outer trim, Scratch. 3. Right rocker panel outer trim, Scratch.

## Configuration Information

### Model Information

<b>Model Name</b>	AION V 2021 Plus 70 Smart Technology Edition Lithium iron phosphate
<b>Launch Date</b>	2021.09

### Basic parameters

<b>Vehicle Class</b>	Compact SUV
<b>Energy Type</b>	Battery Electric Vehicle (BEV)
<b>Maximum Power (kW)</b>	165
<b>Maximum Torque (N·m)</b>	350
<b>Body Type</b>	SUV
<b>Dimensions (L×W×H) (mm)</b>	4650*1920*1720
<b>Official 0-100 km/h Acceleration (s)</b>	7.9
<b>Top Speed (km/h)</b>	185
<b>Curb Weight (kg)</b>	2040
<b>Maximum Gross Weight (kg)</b>	2450
<b>NEDC Electric Range (km)</b>	500
<b>Electric Motor (PS)</b>	224
<b>Electricity Consumption in Fuel Equivalent (L/100km)</b>	1.7

### Electric Motor

<b>Motor Type</b>	Permanent magnet/synchronous
<b>Total Electric Motor Power (kW)</b>	165

## Electric Motor (continued)

<b>Total Electric Motor Torque (N·m)</b>	350
<b>Front Electric Motor Max Power (kW)</b>	165
<b>Front Electric Motor Max Torque (N·m)</b>	350
<b>Number of drive motors</b>	Single motor
<b>Motor Layout</b>	Front-end
<b>Battery Type</b>	Lithium iron phosphate battery
<b>Battery Capacity (kWh)</b>	71.8
<b>Total Electric Motor Power (PS)</b>	224
<b>Battery Cell Brand</b>	AVIC Lithium Battery
<b>Battery Cooling System</b>	Liquid cooling
<b>Battery energy density (Wh/kg)</b>	141
<b>Power consumption per 100 kilometers (kWh/100km)</b>	15.3
<b>Fast charging function</b>	Support

## Screen/System

<b>Central control color screen</b>	<ul style="list-style-type: none"><li>• Touch LCD screen</li></ul>
<b>Infotainment Screen Size</b>	<ul style="list-style-type: none"><li>• 15.6 inches</li></ul>
<b>Bluetooth/In-car Phone</b>	<ul style="list-style-type: none"><li>•</li></ul>
<b>Voice recognition control system</b>	<ul style="list-style-type: none"><li>• Multimedia system;</li><li>• Navigation;</li><li>• Telephone;</li><li>• Air conditioning</li></ul>
<b>Facial Recognition</b>	<ul style="list-style-type: none"><li>•</li></ul>

## Body

<b>Length (mm)</b>	4650
<b>Width (mm)</b>	1920
<b>Height (mm)</b>	1720
<b>Wheelbase (mm)</b>	2830
<b>Front Track (mm)</b>	1630
<b>Rear Track (mm)</b>	1645
<b>Ground Clearance (Fully Loaded) (mm)</b>	150
<b>Door Opening Type</b>	swing door

## Body (continued)

<b>Number of Doors</b>	5
<b>Number of Seats</b>	5
<b>Trunk volume (L)</b>	405
<b>Drag Coefficient (Cd)</b>	-
<b>Approach Angle (°)</b>	18
<b>Departure Angle (°)</b>	22
<b>Minimum Turning Radius (m)</b>	6
<b>Maximum climbing grade (%)</b>	30
<b>Maximum climbing angle (°)</b>	16.7

## Gearbox

<b>Abbreviation</b>	Electric vehicle single speed gearbox
<b>Number of Gears</b>	1
<b>Transmission Type</b>	Fixed Gear Ratio Transmission

## Chassis steering

<b>Drive Type</b>	Front-engine, Front-wheel drive (FF)
<b>Front Suspension Type</b>	MacPherson independent suspension
<b>Rear Suspension Type</b>	Multi-link independent suspension
<b>Power Steering Type</b>	Electric power assistance
<b>Vehicle structure</b>	bearing type

## Seat Configuration

<b>Seat Material</b>	<ul style="list-style-type: none"><li>• Imitation leather</li></ul>
<b>Main seat adjustment</b>	<ul style="list-style-type: none"><li>• Front and rear adjustment;</li><li>• Backrest adjustment;</li><li>• Height adjustment (2-way);</li><li>• Lumbar support (2-way)</li></ul>
<b>Co-seat adjustment method</b>	<ul style="list-style-type: none"><li>• Front and rear adjustment;</li><li>• Backrest adjustment</li></ul>
<b>Electric adjustment of driver's seat and passenger seat</b>	Main •/Deputy •
<b>Front seat functions</b>	<ul style="list-style-type: none"><li>• Heating;</li><li>• Ventilation</li></ul>
<b>Electric seat memory function</b>	<ul style="list-style-type: none"><li>• Driving position</li></ul>

## Seat Configuration (continued)

<b>Front passenger seat rear adjustable buttons</b>	-
<b>Second row seat adjustment</b>	• Backrest adjustment
<b>Rear seat folding</b>	• Proportional down
<b>Front/rear center armrest</b>	Front •/Rear •
<b>Rear cup holder</b>	•

## Active safety

<b>Anti-lock Braking System (ABS)</b>	•
<b>Electronic Brakeforce Distribution (EBD/CBC)</b>	•
<b>Brake Assist System (EBA/BAS/BA)</b>	•
<b>Traction Control System (ASR/TCS/TRC)</b>	•
<b>Electronic Stability Control (ESC/ESP/DSC)</b>	•
<b>Tire Pressure Monitoring System (TPMS)</b>	• Tire pressure display
<b>Seat Belt Reminder</b>	• Full car
<b>ISOFIX Child Seat Anchors</b>	•
<b>Lane Departure Warning System (LDWS)</b>	•
<b>Autonomous Emergency Braking (AEB)</b>	•
<b>Driver Fatigue Detection</b>	•
<b>Forward Collision Warning (FCW)</b>	•
<b>Low Speed Alert</b>	•
<b>Emergency Call System (eCall)</b>	•
<b>Sentry Mode</b>	○

## Air conditioning/refrigerator

<b>Air conditioning temperature control method</b>	• Automatic air conditioning
<b>Rear Independent Climate Control</b>	-
<b>Rear seat air vents</b>	•

## Air conditioning/refrigerator (continued)

<b>Temperature zone control</b>	•
<b>Car air purifier</b>	•
<b>In-cabin PM2.5 Filter</b>	•
<b>Negative ion generator</b>	•
<b>Car fragrance device</b>	•
<b>Heat pump air conditioner</b>	•

## Passive safety

<b>Driver/passenger airbag</b>	Main •/Deputy •
<b>Front/rear side airbags</b>	Front •/Rear-
<b>Front/rear head airbags (curtain airbags)</b>	Front •/Rear •

## Wheel brake

<b>Front Brake Type</b>	Ventilation disc
<b>Rear Brake Type</b>	Disc
<b>Parking brake type</b>	Electronic Parking
<b>Front Tire Size</b>	235/55 R19
<b>Rear Tire Size</b>	235/55 R19
<b>Spare Tire Size</b>	None

## Audio/Interior Lighting

<b>Number of speakers</b>	• To be checked
<b>Touch reading light</b>	•

## Driving functions

<b>Navigation traffic information display</b>	•
<b>Lane assist</b>	-
<b>Lane Keeping Assist System</b>	•
<b>Cruise control system</b>	• Full speed adaptive cruise
<b>Satellite navigation system</b>	•
<b>Driving assistance level</b>	•L2
<b>Road traffic sign recognition</b>	•
<b>Map Brand</b>	• Baidu
<b>Remote Parking</b>	○
<b>Driver assistance systems</b>	•ADiGO

## Driving functions (continued)

High-precision map	○
AR real-time navigation	•
Parking Assist	○

## Exterior lighting

Low beam light source	•LED
High beam light source	•LED
LED daytime running lights	•
Adaptive high and low beam	•
Automatic headlights	•
Height-adjustable headlights	•
Headlight Delay Off	•

## Exterior mirrors

Exterior mirror function	• Electric adjustment; • Electric folding; • Mirror memory function; • Heated mirrors
--------------------------	---

## Appearance/anti-theft

Rim material	• Aluminum alloy
Electric trunk	•
Central locking system in the car	•
Key Type	• Remote key; • Bluetooth key
Keyless start system	•
Keyless entry function	• Front row
Electric trunk position memory	•
Roof rack	•
Battery preheating	•
Hidden electric door handle	•
Discharge to the outside	•

## Skylight/Glass

Sunroof Type	• Panoramic sunroof cannot be opened
Front/rear electric windows	Front •/Rear •

## Skylight/Glass (continued)

<b>One-touch window lifting function</b>	<ul style="list-style-type: none"><li>• Full car</li></ul>
<b>Window anti-pinch function</b>	<ul style="list-style-type: none"><li>•</li></ul>
<b>Car makeup mirror</b>	<ul style="list-style-type: none"><li>• Main driver's lamp; • co-pilot's lamp</li></ul>
<b>Rear wiper</b>	<ul style="list-style-type: none"><li>•</li></ul>
<b>Rain sensor wiper function</b>	<ul style="list-style-type: none"><li>• Rainfall-sensing</li></ul>

## Interior and exterior color

<b>Exterior Color</b>	Elegant Gray: #BEBEBE, Black, Holographic Silver:#000000/#DCDCDC, Free Grey:#969696, Tiffney Blue:#5AF0F0, Black, Tiffney Blue:#000000/#5AF0F0, Black, Phantom Purple:#000000/#DCB4DC, Black, Polar, White:#000000/#FFFFFF, Black, quantum, Red:#000000/#C42A2C, Black, Star Green:#000000/#C8E6C8; Magic Purple:#DCB4DC, Polar, White:#FFFFFF, Speed Silver:#AAAAAA, quantum, Red: #C42A2C; Holographic Silver: #D2D9DE; Starry Green: #C8E6C8; Night Shadow, Black:#000000
<b>Interior Color</b>	Black gray (Vitality Space), #000000/#BEBEBE, Orange gray (orange gray mirage), #E6C878/#BEBEBE, Black (Night of Competition), #000000

## Steering wheel/interior mirror

<b>Steering Wheel Material</b>	<ul style="list-style-type: none"><li>• Cortex</li></ul>
<b>Steering wheel position adjustment</b>	<ul style="list-style-type: none"><li>• Manual up and down front and rear adjustment</li></ul>
<b>Multi-function steering wheel</b>	<ul style="list-style-type: none"><li>•</li></ul>
<b>Heated Steering Wheel</b>	-
<b>Steering wheel memory</b>	-
<b>Trip computer display screen</b>	<ul style="list-style-type: none"><li>• Color</li></ul>
<b>Full LCD instrument panel</b>	<ul style="list-style-type: none"><li>•</li></ul>
<b>LCD instrument size</b>	<ul style="list-style-type: none"><li>• 12.3 inches</li></ul>
<b>Interior rearview mirror function</b>	<ul style="list-style-type: none"><li>• Manual anti-glare</li></ul>

## Steering wheel/interior mirror (continued)

<b>Gear shifting</b>	• Electronic knob shift
<b>ETC Device</b>	○

## Intelligent configuration

<b>Connected Car Services</b>	•
<b>OTA Updates</b>	•
<b>4G/5G Network</b>	•4G
<b>Mobile APP remote function</b>	• Door control, • Charging management, •Air conditioning control; •Seat heating, • Vehicle condition inquiry/diagnosis; • Vehicle location/vehicle search
<b>Wi-Fi hotspots</b>	•

## Driving Control

<b>Driving mode switch</b>	• Sport; • Economy; • Standard/Comfort
<b>Automatic parking</b>	•
<b>Steep slope descent</b>	•
<b>Hill start assist</b>	•
<b>Energy recovery system</b>	•

## Driving Hardware

<b>Front/rear parking radar</b>	Front ○/Rear •
<b>Driving Assistance Camera System</b>	• 360-degree panoramic image
<b>Transparent chassis/540-degree imaging</b>	○
<b>Number of cameras in the car</b>	• 1

## In-car charging

<b>Multimedia/charging port</b>	•USB
<b>Number of USB/Type-C ports</b>	• 2 in the First row/1 in the 2nd-row
<b>Mobile phone wireless charging function</b>	• Front row

---

"●" = Standard equipment

"□" = Not available

"○" = Optional equipment.

Note: These are Chinese market vehicles. Warranty coverage is not available outside of China.