

Vehicle Detail Report

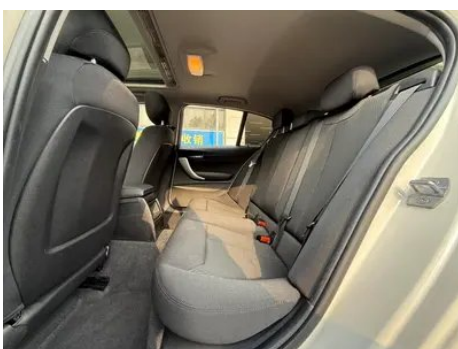
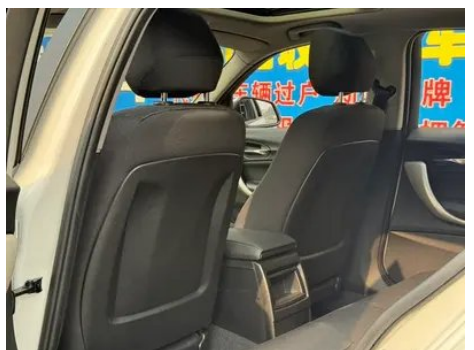
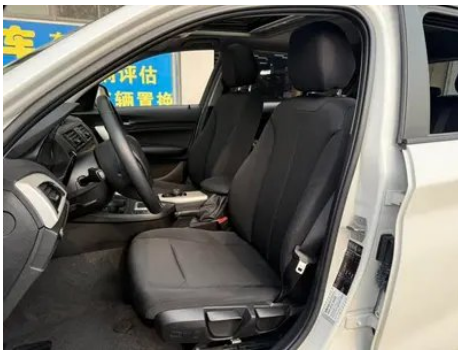
BMW 1 Series (Imported) 2013 Restyling 116i Leading Type

Basic Information

Brand	BMW
Mileage	70,000 km
Color	White
First Registration	2015-12-01
Transfer Count	0

Vehicle Images







Vehicle Condition

1. Left upper side rail, Paint repair. 2. Right upper side rail, Paint repair. 3. Left rear frame rail, Accessory cracking. 4. Left rear quarter panel, Paint repair, Body panel repair. 5. Right rear quarter panel, Paint repair, Body panel repair.

Configuration Information

Model Information

Model Name	BMW 1 Series (Imported) 2013 Restyling 116i Leading Type
Launch Date	2013.05

Basic parameters

Vehicle Class	compact car
Energy Type	Gasoline
Maximum Power (kW)	100
Maximum Torque (N·m)	220
Transmission	8-gear manual integration
Body Type	Hatchback
Engine	1.6T 136 horsepower L4
Dimensions (L×W×H) (mm)	4324*1765*1458
Official 0-100 km/h Acceleration (s)	8.7
Top Speed (km/h)	210
Curb Weight (kg)	1475
Maximum Gross Weight (kg)	-
NEDC Combined Fuel Consumption (L/100km)	6.3

engine

Engine Model	N13B16A
Displacement (mL)	1598
Displacement (L)	1.6
Induction Type	Turbocharging

engine (continued)

Cylinder Arrangement	L
Number of Cylinders	4
Valves per Cylinder	4
Compression Ratio	10.5
Valve Train	DOHC
Bore (mm)	77
Stroke (mm)	85.8
Maximum Power (PS)	136
Max Power Speed (rpm)	4400
Max Torque Speed (rpm)	1350-4300
Maximum net power (kW)	-
Fuel Grade	95.
Fuel Delivery System	Direct injection
Cylinder Head Material	Aluminum alloy
Cylinder Block Material	Aluminum alloy
Engine-specific technologies	Double VANOS/Valvetronic

Screen/System

Central control color screen	•
Bluetooth/In-car Phone	○
In-car CD/DVD Player	• Single disc CD

Body

Length (mm)	4324
Width (mm)	1765
Height (mm)	1458
Wheelbase (mm)	2690
Front Track (mm)	1535
Rear Track (mm)	1569
Door Opening Type	-
Number of Doors	5
Number of Seats	5
Fuel Tank Capacity (L)	52
Trunk volume (L)	-

Body (continued)

Drag Coefficient (Cd)	-
------------------------------	---

Gearbox

Abbreviation	8-gear manual integration
Number of Gears	8
Transmission Type	Automatic Transmission with Manual Mode (AT)

Chassis steering

Drive Type	Front-engine, Rear-wheel drive (FR)
Front Suspension Type	Dual-ball-joint MacPherson independent suspension
Rear Suspension Type	Multi-link independent suspension
Power Steering Type	Electric power assistance
Vehicle structure	bearing type

Seat Configuration

Seat Material	•Fabric; ○Genuine Leather
Main seat adjustment	• Front and rear adjustment; • Backrest adjustment; • Height adjustment (2-way);○ Height adjustment (4-way)
Co-seat adjustment method	• Front and rear adjustment; • Backrest adjustment
Electric adjustment of driver's seat and passenger seat	Main ○/Secondary ○
Front seat functions	○ Heating (USD 515)
Electric seat memory function	○
Front passenger seat rear adjustable buttons	-
Rear seat folding	• Proportional down
Front/rear center armrest	Front •/Rear-
Rear cup holder	-
Sports style seats	○

Active safety

Anti-lock Braking System (ABS)	•
Electronic Brakeforce Distribution (EBD/CBC)	•

Active safety (continued)

Brake Assist System (EBA/BAS/BA)	•
Traction Control System (ASR/TCS/TRC)	•
Electronic Stability Control (ESC/ESP/DSC)	•
Tire Pressure Monitoring System (TPMS)	•
Seat Belt Reminder	•
ISOFIX Child Seat Anchors	•
Lane Departure Warning System (LDWS)	○
Autonomous Emergency Braking (AEB)	-
Driver Fatigue Detection	-

Air conditioning/refrigerator

Air conditioning temperature control method	• Manual air conditioning; ○ Automatic air conditioning
Rear Independent Climate Control	-
Rear seat air vents	○
Temperature zone control	○
Car air purifier	-
In-cabin PM2.5 Filter	-

Passive safety

Driver/passenger airbag	Main •/Deputy •
Front/rear side airbags	Front •/Rear-
Front/rear head airbags (curtain airbags)	Front •/Rear •
Run-flat tires	•

Wheel brake

Front Brake Type	Ventilation disc
Rear Brake Type	Disc
Parking brake type	handbrake
Front Tire Size	205/55 R16
Rear Tire Size	205/55 R16
Spare Tire Size	None

Audio/Interior Lighting

Number of speakers	• 6-7 Horns
Interior ambient lighting	•

Driving functions

Navigation traffic information display	-
Lane assist	-
Lane Keeping Assist System	-
Cruise control system	<input type="radio"/> Cruise control
Satellite navigation system	<input type="radio"/>
Parking Assist	-

Exterior lighting

Low beam light source	• Halogen; <input type="radio"/> Xenon
High beam light source	• Halogen; <input type="radio"/> Xenon
LED daytime running lights	<input type="radio"/>
Adaptive high and low beam	-
Automatic headlights	•
Front fog lights	•
Height-adjustable headlights	<input type="radio"/>
Headlight Delay Off	-
Turn headlights	<input type="radio"/>
Headlight cleaning device	<input type="radio"/>

Exterior mirrors

Exterior mirror function	• Electric adjustment; <input type="radio"/> Mirror memory; • Mirror heating; <input type="radio"/> Automatic anti-glare
---------------------------------	--

Appearance/anti-theft

Rim material	• Aluminum alloy
Electric trunk	-
Electronic engine immobilizer	•
Central locking system in the car	•
Key Type	• Remote key

Appearance/anti-theft (continued)

Keyless start system	•
Keyless entry function	○

Skylight/Glass

Sunroof Type	• Electric sunroof
Front/rear electric windows	Front •/Rear •
Window anti-pinch function	•
Car makeup mirror	•
Rear wiper	•
Rain sensor wiper function	•

Interior and exterior color

Exterior Color	Snow mountain white:#FAFAFA; Midnight blue:#05526E; Ore white:#E7E7E7; Valencia orange:#FF660E; Gem green:#242224; Glacier silver:#949A9C; Black:#000000; Ore ash:#949A9C; Deep sea blue:#263756; Estolan:#143594
Interior Color	Black:#000000; Black/Inky Grey:#000000/#969696; Black/Pearl White:#000000/#EBDEEB

Steering wheel/interior mirror

Steering Wheel Material	• Cortex
Steering wheel position adjustment	• Manual up and down front and rear adjustment
Multi-function steering wheel	•
Heated Steering Wheel	-
Steering wheel memory	-
Trip computer display screen	•
Full LCD instrument panel	-
Interior rearview mirror function	○ Automatic anti-glare (USD 265)

Intelligent configuration

Connected Car Services	-
OTA Updates	-

Driving Control

Driving Control (continued)

Automatic parking	-
Engine start-stop technology	•

Driving Hardware

Front/rear parking radar	Front-/Rear •
Driving Assistance Camera System	○ Reversing image

In-car charging

Multimedia/charging port	•AUX
---------------------------------	------

"●" = Standard equipment

"-" = Not available

"○" = Optional equipment.

Note: These are Chinese market vehicles. Warranty coverage is not available outside of China.