

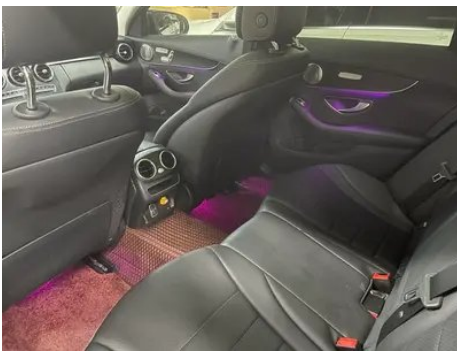
# Vehicle Detail Report

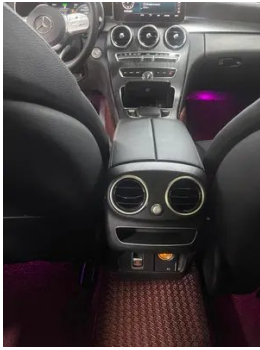
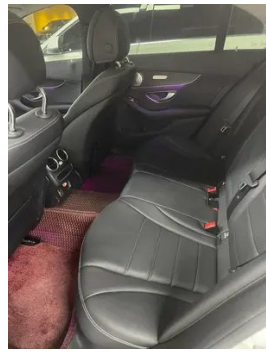
## Mercedes-Benz C-Class 2021 C 260 Xing Yao Zhen Tibetan Edition

### Basic Information

Brand	Mercedes-Benz
Mileage	32,000 km
Color	White
First Registration	2022-01-01
Transfer Count	0

### Vehicle Images







## Vehicle Condition

1. Driver's seat rails and frame, Signs of removal. 2. Front passenger seat rails and frame, Signs of removal. 3. Right rear quarter panel, Paint repair, Body panel repair.

## Configuration Information

### Model Information

<b>Model Name</b>	Mercedes-Benz C-Class 2021 C 260 Xing Yao Zhen Tibetan Edition
<b>Launch Date</b>	2020.09

### Basic parameters

<b>Vehicle Class</b>	Mid-size car
<b>Energy Type</b>	Gasoline + 48V Mild Hybrid System
<b>Maximum Power (kW)</b>	135
<b>Maximum Torque (N·m)</b>	280
<b>Transmission</b>	9-gear manual integration
<b>Body Type</b>	Sedan
<b>Engine</b>	1.5T 184 horsepower L4
<b>Dimensions (L×W×H) (mm)</b>	4704*1810*1454
<b>Official 0-100 km/h Acceleration (s)</b>	8.3
<b>Top Speed (km/h)</b>	236
<b>Curb Weight (kg)</b>	1620
<b>Maximum Gross Weight (kg)</b>	-
<b>NEDC Combined Fuel Consumption (L/100km)</b>	6.1

### engine

<b>Engine Model</b>	264 915
<b>Displacement (mL)</b>	1497
<b>Displacement (L)</b>	1.5
<b>Induction Type</b>	Turbocharging

## engine (continued)

<b>Cylinder Arrangement</b>	L
<b>Number of Cylinders</b>	4
<b>Valves per Cylinder</b>	4
<b>Valve Train</b>	DOHC
<b>Maximum Power (PS)</b>	184
<b>Max Power Speed (rpm)</b>	6100
<b>Max Torque Speed (rpm)</b>	3000-4000
<b>Maximum net power (kW)</b>	-
<b>Fuel Grade</b>	95.
<b>Fuel Delivery System</b>	Direct injection
<b>Cylinder Head Material</b>	Aluminum alloy
<b>Cylinder Block Material</b>	Aluminum alloy

## Screen/System

<b>Central control color screen</b>	<ul style="list-style-type: none"><li>• Ordinary LCD screen</li></ul>
<b>Infotainment Screen Size</b>	<ul style="list-style-type: none"><li>• 10.25 inches</li></ul>
<b>Bluetooth/In-car Phone</b>	<ul style="list-style-type: none"><li>•</li></ul>
<b>Smartphone Integration/Mirroring</b>	<ul style="list-style-type: none"><li>• Apple CarPlay support;</li><li>• Baidu CarLife support</li></ul>
<b>Voice recognition control system</b>	<ul style="list-style-type: none"><li>• Multimedia system;</li><li>○ Navigation;</li><li>• Telephone;</li><li>• Air conditioning</li></ul>

## Body

<b>Length (mm)</b>	4704
<b>Width (mm)</b>	1810
<b>Height (mm)</b>	1454
<b>Wheelbase (mm)</b>	2840
<b>Front Track (mm)</b>	1574
<b>Rear Track (mm)</b>	1540
<b>Door Opening Type</b>	-
<b>Number of Doors</b>	4
<b>Number of Seats</b>	5
<b>Fuel Tank Capacity (L)</b>	66
<b>Trunk volume (L)</b>	-
<b>Drag Coefficient (Cd)</b>	-

## Gearbox

## Gearbox (continued)

<b>Abbreviation</b>	9-gear manual integration
<b>Number of Gears</b>	9
<b>Transmission Type</b>	Automatic Transmission with Manual Mode (AT)

## Chassis steering

<b>Drive Type</b>	Front-engine, Rear-wheel drive (FR)
<b>Front Suspension Type</b>	Multi-link independent suspension
<b>Rear Suspension Type</b>	Multi-link independent suspension
<b>Power Steering Type</b>	Electric power assistance
<b>Vehicle structure</b>	bearing type

## Seat Configuration

<b>Seat Material</b>	<ul style="list-style-type: none"><li>• Imitation leather</li></ul>
<b>Main seat adjustment</b>	<ul style="list-style-type: none"><li>• Front and rear adjustment;</li><li>• Backrest adjustment;</li><li>• Height adjustment (4-way);</li><li>• Leg rest adjustment;</li><li>• Lumbar support (4-way)</li></ul>
<b>Co-seat adjustment method</b>	<ul style="list-style-type: none"><li>• Front and rear adjustment;</li><li>• Backrest adjustment;</li><li>• Height adjustment (4-way);</li><li>• Leg rest adjustment;</li><li>• Lumbar support (4-way)</li></ul>
<b>Electric adjustment of driver's seat and passenger seat</b>	Main •/Deputy •
<b>Front passenger seat rear adjustable buttons</b>	-
<b>Front/rear center armrest</b>	Front •/Rear •
<b>Rear cup holder</b>	<ul style="list-style-type: none"><li>•</li></ul>

## Active safety

<b>Anti-lock Braking System (ABS)</b>	<ul style="list-style-type: none"><li>•</li></ul>
<b>Electronic Brakeforce Distribution (EBD/CBC)</b>	<ul style="list-style-type: none"><li>•</li></ul>
<b>Brake Assist System (EBA/BAS/BA)</b>	<ul style="list-style-type: none"><li>•</li></ul>
<b>Traction Control System (ASR/TCS/TRC)</b>	<ul style="list-style-type: none"><li>•</li></ul>
<b>Electronic Stability Control (ESC/ESP/DSC)</b>	<ul style="list-style-type: none"><li>•</li></ul>

## Active safety (continued)

<b>Tire Pressure Monitoring System (TPMS)</b>	• Tire pressure display
<b>Seat Belt Reminder</b>	• Front row
<b>ISOFIX Child Seat Anchors</b>	•
<b>Lane Departure Warning System (LDWS)</b>	-
<b>Autonomous Emergency Braking (AEB)</b>	•
<b>Driver Fatigue Detection</b>	•
<b>Emergency Call System (eCall)</b>	•

## Air conditioning/refrigerator

<b>Air conditioning temperature control method</b>	• Automatic air conditioning
<b>Rear Independent Climate Control</b>	-
<b>Rear seat air vents</b>	•
<b>Temperature zone control</b>	•
<b>Car air purifier</b>	-
<b>In-cabin PM2.5 Filter</b>	•

## Passive safety

<b>Driver/passenger airbag</b>	Main •/Deputy •
<b>Front/rear side airbags</b>	Front •/Rear ○ Rear side airbags (USD 456)
<b>Front/rear head airbags (curtain airbags)</b>	Front •/Rear •
<b>Run-flat tires</b>	•
<b>Knee airbag</b>	• Driver's knee airbag
<b>Passive pedestrian protection</b>	•

## Wheel brake

<b>Front Brake Type</b>	Ventilation disc
<b>Rear Brake Type</b>	Disc
<b>Parking brake type</b>	Electronic Parking
<b>Front Tire Size</b>	225/45 R18
<b>Rear Tire Size</b>	245/40 R18
<b>Spare Tire Size</b>	None

## Audio/Interior Lighting

<b>Speaker Brand Name</b>	• Burmester Voices of Berlin
<b>Number of speakers</b>	• 13 speakers
<b>Interior ambient lighting</b>	• 64 colors

## Driving functions

<b>Navigation traffic information display</b>	<input type="radio"/>
<b>Lane assist</b>	<input type="radio"/>
<b>Lane Keeping Assist System</b>	-
<b>Cruise control system</b>	• Cruise control
<b>Satellite navigation system</b>	<input type="radio"/>
<b>Parking Assist</b>	•

## Exterior lighting

<b>Low beam light source</b>	• LED
<b>High beam light source</b>	• LED
<b>LED daytime running lights</b>	•
<b>Adaptive high and low beam</b>	-
<b>Automatic headlights</b>	•
<b>Height-adjustable headlights</b>	•
<b>Headlight Delay Off</b>	•

## Exterior mirrors

<b>Exterior mirror function</b>	• Electric adjustment; • Electric folding; • Heated mirrors; • Automatic folding when locking the car; <input type="radio"/> Auto-dimming
---------------------------------	---

## Appearance/anti-theft

<b>Rim material</b>	• Aluminum alloy
<b>Electric trunk</b>	•
<b>Electronic engine immobilizer</b>	•
<b>Central locking system in the car</b>	•
<b>Key Type</b>	• Remote key
<b>Keyless start system</b>	•
<b>Appearance Kit</b>	• Sports style

## Appearance/anti-theft (continued)

<b>Hands-free Trunk</b>	○
<b>Remote start function</b>	•

## Skylight/Glass

<b>Sunroof Type</b>	• Electric sunroof
<b>Front/rear electric windows</b>	Front •/Rear •
<b>One-touch window lifting function</b>	• Full vehicle
<b>Window anti-pinch function</b>	•
<b>Car makeup mirror</b>	• Main driver's lamp; • co-pilot's lamp
<b>Rear wiper</b>	-
<b>Rain sensor wiper function</b>	• Rainfall-sensing
<b>Rear side privacy glass</b>	•

## Interior and exterior color

<b>Exterior Color</b>	Arctic White #F4F4F4 Grandmother Stone Green #143C28 Gem blue #0D2C95 Hao Sha Yin #D7DCDC water silica alcalite blue #0C0D32 charcoal gray blue #464C64 obsidian black #000000 Iridium Silver #D7DBE9 Moonlight Lime #566262 zircon quartz red #B00D15
<b>Interior Color</b>	Black Mumberry Red #000000 #962A31 Black #000000 Black Silk Beige #000000 #C7BDB3 Coffee brown Silk Beige #231E1B #C7BDB3 magma gray Black #323232 #000000

## Steering wheel/interior mirror

<b>Steering Wheel Material</b>	• Leather
<b>Steering wheel position adjustment</b>	• Manual up and down front and rear adjustment
<b>Multi-function steering wheel</b>	•
<b>Heated Steering Wheel</b>	-
<b>Steering wheel memory</b>	-
<b>Trip computer display screen</b>	• Color
<b>Full LCD instrument panel</b>	•

## Steering wheel/interior mirror (continued)

<b>LCD instrument size</b>	• 12.3 inches
<b>Interior rearview mirror function</b>	• Manual anti-glare; ○ Automatic anti-glare
<b>Steering Wheel Shift Paddles</b>	•

## Intelligent configuration

<b>Connected Car Services</b>	•
<b>OTA Updates</b>	-

## Driving Control

<b>Driving mode switch</b>	• Sport; • Economy; • Standard/Comfort
<b>Automatic parking</b>	•
<b>Hill start assist</b>	•
<b>Variable steering ratio</b>	•
<b>Engine start-stop technology</b>	•

## Driving Hardware

<b>Front/rear parking radar</b>	Front •/Rear •
<b>Driving Assistance Camera System</b>	• Reversing image

## In-car charging

<b>Multimedia/charging port</b>	•USB;•SD
<b>Number of USB/Type-C ports</b>	• 2 in the First row/1 in the 2nd-row

---

"●" = Standard equipment

"-" = Not available

"○" = Optional equipment.

Note: These are Chinese market vehicles. Warranty coverage is not available outside of China.