

# Vehicle Detail Report

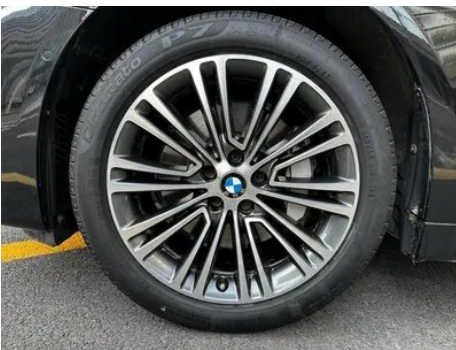
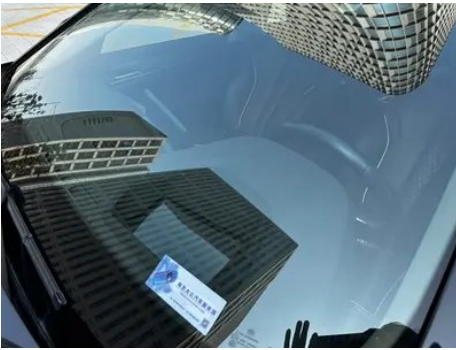
## BMW 5 Series 2018 Restyling 530Li Premium Class Luxury Set

### Basic Information

Brand	BMW
Mileage	105,000 km
Color	Black
First Registration	2018-08-01
Transfer Count	1

### Vehicle Images







## Vehicle Condition

1. Original metal body panels with factory paint.

## Configuration Information

### Model Information

<b>Model Name</b>	BMW 5 Series 2018 Restyling 530Li Premium Class Luxury Set
<b>Launch Date</b>	2018.02

### Basic parameters

<b>Vehicle Class</b>	Mid-size and large cars
<b>Energy Type</b>	Gasoline
<b>Maximum Power (kW)</b>	185
<b>Maximum Torque (N·m)</b>	350
<b>Transmission</b>	8-gear manual integration
<b>Body Type</b>	Sedan
<b>Engine</b>	2.0L 252 hp L4
<b>Dimensions (L×W×H) (mm)</b>	5087*1868*1500
<b>Official 0-100 km/h Acceleration (s)</b>	6.9
<b>Top Speed (km/h)</b>	250
<b>Curb Weight (kg)</b>	1710
<b>Maximum Gross Weight (kg)</b>	-
<b>NEDC Combined Fuel Consumption (L/100km)</b>	6.5

### engine

<b>Engine Model</b>	B48B20D
<b>Displacement (mL)</b>	1998
<b>Displacement (L)</b>	2.0
<b>Induction Type</b>	Turbocharging
<b>Cylinder Arrangement</b>	L

## engine (continued)

<b>Number of Cylinders</b>	4
<b>Valves per Cylinder</b>	4
<b>Valve Train</b>	DOHC
<b>Maximum Power (PS)</b>	252
<b>Max Power Speed (rpm)</b>	5200-6500
<b>Max Torque Speed (rpm)</b>	1450-4800
<b>Maximum net power (kW)</b>	-
<b>Fuel Grade</b>	95.
<b>Fuel Delivery System</b>	Direct injection
<b>Cylinder Head Material</b>	Aluminum alloy
<b>Cylinder Block Material</b>	Aluminum alloy

## Screen/System

<b>Central control color screen</b>	<ul style="list-style-type: none"><li>• Touch LCD screen</li></ul>
<b>Infotainment Screen Size</b>	<ul style="list-style-type: none"><li>• 10.25 inches</li></ul>
<b>Bluetooth/In-car Phone</b>	<ul style="list-style-type: none"><li>•</li></ul>
<b>Smartphone Integration/Mirroring</b>	<ul style="list-style-type: none"><li>• Apple CarPlay support</li></ul>
<b>Voice recognition control system</b>	<ul style="list-style-type: none"><li>• Multimedia system;</li><li>• Navigation;</li><li>• Telephone</li></ul>
<b>In-car CD/DVD Player</b>	<ul style="list-style-type: none"><li>• Single disc CD</li></ul>
<b>Rear multimedia control</b>	<ul style="list-style-type: none"><li>•</li></ul>
<b>Gesture Control</b>	○(USD 368)

## Body

<b>Length (mm)</b>	5087
<b>Width (mm)</b>	1868
<b>Height (mm)</b>	1500
<b>Wheelbase (mm)</b>	3108
<b>Front Track (mm)</b>	-
<b>Rear Track (mm)</b>	-
<b>Door Opening Type</b>	-
<b>Number of Doors</b>	4
<b>Number of Seats</b>	5
<b>Fuel Tank Capacity (L)</b>	68
<b>Trunk volume (L)</b>	-

## Body (continued)

<b>Drag Coefficient (Cd)</b>	-
------------------------------	---

## Gearbox

<b>Abbreviation</b>	8-gear manual integration
<b>Number of Gears</b>	8
<b>Transmission Type</b>	Automatic Transmission with Manual Mode (AT)

## Chassis steering

<b>Drive Type</b>	Front-engine, Rear-wheel drive (FR)
<b>Front Suspension Type</b>	Double wishbone independent suspension
<b>Rear Suspension Type</b>	Multi-link independent suspension
<b>Power Steering Type</b>	Electric power assistance
<b>Vehicle structure</b>	bearing type

## Seat Configuration

<b>Seat Material</b>	• Leather
<b>Main seat adjustment</b>	• Front and rear adjustment; • Backrest adjustment; • Height adjustment (4-way);○ Lumbar support (4-way)
<b>Co-seat adjustment method</b>	• Front and rear adjustment; • Backrest adjustment; • Height adjustment (4-way);○ Lumbar support (4-way)
<b>Electric adjustment of driver's seat and passenger seat</b>	Main •/Deputy •
<b>Front seat functions</b>	• Heating; ○ Ventilation (USD 971)
<b>Electric seat memory function</b>	• Driving position
<b>Front passenger seat rear adjustable buttons</b>	•
<b>Second row seat adjustment</b>	• Backrest adjustment
<b>Front/rear center armrest</b>	Front •/Rear •
<b>Rear cup holder</b>	•
<b>Second row seat functions</b>	○ Heating; ○ Ventilation (USD 912)
<b>Second row seats electrically adjustable</b>	•

## Active safety

## Active safety (continued)

<b>Anti-lock Braking System (ABS)</b>	•
<b>Electronic Brakeforce Distribution (EBD/CBC)</b>	•
<b>Brake Assist System (EBA/BAS/BA)</b>	•
<b>Traction Control System (ASR/TCS/TRC)</b>	•
<b>Electronic Stability Control (ESC/ESP/DSC)</b>	•
<b>Tire Pressure Monitoring System (TPMS)</b>	• Tire pressure alarm
<b>Seat Belt Reminder</b>	• Front row
<b>ISOFIX Child Seat Anchors</b>	•
<b>Lane Departure Warning System (LDWS)</b>	○
<b>Autonomous Emergency Braking (AEB)</b>	○
<b>Driver Fatigue Detection</b>	•
<b>Emergency Call System (eCall)</b>	•

## Air conditioning/refrigerator

<b>Air conditioning temperature control method</b>	• Automatic air conditioning
<b>Rear Independent Climate Control</b>	•
<b>Rear seat air vents</b>	•
<b>Temperature zone control</b>	•
<b>Car air purifier</b>	-
<b>In-cabin PM2.5 Filter</b>	-
<b>Negative ion generator</b>	○
<b>Car fragrance device</b>	○

## Passive safety

<b>Driver/passenger airbag</b>	Main •/Deputy •
<b>Front/rear side airbags</b>	Front •/Rear-
<b>Front/rear head airbags (curtain airbags)</b>	Front •/Rear •
<b>Run-flat tires</b>	•

## Passive safety (continued)

<b>Passive pedestrian protection</b>	<ul style="list-style-type: none"><li>•</li></ul>
--------------------------------------	---

## Wheel brake

<b>Front Brake Type</b>	Ventilation disc
<b>Rear Brake Type</b>	Ventilation disc
<b>Parking brake type</b>	Electronic Parking
<b>Front Tire Size</b>	245/45 R18
<b>Rear Tire Size</b>	245/45 R18
<b>Spare Tire Size</b>	None

## Audio/Interior Lighting

<b>Speaker Brand Name</b>	<ul style="list-style-type: none"><li>•Harman/Kardon; ○Bowers &amp; Wilkins (USD 4,794)</li></ul>
<b>Number of speakers</b>	<ul style="list-style-type: none"><li>• <math>\geq 12</math> horns</li></ul>
<b>Interior ambient lighting</b>	<ul style="list-style-type: none"><li>• 11 colors</li></ul>

## Driving functions

<b>Navigation traffic information display</b>	<ul style="list-style-type: none"><li>•</li></ul>
<b>Lane assist</b>	○
<b>Lane Keeping Assist System</b>	○
<b>Cruise control system</b>	<ul style="list-style-type: none"><li>• Cruise control; ○ Adaptive cruise control; ○ Full-speed adaptive cruise control</li></ul>
<b>Satellite navigation system</b>	<ul style="list-style-type: none"><li>•</li></ul>
<b>Parking Assist</b>	<ul style="list-style-type: none"><li>•</li></ul>

## Exterior lighting

<b>Low beam light source</b>	<ul style="list-style-type: none"><li>•LED</li></ul>
<b>High beam light source</b>	<ul style="list-style-type: none"><li>•LED</li></ul>
<b>LED daytime running lights</b>	<ul style="list-style-type: none"><li>•</li></ul>
<b>Adaptive high and low beam</b>	<ul style="list-style-type: none"><li>•</li></ul>
<b>Automatic headlights</b>	<ul style="list-style-type: none"><li>•</li></ul>
<b>Front fog lights</b>	<ul style="list-style-type: none"><li>•LED</li></ul>
<b>Height-adjustable headlights</b>	<ul style="list-style-type: none"><li>•</li></ul>
<b>Headlight Delay Off</b>	<ul style="list-style-type: none"><li>•</li></ul>

## Exterior lighting (continued)

Turn headlights	•
Turn signal lamp	•

## Exterior mirrors

Exterior mirror function	• Electric adjustment; • Electric folding; • Rearview mirror memory; • Rearview mirror heating; • Automatic downturning when reversing; • Automatic folding when locked; • Automatic anti-glare
--------------------------	---

## Appearance/anti-theft

Rim material	• Aluminum alloy
Electric trunk	•
Electronic engine immobilizer	•
Central locking system in the car	•
Key Type	• Remote key
Keyless start system	•
Keyless entry function	• Full vehicle
Hands-free Trunk	○
Active closed grille	•

## Skylight/Glass

Sunroof Type	• Sectional electric sunroof
Front/rear electric windows	Front •/Rear •
One-touch window lifting function	• Full vehicle
Window anti-pinch function	•
Rear windshield sunshade	○
Car makeup mirror	• Driver's side ambient light; • Passenger-side ambient light; • Rear-row ambient light
Rear wiper	-
Rain sensor wiper function	• Rainfall-sensing
Rear side window sunshades	○ Electric

## Interior and exterior color

## Interior and exterior color (continued)

<b>Exterior Color</b>	Ore White #E7E7E7 Brazil Brown #45403D Gem Green #242224 Burgundy red #600001 Platinum Silver #605F57 Hookaro beige #A6988C cashmi silver #C6C1B4 Snow Mountain White #FAFAFA Moonlight Silver #D8CAB4
<b>Interior Color</b>	Black/Mocha: #000000/#423534; Black: #000000; Black/Cognac: #000000/#78593D; Black/Ivory: #000000/#DEDEDE

## Steering wheel/interior mirror

<b>Steering Wheel Material</b>	<ul style="list-style-type: none"><li>• Leather</li></ul>
<b>Steering wheel position adjustment</b>	<ul style="list-style-type: none"><li>• Electric up and down front and rear adjustment</li></ul>
<b>Multi-function steering wheel</b>	<ul style="list-style-type: none"><li>•</li></ul>
<b>Heated Steering Wheel</b>	-
<b>Steering wheel memory</b>	<ul style="list-style-type: none"><li>•</li></ul>
<b>Trip computer display screen</b>	<ul style="list-style-type: none"><li>• Color</li></ul>
<b>Full LCD instrument panel</b>	<ul style="list-style-type: none"><li>•</li></ul>
<b>LCD instrument size</b>	<ul style="list-style-type: none"><li>• 12.3 inches</li></ul>
<b>Interior rearview mirror function</b>	<ul style="list-style-type: none"><li>• Automatic anti-glare</li></ul>
<b>HUD Head Up Digital Display</b>	<ul style="list-style-type: none"><li>•</li></ul>
<b>Steering Wheel Shift Paddles</b>	<ul style="list-style-type: none"><li>•</li></ul>

## Intelligent configuration

<b>Connected Car Services</b>	<ul style="list-style-type: none"><li>•</li></ul>
<b>OTA Updates</b>	-

## Driving Control

<b>Driving mode switch</b>	<ul style="list-style-type: none"><li>• Sport; • Economy; • Standard/Comfort</li></ul>
<b>Automatic parking</b>	<ul style="list-style-type: none"><li>•</li></ul>
<b>Hill start assist</b>	<ul style="list-style-type: none"><li>•</li></ul>
<b>Engine start-stop technology</b>	<ul style="list-style-type: none"><li>•</li></ul>

## Driving Hardware

<b>Front/rear parking radar</b>	Front •/Rear •
---------------------------------	----------------

## Driving Hardware (continued)

<b>Driving Assistance Camera System</b>	• 360-degree panoramic image
---	------------------------------

## In-car charging

<b>Multimedia/charging port</b>	• USB
<b>Number of USB/Type-C ports</b>	• 2 in the front row
<b>Mobile phone wireless charging function</b>	○ Front row

## Optional Package

<b>Optional Package</b>	Winter package (USD 441; Including: front and rear seat heating functions); Entertainment package (USD 735; Including: mobile phone wireless charging, WiFi hotspot and free WiFi data packet)
-------------------------	--

---

"●" = Standard equipment

"-" = Not available

"○" = Optional equipment.

Note: These are Chinese market vehicles. Warranty coverage is not available outside of China.