

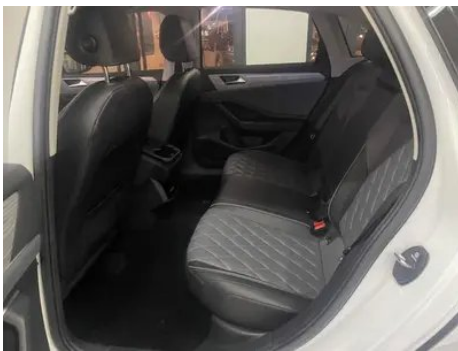
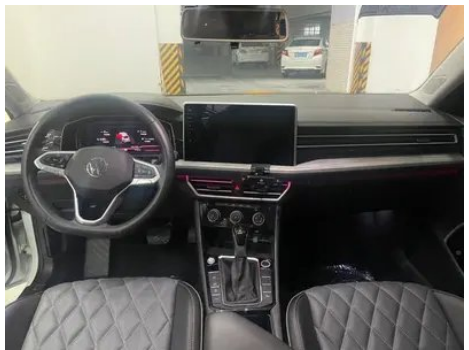
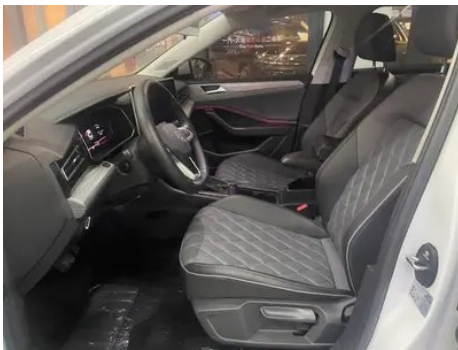
Vehicle Detail Report

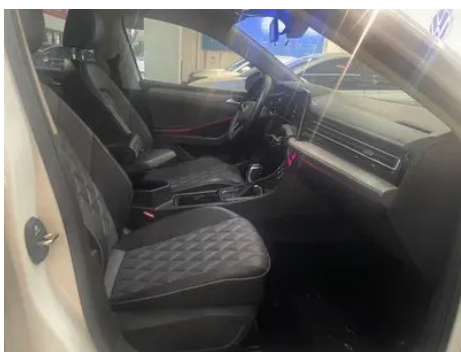
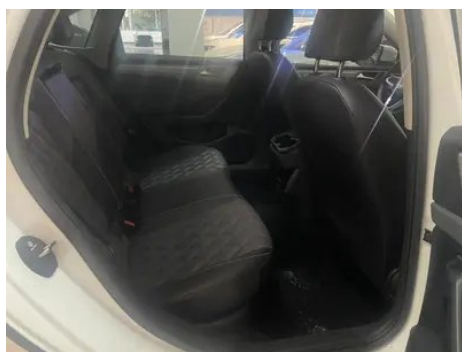
Volkswagen Sagitar 2023 300TSI DSG Premium Edition

Basic Information

Brand	Volkswagen
Mileage	33,000 km
Color	White
First Registration	2023-05-01
Transfer Count	1

Vehicle Images





Vehicle Condition

1. Left rocker panel, Scratch damage. 2. Inner side of left C-pillar, Scratch. 3. Spare wheel well, Soiling. 4. Headliner, Soiling. 5. Headliner, Soiling. 6. Body floor pan, Aftermarket underbody coating.

Configuration Information

Model Information

Model Name	Sagitar 2023 300TSI DSG Superior Edition
Launch Date	2022.10

Basic parameters

Vehicle Class	compact car
Energy Type	Gasoline
Maximum Power (kW)	118

Basic parameters (continued)

Maximum Torque (N·m)	250
Transmission	7-speed dry dual clutch
Body Type	Sedan
Engine	1.5T 160 horsepower L4
Dimensions (L×W×H) (mm)	4791*1801*1465
Official 0-100 km/h Acceleration (s)	8.8
Top Speed (km/h)	200
Curb Weight (kg)	1418
Maximum Gross Weight (kg)	1890
WLTP Combined Fuel Consumption (L/100km)	5.77

engine

Engine Model	EA211-DSV
Displacement (mL)	1498
Displacement (L)	1.5
Induction Type	Turbocharging
Cylinder Arrangement	L
Number of Cylinders	4
Valves per Cylinder	4
Valve Train	DOHC
Maximum Power (PS)	160
Max Power Speed (rpm)	5500
Max Torque Speed (rpm)	1750-4000
Maximum net power (kW)	118
Fuel Grade	95.
Fuel Delivery System	Direct injection
Cylinder Head Material	Aluminum alloy
Cylinder Block Material	Aluminum alloy
Engine layout	Horizontal
Engine-specific technologies	Miller cycle

Screen/System

Screen/System (continued)

Central control color screen	<ul style="list-style-type: none">• Touch LCD screen
Infotainment Screen Size	<ul style="list-style-type: none">• 12 inches
Bluetooth/In-car Phone	<ul style="list-style-type: none">•
Smartphone Integration/Mirroring	<ul style="list-style-type: none">• Support CarPlay; • Support CarLife
Voice recognition control system	<ul style="list-style-type: none">• Multimedia system; • Navigation; • Telephone; • Air conditioning

Body

Length (mm)	4791
Width (mm)	1801
Height (mm)	1465
Wheelbase (mm)	2731
Front Track (mm)	1543
Rear Track (mm)	1546
Door Opening Type	swing door
Number of Doors	4
Number of Seats	5
Fuel Tank Capacity (L)	50
Trunk volume (L)	553
Drag Coefficient (Cd)	-
Approach Angle (°)	16
Departure Angle (°)	14

Gearbox

Abbreviation	7-speed dry dual clutch
Number of Gears	7
Transmission Type	Dry Dual-Clutch Transmission (DCT)

Chassis steering

Drive Type	Front-engine, Front-wheel drive (FF)
Front Suspension Type	MacPherson independent suspension
Rear Suspension Type	Multi-link independent suspension
Power Steering Type	Electric power assistance
Vehicle structure	bearing type

Seat Configuration

Seat Material	<ul style="list-style-type: none">• Imitation leather
----------------------	---

Seat Configuration (continued)

Main seat adjustment	<ul style="list-style-type: none">• Front and rear adjustment;• Backrest adjustment;• Height adjustment (2-way)
Co-seat adjustment method	<ul style="list-style-type: none">• Front and rear adjustment;• Backrest adjustment
Electric adjustment of driver's seat and passenger seat	-
Front seat functions	○ Heating (USD 147)
Front passenger seat rear adjustable buttons	-
Rear seat folding	<ul style="list-style-type: none">• Proportional down
Front/rear center armrest	Front •/Rear •
Rear cup holder	<ul style="list-style-type: none">•

Active safety

Anti-lock Braking System (ABS)	<ul style="list-style-type: none">•
Electronic Brakeforce Distribution (EBD/CBC)	<ul style="list-style-type: none">•
Brake Assist System (EBA/BAS/BA)	<ul style="list-style-type: none">•
Traction Control System (ASR/TCS/TRC)	<ul style="list-style-type: none">•
Electronic Stability Control (ESC/ESP/DSC)	<ul style="list-style-type: none">•
Tire Pressure Monitoring System (TPMS)	<ul style="list-style-type: none">• Tire pressure alarm
Seat Belt Reminder	<ul style="list-style-type: none">• Full car
ISOFIX Child Seat Anchors	<ul style="list-style-type: none">•
Lane Departure Warning System (LDWS)	<ul style="list-style-type: none">•
Autonomous Emergency Braking (AEB)	<ul style="list-style-type: none">•
Driver Fatigue Detection	-
Forward Collision Warning (FCW)	<ul style="list-style-type: none">•

Air conditioning/refrigerator

Air conditioning temperature control method	<ul style="list-style-type: none">• Manual air conditioning;○ Automatic air conditioning
--	---

Air conditioning/refrigerator (continued)

Rear Independent Climate Control	-
Rear seat air vents	•
Temperature zone control	○
Car air purifier	○
In-cabin PM2.5 Filter	○

Passive safety

Driver/passenger airbag	Main •/Deputy •
Front/rear side airbags	Front •/Rear-
Front/rear head airbags (curtain airbags)	Front •/Rear •

Wheel brake

Front Brake Type	Ventilation disc
Rear Brake Type	Disc
Parking brake type	Electronic Parking
Front Tire Size	205/55 R17
Rear Tire Size	205/55 R17
Spare Tire Size	Not full-size

Audio/Interior Lighting

Number of speakers	• 6 speakers
Interior ambient lighting	• 10 colors

Driving functions

Navigation traffic information display	•
Lane assist	-
Lane Keeping Assist System	•
Cruise control system	• Cruise control
Satellite navigation system	•
Road traffic sign recognition	•
Parking Assist	-

Exterior lighting

Low beam light source	•LED
High beam light source	•LED

Exterior lighting (continued)

LED daytime running lights	•
Adaptive high and low beam	-
Automatic headlights	•
Height-adjustable headlights	•
Headlight Delay Off	•
Headlight rain and fog mode	•
Turn signal lamp	•

Exterior mirrors

Exterior mirror function	•Electric adjustment; •Electric folding; •Rearview mirror heating; •Automatically turn down when reversing; •Automatically fold when locking the car
---------------------------------	--

Appearance/anti-theft

Rim material	• Aluminum alloy
Electric trunk	-
Electronic engine immobilizer	•
Central locking system in the car	•
Key Type	• Remote key
Keyless start system	•
Keyless entry function	• Front row
Hands-free Trunk	○(USD 74)

Skylight/Glass

Sunroof Type	• Openable panoramic sunroof
Front/rear electric windows	Front •/Rear •
One-touch window lifting function	• Full car
Window anti-pinch function	•
Car makeup mirror	• Main driver's lamp; • co-pilot's lamp
Rear wiper	-

Skylight/Glass (continued)

Rain sensor wiper function	<input type="radio"/> Rainfall-sensing
-----------------------------------	--

Interior and exterior color

Exterior Color	Pearlescent white:#FFFFFF; Haibei gold:#C8AA96; Manganese stone black:#010101; Crystal silver:#ABB0B3; Xinghan Blue:#0B6FE1; Polar white:#FFFFFF
Interior Color	Black/Grey:#000000/#6D7F85; Black:#252B2A; Black/Brown:#252B2A/#925140

Steering wheel/interior mirror

Steering Wheel Material	<ul style="list-style-type: none">• Cortex
Steering wheel position adjustment	<ul style="list-style-type: none">• Manual up and down front and rear adjustment
Multi-function steering wheel	<ul style="list-style-type: none">•
Heated Steering Wheel	-
Steering wheel memory	-
Trip computer display screen	<ul style="list-style-type: none">• Color
Full LCD instrument panel	<input type="radio"/> (USD 88)
LCD instrument size	<ul style="list-style-type: none">• 8 inches; <input type="radio"/> 10.25 inches
Interior rearview mirror function	<ul style="list-style-type: none">• Manual anti-glare; <input type="radio"/> Automatic anti-glare
Gear shifting	<ul style="list-style-type: none">• Mechanical gear shift
ETC Device	<input type="radio"/> (USD 74)

Intelligent configuration

Connected Car Services	<ul style="list-style-type: none">•
OTA Updates	-
4G/5G Network	<ul style="list-style-type: none">•4G
Mobile APP remote function	<ul style="list-style-type: none">•

Driving Control

Driving mode switch	<ul style="list-style-type: none">• Movement; • Economy
Automatic parking	<ul style="list-style-type: none">•
Hill start assist	<ul style="list-style-type: none">•
Energy recovery system	<ul style="list-style-type: none">•

Driving Control (continued)

Engine start-stop technology	•
-------------------------------------	---

Driving Hardware

Front/rear parking radar	Front •/Rear •
Driving Assistance Camera System	• Reversing image

In-car charging

Multimedia/charging port	•USB;•Type-C
Number of USB/Type-C ports	• 3 in the front row/2 in the back row

Optional Package

Optional Package	Optional package 6(USD 74; Including: ETC); Optional package 7(USD 147; Including: 10.25-inch Active Info Display full LCD digital instrument); Winter package (USD 221; Including: front seat heating can be adjusted separately); Optional package 1(USD 294; Including: 18-inch aluminum alloy wheel hub)
-------------------------	--

"●" = Standard equipment

"_" = Not available

"○" = Optional equipment.

Note: These are Chinese market vehicles. Warranty coverage is not available outside of China.