

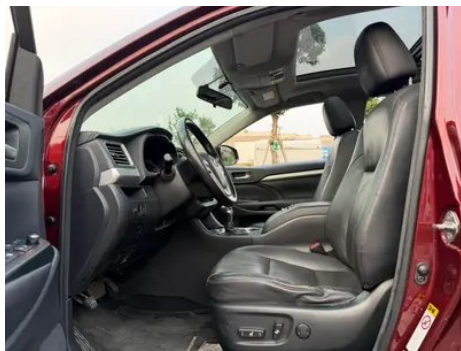
Vehicle Detail Report

Toyota Highlander 2015 2.0T Two-wheel drive
luxury edition 7 seat

Basic Information

Brand	Toyota
Mileage	95,000 km
Color	Red
First Registration	2015-06-01
Transfer Count	0

Vehicle Images





Vehicle Condition

1. Radiator support, Signs of removal.
2. Inner side of right C-pillar, Scratch.
3. Left rear quarter panel, Scratch.

Configuration Information

Model Information

Model Name	Toyota Highlander 2015 2.0T Two-wheel drive luxury edition 7 seat
Launch Date	2015.03

Basic parameters

Vehicle Class	Mid-size SUV
Energy Type	Gasoline
Maximum Power (kW)	162

Basic parameters (continued)

Maximum Torque (N·m)	350
Transmission	6-speed manual integration
Body Type	SUV
Engine	2.0T 220 horsepower L4
Dimensions (L×W×H) (mm)	4855*1925*1720
Official 0-100 km/h Acceleration (s)	-
Top Speed (km/h)	-
Curb Weight (kg)	1990
Maximum Gross Weight (kg)	-
NEDC Combined Fuel Consumption (L/100km)	8.3

engine

Engine Model	8AR-FTS
Displacement (mL)	1998
Displacement (L)	2.0
Induction Type	Turbocharging
Cylinder Arrangement	L
Number of Cylinders	4
Valves per Cylinder	4
Compression Ratio	10
Valve Train	DOHC
Bore (mm)	86
Stroke (mm)	86
Maximum Power (PS)	220
Max Power Speed (rpm)	4800-5600
Max Torque Speed (rpm)	1700-4000
Maximum net power (kW)	-
Fuel Grade	95.
Fuel Delivery System	Mixed injection
Cylinder Head Material	Aluminum alloy
Cylinder Block Material	Aluminum alloy
Engine-specific technologies	VVT-iW

Screen/System

Central control color screen	<ul style="list-style-type: none">•
Bluetooth/In-car Phone	<ul style="list-style-type: none">•
In-car CD/DVD Player	<ul style="list-style-type: none">• Single disc CD

Body

Length (mm)	4855
Width (mm)	1925
Height (mm)	1720
Wheelbase (mm)	2790
Front Track (mm)	1635
Rear Track (mm)	1630
Door Opening Type	-
Number of Doors	5
Number of Seats	7
Fuel Tank Capacity (L)	72
Trunk volume (L)	-
Drag Coefficient (Cd)	-

Gearbox

Abbreviation	6-speed manual integration
Number of Gears	6
Transmission Type	Automatic Transmission with Manual Mode (AT)

Chassis steering

Drive Type	Front-engine, Front-wheel drive (FF)
Front Suspension Type	MacPherson independent suspension
Rear Suspension Type	E-type multi-link independent suspension
Power Steering Type	Electric power assistance
Vehicle structure	bearing type

Seat Configuration

Seat Material	<ul style="list-style-type: none">• Leather
Main seat adjustment	<ul style="list-style-type: none">• Front and rear adjustment;• Backrest adjustment;• Height adjustment (2-way);• Height adjustment (4-way)

Seat Configuration (continued)

Co-seat adjustment method	• Front and rear adjustment; • Backrest adjustment
Electric adjustment of driver's seat and passenger seat	Main •/Deputy •
Front seat functions	• Heating
Front passenger seat rear adjustable buttons	-
Second row seat adjustment	• Front and rear adjustment; • Backrest adjustment
Rear seat folding	• Proportional down
Front/rear center armrest	Front •/Rear •
Rear cup holder	•

Active safety

Anti-lock Braking System (ABS)	•
Electronic Brakeforce Distribution (EBD/CBC)	•
Brake Assist System (EBA/BAS/BA)	•
Traction Control System (ASR/TCS/TRC)	•
Electronic Stability Control (ESC/ESP/DSC)	•
Seat Belt Reminder	•
ISOFIX Child Seat Anchors	•
Lane Departure Warning System (LDWS)	-
Autonomous Emergency Braking (AEB)	-
Driver Fatigue Detection	-

Air conditioning/refrigerator

Air conditioning temperature control method	• Automatic air conditioning
Rear Independent Climate Control	•
Rear seat air vents	•
Temperature zone control	•
Car air purifier	-

Air conditioning/refrigerator (continued)

In-cabin PM2.5 Filter	-
------------------------------	---

Passive safety

Driver/passenger airbag	Main •/Deputy •
Front/rear side airbags	Front •/Rear-
Front/rear head airbags (curtain airbags)	Front •/Rear •
Knee airbag	• Main driver knee airbag

Wheel brake

Front Brake Type	Ventilation disc
Rear Brake Type	Disc
Parking brake type	Foot brake
Front Tire Size	245/55 R19
Rear Tire Size	245/55 R19
Spare Tire Size	Full size

Audio/Interior Lighting

Number of speakers	• 6-7 Horns
---------------------------	-------------

Driving functions

Navigation traffic information display	-
Lane assist	-
Lane Keeping Assist System	-
Cruise control system	• Cruise control
Satellite navigation system	-
Parking Assist	-

Exterior lighting

Low beam light source	• Halogen
High beam light source	• Halogen
LED daytime running lights	•
Adaptive high and low beam	-
Automatic headlights	-
Front fog lights	•
Height-adjustable headlights	•

Exterior lighting (continued)

Headlight Delay Off	-
----------------------------	---

Exterior mirrors

Exterior mirror function	<ul style="list-style-type: none">• Electric adjustment;• Electric folding
---------------------------------	---

Appearance/anti-theft

Rim material	<ul style="list-style-type: none">• Aluminum alloy
Electric trunk	-
Electronic engine immobilizer	<ul style="list-style-type: none">•
Central locking system in the car	<ul style="list-style-type: none">•
Key Type	<ul style="list-style-type: none">• Remote key
Keyless start system	<ul style="list-style-type: none">•
Keyless entry function	<ul style="list-style-type: none">•
Roof rack	<ul style="list-style-type: none">•

Skylight/Glass

Sunroof Type	<ul style="list-style-type: none">• Panoramic sunroof
Front/rear electric windows	Front •/Rear •
Window anti-pinch function	<ul style="list-style-type: none">•
Car makeup mirror	<ul style="list-style-type: none">•
Rear wiper	<ul style="list-style-type: none">•

Interior and exterior color

Exterior Color	Glossy Black: #030303; Pearl White: #DDE2E0; Emerald Diamond Red: #701A1B; Crystal Silver: #9BA8AB; Tungsten Gray: #353F39
Interior Color	Black, Beige, #414544/#F8E9D1, Black, #414544

Steering wheel/interior mirror

Steering Wheel Material	<ul style="list-style-type: none">• Cortex
Steering wheel position adjustment	<ul style="list-style-type: none">• Manual up and down front and rear adjustment
Multi-function steering wheel	<ul style="list-style-type: none">•
Heated Steering Wheel	-
Steering wheel memory	-

Steering wheel/interior mirror (continued)

Trip computer display screen	•
Full LCD instrument panel	-
Interior rearview mirror function	• Manual anti-glare

Intelligent configuration

Connected Car Services	-
OTA Updates	-

Driving Control

Automatic parking	-
Hill start assist	•
Engine start-stop technology	•

Driving Hardware

Front/rear parking radar	-
Driving Assistance Camera System	• Reversing image

In-car charging

Multimedia/charging port	•USB;•AUX
---------------------------------	-----------

"●" = Standard equipment

"-" = Not available

"○" = Optional equipment.

Note: These are Chinese market vehicles. Warranty coverage is not available outside of China.