

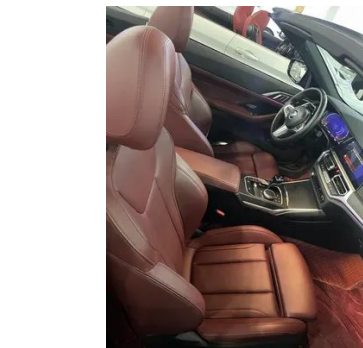
# Vehicle Detail Report

## BMW 4 Series 2022 Restyling 425i Convertible M Sports Night Suit

### Basic Information

Brand	BMW
Mileage	84,000 km
Color	Other
First Registration	2022-04-01
Transfer Count	0

### Vehicle Images





## Vehicle Condition

1. Left front frame rail, Scratch. 2. Right front frame rail, Scratch. 3. Inner side of right C-pillar, Scratch. 4. Driver's seat rails and frame, Signs of removal. 5. Front passenger seat rails and frame, Signs of removal. 6. Left rear quarter panel, Deformation.

## Configuration Information

### Model Information

<b>Model Name</b>	BMW 4 Series 2022 Restyling 425i Convertible M Sports Night Suit
<b>Launch Date</b>	2022.04

### Basic parameters

<b>Vehicle Class</b>	Mid-size car
<b>Energy Type</b>	Gasoline
<b>Maximum Power (kW)</b>	135
<b>Maximum Torque (N·m)</b>	300
<b>Transmission</b>	8-gear manual integration
<b>Body Type</b>	Soft-top Convertible
<b>Engine</b>	2.0L 184 hp L4
<b>Dimensions (L×W×H) (mm)</b>	4773*1852*1396
<b>Official 0-100 km/h Acceleration (s)</b>	8.2
<b>Top Speed (km/h)</b>	231
<b>Curb Weight (kg)</b>	1730
<b>Maximum Gross Weight (kg)</b>	2185

## Basic parameters (continued)

<b>WLTP Combined Fuel Consumption (L/100km)</b>	7
---	---

## engine

<b>Engine Model</b>	B48B20A
<b>Displacement (mL)</b>	1998
<b>Displacement (L)</b>	2.0
<b>Induction Type</b>	Turbocharging
<b>Cylinder Arrangement</b>	L
<b>Number of Cylinders</b>	4
<b>Valves per Cylinder</b>	4
<b>Compression Ratio</b>	11
<b>Valve Train</b>	DOHC
<b>Bore (mm)</b>	82
<b>Stroke (mm)</b>	94.6
<b>Maximum Power (PS)</b>	184
<b>Max Power Speed (rpm)</b>	5000-6500
<b>Max Torque Speed (rpm)</b>	1350-4000
<b>Maximum net power (kW)</b>	135
<b>Fuel Grade</b>	95.
<b>Fuel Delivery System</b>	Direct injection
<b>Cylinder Head Material</b>	Aluminum alloy
<b>Cylinder Block Material</b>	Aluminum alloy
<b>Engine layout</b>	Longitudinal
<b>Engine-specific technologies</b>	Double-VANOS/Valvetronic

## Screen/System

<b>Central control color screen</b>	<ul style="list-style-type: none"><li>• Touch LCD screen</li></ul>
<b>Infotainment Screen Size</b>	<ul style="list-style-type: none"><li>• 10.25 inches</li></ul>
<b>Bluetooth/In-car Phone</b>	<ul style="list-style-type: none"><li>•</li></ul>
<b>Smartphone Integration/Mirroring</b>	<ul style="list-style-type: none"><li>• Apple CarPlay support;</li><li>• Baidu CarLife support</li></ul>
<b>Voice recognition control system</b>	<ul style="list-style-type: none"><li>• Multimedia system;</li><li>• Navigation;</li><li>• Telephone;</li><li>• Air conditioning</li></ul>
<b>In-vehicle intelligent system</b>	<ul style="list-style-type: none"><li>• iDrive</li></ul>

## Body

## Body (continued)

<b>Length (mm)</b>	4773
<b>Width (mm)</b>	1852
<b>Height (mm)</b>	1396
<b>Wheelbase (mm)</b>	2851
<b>Front Track (mm)</b>	1575
<b>Rear Track (mm)</b>	1611
<b>Door Opening Type</b>	-
<b>Number of Doors</b>	2
<b>Number of Seats</b>	4
<b>Fuel Tank Capacity (L)</b>	59
<b>Trunk volume (L)</b>	385
<b>Drag Coefficient (Cd)</b>	-

## Gearbox

<b>Abbreviation</b>	8-gear manual integration
<b>Number of Gears</b>	8
<b>Transmission Type</b>	Automatic Transmission with Manual Mode (AT)

## Chassis steering

<b>Drive Type</b>	Front-engine, Rear-wheel drive (FR)
<b>Front Suspension Type</b>	Dual-ball-joint MacPherson independent suspension
<b>Rear Suspension Type</b>	Multi-link independent suspension
<b>Power Steering Type</b>	Electric power assistance
<b>Vehicle structure</b>	bearing type

## Seat Configuration

<b>Seat Material</b>	○ Leather (USD 1,750); • Imitation leather
<b>Main seat adjustment</b>	• Front and rear adjustment; • Backrest adjustment; • Height adjustment (4-way); • Leg support adjustment
<b>Co-seat adjustment method</b>	• Front and rear adjustment; • Backrest adjustment; • Height adjustment (4-way); • Leg support adjustment
<b>Electric adjustment of driver's seat and passenger seat</b>	Main •/Deputy •

## Seat Configuration (continued)

<b>Front seat functions</b>	○ Heating (USD 529)
<b>Electric seat memory function</b>	• Driving position
<b>Front passenger seat rear adjustable buttons</b>	-
<b>Rear seat folding</b>	• Overall down
<b>Front/rear center armrest</b>	Front •/Rear-
<b>Rear cup holder</b>	•
<b>Sports style seats</b>	•

## Active safety

<b>Anti-lock Braking System (ABS)</b>	•
<b>Electronic Brakeforce Distribution (EBD/CBC)</b>	•
<b>Brake Assist System (EBA/BAS/BA)</b>	•
<b>Traction Control System (ASR/TCS/TRC)</b>	•
<b>Electronic Stability Control (ESC/ESP/DSC)</b>	•
<b>Tire Pressure Monitoring System (TPMS)</b>	• Tire pressure display
<b>Seat Belt Reminder</b>	• Full vehicle
<b>ISOFIX Child Seat Anchors</b>	•
<b>Lane Departure Warning System (LDWS)</b>	•
<b>Autonomous Emergency Braking (AEB)</b>	•
<b>Driver Fatigue Detection</b>	•
<b>Forward Collision Warning (FCW)</b>	•
<b>Emergency Call System (eCall)</b>	•
<b>Built-in Dashcam</b>	○(USD 279)

## Air conditioning/refrigerator

<b>Air conditioning temperature control method</b>	• Automatic air conditioning
<b>Rear Independent Climate Control</b>	•

## Air conditioning/refrigerator (continued)

Rear seat air vents	•
Temperature zone control	•
Car air purifier	-
In-cabin PM2.5 Filter	•

## Passive safety

Driver/passenger airbag	Main •/Deputy •
Front/rear side airbags	Front •/Rear-
Front/rear head airbags (curtain airbags)	-
Run-flat tires	•

## Wheel brake

Front Brake Type	Ventilation disc
Rear Brake Type	Ventilation disc
Parking brake type	Electronic Parking
Front Tire Size	225/40 R19
Rear Tire Size	255/35 R19
Spare Tire Size	None

## Audio/Interior Lighting

Speaker Brand Name	○Harman/Kardon (USD 1,250)
Number of speakers	○ ≥ 12 horns; • 8-9 horns
Interior ambient lighting	• 11 colors

## Driving functions

Navigation traffic information display	•
Lane assist	○
Lane Keeping Assist System	-
Cruise control system	• Constant speed cruise; ○ Adaptive cruise (USD 662)
Satellite navigation system	•
Road traffic sign recognition	○
Tracking reverse	•
Parking Assist	•

## Exterior lighting

Low beam light source	•LED
-----------------------	------

## Exterior lighting (continued)

<b>High beam light source</b>	<ul style="list-style-type: none"><li>• Laser</li></ul>
<b>LED daytime running lights</b>	<ul style="list-style-type: none"><li>•</li></ul>
<b>Adaptive high and low beam</b>	<ul style="list-style-type: none"><li>•</li></ul>
<b>Automatic headlights</b>	<ul style="list-style-type: none"><li>•</li></ul>
<b>Front fog lights</b>	<ul style="list-style-type: none"><li>•LED</li></ul>
<b>Height-adjustable headlights</b>	<ul style="list-style-type: none"><li>•</li></ul>
<b>Headlight Delay Off</b>	<ul style="list-style-type: none"><li>•</li></ul>

## Exterior mirrors

<b>Exterior mirror function</b>	<ul style="list-style-type: none"><li>• Electric adjustment;</li><li>• Electric folding;</li><li>• Rearview mirror memory;</li><li>• Rearview mirror heating;</li><li>• Automatic downturning when reversing;</li><li>• Automatic folding when locked;</li><li>• Automatic anti-glare</li></ul>
---------------------------------	---

## Appearance/anti-theft

<b>Rim material</b>	<ul style="list-style-type: none"><li>• Aluminum alloy</li></ul>
<b>Electric trunk</b>	-
<b>Electronic engine immobilizer</b>	<ul style="list-style-type: none"><li>•</li></ul>
<b>Central locking system in the car</b>	<ul style="list-style-type: none"><li>•</li></ul>
<b>Key Type</b>	<ul style="list-style-type: none"><li>• Remote key</li></ul>
<b>Keyless start system</b>	<ul style="list-style-type: none"><li>•</li></ul>
<b>Keyless entry function</b>	<ul style="list-style-type: none"><li>• Full vehicle</li></ul>
<b>Appearance Kit</b>	<ul style="list-style-type: none"><li>• Sports style</li></ul>
<b>Hands-free Trunk</b>	<ul style="list-style-type: none"><li>•</li></ul>
<b>Remote start function</b>	<ul style="list-style-type: none"><li>•</li></ul>
<b>Active closed grille</b>	<ul style="list-style-type: none"><li>•</li></ul>
<b>Frameless door design</b>	<ul style="list-style-type: none"><li>•</li></ul>

## Skylight/Glass

<b>Front/rear electric windows</b>	Front •/Rear-
<b>One-touch window lifting function</b>	<ul style="list-style-type: none"><li>• Full vehicle</li></ul>
<b>Window anti-pinch function</b>	<ul style="list-style-type: none"><li>•</li></ul>

## Skylight/Glass (continued)

<b>Car makeup mirror</b>	<ul style="list-style-type: none"><li>• Main driver's lamp; • co-pilot's lamp</li></ul>
<b>Rear wiper</b>	-
<b>Rain sensor wiper function</b>	<ul style="list-style-type: none"><li>• Rainfall-sensing</li></ul>

## Interior and exterior color

<b>Exterior Color</b>	San Remo Green #6E825F Gem Green #242224 tourmaline gray #5D564C Porti Mango Blue #364D96 Brooklyn Grey #B4CEDF Dan Quan Stone Blue #05526E Speed Blue #4C5E80 Ore White #E7E7E7 Matte gray #949A9C Placer gold stone red #820A0A
<b>Interior Color</b>	Black Volcano Red #000000 #FF0F0F Black #000000 Black Cognac color #000000 #94693E Black pearl shell white #000000 #EBDEEB

## Steering wheel/interior mirror

<b>Steering Wheel Material</b>	<ul style="list-style-type: none"><li>• Leather</li></ul>
<b>Steering wheel position adjustment</b>	<ul style="list-style-type: none"><li>• Manual up and down front and rear adjustment</li></ul>
<b>Multi-function steering wheel</b>	<ul style="list-style-type: none"><li>•</li></ul>
<b>Heated Steering Wheel</b>	○(USD 368)
<b>Steering wheel memory</b>	-
<b>Trip computer display screen</b>	<ul style="list-style-type: none"><li>• Color</li></ul>
<b>Full LCD instrument panel</b>	<ul style="list-style-type: none"><li>•</li></ul>
<b>LCD instrument size</b>	<ul style="list-style-type: none"><li>• 12.3 inches</li></ul>
<b>Interior rearview mirror function</b>	<ul style="list-style-type: none"><li>• Automatic anti-glare</li></ul>
<b>Gear shifting</b>	<ul style="list-style-type: none"><li>• Electronic gear shift</li></ul>
<b>HUD Head Up Digital Display</b>	○(USD 1,559)
<b>Steering Wheel Shift Paddles</b>	<ul style="list-style-type: none"><li>•</li></ul>

## Intelligent configuration

<b>Connected Car Services</b>	<ul style="list-style-type: none"><li>•</li></ul>
<b>OTA Updates</b>	<ul style="list-style-type: none"><li>•</li></ul>
<b>4G/5G Network</b>	<ul style="list-style-type: none"><li>•4G</li></ul>

## Intelligent configuration (continued)

<b>Mobile APP remote function</b>	•
<b>Wi-Fi hotspots</b>	○

## Driving Control

<b>Driving mode switch</b>	• Sport; • Economy; • Standard/Comfort; • Customization/Personalization
<b>Automatic parking</b>	•
<b>Hill start assist</b>	•
<b>Variable steering ratio</b>	○
<b>Engine start-stop technology</b>	•

## Driving Hardware

<b>Front/rear parking radar</b>	Front •/Rear •
<b>Driving Assistance Camera System</b>	• 360-degree panoramic image

## In-car charging

<b>Multimedia/charging port</b>	•USB;•Type-C
<b>Number of USB/Type-C ports</b>	• 2 in the front row; ○ 2 in the front row/2 in the back row
<b>Mobile phone wireless charging function</b>	○ Front row (USD 662)
<b>Luggage compartment 12V power socket</b>	○

## Optional Package

<b>Optional Package</b>	Driving safety assist system (USD 1,250; including: including forward collision warning and emergency braking assist, lane correction assist, lane change blind zone warning, speed limit recognition assist functions)
-------------------------	---

"●" = Standard equipment

"\_" = Not available

"○" = Optional equipment.

Note: These are Chinese market vehicles. Warranty coverage is not available outside of China.