

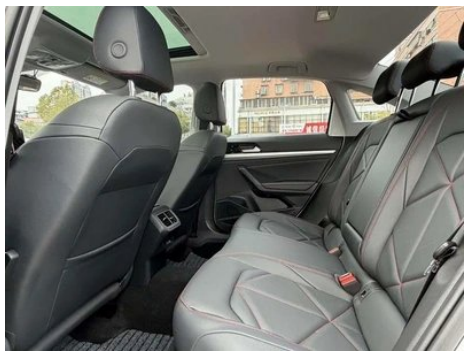
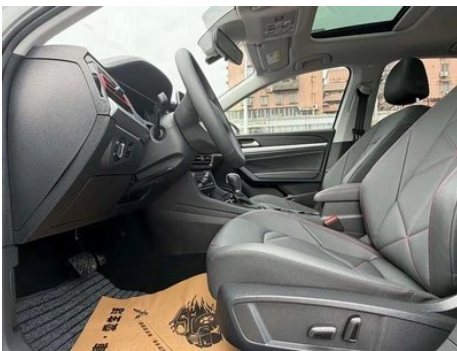
Vehicle Detail Report

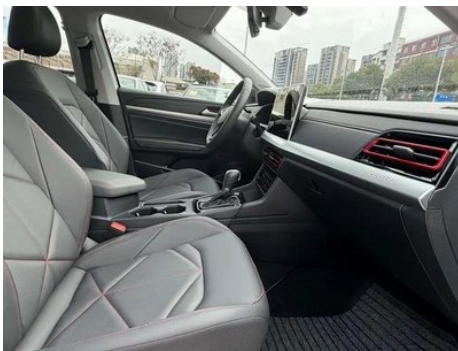
Lavida 2024 300TSI DSG Star Leading Edition

Basic Information

| | |
|--------------------|------------|
| Brand | Volkswagen |
| Mileage | 3,000 km |
| Color | White |
| First Registration | 2024-10-01 |
| Transfer Count | 0 |

Vehicle Images





Vehicle Condition

1. Original metal panels and factory paint.

Configuration Information

Model Information

| | |
|--------------------|---|
| Model Name | Langyi 2024 300TSI DSG Star Leading Edition |
| Launch Date | 2023.09 |

Basic parameters

| | |
|-----------------------------|-------------|
| Vehicle Class | compact car |
| Energy Type | Gasoline |
| Maximum Power (kW) | 118 |
| Maximum Torque (N·m) | 250 |

Basic parameters (continued)

| | |
|---|-------------------------|
| Transmission | 7-speed dry dual clutch |
| Body Type | Sedan |
| Engine | 1.5T 160 horsepower L4 |
| Dimensions (L×W×H) (mm) | 4678*1806*1474 |
| Official 0-100 km/h Acceleration (s) | - |
| Top Speed (km/h) | 200 |
| Curb Weight (kg) | 1345 |
| Maximum Gross Weight (kg) | 1805 |
| WLTP Combined Fuel Consumption (L/100km) | 5.40 |

engine

| | |
|--------------------------------|------------------|
| Engine Model | EA211-DSV |
| Displacement (mL) | 1498 |
| Displacement (L) | 1.5 |
| Induction Type | Turbocharging |
| Cylinder Arrangement | L |
| Number of Cylinders | 4 |
| Valves per Cylinder | 4 |
| Valve Train | DOHC |
| Maximum Power (PS) | 160 |
| Max Power Speed (rpm) | 5500 |
| Max Torque Speed (rpm) | 1750-4000 |
| Maximum net power (kW) | 118 |
| Fuel Grade | 95. |
| Fuel Delivery System | Direct injection |
| Cylinder Head Material | Aluminum alloy |
| Cylinder Block Material | Aluminum alloy |
| Engine layout | Horizontal |
| Minimum Fuel Grade | 92. |

Screen/System

| | |
|-------------------------------------|--|
| Central control color screen | <ul style="list-style-type: none">• Touch LCD screen |
| Infotainment Screen Size | <ul style="list-style-type: none">• 12 inches |

Screen/System (continued)

| | |
|---|--|
| Bluetooth/In-car Phone | <ul style="list-style-type: none">• |
| Smartphone Integration/Mirroring | <ul style="list-style-type: none">• Support CarPlay;• Support CarLife |
| Voice recognition control system | <ul style="list-style-type: none">• Multimedia system;• Navigation;• Telephone |

Body

| | |
|-------------------------------|------------|
| Length (mm) | 4678 |
| Width (mm) | 1806 |
| Height (mm) | 1474 |
| Wheelbase (mm) | 2688 |
| Front Track (mm) | 1546 |
| Rear Track (mm) | 1520 |
| Door Opening Type | swing door |
| Number of Doors | 4 |
| Number of Seats | 5 |
| Fuel Tank Capacity (L) | 51 |
| Trunk volume (L) | 510 |
| Drag Coefficient (Cd) | - |
| Approach Angle (°) | 15 |
| Departure Angle (°) | 14 |

Gearbox

| | |
|--------------------------|------------------------------------|
| Abbreviation | 7-speed dry dual clutch |
| Number of Gears | 7 |
| Transmission Type | Dry Dual-Clutch Transmission (DCT) |

Chassis steering

| | |
|------------------------------|---|
| Drive Type | Front-engine, Front-wheel drive (FF) |
| Front Suspension Type | MacPherson independent suspension |
| Rear Suspension Type | Torsion beam non-independent suspension |
| Power Steering Type | Electric power assistance |
| Vehicle structure | bearing type |

Seat Configuration

| | |
|----------------------|---|
| Seat Material | <ul style="list-style-type: none">• Imitation leather |
|----------------------|---|

Seat Configuration (continued)

| | |
|--|---|
| Main seat adjustment | <ul style="list-style-type: none">• Front and rear adjustment;• Backrest adjustment;• Height adjustment (2-way);• Lumbar support (2-way) |
| Co-seat adjustment method | <ul style="list-style-type: none">• Front and rear adjustment;• Backrest adjustment |
| Electric adjustment of driver's seat and passenger seat | Main/Deputy- |
| Front seat functions | <ul style="list-style-type: none">• Heating |
| Front passenger seat rear adjustable buttons | - |
| Rear seat folding | <ul style="list-style-type: none">• Proportional down |
| Front/rear center armrest | Front •/Rear • |
| Rear cup holder | <ul style="list-style-type: none">• |

Active safety

| | |
|---|---|
| Anti-lock Braking System (ABS) | <ul style="list-style-type: none">• |
| Electronic Brakeforce Distribution (EBD/CBC) | <ul style="list-style-type: none">• |
| Brake Assist System (EBA/BAS/BA) | <ul style="list-style-type: none">• |
| Traction Control System (ASR/TCS/TRC) | <ul style="list-style-type: none">• |
| Electronic Stability Control (ESC/ESP/DSC) | <ul style="list-style-type: none">• |
| Tire Pressure Monitoring System (TPMS) | <ul style="list-style-type: none">• Tire pressure alarm |
| Seat Belt Reminder | <ul style="list-style-type: none">• Front row |
| ISOFIX Child Seat Anchors | <ul style="list-style-type: none">• |
| Lane Departure Warning System (LDWS) | <ul style="list-style-type: none">• |
| Autonomous Emergency Braking (AEB) | <ul style="list-style-type: none">• |
| Driver Fatigue Detection | - |
| Forward Collision Warning (FCW) | <ul style="list-style-type: none">• |

Air conditioning/refrigerator

| | |
|--|--|
| Air conditioning temperature control method | <ul style="list-style-type: none">• Automatic air conditioning |
|--|--|

Air conditioning/refrigerator (continued)

| | |
|---|---|
| Rear Independent Climate Control | - |
| Rear seat air vents | • |
| Temperature zone control | • |
| Car air purifier | - |
| In-cabin PM2.5 Filter | • |

Passive safety

| | |
|--|-----------------|
| Driver/passenger airbag | Main •/Deputy • |
| Front/rear side airbags | Front •/Rear- |
| Front/rear head airbags (curtain airbags) | Front •/Rear • |

Wheel brake

| | |
|-----------------------------|--------------------|
| Front Brake Type | Ventilation disc |
| Rear Brake Type | Disc |
| Parking brake type | Electronic Parking |
| Front Tire Size | 205/55 R16 |
| Rear Tire Size | 205/55 R16 |
| Spare Tire Size | Not full-size |
| Spare tire placement | In the trunk |

Audio/Interior Lighting

| | |
|----------------------------------|--------------|
| Number of speakers | • 6 speakers |
| Interior ambient lighting | • Monochrome |

Driving functions

| | |
|---|------------------------------|
| Navigation traffic information display | • |
| Lane assist | - |
| Lane Keeping Assist System | • |
| Cruise control system | • Full speed adaptive cruise |
| Satellite navigation system | • |
| Driving assistance level | •L2 |
| Parking Assist | - |

Exterior lighting

| | |
|-------------------------------|------|
| Low beam light source | •LED |
| High beam light source | •LED |

Exterior lighting (continued)

| | |
|-------------------------------------|---|
| LED daytime running lights | • |
| Adaptive high and low beam | - |
| Automatic headlights | • |
| Height-adjustable headlights | • |
| Headlight Delay Off | • |
| Turn signal lamp | • |

Exterior mirrors

| | |
|---------------------------------|--|
| Exterior mirror function | •Electric adjustment; •Electric folding; •Rearview mirror heating; •Automatically turn down when reversing; •Automatically fold when locking the car |
|---------------------------------|--|

Appearance/anti-theft

| | |
|--|------------------|
| Rim material | • Aluminum alloy |
| Electric trunk | - |
| Electronic engine immobilizer | • |
| Central locking system in the car | • |
| Key Type | • Remote key |
| Keyless start system | • |
| Keyless entry function | • Front row |
| Appearance Kit | • Sports style |

Skylight/Glass

| | |
|--|--------------------|
| Sunroof Type | • Electric sunroof |
| Front/rear electric windows | Front •/Rear • |
| One-touch window lifting function | • Full car |
| Window anti-pinch function | • |
| Car makeup mirror | • COPILOT |
| Rear wiper | - |
| Rain sensor wiper function | • Rainfall-sensing |

Interior and exterior color

Interior and exterior color (continued)

| | |
|-----------------------|--|
| Exterior Color | Ye Qinghui:#B4B4B6; Tianzhen Blue:#94B5C7; Mysterious Black:#000103; Opening remarks:#FFFFFF |
| Interior Color | Cool Black:#000000 |

Steering wheel/interior mirror

| | |
|---|--|
| Steering Wheel Material | <ul style="list-style-type: none">• Cortex |
| Steering wheel position adjustment | <ul style="list-style-type: none">• Manual up and down front and rear adjustment |
| Multi-function steering wheel | <ul style="list-style-type: none">• |
| Heated Steering Wheel | - |
| Steering wheel memory | - |
| Trip computer display screen | <ul style="list-style-type: none">• Color |
| Full LCD instrument panel | <ul style="list-style-type: none">• |
| LCD instrument size | <ul style="list-style-type: none">• 10.25 inches |
| Interior rearview mirror function | <ul style="list-style-type: none">• Manual anti-glare |
| Gear shifting | <ul style="list-style-type: none">• Mechanical gear shift |

Intelligent configuration

| | |
|-----------------------------------|---|
| Connected Car Services | <ul style="list-style-type: none">• |
| OTA Updates | <ul style="list-style-type: none">• |
| 4G/5G Network | <ul style="list-style-type: none">•4G |
| Mobile APP remote function | <ul style="list-style-type: none">• |
| Wi-Fi hotspots | <ul style="list-style-type: none">• |

Driving Control

| | |
|-------------------------------------|---|
| Driving mode switch | <ul style="list-style-type: none">• Movement;• Economy |
| Automatic parking | <ul style="list-style-type: none">• |
| Hill start assist | <ul style="list-style-type: none">• |
| Engine start-stop technology | <ul style="list-style-type: none">• |

Driving Hardware

| | |
|---|---|
| Front/rear parking radar | Front •/Rear • |
| Driving Assistance Camera System | <ul style="list-style-type: none">• Reversing image |
| Number of cameras | <ul style="list-style-type: none">• 2 |

Driving Hardware (continued)

| | |
|---------------------------------------|-----------|
| Number of ultrasonic radars | •8 pieces |
| Millimeter wave radar quantity | • 1 |

In-car charging

| | |
|-----------------------------------|--|
| Multimedia/charging port | •USB;•Type-C |
| Number of USB/Type-C ports | • 2 in the front row/2 in the back row |

"●" = Standard equipment

"-" = Not available

"○" = Optional equipment.

Note: These are Chinese market vehicles. Warranty coverage is not available outside of China.