

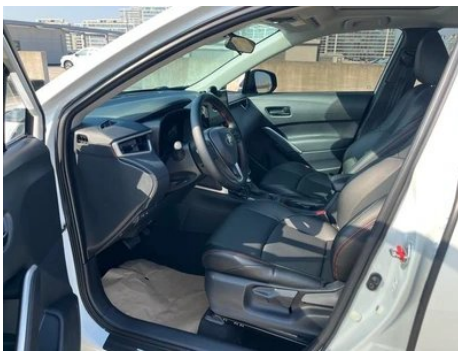
Vehicle Detail Report

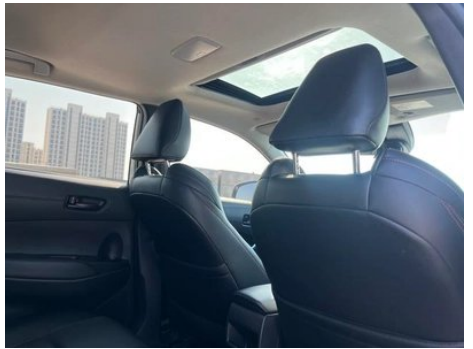
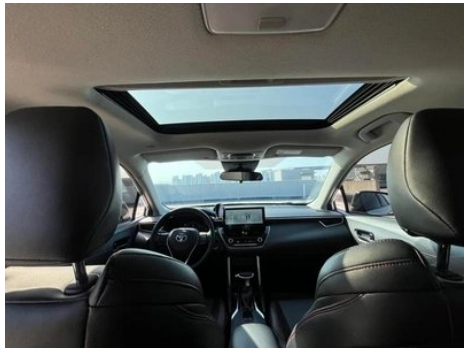
Frontlander 2023 2.0L CVT Leading Edition

Basic Information

Brand	Toyota
Mileage	21,000 km
Color	White
First Registration	2024-05-01
Transfer Count	0

Vehicle Images







Vehicle Condition

1. Rear body panel, Deformation. 2. Driver seat rails and frame, Signs of disassembly. 3. Passenger seat rails and frame, Signs of disassembly.

Configuration Information

Model Information

Model Name	Frontlander 2023 2.0L CVT Leading Edition
Launch Date	2023.03

Basic parameters

Vehicle Class	Compact SUV
Energy Type	Gasoline
Maximum Power (kW)	126
Maximum Torque (N·m)	205
Transmission	CVT continuously variable (simulating 10 gears)
Body Type	SUV
Engine	2.0L 171 horsepower L4
Dimensions (L×W×H) (mm)	4485*1825*1620
Official 0-100 km/h Acceleration (s)	-
Top Speed (km/h)	180
Curb Weight (kg)	1405
Maximum Gross Weight (kg)	1910
WLTP Combined Fuel Consumption (L/100km)	6.15

engine

Engine Model	M20A/M20C
Displacement (mL)	1987
Displacement (L)	2.0
Induction Type	Natural aspiration

engine (continued)

Cylinder Arrangement	L
Number of Cylinders	4
Valves per Cylinder	4
Compression Ratio	13
Valve Train	DOHC
Maximum Power (PS)	171
Max Power Speed (rpm)	6600
Max Torque Speed (rpm)	4600-5000
Maximum net power (kW)	126
Fuel Grade	92.
Fuel Delivery System	Mixed injection
Cylinder Head Material	Aluminum alloy
Cylinder Block Material	Aluminum alloy
Engine layout	Horizontal
Engine-specific technologies	VVT-iE□ VVT-i

Screen/System

Central control color screen	<ul style="list-style-type: none">• Touch LCD screen
Infotainment Screen Size	<ul style="list-style-type: none">• 10.25 inches
Bluetooth/In-car Phone	<ul style="list-style-type: none">•
Smartphone Integration/Mirroring	<ul style="list-style-type: none">• Support CarPlay;• Support CarLife;• Support HUAWEI HiCar
Voice recognition control system	<ul style="list-style-type: none">• Multimedia system;• Navigation;• Telephone

Body

Length (mm)	4485
Width (mm)	1825
Height (mm)	1620
Wheelbase (mm)	2640
Front Track (mm)	1565
Rear Track (mm)	1580
Door Opening Type	swing door
Number of Doors	5
Number of Seats	5

Body (continued)

Fuel Tank Capacity (L)	47
Trunk volume (L)	438
Drag Coefficient (Cd)	-
Approach Angle (°)	12
Departure Angle (°)	20
Minimum Turning Radius (m)	5.2

Gearbox

Abbreviation	CVT continuously variable (simulating 10 gears)
Number of Gears	10
Transmission Type	Continuously Variable Transmission (CVT)

Chassis steering

Drive Type	Front-engine, Front-wheel drive (FF)
Front Suspension Type	MacPherson independent suspension
Rear Suspension Type	Torsion beam non-independent suspension
Power Steering Type	Electric power assistance
Vehicle structure	bearing type

Seat Configuration

Seat Material	• Fabric
Main seat adjustment	• Front and rear adjustment; • Backrest adjustment; • Height adjustment (2-way)
Co-seat adjustment method	• Front and rear adjustment; • Backrest adjustment
Electric adjustment of driver's seat and passenger seat	-
Front passenger seat rear adjustable buttons	-
Second row seat adjustment	• Backrest adjustment
Rear seat folding	• Proportional down
Front/rear center armrest	Front •/Rear-
Rear cup holder	•

Active safety

Active safety (continued)

Anti-lock Braking System (ABS)	•
Electronic Brakeforce Distribution (EBD/CBC)	•
Brake Assist System (EBA/BAS/BA)	•
Traction Control System (ASR/TCS/TRC)	•
Electronic Stability Control (ESC/ESP/DSC)	•
Tire Pressure Monitoring System (TPMS)	• Tire pressure display
Seat Belt Reminder	• Full car
ISOFIX Child Seat Anchors	•
Lane Departure Warning System (LDWS)	•
Autonomous Emergency Braking (AEB)	•
Driver Fatigue Detection	-
Forward Collision Warning (FCW)	•
Emergency Call System (eCall)	•

Air conditioning/refrigerator

Air conditioning temperature control method	• Manual air conditioning
Rear Independent Climate Control	-
Rear seat air vents	-
Temperature zone control	-
Car air purifier	-
In-cabin PM2.5 Filter	•

Passive safety

Driver/passenger airbag	Main •/Deputy •
Front/rear side airbags	Front •/Rear-
Front/rear head airbags (curtain airbags)	Front •/Rear •
Knee airbag	• Main driver knee airbag

Wheel brake

Wheel brake (continued)

Front Brake Type	Ventilation disc
Rear Brake Type	Disc
Parking brake type	Electronic Parking
Front Tire Size	215/60 R17
Rear Tire Size	215/60 R17
Spare Tire Size	Not full-size

Audio/Interior Lighting

Number of speakers	• 4 speakers
---------------------------	--------------

Driving functions

Navigation traffic information display	-
Lane assist	-
Lane Keeping Assist System	•
Cruise control system	• Full speed adaptive cruise
Satellite navigation system	-
Driving assistance level	• L2
Lane centering	•
Road traffic sign recognition	•
Driver assistance systems	• Toyota Safety Sense
Parking Assist	-

Exterior lighting

Low beam light source	• Halogen
High beam light source	• Halogen
LED daytime running lights	-
Adaptive high and low beam	•
Automatic headlights	•
Height-adjustable headlights	•
Headlight Delay Off	•

Exterior mirrors

Exterior mirror function	• Electric adjustment
---------------------------------	-----------------------

Appearance/anti-theft

Appearance/anti-theft (continued)

Rim material	<ul style="list-style-type: none">• Aluminum alloy
Electric trunk	-
Electronic engine immobilizer	<ul style="list-style-type: none">•
Central locking system in the car	<ul style="list-style-type: none">•
Key Type	<ul style="list-style-type: none">• Remote key
Keyless start system	<ul style="list-style-type: none">•
Keyless entry function	<ul style="list-style-type: none">• Front row

Skylight/Glass

Sunroof Type	<ul style="list-style-type: none">• Electric sunroof
Front/rear electric windows	Front •/Rear •
One-touch window lifting function	<ul style="list-style-type: none">• Full car
Window anti-pinch function	<ul style="list-style-type: none">•
Car makeup mirror	<ul style="list-style-type: none">• Main driving position;• First officer
Rear wiper	<ul style="list-style-type: none">•

Interior and exterior color

Exterior Color	Ink Crystal, Black:#000000, Black, Platinum, Pearl, White:#000000/#DDE2E0; Desert Gold:#CAC2C0, Crystal, Silver:#9BA8AB, Platinum, Pearl, White:#DCE2E0, Black, Coloured glazed gold:#000000/#A08842, Black, Desert Gold:#000000/#A69481, Black, Coral red:#000000/#820305; Glass gold:#A08842; Coral red:#820305; Fluorite Blue:#1432DC
Interior Color	Black:#414544; Black/Grey:#000000/#E6E6E6

Steering wheel/interior mirror

Steering Wheel Material	<ul style="list-style-type: none">• Plastic
Steering wheel position adjustment	<ul style="list-style-type: none">• Manual up and down front and rear adjustment
Multi-function steering wheel	<ul style="list-style-type: none">•
Heated Steering Wheel	-
Steering wheel memory	-

Steering wheel/interior mirror (continued)

Trip computer display screen	• Color
Full LCD instrument panel	-
LCD instrument size	• 7 inches
Interior rearview mirror function	• Manual anti-glare
Gear shifting	• Mechanical gear shift
ETC Device	○

Intelligent configuration

Connected Car Services	-
OTA Updates	-
Mobile APP remote function	• Door control; • Air conditioning control; • Vehicle condition inquiry/diagnosis; • Vehicle location/vehicle search, • Appointment for maintenance/repair

Driving Control

Driving mode switch	• Movement; • Economy
Automatic parking	•
Hill start assist	•
Engine start-stop technology	•

Driving Hardware

Front/rear parking radar	-
---------------------------------	---

In-car charging

Multimedia/charging port	•Type-C
Number of USB/Type-C ports	• 1 in the front row/2 in the back row

"●" = Standard equipment

"-" = Not available

"○" = Optional equipment.

Note: These are Chinese market vehicles. Warranty coverage is not available outside of China.