

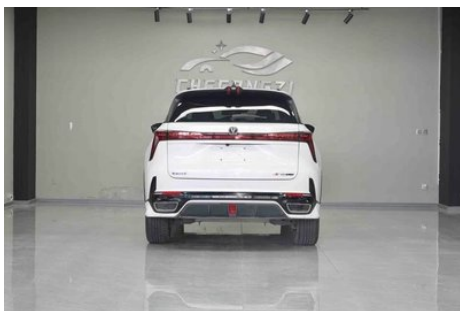
Vehicle Detail Report

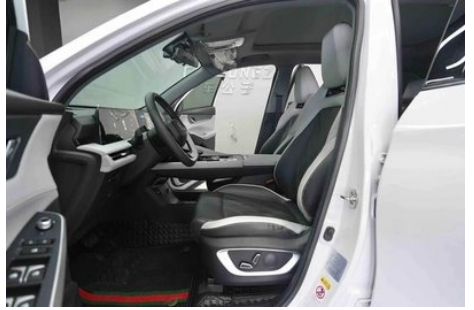
Changan CS75 Plus 2023 Third generation 1.5T
Automatic pilot type

Basic Information

Brand	Changan
Mileage	29,400 km
Color	White
First Registration	2023-09-01
Transfer Count	0

Vehicle Images







Vehicle Condition

1. Driver's seat rails and frame, Signs of removal. 2. Left rear quarter panel, Deformation.

Configuration Information

Model Information

Model Name	Changan CS75 Plus 2023 Third generation 1.5T Automatic pilot type
Launch Date	2023.04

Basic parameters

Vehicle Class	Compact SUV
Energy Type	Gasoline
Maximum Power (kW)	138
Maximum Torque (N·m)	300
Transmission	8-gear manual integration
Body Type	SUV
Engine	1.5T 188 horsepower L4
Dimensions (L×W×H) (mm)	4710*1865*1710
Official 0-100 km/h Acceleration (s)	-
Top Speed (km/h)	190
Curb Weight (kg)	1575
Maximum Gross Weight (kg)	1950
WLTP Combined Fuel Consumption (L/100km)	6.96

engine

Engine Model	JL473ZQ7
Displacement (mL)	1494
Displacement (L)	1.5
Induction Type	Turbocharging
Cylinder Arrangement	L

engine (continued)

Number of Cylinders	4
Valves per Cylinder	4
Valve Train	DOHC
Maximum Power (PS)	188
Max Power Speed (rpm)	5500
Max Torque Speed (rpm)	1500-4000
Maximum net power (kW)	133
Fuel Grade	92.
Fuel Delivery System	Direct injection
Cylinder Head Material	Aluminum alloy
Cylinder Block Material	Aluminum alloy
Engine layout	Horizontal

Screen/System

Central control color screen	<ul style="list-style-type: none">• Touch LCD screen
Infotainment Screen Size	<ul style="list-style-type: none">• 12.3 inches
Bluetooth/In-car Phone	<ul style="list-style-type: none">•
Smartphone Integration/ Mirroring	<ul style="list-style-type: none">• OEM smartphone integration/ mirroring
Voice recognition control system	<ul style="list-style-type: none">• Multimedia system;• Navigation;• Telephone;• Air conditioning;• Sunroof
Facial Recognition	<ul style="list-style-type: none">•
Gesture Control	<ul style="list-style-type: none">•

Body

Length (mm)	4710
Width (mm)	1865
Height (mm)	1710
Wheelbase (mm)	2710
Front Track (mm)	1585
Rear Track (mm)	1585
Ground Clearance (Fully Loaded) (mm)	170
Door Opening Type	swing door
Number of Doors	5
Number of Seats	5

Body (continued)

Fuel Tank Capacity (L)	58
Trunk volume (L)	620-1450
Drag Coefficient (Cd)	-
Approach Angle (°)	20
Departure Angle (°)	24
Minimum ground clearance without load (mm)	190
Longitudinal passing angle (°)	18

Gearbox

Abbreviation	8-gear manual integration
Number of Gears	8
Transmission Type	Automatic Transmission with Manual Mode (AT)

Chassis steering

Drive Type	Front-engine, Front-wheel drive (FF)
Front Suspension Type	MacPherson independent suspension
Rear Suspension Type	Multi-link independent suspension
Power Steering Type	Electric power assistance
Vehicle structure	bearing type

Seat Configuration

Seat Material	• Imitation leather
Main seat adjustment	• Front and rear adjustment; • Backrest adjustment; • Height adjustment (2-way)
Co-seat adjustment method	• Front and rear adjustment; • Backrest adjustment
Electric adjustment of driver's seat and passenger seat	Main •/Deputy •
Front seat functions	• Heating
Front passenger seat rear adjustable buttons	-
Second row seat adjustment	• Backrest adjustment
Rear seat folding	• Proportional down
Front/rear center armrest	Front •/Rear •

Seat Configuration (continued)

Rear cup holder	•
Sports style seats	•

Active safety

Anti-lock Braking System (ABS)	•
Electronic Brakeforce Distribution (EBD/CBC)	•
Brake Assist System (EBA/BAS/BA)	•
Traction Control System (ASR/TCS/TRC)	•
Electronic Stability Control (ESC/ESP/DSC)	•
Tire Pressure Monitoring System (TPMS)	• Tire pressure display
Seat Belt Reminder	• Front row
ISOFIX Child Seat Anchors	•
Lane Departure Warning System (LDWS)	•
Autonomous Emergency Braking (AEB)	•
Driver Fatigue Detection	•
Forward Collision Warning (FCW)	•
Rear Collision Warning	•
Built-in Dashcam	•
Door Opening Warning (DOW)	•

Air conditioning/refrigerator

Air conditioning temperature control method	• Automatic air conditioning
Rear Independent Climate Control	-
Rear seat air vents	•
Temperature zone control	-
Car air purifier	•
In-cabin PM2.5 Filter	•
Negative ion generator	•

Passive safety

Passive safety (continued)

Driver/passenger airbag	Main •/Deputy •
Front/rear side airbags	Front •/Rear-
Front/rear head airbags (curtain airbags)	Front •/Rear •

Wheel brake

Front Brake Type	Ventilation disc
Rear Brake Type	Disc
Parking brake type	Electronic Parking
Front Tire Size	225/55 R19
Rear Tire Size	225/55 R19
Spare Tire Size	Not full-size

Audio/Interior Lighting

Number of speakers	• 8 speakers
---------------------------	--------------

Driving functions

Navigation traffic information display	•
Lane assist	•
Lane Keeping Assist System	•
Cruise control system	• Full speed adaptive cruise
Satellite navigation system	•
Driving assistance level	•L2
Rear Cross Traffic Alert	•
Lane centering	•
Road traffic sign recognition	•
Map Brand	• Amap; • Tencent
Parking Assist	-

Exterior lighting

Low beam light source	•LED
High beam light source	•LED
LED daytime running lights	•
Adaptive high and low beam	•
Automatic headlights	•

Exterior lighting (continued)

Height-adjustable headlights	<ul style="list-style-type: none">•
Headlight Delay Off	<ul style="list-style-type: none">•

Exterior mirrors

Exterior mirror function	<ul style="list-style-type: none">• Electric adjustment;• Electric folding;• Rearview mirror heating;• Automatic folding when locked
---------------------------------	-------------------------------------------------------------------------------------------------------------------------------------------------------------------------------

Appearance/anti-theft

Rim material	<ul style="list-style-type: none">• Aluminum alloy
Electric trunk	<ul style="list-style-type: none">•
Electronic engine immobilizer	<ul style="list-style-type: none">•
Central locking system in the car	<ul style="list-style-type: none">•
Key Type	<ul style="list-style-type: none">• Remote key;• Bluetooth key
Keyless start system	<ul style="list-style-type: none">•
Keyless entry function	<ul style="list-style-type: none">• Driving position
Electric trunk position memory	<ul style="list-style-type: none">•
Roof rack	<ul style="list-style-type: none">•
Remote start function	<ul style="list-style-type: none">•
Active closed grille	<ul style="list-style-type: none">•

Skylight/Glass

Sunroof Type	<ul style="list-style-type: none">• Openable panoramic sunroof
Front/rear electric windows	Front •/Rear •
One-touch window lifting function	<ul style="list-style-type: none">• Full vehicle
Window anti-pinch function	<ul style="list-style-type: none">•
Car makeup mirror	<ul style="list-style-type: none">• Main driver's lamp;• co-pilot's lamp
Rear wiper	<ul style="list-style-type: none">•
Rain sensor wiper function	<ul style="list-style-type: none">• Rainfall-sensing

Interior and exterior color

Interior and exterior color (continued)

Exterior Color	dazzle crystal white #FFFFFF Andean Grey #585B62 blue sky #ADC7DE Interstellar Blue #2E4FA0 Atomic putty #ABACB0 Noble Black #000000
Interior Color	Black/Mysterious Red:#000000/ #D47979; Ice Crystal Blue/ White:#2D4762/#E2E4E3; Black/ quicksand White:#000000/#E6E6E6

Steering wheel/interior mirror

Steering Wheel Material	<ul style="list-style-type: none">• Cortex
Steering wheel position adjustment	<ul style="list-style-type: none">• Manual up and down front and rear adjustment
Multi-function steering wheel	<ul style="list-style-type: none">•
Heated Steering Wheel	-
Steering wheel memory	-
Trip computer display screen	<ul style="list-style-type: none">• Color
Full LCD instrument panel	<ul style="list-style-type: none">•
LCD instrument size	<ul style="list-style-type: none">• 12.3 inches
Interior rearview mirror function	<ul style="list-style-type: none">• Manual anti-glare
Gear shifting	<ul style="list-style-type: none">• Electronic gear shift
HUD Head Up Digital Display	<ul style="list-style-type: none">•

Intelligent configuration

Connected Car Services	<ul style="list-style-type: none">•
OTA Updates	<ul style="list-style-type: none">•
4G/5G Network	<ul style="list-style-type: none">•4G
Mobile APP remote function	<ul style="list-style-type: none">• Door control; • Window control; • Vehicle start; • Climate control; • Seat heating; • Vehicle status check/diagnostics; • Vehicle location / find my car
Wi-Fi hotspots	<ul style="list-style-type: none">•

Driving Control

Driving mode switch	<ul style="list-style-type: none">• Sport; • Economy; • Standard/Comfort; • Customization/Personalization
Automatic parking	<ul style="list-style-type: none">•

Driving Control (continued)

Steep slope descent	•
Hill start assist	•
Engine start-stop technology	•

Driving Hardware

Front/rear parking radar	Front-/Rear •
Driving Assistance Camera System	• 360-degree panoramic image
Number of cameras	•8 pieces
Number of ultrasonic radars	• 4
Transparent chassis/540-degree imaging	•
Millimeter wave radar quantity	• 3

In-car charging

Multimedia/charging port	•USB;•SD
Number of USB/Type-C ports	• 1 in the front row/2 in the back row
Mobile phone wireless charging function	• Front row

"●" = Standard equipment

"-" = Not available

"○" = Optional equipment.

Note: These are Chinese market vehicles. Warranty coverage is not available outside of China.