

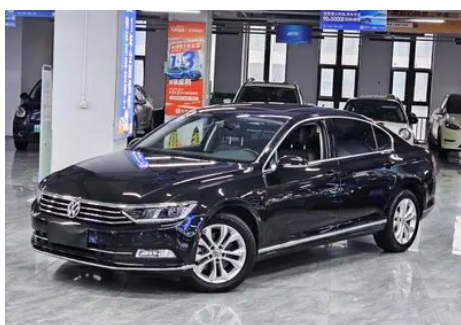
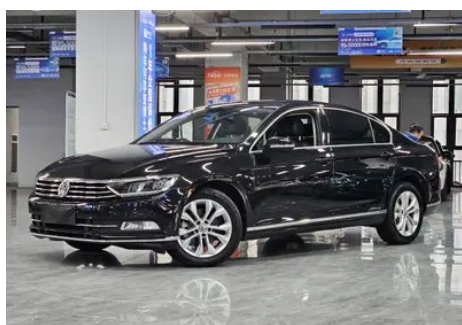
Vehicle Detail Report

Volkswagen Magotan 2019 330TSI DSG Luxury type China V

Basic Information

Brand	Volkswagen
Mileage	68,300 km
Color	Black
First Registration	2019-01-01
Transfer Count	0

Vehicle Images







Vehicle Condition

1. Left rear quarter panel, Scratch, Scratch damage. 2. Right rear quarter panel, Paint repair, Body panel repair, Welding repair.

Configuration Information

Model Information

Model Name	Volkswagen Magotan 2019 330TSI DSG Luxury type China V
Launch Date	2018.10

Basic parameters

Vehicle Class	Mid-size car
Energy Type	Gasoline
Maximum Power (kW)	137
Maximum Torque (N·m)	320
Transmission	7-speed wet dual-clutch
Body Type	Sedan
Engine	2.0T 186 horsepower L4
Dimensions (L×W×H) (mm)	4866*1832*1464
Official 0-100 km/h Acceleration (s)	7.5
Top Speed (km/h)	230
Curb Weight (kg)	1540
Maximum Gross Weight (kg)	-
NEDC Combined Fuel Consumption (L/100km)	6.2

engine

Engine Model	EA888-DBF
Displacement (mL)	1984
Displacement (L)	2.0
Induction Type	Turbocharging
Cylinder Arrangement	L

engine (continued)

Number of Cylinders	4
Valves per Cylinder	4
Valve Train	DOHC
Maximum Power (PS)	186
Max Power Speed (rpm)	5000
Max Torque Speed (rpm)	1600-4000
Maximum net power (kW)	-
Fuel Grade	95.
Fuel Delivery System	Mixed injection
Cylinder Head Material	Aluminum alloy
Cylinder Block Material	Cast iron

Screen/System

Central control color screen	<ul style="list-style-type: none">• Touch LCD screen
Infotainment Screen Size	<ul style="list-style-type: none">• 8 inches
Bluetooth/In-car Phone	<ul style="list-style-type: none">•
Smartphone Integration/Mirroring	<ul style="list-style-type: none">• Apple CarPlay support;• Baidu CarLife support;• OEM smartphone integration/mirroring
Voice recognition control system	<ul style="list-style-type: none">• Multimedia system;• Navigation;• Telephone

Body

Length (mm)	4866
Width (mm)	1832
Height (mm)	1464
Wheelbase (mm)	2871
Front Track (mm)	-
Rear Track (mm)	-
Door Opening Type	-
Number of Doors	4
Number of Seats	5
Fuel Tank Capacity (L)	66
Trunk volume (L)	533
Drag Coefficient (Cd)	-

Gearbox

Gearbox (continued)

Abbreviation	7-speed wet dual-clutch
Number of Gears	7
Transmission Type	Wet Dual-Clutch Transmission (DCT)

Chassis steering

Drive Type	Front-engine, Front-wheel drive (FF)
Front Suspension Type	MacPherson independent suspension
Rear Suspension Type	Multi-link independent suspension
Power Steering Type	Electric power assistance
Vehicle structure	bearing type

Seat Configuration

Seat Material	• Leather
Main seat adjustment	• Front and rear adjustment; • Backrest adjustment; • Height adjustment (4-way); • Lumbar support (4-way)
Co-seat adjustment method	• Front and rear adjustment; • Backrest adjustment; • Height adjustment (4-way); • Lumbar support (4-way)
Electric adjustment of driver's seat and passenger seat	Main •/Deputy •
Front seat functions	• Heating
Front passenger seat rear adjustable buttons	•
Rear seat folding	• Proportional down
Front/rear center armrest	Front •/Rear •
Rear cup holder	•

Active safety

Anti-lock Braking System (ABS)	•
Electronic Brakeforce Distribution (EBD/CBC)	•
Brake Assist System (EBA/BAS/BA)	•
Traction Control System (ASR/TCS/TRC)	•
Electronic Stability Control (ESC/ESP/DSC)	•

Active safety (continued)

Tire Pressure Monitoring System (TPMS)	• Tire pressure alarm
Seat Belt Reminder	• Front row
ISOFIX Child Seat Anchors	•
Lane Departure Warning System (LDWS)	-
Autonomous Emergency Braking (AEB)	-
Driver Fatigue Detection	•

Air conditioning/refrigerator

Air conditioning temperature control method	• Automatic air conditioning
Rear Independent Climate Control	•
Rear seat air vents	•
Temperature zone control	•
Car air purifier	•
In-cabin PM2.5 Filter	•

Passive safety

Driver/passenger airbag	Main •/Deputy •
Front/rear side airbags	Front •/Rear •
Front/rear head airbags (curtain airbags)	Front •/Rear •
Knee airbag	• Driver's knee airbag

Wheel brake

Front Brake Type	Ventilation disc
Rear Brake Type	Disc
Parking brake type	Electronic Parking
Front Tire Size	215/55 R17
Rear Tire Size	215/55 R17
Spare Tire Size	Not full-size

Audio/Interior Lighting

Number of speakers	• 8 speakers
Interior ambient lighting	• Monochrome

Driving functions

Driving functions (continued)

Navigation traffic information display	-
Lane assist	-
Lane Keeping Assist System	-
Cruise control system	• Cruise control
Satellite navigation system	•
Parking Assist	-

Exterior lighting

Low beam light source	•LED
High beam light source	•LED
LED daytime running lights	•
Adaptive high and low beam	○
Automatic headlights	•
Front fog lights	• Halogen
Height-adjustable headlights	•
Headlight Delay Off	•
Turn headlights	○
Headlight cleaning device	○
Turn signal lamp	•

Exterior mirrors

Exterior mirror function	• Electric adjustment; • Electric folding; • Rearview mirror heating; • Automatic folding when locked
---------------------------------	---

Appearance/anti-theft

Rim material	• Aluminum alloy
Electronic engine immobilizer	•
Central locking system in the car	•
Key Type	• Remote key
Keyless start system	•
Keyless entry function	• Full vehicle
Hands-free Trunk	•

Skylight/Glass

Sunroof Type	• Openable panoramic sunroof
Front/rear electric windows	Front •/Rear •
One-touch window lifting function	• Full vehicle
Window anti-pinch function	•
Car makeup mirror	• Main driver's lamp; • co-pilot's lamp
Rear wiper	-
Rain sensor wiper function	• Rainfall-sensing

Interior and exterior color

Exterior Color	Phantom Black #000000 Polar White #FFFFFF Cairo Gold #93705D Caesar Gold #DCD3C0 Quicksand gold #B39E8D Romani Red #981537 Prussian Grey #444C5F Oak Brown #786E6D Yashi Silver #D2D2D2
Interior Color	Black:#252B2A

Steering wheel/interior mirror

Steering Wheel Material	• Leather
Steering wheel position adjustment	• Manual up and down front and rear adjustment
Multi-function steering wheel	•
Heated Steering Wheel	-
Steering wheel memory	-
Trip computer display screen	• Monochrome
Full LCD instrument panel	-
Interior rearview mirror function	• Automatic anti-glare

Intelligent configuration

Connected Car Services	-
OTA Updates	-

Driving Control

Driving mode switch	• Movement
Automatic parking	•

Driving Control (continued)

Hill start assist	•
Engine start-stop technology	•

Driving Hardware

Front/rear parking radar	Front •/Rear •
Driving Assistance Camera System	• Reversing image

In-car charging

Multimedia/charging port	•USB
Number of USB/Type-C ports	• 1 front row/1 back row
220V/230V power supply	•

"●" = Standard equipment

"-" = Not available

"○" = Optional equipment.

Note: These are Chinese market vehicles. Warranty coverage is not available outside of China.