

Vehicle Detail Report

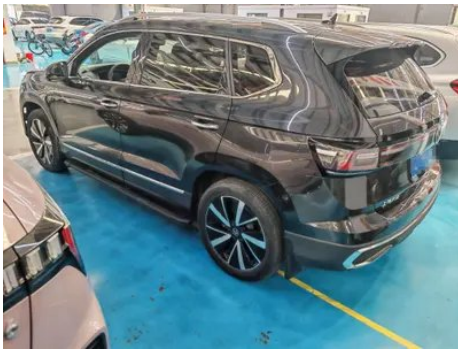
Volkswagen Tharu 2024 300TSI two-wheel drive bright moon version

Basic Information

Brand	Volkswagen
Mileage	19,000 km
Color	Dark gray
First Registration	2025-01-01
Transfer Count	0

Vehicle Images





Vehicle Condition

1. Inner side of right C-pillar, Scratch. 2. Driver's seat rails and frame, Signs of removal. 3. Front passenger seat rails and frame, Signs of removal.

Configuration Information

Model Information

Model Name	Volkswagen Tharu 2024 300TSI two-wheel drive bright moon version
Launch Date	2024.03

Basic parameters

Vehicle Class	Compact SUV
Energy Type	Gasoline
Maximum Power (kW)	118
Maximum Torque (N·m)	250
Transmission	7-speed dry dual clutch
Body Type	SUV
Engine	1.5T 160 horsepower L4
Dimensions (L×W×H) (mm)	4458*1841*1632
Official 0-100 km/h Acceleration (s)	9.7
Top Speed (km/h)	200
Curb Weight (kg)	1480
Maximum Gross Weight (kg)	1950
WLTP Combined Fuel Consumption (L/100km)	5.99

engine

Engine Model	EA211-DSV
Displacement (mL)	1498
Displacement (L)	1.5
Induction Type	Turbocharging
Cylinder Arrangement	L

engine (continued)

Number of Cylinders	4
Valves per Cylinder	4
Valve Train	DOHC
Maximum Power (PS)	160
Max Power Speed (rpm)	5500
Max Torque Speed (rpm)	1750-4000
Maximum net power (kW)	118
Fuel Grade	95.
Fuel Delivery System	Direct injection
Cylinder Head Material	Aluminum alloy
Cylinder Block Material	Aluminum alloy
Engine layout	Horizontal
Engine-specific technologies	Miller cycle
Minimum Fuel Grade	92.

Screen/System

Central control color screen	<ul style="list-style-type: none">• Touch LCD screen
Infotainment Screen Size	<ul style="list-style-type: none">• 8 inches ○12 inch
Bluetooth/In-car Phone	<ul style="list-style-type: none">•
Smartphone Integration/ Mirroring	<ul style="list-style-type: none">• Apple CarPlay support;• Baidu CarLife support;• HUAWEI HiCar support
Voice recognition control system	<ul style="list-style-type: none">• Multimedia system;• Navigation;• Telephone
In-vehicle intelligent system	<ul style="list-style-type: none">•IQ. Connectivity

Body

Length (mm)	4458
Width (mm)	1841
Height (mm)	1632
Wheelbase (mm)	2680
Front Track (mm)	1576
Rear Track (mm)	1541
Door Opening Type	swing door
Number of Doors	5

Body (continued)

Number of Seats	5
Fuel Tank Capacity (L)	51
Trunk volume (L)	455-1543
Drag Coefficient (Cd)	-
Approach Angle (°)	19
Departure Angle (°)	21

Gearbox

Abbreviation	7-speed dry dual clutch
Number of Gears	7
Transmission Type	Dry Dual-Clutch Transmission (DCT)

Chassis steering

Drive Type	Front-engine, Front-wheel drive (FF)
Front Suspension Type	MacPherson independent suspension
Rear Suspension Type	Multi-link independent suspension
Power Steering Type	Electric power assistance
Vehicle structure	bearing type

Seat Configuration

Seat Material	<ul style="list-style-type: none">• Imitation leather
Main seat adjustment	<ul style="list-style-type: none">• Front and rear adjustment;• Backrest adjustment;• Height adjustment (4-way);• Lumbar support (4-way)
Co-seat adjustment method	<ul style="list-style-type: none">• Front and rear adjustment;• Backrest adjustment;• Height adjustment (2-way)
Electric adjustment of driver's seat and passenger seat	Main/Deputy-
Front passenger seat rear adjustable buttons	-
Rear seat folding	<ul style="list-style-type: none">• Proportional down
Front/rear center armrest	Front •/Rear •
Rear cup holder	<ul style="list-style-type: none">•

Active safety

Anti-lock Braking System (ABS)	<ul style="list-style-type: none">•
Electronic Brakeforce Distribution (EBD/CBC)	<ul style="list-style-type: none">•

Active safety (continued)

Brake Assist System (EBA/BAS/BA)	•
Traction Control System (ASR/TCS/TRC)	•
Electronic Stability Control (ESC/ESP/DSC)	•
Tire Pressure Monitoring System (TPMS)	• Tire pressure alarm
Seat Belt Reminder	• Full vehicle
ISOFIX Child Seat Anchors	•
Lane Departure Warning System (LDWS)	•
Autonomous Emergency Braking (AEB)	•
Driver Fatigue Detection	•
Forward Collision Warning (FCW)	•
Emergency Call System (eCall)	•

Air conditioning/refrigerator

Air conditioning temperature control method	• Automatic air conditioning
Rear Independent Climate Control	-
Rear seat air vents	•
Temperature zone control	•
Car air purifier	-
In-cabin PM2.5 Filter	•

Passive safety

Driver/passenger airbag	Main •/Deputy •
Front/rear side airbags	Front •/Rear-
Front/rear head airbags (curtain airbags)	Front •/Rear •

Wheel brake

Front Brake Type	Ventilation disc
Rear Brake Type	Disc
Parking brake type	Electronic Parking
Front Tire Size	225/50 R18

Wheel brake (continued)

Rear Tire Size	225/50 R18
Spare Tire Size	Not full-size
Spare tire placement	In the trunk

Audio/Interior Lighting

Number of speakers	• 6 speakers
---------------------------	--------------

Driving functions

Navigation traffic information display	○
Lane assist	•
Lane Keeping Assist System	•
Cruise control system	• Full speed adaptive cruise
Satellite navigation system	○
Driving assistance level	•L2
Lane centering	•
Driver assistance systems	•IQ. Drive
Parking Assist	-

Exterior lighting

Low beam light source	•LED
High beam light source	•LED
LED daytime running lights	•
Adaptive high and low beam	-
Automatic headlights	•
Height-adjustable headlights	•
Headlight Delay Off	•

Exterior mirrors

Exterior mirror function	•Electric adjustment; •Electric folding; •Rearview mirror heating; •Automatically turn down when reversing; •Automatically fold when locking the car
---------------------------------	------------------------------------------------------------------------------------------------------------------------------------------------------

Appearance/anti-theft

Rim material	• Aluminum alloy
Electric trunk	○

Appearance/anti-theft (continued)

Electronic engine immobilizer	<ul style="list-style-type: none">•
Central locking system in the car	<ul style="list-style-type: none">•
Key Type	<ul style="list-style-type: none">• Remote key
Keyless start system	<ul style="list-style-type: none">•
Keyless entry function	<ul style="list-style-type: none">• Front row
Electric trunk position memory	<ul style="list-style-type: none">○
Roof rack	<ul style="list-style-type: none">•

Skylight/Glass

Sunroof Type	<ul style="list-style-type: none">• Openable panoramic sunroof
Front/rear electric windows	Front •/Rear •
One-touch window lifting function	<ul style="list-style-type: none">• Full vehicle
Window anti-pinch function	<ul style="list-style-type: none">•
Car makeup mirror	<ul style="list-style-type: none">• Main driver's lamp; • co-pilot's lamp
Rear wiper	<ul style="list-style-type: none">•
Rain sensor wiper function	<ul style="list-style-type: none">• Rainfall-sensing

Interior and exterior color

Exterior Color	White Moon #F5F5F5 Moon Obsidian Ash #323232 Moon Blue #174B94 Yuehui Silver #C9D1D3 Moon Frost Green #326F7A
Interior Color	Black Blue #000000 #40637E Black Golden #000000 #917367

Steering wheel/interior mirror

Steering Wheel Material	<ul style="list-style-type: none">• Cortex
Steering wheel position adjustment	<ul style="list-style-type: none">• Manual up and down front and rear adjustment
Multi-function steering wheel	<ul style="list-style-type: none">•
Heated Steering Wheel	-
Steering wheel memory	-
Trip computer display screen	<ul style="list-style-type: none">• Color

Steering wheel/interior mirror (continued)

Full LCD instrument panel	○
LCD instrument size	• 8 inches; ○ 10.25 inches
Interior rearview mirror function	• Manual anti-glare
Gear shifting	• Mechanical gear shift

Intelligent configuration

Connected Car Services	•
OTA Updates	○
4G/5G Network	•4G
Mobile APP remote function	• Vehicle status check/diagnostics; • Vehicle location / find my car
Wi-Fi hotspots	•

Driving Control

Automatic parking	•
Hill start assist	•
Engine start-stop technology	•

Driving Hardware

Front/rear parking radar	Front-/Rear •
Driving Assistance Camera System	• Reversing image
Front perception camera	• Monocular
Number of cameras	• 4
Number of ultrasonic radars	• 4

In-car charging

Multimedia/charging port	•USB; •Type-C
Number of USB/Type-C ports	• 1 in the front row/2 in the back row
Mobile phone wireless charging function	• Front row
Luggage compartment 12V power socket	•

"●" = Standard equipment

"□" = Not available

"○" = Optional equipment.

Note: These are Chinese market vehicles. Warranty coverage is not available outside of China.