

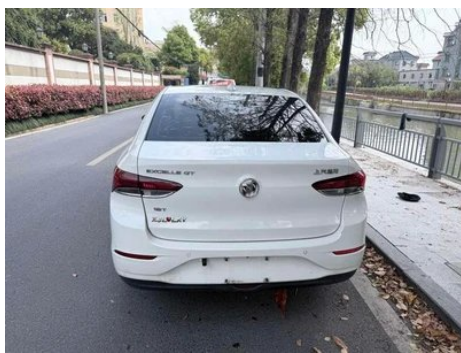
Vehicle Detail Report

Excele GT 2019 18T Auto-connected Elite
country VI

Basic Information

Brand	Buick
Mileage	65,000 km
Color	White
First Registration	2020-01-01
Transfer Count	0

Vehicle Images





Vehicle Condition

1. Hood, Paint repair. 2. Right front door, Bodywork repair. 3. Left rear door, Paint repair. 4. Right rear door, Bodywork repair. 5. Trunk lid, Paint repair. 6. Left front fender, Bodywork repair. 7. Right front fender, Replaced. 8. Right headlight, Replaced. 9. Armrest box, Damaged.

Configuration Information

Model Information

Model Name	Excelle GT 2019 18T Auto-connected Elite country VI
Launch Date	2018.12

Basic parameters

Vehicle Class	compact car
Energy Type	Gasoline
Maximum Power (kW)	120
Maximum Torque (N·m)	230
Transmission	6-speed manual integration
Body Type	Sedan
Engine	1.3L 163 hp L3
Dimensions (L×W×H) (mm)	4609*1798*1486
Official 0-100 km/h Acceleration (s)	-
Top Speed (km/h)	195
Curb Weight (kg)	1260
Maximum Gross Weight (kg)	-
NEDC Combined Fuel Consumption (L/100km)	5.8

engine

Engine Model	-
Displacement (mL)	1349
Displacement (L)	1.3
Induction Type	Turbocharging

engine (continued)

Cylinder Arrangement	L
Number of Cylinders	3
Valves per Cylinder	4
Valve Train	DOHC
Maximum Power (PS)	163
Max Power Speed (rpm)	5500
Max Torque Speed (rpm)	1800-4400
Maximum net power (kW)	-
Fuel Grade	92.
Fuel Delivery System	Multi-point EFI
Cylinder Head Material	Aluminum alloy
Cylinder Block Material	Aluminum alloy

Screen/System

Central control color screen	<ul style="list-style-type: none">• Touch LCD screen
Infotainment Screen Size	<ul style="list-style-type: none">• 7 inches
Bluetooth/In-car Phone	<ul style="list-style-type: none">•
Smartphone Integration/Mirroring	<ul style="list-style-type: none">• Support CarPlay;• Support CarLife
Voice recognition control system	<ul style="list-style-type: none">• Multimedia system;• Telephone

Body

Length (mm)	4609
Width (mm)	1798
Height (mm)	1486
Wheelbase (mm)	2640
Front Track (mm)	1538
Rear Track (mm)	1541
Door Opening Type	swing door
Number of Doors	4
Number of Seats	5
Fuel Tank Capacity (L)	44
Trunk volume (L)	-
Drag Coefficient (Cd)	-
Approach Angle (°)	14

Body (continued)

Departure Angle (°)	15
----------------------------	----

Gearbox

Abbreviation	6-speed manual integration
Number of Gears	6
Transmission Type	Automatic Transmission with Manual Mode (AT)

Chassis steering

Drive Type	Front-engine, Front-wheel drive (FF)
Front Suspension Type	MacPherson independent suspension
Rear Suspension Type	Multi-link independent suspension
Power Steering Type	Electric power assistance
Vehicle structure	bearing type

Seat Configuration

Seat Material	• Leather
Main seat adjustment	• Front and rear adjustment; • Backrest adjustment; • Height adjustment (2-way)
Co-seat adjustment method	• Front and rear adjustment; • Backrest adjustment
Electric adjustment of driver's seat and passenger seat	-
Front passenger seat rear adjustable buttons	-
Rear seat folding	• Proportional down
Front/rear center armrest	Front •/Rear-
Rear cup holder	-

Active safety

Anti-lock Braking System (ABS)	•
Electronic Brakeforce Distribution (EBD/CBC)	•
Brake Assist System (EBA/BAS/BA)	•
Traction Control System (ASR/TCS/TRC)	•
Electronic Stability Control (ESC/ESP/DSC)	•

Active safety (continued)

Tire Pressure Monitoring System (TPMS)	• Tire pressure display
Seat Belt Reminder	• Front row
ISOFIX Child Seat Anchors	•
Lane Departure Warning System (LDWS)	-
Autonomous Emergency Braking (AEB)	-
Driver Fatigue Detection	-
Emergency Call System (eCall)	•

Air conditioning/refrigerator

Air conditioning temperature control method	• Automatic air conditioning
Rear Independent Climate Control	-
Rear seat air vents	•
Temperature zone control	-
Car air purifier	-
In-cabin PM2.5 Filter	•

Passive safety

Driver/passenger airbag	Main •/Deputy •
Front/rear side airbags	Front •/Rear-
Front/rear head airbags (curtain airbags)	-

Wheel brake

Front Brake Type	Ventilation disc
Rear Brake Type	Disc
Parking brake type	handbrake
Front Tire Size	205/55 R16
Rear Tire Size	205/55 R16
Spare Tire Size	Not full-size

Audio/Interior Lighting

Number of speakers	• 7 speakers
---------------------------	--------------

Driving functions

Navigation traffic information display	•
---	---

Driving functions (continued)

Lane assist	-
Lane Keeping Assist System	-
Cruise control system	• Cruise control
Satellite navigation system	•
Parking Assist	-

Exterior lighting

Low beam light source	•LED
High beam light source	•LED
LED daytime running lights	•
Adaptive high and low beam	-
Automatic headlights	•
Height-adjustable headlights	•
Headlight Delay Off	•

Exterior mirrors

Exterior mirror function	• Electric adjustment; • Mirror heating
---------------------------------	---

Appearance/anti-theft

Rim material	• Aluminum alloy
Electric trunk	-
Electronic engine immobilizer	•
Central locking system in the car	•
Key Type	• Remote key
Keyless start system	-
Remote start function	•

Skylight/Glass

Sunroof Type	• Electric sunroof
Front/rear electric windows	Front •/Rear •
One-touch window lifting function	• Driving position
Window anti-pinch function	•

Skylight/Glass (continued)

Car makeup mirror	<ul style="list-style-type: none">• co-pilot light
Rear wiper	-

Interior and exterior color

Exterior Color	Wheat field gold:#B6A593, Agate, Red:#B50C07; Snowy, White:#FFFFFF, Meteor iron ash:#606063
Interior Color	Black:#000000

Steering wheel/interior mirror

Steering Wheel Material	<ul style="list-style-type: none">• Leather
Steering wheel position adjustment	<ul style="list-style-type: none">• Manual up and down adjustment
Multi-function steering wheel	<ul style="list-style-type: none">•
Heated Steering Wheel	-
Steering wheel memory	-
Trip computer display screen	<ul style="list-style-type: none">• Color
Full LCD instrument panel	-
LCD instrument size	<ul style="list-style-type: none">• 3.5 inches
Interior rearview mirror function	<ul style="list-style-type: none">• Automatic anti-glare

Intelligent configuration

Connected Car Services	<ul style="list-style-type: none">•
OTA Updates	<ul style="list-style-type: none">•

Driving Control

Automatic parking	-
Hill start assist	<ul style="list-style-type: none">•
Engine start-stop technology	<ul style="list-style-type: none">•

Driving Hardware

Front/rear parking radar	Front-/Rear <ul style="list-style-type: none">•
Driving Assistance Camera System	<ul style="list-style-type: none">• Reversing image

In-car charging

Multimedia/charging port	<ul style="list-style-type: none">•USB;•AUX;•SD
Number of USB/Type-C ports	<ul style="list-style-type: none">• 2 in the front row

"●" = Standard equipment

"□" = Not available

"○" = Optional equipment.

Note: These are Chinese market vehicles. Warranty coverage is not available outside of China.