

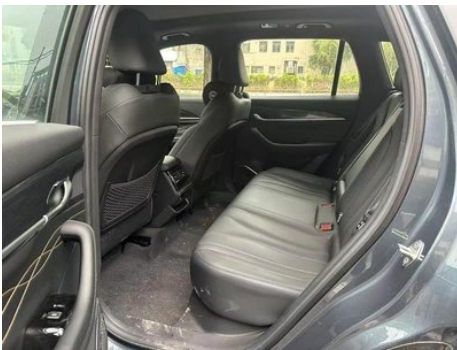
Vehicle Detail Report

Manjaro 2024 2.0TD DCT EVO Two-drive long wind version

Basic Information

| | |
|--------------------|------------|
| Brand | Geely |
| Mileage | 2,000 km |
| Color | Dark gray |
| First Registration | 2025-08-01 |
| Transfer Count | 0 |

Vehicle Images





Vehicle Condition

1. Original metal panels and factory paint.

Configuration Information

Model Information

| | |
|--------------------|--|
| Model Name | Manjaro 2024 2.0TD DCT EVO Two-Drive Long Wind Edition |
| Launch Date | 2024.03 |

Basic parameters

| | |
|---|-------------------------|
| Vehicle Class | Compact SUV |
| Energy Type | Gasoline |
| Maximum Power (kW) | 160 |
| Maximum Torque (N·m) | 325 |
| Transmission | 7-speed wet dual-clutch |
| Body Type | SUV |
| Engine | 2.0L 218 hp L4 |
| Dimensions (L×W×H) (mm) | 4770*1895*1689 |
| Official 0-100 km/h Acceleration (s) | 7.9 |
| Top Speed (km/h) | 215 |
| Curb Weight (kg) | 1675 |
| Maximum Gross Weight (kg) | 2130 |
| NEDC Combined Fuel Consumption (L/100km) | 6.8 |
| WLTP Combined Fuel Consumption (L/100km) | 7.5 |

engine

| | |
|--------------------------|---------------|
| Engine Model | JLH-4G20TDJ |
| Displacement (mL) | 1969 |
| Displacement (L) | 2.0 |
| Induction Type | Turbocharging |

engine (continued)

| | |
|--------------------------------|------------------|
| Cylinder Arrangement | L |
| Number of Cylinders | 4 |
| Valves per Cylinder | 4 |
| Valve Train | DOHC |
| Maximum Power (PS) | 218 |
| Max Power Speed (rpm) | - |
| Max Torque Speed (rpm) | - |
| Maximum net power (kW) | 160 |
| Fuel Grade | 95. |
| Fuel Delivery System | Direct injection |
| Cylinder Head Material | Aluminum alloy |
| Cylinder Block Material | Aluminum alloy |
| Engine layout | Horizontal |

Screen/System

| | |
|---|---|
| Central control color screen | <ul style="list-style-type: none">• Touch LCD screen |
| Infotainment Screen Size | <ul style="list-style-type: none">• 12.3 inches |
| Bluetooth/In-car Phone | <ul style="list-style-type: none">• |
| Smartphone Integration/ Mirroring | <ul style="list-style-type: none">• Support HUAWEI HiCar |
| Voice recognition control system | <ul style="list-style-type: none">• Multimedia system;• Navigation;• Telephone;• Air conditioning;• Sunroof |
| Voice wake-up recognition by region | <ul style="list-style-type: none">• Four areas |
| In-vehicle intelligent system | <ul style="list-style-type: none">• Geely Galaxy OS 2.0 |
| App Store | <ul style="list-style-type: none">• |
| Central control screen resolution | <ul style="list-style-type: none">•1920x720 |
| Central control screen pixel density | <ul style="list-style-type: none">•167PPI |
| Passenger entertainment screen size | <ul style="list-style-type: none">• 12.3 inches |
| Passenger screen resolution | <ul style="list-style-type: none">•1920x720 |
| Passenger screen pixel density | <ul style="list-style-type: none">•167PPI |

Screen/System (continued)

| | |
|---|--|
| Voice assistant wake-up word | <ul style="list-style-type: none">Hello, Geely |
| Voice wake-up word-free | <ul style="list-style-type: none"> |
| Car Intelligent Chip | <ul style="list-style-type: none">Qualcomm Snapdragon 8155 |
| Multi-finger flying screen control | <ul style="list-style-type: none"> |

Body

| | |
|-------------------------------|------------|
| Length (mm) | 4770 |
| Width (mm) | 1895 |
| Height (mm) | 1689 |
| Wheelbase (mm) | 2845 |
| Front Track (mm) | 1610 |
| Rear Track (mm) | 1610 |
| Door Opening Type | swing door |
| Number of Doors | 5 |
| Number of Seats | 5 |
| Fuel Tank Capacity (L) | 55 |
| Trunk volume (L) | 562 |
| Drag Coefficient (Cd) | - |
| Approach Angle (°) | 19 |
| Departure Angle (°) | 19 |

Gearbox

| | |
|--------------------------|------------------------------------|
| Abbreviation | 7-speed wet dual-clutch |
| Number of Gears | 7 |
| Transmission Type | Wet Dual-Clutch Transmission (DCT) |

Chassis steering

| | |
|------------------------------|--------------------------------------|
| Drive Type | Front-engine, Front-wheel drive (FF) |
| Front Suspension Type | MacPherson independent suspension |
| Rear Suspension Type | Multi-link independent suspension |
| Power Steering Type | Electric power assistance |
| Vehicle structure | bearing type |

Seat Configuration

| | |
|----------------------|---|
| Seat Material | <ul style="list-style-type: none">Imitation leather |
|----------------------|---|

Seat Configuration (continued)

| | |
|--|---|
| Main seat adjustment | <ul style="list-style-type: none">• Front and rear adjustment;• Backrest adjustment;• Height adjustment (4-way);• Lumbar support (4-way) |
| Co-seat adjustment method | <ul style="list-style-type: none">• Front and rear adjustment;• Backrest adjustment;• Height adjustment (2-way) |
| Electric adjustment of driver's seat and passenger seat | Main •/Deputy • |
| Front seat functions | <ul style="list-style-type: none">• Heating;• Ventilation (driving position only) |
| Electric seat memory function | <ul style="list-style-type: none">• Driving position |
| Front passenger seat rear adjustable buttons | - |
| Second row seat adjustment | <ul style="list-style-type: none">• Backrest adjustment |
| Rear seat folding | <ul style="list-style-type: none">• Proportional down |
| Front/rear center armrest | Front •/Rear • |
| Rear cup holder | <ul style="list-style-type: none">• |

Active safety

| | |
|---|---|
| Anti-lock Braking System (ABS) | <ul style="list-style-type: none">• |
| Electronic Brakeforce Distribution (EBD/CBC) | <ul style="list-style-type: none">• |
| Brake Assist System (EBA/BAS/BA) | <ul style="list-style-type: none">• |
| Traction Control System (ASR/TCS/TRC) | <ul style="list-style-type: none">• |
| Electronic Stability Control (ESC/ESP/DSC) | <ul style="list-style-type: none">• |
| Tire Pressure Monitoring System (TPMS) | <ul style="list-style-type: none">• Tire pressure display |
| Seat Belt Reminder | <ul style="list-style-type: none">• Front row |
| ISOFIX Child Seat Anchors | <ul style="list-style-type: none">• |
| Lane Departure Warning System (LDWS) | <ul style="list-style-type: none">• |
| Autonomous Emergency Braking (AEB) | <ul style="list-style-type: none">• |
| Driver Fatigue Detection | - |

Active safety (continued)

| | |
|--|---|
| Forward Collision Warning (FCW) | • |
| Emergency Call System (eCall) | • |

Air conditioning/refrigerator

| | |
|--|------------------------------|
| Air conditioning temperature control method | • Automatic air conditioning |
| Rear Independent Climate Control | - |
| Rear seat air vents | • |
| Temperature zone control | • |
| Car air purifier | - |
| In-cabin PM2.5 Filter | • |

Passive safety

| | |
|--|-----------------|
| Driver/passenger airbag | Main •/Deputy • |
| Front/rear side airbags | Front •/Rear- |
| Front/rear head airbags (curtain airbags) | Front •/Rear • |

Wheel brake

| | |
|-----------------------------|--------------------|
| Front Brake Type | Ventilation disc |
| Rear Brake Type | Disc |
| Parking brake type | Electronic Parking |
| Front Tire Size | 235/50 R19 |
| Rear Tire Size | 235/50 R19 |
| Spare Tire Size | Not full-size |
| Spare tire placement | In the trunk |

Audio/Interior Lighting

| | |
|----------------------------------|--------------|
| Number of speakers | • 8 speakers |
| Interior ambient lighting | • 72 Colors |

Driving functions

| | |
|---|------------------------------|
| Navigation traffic information display | • |
| Lane assist | - |
| Lane Keeping Assist System | • |
| Cruise control system | • Full speed adaptive cruise |

Driving functions (continued)

| | |
|--------------------------------------|--|
| Satellite navigation system | <ul style="list-style-type: none">• |
| Driving assistance level | <ul style="list-style-type: none">•L2 |
| Lane centering | <ul style="list-style-type: none">• |
| Road traffic sign recognition | <ul style="list-style-type: none">• |
| Map Brand | <ul style="list-style-type: none">• Gaud |
| Parking Assist | <ul style="list-style-type: none">- |

Exterior lighting

| | |
|-------------------------------------|--|
| Low beam light source | <ul style="list-style-type: none">•LED |
| High beam light source | <ul style="list-style-type: none">•LED |
| LED daytime running lights | <ul style="list-style-type: none">• |
| Adaptive high and low beam | <ul style="list-style-type: none">• |
| Automatic headlights | <ul style="list-style-type: none">• |
| Height-adjustable headlights | <ul style="list-style-type: none">• |
| Headlight Delay Off | <ul style="list-style-type: none">• |
| Lighting features | <ul style="list-style-type: none">• Matrix |

Exterior mirrors

| | |
|---------------------------------|---|
| Exterior mirror function | <ul style="list-style-type: none">• Electric adjustment;• Electric folding;• Rearview mirror heating;• Automatic folding when locked |
|---------------------------------|---|

Appearance/anti-theft

| | |
|--|--|
| Rim material | <ul style="list-style-type: none">• Aluminum alloy |
| Electric trunk | <ul style="list-style-type: none">• |
| Electronic engine immobilizer | <ul style="list-style-type: none">• |
| Central locking system in the car | <ul style="list-style-type: none">• |
| Key Type | <ul style="list-style-type: none">• Remote key |
| Keyless start system | <ul style="list-style-type: none">• |
| Keyless entry function | <ul style="list-style-type: none">• Front row |
| Hands-free Trunk | <ul style="list-style-type: none">• |
| Electric trunk position memory | <ul style="list-style-type: none">• |
| Roof rack | <ul style="list-style-type: none">• |

Appearance/anti-theft (continued)

| | |
|------------------------------|---|
| Remote start function | <ul style="list-style-type: none">• |
|------------------------------|---|

Skylight/Glass

| | |
|---|---|
| Sunroof Type | <ul style="list-style-type: none">• Openable panoramic sunroof |
| Front/rear electric windows | Front •/Rear • |
| One-touch window lifting function | <ul style="list-style-type: none">• Full car |
| Window anti-pinch function | <ul style="list-style-type: none">• |
| Car makeup mirror | <ul style="list-style-type: none">• Main driver's lamp; • co-pilot's lamp |
| Rear wiper | <ul style="list-style-type: none">• |
| Rain sensor wiper function | <ul style="list-style-type: none">• Rainfall-sensing |
| Side window multi-layer soundproof glass | <ul style="list-style-type: none">• Front row |

Interior and exterior color

| | |
|-----------------------|---|
| Exterior Color | Oyster white:#F1F5F8; Aurora silver:#CFD3D3; Basalt gray:#4C5764; Moyu black:#000000; Cui Yu blue:#27526C |
| Interior Color | Moon Shadow Black:#000000 |

Steering wheel/interior mirror

| | |
|---|--|
| Steering Wheel Material | <ul style="list-style-type: none">• Cortex |
| Steering wheel position adjustment | <ul style="list-style-type: none">• Manual up and down front and rear adjustment |
| Multi-function steering wheel | <ul style="list-style-type: none">• |
| Heated Steering Wheel | - |
| Steering wheel memory | - |
| Trip computer display screen | <ul style="list-style-type: none">• Color |
| Full LCD instrument panel | <ul style="list-style-type: none">• |
| LCD instrument size | <ul style="list-style-type: none">• 12.3 inches |
| Interior rearview mirror function | <ul style="list-style-type: none">• Manual anti-glare |
| Gear shifting | <ul style="list-style-type: none">• Electronic gear shift |

Intelligent configuration

| | |
|-------------------------------|---|
| Connected Car Services | <ul style="list-style-type: none">• |
|-------------------------------|---|

Intelligent configuration (continued)

| | |
|-----------------------------------|-----|
| OTA Updates | • |
| 4G/5G Network | •4G |
| Mobile APP remote function | • |
| Wi-Fi hotspots | • |

Driving Control

| | |
|-------------------------------------|--|
| Driving mode switch | • Sport; • Economy; • Standard/Comfort; • Snow |
| Automatic parking | • |
| Steep slope descent | • |
| Hill start assist | • |
| Engine start-stop technology | • |

Driving Hardware

| | |
|---|------------------------------|
| Front/rear parking radar | Front •/Rear • |
| Driving Assistance Camera System | • 360-degree panoramic image |
| Front perception camera | • Monocular |
| Number of cameras | • 5 |
| Number of ultrasonic radars | •8 pieces |
| Transparent chassis/540-degree imaging | • |

In-car charging

| | |
|---|--|
| Multimedia/charging port | •USB;•Type-C |
| Number of USB/Type-C ports | • 2 in the front row/2 in the back row |
| Luggage compartment 12V power socket | • |

"●" = Standard equipment

"-" = Not available

"○" = Optional equipment.

Note: These are Chinese market vehicles. Warranty coverage is not available outside of China.