

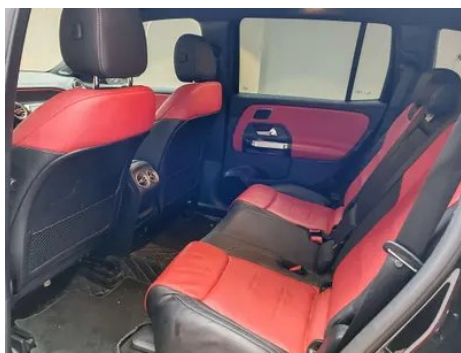
# Vehicle Detail Report

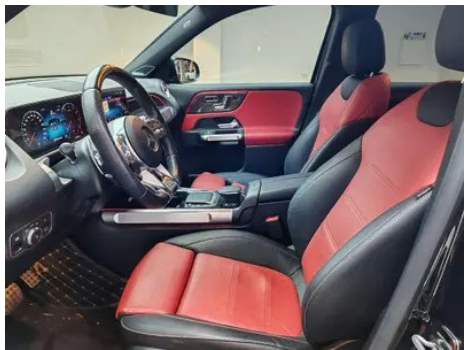
## Mercedes-Benz GLB AMG 2021 AMG GLB 35 4MATIC

### Basic Information

|                    |               |
|--------------------|---------------|
| Brand              | Mercedes-Benz |
| Mileage            | 54,000 km     |
| Color              | Black         |
| First Registration | 2021-10-01    |
| Transfer Count     | 1             |

### Vehicle Images







## Vehicle Condition

1. Inner side of left B-pillar, Non-accident-related deformation. 2. Right rear quarter panel, Deformation.

## Configuration Information

### Model Information

|                    |  |
|--------------------|--|
| <b>Model Name</b>  | Mercedes-Benz GLB AMG 2021 AMG GLB 35 4MATIC |
| <b>Launch Date</b> | 2020.11                                      |

### Basic parameters

|   |                         |
|---|-------------------------|
| <b>Vehicle Class</b>                            | Compact SUV             |
| <b>Energy Type</b>                              | Gasoline                |
| <b>Maximum Power (kW)</b>                       | 225                     |
| <b>Maximum Torque (N·m)</b>                     | 400                     |
| <b>Transmission</b>                             | 8-speed wet dual-clutch |
| <b>Body Type</b>                                | SUV                     |
| <b>Engine</b>                                   | 2.0T 306 horsepower L4  |
| <b>Dimensions (L×W×H) (mm)</b>                  | 4650*1845*1663          |
| <b>Official 0-100 km/h Acceleration (s)</b>     | 5.2                     |
| <b>Top Speed (km/h)</b>                         | 250                     |
| <b>Curb Weight (kg)</b>                         | -                       |
| <b>Maximum Gross Weight (kg)</b>                | -                       |
| <b>NEDC Combined Fuel Consumption (L/100km)</b> | 8.4                     |

### engine

|                             |               |
|-----------------------------|---------------|
| <b>Engine Model</b>         | 260 920       |
| <b>Displacement (mL)</b>    | 1991          |
| <b>Displacement (L)</b>     | 2.0           |
| <b>Induction Type</b>       | Turbocharging |
| <b>Cylinder Arrangement</b> | L             |

## engine (continued)

|                                |                  |
|--------------------------------|------------------|
| <b>Number of Cylinders</b>     | 4                |
| <b>Valves per Cylinder</b>     | 4                |
| <b>Valve Train</b>             | DOHC             |
| <b>Maximum Power (PS)</b>      | 306              |
| <b>Max Power Speed (rpm)</b>   | 5800             |
| <b>Max Torque Speed (rpm)</b>  | 3000-4000        |
| <b>Maximum net power (kW)</b>  | 225              |
| <b>Fuel Grade</b>              | 95.              |
| <b>Fuel Delivery System</b>    | Direct injection |
| <b>Cylinder Head Material</b>  | Aluminum alloy   |
| <b>Cylinder Block Material</b> | Aluminum alloy   |
| <b>Engine layout</b>           | Horizontal       |

## Screen/System

|   |  |
|---|--|
| <b>Central control color screen</b>     | <ul style="list-style-type: none"><li>• Touch LCD screen</li></ul>   |
| <b>Infotainment Screen Size</b>         | <ul style="list-style-type: none"><li>• 10.25 inches</li></ul>   |
| <b>Bluetooth/In-car Phone</b>           | <ul style="list-style-type: none"><li>•</li></ul>  |
| <b>Smartphone Integration/Mirroring</b> | <ul style="list-style-type: none"><li>• Apple CarPlay support;</li><li>• Baidu CarLife support</li></ul>                                   |
| <b>Voice recognition control system</b> | <ul style="list-style-type: none"><li>• Multimedia system;</li><li>• Navigation;</li><li>• Telephone;</li><li>• Air conditioning</li></ul> |

## Body

|                               |            |
|-------------------------------|------------|
| <b>Length (mm)</b>            | 4650       |
| <b>Width (mm)</b>             | 1845       |
| <b>Height (mm)</b>            | 1663       |
| <b>Wheelbase (mm)</b>         | 2829       |
| <b>Front Track (mm)</b>       | -          |
| <b>Rear Track (mm)</b>        | -          |
| <b>Door Opening Type</b>      | swing door |
| <b>Number of Doors</b>        | 5          |
| <b>Number of Seats</b>        | 5          |
| <b>Fuel Tank Capacity (L)</b> | 60         |
| <b>Trunk volume (L)</b>       | -          |
| <b>Drag Coefficient (Cd)</b>  | -          |
| <b>Approach Angle (°)</b>     | 16.3       |

## Body (continued)

|                            |      |
|----------------------------|------|
| <b>Departure Angle (°)</b> | 19.9 |
|----------------------------|------|

## Gearbox

|                          |                                    |
|--------------------------|------------------------------------|
| <b>Abbreviation</b>      | 8-speed wet dual-clutch            |
| <b>Number of Gears</b>   | 8                                  |
| <b>Transmission Type</b> | Wet Dual-Clutch Transmission (DCT) |

## Chassis steering

|                                       |                                       |
|---------------------------------------|---------------------------------------|
| <b>Drive Type</b>                     | Front-engine, All-wheel drive (F-AWD) |
| <b>Four-wheel drive</b>               | Timely four-wheel drive               |
| <b>Central differential structure</b> | Multi-plate clutch                    |
| <b>Front Suspension Type</b>          | MacPherson independent suspension     |
| <b>Rear Suspension Type</b>           | Multi-link independent suspension     |
| <b>Power Steering Type</b>            | Electric power assistance             |
| <b>Vehicle structure</b>              | bearing type                          |

## Seat Configuration

|  |  |
|--|--|
| <b>Seat Material</b>   | • Leather  |
| <b>Main seat adjustment</b>                                    | • Front and rear adjustment; • Backrest adjustment; • Height adjustment (4-way); • Leg rest adjustment; • Lumbar support (4-way) |
| <b>Co-seat adjustment method</b>                               | • Front and rear adjustment; • Backrest adjustment; • Height adjustment (4-way); • Leg rest adjustment; • Lumbar support (4-way) |
| <b>Electric adjustment of driver's seat and passenger seat</b> | Main •/Deputy •  |
| <b>Front seat functions</b>                                    | • Heating  |
| <b>Electric seat memory function</b>                           | • driving position; • co-pilot position  |
| <b>Front passenger seat rear adjustable buttons</b>            | -  |
| <b>Second row seat adjustment</b>                              | • Front and rear adjustment; • Backrest adjustment   |
| <b>Rear seat folding</b>                                       | • Proportional down  |
| <b>Front/rear center armrest</b>                               | Front •/Rear •   |
| <b>Rear cup holder</b>   | •  |

## Seat Configuration (continued)

|                           |                   |
|---------------------------|-------------------|
| <b>Sports style seats</b> | •                 |
| <b>Seat Layout</b>        | ○2-3-2(USD 1,471) |

## Active safety

|   |                         |
|---|-------------------------|
| <b>Anti-lock Braking System (ABS)</b>               | •                       |
| <b>Electronic Brakeforce Distribution (EBD/CBC)</b> | •                       |
| <b>Brake Assist System (EBA/BAS/BA)</b>             | •                       |
| <b>Traction Control System (ASR/TCS/TRC)</b>        | •                       |
| <b>Electronic Stability Control (ESC/ESP/DSC)</b>   | •                       |
| <b>Tire Pressure Monitoring System (TPMS)</b>       | • Tire pressure display |
| <b>Seat Belt Reminder</b>                           | • Front row             |
| <b>ISOFIX Child Seat Anchors</b>                    | •                       |
| <b>Lane Departure Warning System (LDWS)</b>         | ○                       |
| <b>Autonomous Emergency Braking (AEB)</b>           | •                       |
| <b>Driver Fatigue Detection</b>                     | •                       |
| <b>Emergency Call System (eCall)</b>                | •                       |
| <b>Built-in Dashcam</b>                             | •                       |

## Air conditioning/refrigerator

|  |                              |
|--|------------------------------|
| <b>Air conditioning temperature control method</b> | • Automatic air conditioning |
| <b>Rear Independent Climate Control</b>            | -                            |
| <b>Rear seat air vents</b>                         | •                            |
| <b>Temperature zone control</b>                    | •                            |
| <b>Car air purifier</b>                            | -                            |
| <b>In-cabin PM2.5 Filter</b>                       | -                            |

## Passive safety

|                                |                 |
|--------------------------------|-----------------|
| <b>Driver/passenger airbag</b> | Main •/Deputy • |
| <b>Front/rear side airbags</b> | Front •/Rear ○  |

## Passive safety (continued)

|  |                |
|--|----------------|
| <b>Front/rear head airbags (curtain airbags)</b> | Front •/Rear • |
|--|----------------|

## Wheel brake

|                           |                    |
|---------------------------|--------------------|
| <b>Front Brake Type</b>   | Ventilation disc   |
| <b>Rear Brake Type</b>    | Ventilation disc   |
| <b>Parking brake type</b> | Electronic Parking |
| <b>Front Tire Size</b>    | 235/50 R19         |
| <b>Rear Tire Size</b>     | 235/50 R19         |
| <b>Spare Tire Size</b>    | None               |

## Audio/Interior Lighting

|                                  |  |
|----------------------------------|--|
| <b>Speaker Brand Name</b>        | <input type="radio"/> Burmester Voices of Berlin |
| <b>Number of speakers</b>        | • 7 horn; <input type="radio"/> 12 horn          |
| <b>Interior ambient lighting</b> | • 64 colors                                      |

## Driving functions

|   |  |
|---|--|
| <b>Navigation traffic information display</b> | •  |
| <b>Lane assist</b>                            | <input type="radio"/>  |
| <b>Lane Keeping Assist System</b>             | <input type="radio"/>  |
| <b>Cruise control system</b>                  | • Cruise control; <input type="radio"/> Full speed adaptive cruise |
| <b>Satellite navigation system</b>            | •  |
| <b>AR real-time navigation</b>                | •  |
| <b>Parking Assist</b>                         | •  |

## Exterior lighting

|                                     |                            |
|-------------------------------------|----------------------------|
| <b>Low beam light source</b>        | •LED                       |
| <b>High beam light source</b>       | •LED                       |
| <b>LED daytime running lights</b>   | •                          |
| <b>Adaptive high and low beam</b>   | •                          |
| <b>Automatic headlights</b>         | •                          |
| <b>Height-adjustable headlights</b> | •                          |
| <b>Headlight Delay Off</b>          | •                          |
| <b>Lighting features</b>            | • MULTIBEAM LED headlights |

## Exterior lighting (continued)

|                        |   |
|------------------------|---|
| <b>Turn headlights</b> | <ul style="list-style-type: none"><li>•</li></ul> |
|------------------------|---|

## Exterior mirrors

|                                 |   |
|---------------------------------|---|
| <b>Exterior mirror function</b> | <ul style="list-style-type: none"><li>• Electric adjustment;</li><li>• Electric folding;</li><li>• Rearview mirror memory;</li><li>• Rearview mirror heating;</li><li>• Automatic downturning when reversing;</li><li>• Automatic folding when locked;</li><li>• Automatic anti-glare</li></ul> |
|---------------------------------|---|

## Appearance/anti-theft

|  |  |
|--|--|
| <b>Rim material</b>                      | <ul style="list-style-type: none"><li>• Aluminum alloy</li></ul> |
| <b>Electric trunk</b>                    | <ul style="list-style-type: none"><li>•</li></ul>                |
| <b>Electronic engine immobilizer</b>     | <ul style="list-style-type: none"><li>•</li></ul>                |
| <b>Central locking system in the car</b> | <ul style="list-style-type: none"><li>•</li></ul>                |
| <b>Key Type</b>                          | <ul style="list-style-type: none"><li>• Remote key</li></ul>     |
| <b>Keyless start system</b>              | <ul style="list-style-type: none"><li>•</li></ul>                |
| <b>Keyless entry function</b>            | <ul style="list-style-type: none"><li>• Full vehicle</li></ul>   |
| <b>Appearance Kit</b>                    | <ul style="list-style-type: none"><li>• Sports style</li></ul>   |
| <b>Hands-free Trunk</b>                  | <ul style="list-style-type: none"><li>•</li></ul>                |
| <b>Electric trunk position memory</b>    | <ul style="list-style-type: none"><li>•</li></ul>                |
| <b>Roof rack</b>                         | <ul style="list-style-type: none"><li>•</li></ul>                |
| <b>Remote start function</b>             | <ul style="list-style-type: none"><li>•</li></ul>                |

## Skylight/Glass

|  |   |
|--|---|
| <b>Sunroof Type</b>                      | <ul style="list-style-type: none"><li>• Sectional electric sunroof</li></ul>                    |
| <b>Front/rear electric windows</b>       | Front •/Rear •  |
| <b>One-touch window lifting function</b> | <ul style="list-style-type: none"><li>• Full vehicle</li></ul>                                  |
| <b>Window anti-pinch function</b>        | <ul style="list-style-type: none"><li>•</li></ul>   |
| <b>Car makeup mirror</b>                 | <ul style="list-style-type: none"><li>• Main driver's lamp;</li><li>• co-pilot's lamp</li></ul> |
| <b>Rear wiper</b>                        | <ul style="list-style-type: none"><li>•</li></ul>   |
| <b>Rain sensor wiper function</b>        | <ul style="list-style-type: none"><li>• Rainfall-sensing</li></ul>                              |
| <b>Rear side privacy glass</b>           | <ul style="list-style-type: none"><li>•</li></ul>   |

## Interior and exterior color

## Interior and exterior color (continued)

|                       |  |
|-----------------------|--|
| <b>Exterior Color</b> | Lava Red #68211F Iridium Silver #B9B9B9 Arctic White #FFFFFF Hoshino Blue #3C3A70 dark night #090605 Washed blue #3B5F8F dimensional white #DEDEDE mountain ash #5C5951 Cosmic Black #110C0A |
| <b>Interior Color</b> | Black Classic red #000000 #9B1C29 Black Pearlescent Titanium Grey #000000 #5E5F61  |

## Steering wheel/interior mirror

|   |  |
|---|--|
| <b>Steering Wheel Material</b>            | <ul style="list-style-type: none"><li>• Leather</li></ul>                                      |
| <b>Steering wheel position adjustment</b> | <ul style="list-style-type: none"><li>• Manual up and down front and rear adjustment</li></ul> |
| <b>Multi-function steering wheel</b>      | <ul style="list-style-type: none"><li>•</li></ul>  |
| <b>Heated Steering Wheel</b>              | -  |
| <b>Steering wheel memory</b>              | -  |
| <b>Trip computer display screen</b>       | <ul style="list-style-type: none"><li>• Color</li></ul>  |
| <b>Full LCD instrument panel</b>          | <ul style="list-style-type: none"><li>•</li></ul>  |
| <b>LCD instrument size</b>                | <ul style="list-style-type: none"><li>• 10.25 inches</li></ul>                                 |
| <b>Interior rearview mirror function</b>  | <ul style="list-style-type: none"><li>• Automatic anti-glare</li></ul>                         |
| <b>HUD Head Up Digital Display</b>        | ○  |
| <b>Steering Wheel Shift Paddles</b>       | <ul style="list-style-type: none"><li>•</li></ul>  |

## Intelligent configuration

|                               |   |
|-------------------------------|---|
| <b>Connected Car Services</b> | <ul style="list-style-type: none"><li>•</li></ul> |
| <b>OTA Updates</b>            | <ul style="list-style-type: none"><li>•</li></ul> |

## Driving Control

|                                     |   |
|-------------------------------------|---|
| <b>Driving mode switch</b>          | <ul style="list-style-type: none"><li>• Sport; • Standard/Comfort; • Snow</li></ul> |
| <b>Automatic parking</b>            | <ul style="list-style-type: none"><li>•</li></ul>                                   |
| <b>Hill start assist</b>            | <ul style="list-style-type: none"><li>•</li></ul>                                   |
| <b>Variable suspension function</b> | <ul style="list-style-type: none"><li>• Suspension damping adjustment</li></ul>     |
| <b>Variable steering ratio</b>      | <ul style="list-style-type: none"><li>•</li></ul>                                   |
| <b>Engine start-stop technology</b> | <ul style="list-style-type: none"><li>•</li></ul>                                   |

## Driving Hardware

## Driving Hardware (continued)

|   |   |
|---|---|
| <b>Front/rear parking radar</b>         | Front •/Rear •                                  |
| <b>Driving Assistance Camera System</b> | • Reversing image; ○ 360-degree panoramic image |

## In-car charging

|  |  |
|--|--|
| <b>Multimedia/charging port</b>                | •Type-C                                |
| <b>Number of USB/Type-C ports</b>              | • 3 in the front row/4 in the back row |
| <b>Mobile phone wireless charging function</b> | ○ Front row                            |

---

"●" = Standard equipment

"-" = Not available

"○" = Optional equipment.

Note: These are Chinese market vehicles. Warranty coverage is not available outside of China.