

Vehicle Detail Report

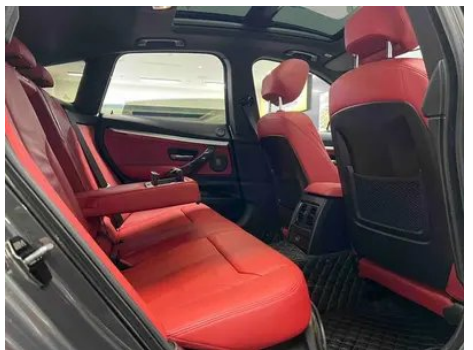
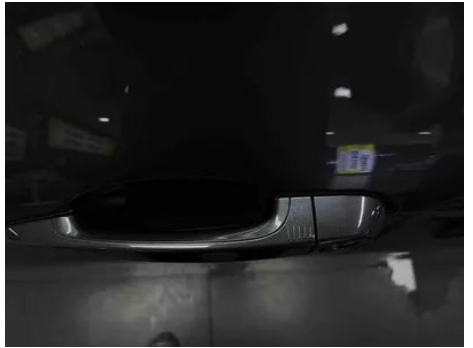
BMW 3 Series GT 2020 320i M Sports Obsidian Night Edition

Basic Information

Brand	BMW
Mileage	66,000 km
Color	Dark gray
First Registration	2020-09-01
Transfer Count	1

Vehicle Images







Vehicle Condition

1. Left rear quarter panel, Paint repair.

Configuration Information

Model Information

Model Name	BMW 3 Series GT 2020 320i M Sport Night Edition
Launch Date	2020.03

Basic parameters

Vehicle Class	Mid-size car
Energy Type	Gasoline
Maximum Power (kW)	135
Maximum Torque (N·m)	270
Transmission	8-gear manual integration
Body Type	Liftback
Engine	2.0L 184 hp L4
Dimensions (L×W×H) (mm)	4852*1828*1518
Official 0-100 km/h Acceleration (s)	8.1
Top Speed (km/h)	229
Curb Weight (kg)	-
Maximum Gross Weight (kg)	-
NEDC Combined Fuel Consumption (L/100km)	7.8

engine

Engine Model	B48B20A
Displacement (mL)	1998
Displacement (L)	2.0
Induction Type	Turbocharging
Cylinder Arrangement	L

engine (continued)

Number of Cylinders	4
Valves per Cylinder	4
Valve Train	DOHC
Bore (mm)	82
Stroke (mm)	94.6
Maximum Power (PS)	184
Max Power Speed (rpm)	5000
Max Torque Speed (rpm)	1350-4600
Maximum net power (kW)	135
Fuel Grade	95.
Fuel Delivery System	Direct injection
Cylinder Head Material	Aluminum alloy
Cylinder Block Material	Aluminum alloy
Engine layout	Longitudinal

Screen/System

Central control color screen	<ul style="list-style-type: none">• Touch LCD screen
Infotainment Screen Size	<ul style="list-style-type: none">• 8.8 inches
Bluetooth/In-car Phone	<ul style="list-style-type: none">•
Smartphone Integration/ Mirroring	<ul style="list-style-type: none">• Support CarPlay
Voice recognition control system	<ul style="list-style-type: none">• Multimedia system;• Navigation;• Telephone
In-car CD/DVD Player	<ul style="list-style-type: none">• Single DVD

Body

Length (mm)	4852
Width (mm)	1828
Height (mm)	1518
Wheelbase (mm)	2920
Front Track (mm)	-
Rear Track (mm)	-
Door Opening Type	-
Number of Doors	5
Number of Seats	5
Fuel Tank Capacity (L)	60

Body (continued)

Trunk volume (L)	-
Drag Coefficient (Cd)	-

Gearbox

Abbreviation	8-gear manual integration
Number of Gears	8
Transmission Type	Automatic Transmission with Manual Mode (AT)

Chassis steering

Drive Type	Front-engine, Rear-wheel drive (FR)
Front Suspension Type	Dual-ball-joint MacPherson independent suspension
Rear Suspension Type	Multi-link independent suspension
Power Steering Type	Electric power assistance
Vehicle structure	bearing type

Seat Configuration

Seat Material	• Leather
Main seat adjustment	• Front-to-back adjustment; • Backrest adjustment; • Height adjustment (4-way); • Leg rest adjustment; ○ Lumbar support (4-way) (USD 404)
Co-seat adjustment method	• Front-to-back adjustment; • Backrest adjustment; • Height adjustment (4-way); • Leg rest adjustment; ○ Lumbar support (4-way) (USD 404)
Electric adjustment of driver's seat and passenger seat	Main •/Deputy •
Front seat functions	○ Heating
Electric seat memory function	• Driving position
Front passenger seat rear adjustable buttons	-
Second row seat adjustment	• Backrest adjustment
Rear seat folding	• Proportional down
Front/rear center armrest	Front •/Rear •
Rear cup holder	•
Sports style seats	•

Active safety

Active safety (continued)

Anti-lock Braking System (ABS)	•
Electronic Brakeforce Distribution (EBD/CBC)	•
Brake Assist System (EBA/BAS/BA)	•
Traction Control System (ASR/TCS/TRC)	•
Electronic Stability Control (ESC/ESP/DSC)	•
Tire Pressure Monitoring System (TPMS)	• Tire pressure display
Seat Belt Reminder	• Front row
ISOFIX Child Seat Anchors	•
Lane Departure Warning System (LDWS)	-
Autonomous Emergency Braking (AEB)	-
Driver Fatigue Detection	•
Emergency Call System (eCall)	•

Air conditioning/refrigerator

Air conditioning temperature control method	• Automatic air conditioning
Rear Independent Climate Control	-
Rear seat air vents	•
Temperature zone control	•
Car air purifier	-
In-cabin PM2.5 Filter	-

Passive safety

Driver/passenger airbag	Main •/Deputy •
Front/rear side airbags	Front •/Rear-
Front/rear head airbags (curtain airbags)	Front •/Rear •
Run-flat tires	•

Wheel brake

Front Brake Type	Ventilation disc
-------------------------	------------------

Wheel brake (continued)

Rear Brake Type	Ventilation disc
Parking brake type	handbrake
Front Tire Size	225/50 R18
Rear Tire Size	255/45 R18
Spare Tire Size	None

Audio/Interior Lighting

Speaker Brand Name	• Harman/Kardon Harman Kardon
Number of speakers	• 16 speakers
Interior ambient lighting	• Two colors

Driving functions

Navigation traffic information display	•
Lane assist	-
Lane Keeping Assist System	-
Cruise control system	• Constant speed cruise; ○ Adaptive cruise (USD 1,250)
Satellite navigation system	•
Parking Assist	○

Exterior lighting

Low beam light source	•LED
High beam light source	•LED
LED daytime running lights	•
Adaptive high and low beam	-
Automatic headlights	•
Front fog lights	•LED
Height-adjustable headlights	•
Headlight Delay Off	•

Exterior mirrors

Exterior mirror function	• Electric adjustment; • Electric folding; • Rearview mirror memory; • Rearview mirror heating; • Automatic downturning when reversing; • Automatic folding when locked; • Automatic anti-glare
---------------------------------	---

Appearance/anti-theft

Rim material	• Aluminum alloy
Electric trunk	•
Electronic engine immobilizer	•
Central locking system in the car	•
Key Type	• Remote key
Keyless start system	•
Keyless entry function	• Front row
Appearance Kit	• Sports style
Hands-free Trunk	•
Electric trunk position memory	•
Frameless door design	•
Electric spoiler	•

Skylight/Glass

Sunroof Type	• Openable panoramic sunroof
Front/rear electric windows	Front •/Rear •
One-touch window lifting function	• Full car
Window anti-pinch function	•
Car makeup mirror	• Main driver's lamp; • co-pilot's lamp
Rear wiper	-
Rain sensor wiper function	• Rainfall-sensing

Interior and exterior color

Exterior Color	Ore ash:#949A9C; Gem green:#242224; Estolan:#143594; Glacier silver:#949A9C; Ore white:#E7E7E7; Snow mountain white:#FAFAFA
Interior Color	Black/Coral Red:#000000/#F75800; Black/Veneto Beige:#000000/#BEBEBE; Black:#000000; Black/Cognac:#000000/#E48233; Black/Pearl White:#000000/#EBDEEB

Steering wheel/interior mirror

Steering Wheel Material	• Leather
--------------------------------	-----------

Steering wheel/interior mirror (continued)

Steering wheel position adjustment	• Manual up and down front and rear adjustment
Multi-function steering wheel	•
Heated Steering Wheel	○
Steering wheel memory	-
Trip computer display screen	• Color
Full LCD instrument panel	•
LCD instrument size	• 10.25 inches
Interior rearview mirror function	• Automatic anti-glare
HUD Head Up Digital Display	○
Steering Wheel Shift Paddles	•

Intelligent configuration

Connected Car Services	•
OTA Updates	-

Driving Control

Driving mode switch	• Sport; • Economy; • Standard/Comfort
Automatic parking	-
Hill start assist	•
Engine start-stop technology	•

Driving Hardware

Front/rear parking radar	Front •/Rear •
Driving Assistance Camera System	• 360-degree panoramic image

In-car charging

Multimedia/charging port	•USB
Number of USB/Type-C ports	• 1 in the front row
Mobile phone wireless charging function	○ Front row
Luggage compartment 12V power socket	•

Optional Package

Optional Package (continued)

Optional Package	Winter package (USD 588; Including: steering wheel heating function, front seat heating function); Entertainment package (USD 735; Including: front adjustable armrest box, mobile phone wireless charging, WiFi hotspot, free WiFi data flow package); Innovative package (USD 1,471; Including: full-color head-up display system, automatic parking assist system,)
-------------------------	--

"●" = Standard equipment

"_" = Not available

"○" = Optional equipment.

Note: These are Chinese market vehicles. Warranty coverage is not available outside of China.