

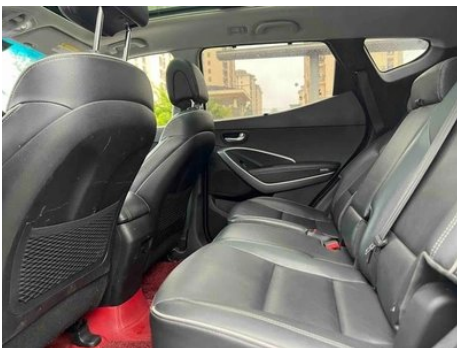
Vehicle Detail Report

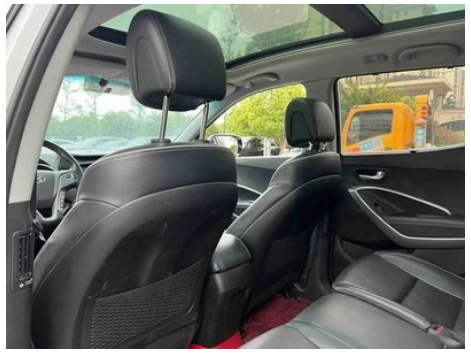
Hyundai Shengda 2017 2.4L Automatic two-drive intelligent type 5 seat

Basic Information

Brand	Hyundai
Mileage	89,300 km
Color	White
First Registration	2017-11-01
Transfer Count	0

Vehicle Images





Vehicle Condition

1. Left rear quarter panel, Paint repair.

Configuration Information

Model Information

Model Name	Hyundai Shengda 2017 2.4L Automatic two-drive intelligent type 5 seat
Launch Date	2016.09

Basic parameters

Vehicle Class	Mid-size SUV
Energy Type	Gasoline
Maximum Power (kW)	139

Basic parameters (continued)

Maximum Torque (N·m)	240
Transmission	6-speed manual integration
Body Type	SUV
Engine	2.4L 189 horsepower L4
Dimensions (L×W×H) (mm)	4730*1880*1686
Official 0-100 km/h Acceleration (s)	-
Top Speed (km/h)	195
Curb Weight (kg)	1670
Maximum Gross Weight (kg)	-
NEDC Combined Fuel Consumption (L/100km)	9

engine

Engine Model	-
Displacement (mL)	2359
Displacement (L)	2.4
Induction Type	Natural aspiration
Cylinder Arrangement	L
Number of Cylinders	4
Valves per Cylinder	4
Valve Train	DOHC
Maximum Power (PS)	189
Max Power Speed (rpm)	6300
Max Torque Speed (rpm)	4250
Maximum net power (kW)	-
Fuel Grade	92.
Fuel Delivery System	Direct injection
Cylinder Head Material	Aluminum alloy
Cylinder Block Material	Aluminum alloy

Screen/System

Central control color screen	<ul style="list-style-type: none">• Touch LCD screen
Infotainment Screen Size	<ul style="list-style-type: none">• 8 inches
Bluetooth/In-car Phone	<ul style="list-style-type: none">•

Screen/System (continued)

Smartphone Integration/ Mirroring	• Apple CarPlay support; • Baidu CarLife support
--	--

Body

Length (mm)	4730
Width (mm)	1880
Height (mm)	1686
Wheelbase (mm)	2700
Front Track (mm)	-
Rear Track (mm)	-
Door Opening Type	-
Number of Doors	5
Number of Seats	5
Fuel Tank Capacity (L)	64
Trunk volume (L)	-
Drag Coefficient (Cd)	-

Gearbox

Abbreviation	6-speed manual integration
Number of Gears	6
Transmission Type	Automatic Transmission with Manual Mode (AT)

Chassis steering

Drive Type	Front-engine, Front-wheel drive (FF)
Front Suspension Type	MacPherson independent suspension
Rear Suspension Type	Multi-link independent suspension
Power Steering Type	Electric power assistance
Vehicle structure	bearing type

Seat Configuration

Seat Material	• Imitation leather
Main seat adjustment	• Front and rear adjustment; • Backrest adjustment; • Height adjustment (4-way); • Lumbar support (4-way)
Co-seat adjustment method	• Front and rear adjustment; • Backrest adjustment
Electric adjustment of driver's seat and passenger seat	Main/Deputy-

Seat Configuration (continued)

Front passenger seat rear adjustable buttons	-
Second row seat adjustment	• Front and rear adjustment; • Backrest adjustment
Rear seat folding	• Proportional down
Front/rear center armrest	Front •/Rear •
Rear cup holder	•

Active safety

Anti-lock Braking System (ABS)	•
Electronic Brakeforce Distribution (EBD/CBC)	•
Brake Assist System (EBA/BAS/BA)	•
Traction Control System (ASR/TCS/TRC)	•
Electronic Stability Control (ESC/ESP/DSC)	•
Tire Pressure Monitoring System (TPMS)	• Tire pressure display
Seat Belt Reminder	• Front row
ISOFIX Child Seat Anchors	•
Lane Departure Warning System (LDWS)	-
Autonomous Emergency Braking (AEB)	-
Driver Fatigue Detection	-

Air conditioning/refrigerator

Air conditioning temperature control method	• Automatic air conditioning
Rear Independent Climate Control	-
Rear seat air vents	•
Temperature zone control	•
Car air purifier	-
In-cabin PM2.5 Filter	•
Negative ion generator	•

Passive safety

Passive safety (continued)

Driver/passenger airbag	Main •/Deputy •
Front/rear side airbags	Front •/Rear-
Front/rear head airbags (curtain airbags)	-

Wheel brake

Front Brake Type	Ventilation disc
Rear Brake Type	Disc
Parking brake type	Electronic Parking
Front Tire Size	235/60 R18
Rear Tire Size	235/60 R18
Spare Tire Size	Full size

Audio/Interior Lighting

Number of speakers	• 6 speakers
---------------------------	--------------

Driving functions

Navigation traffic information display	-
Lane assist	-
Lane Keeping Assist System	-
Cruise control system	• Cruise control
Satellite navigation system	-
Parking Assist	-

Exterior lighting

Low beam light source	• Halogen
High beam light source	• Halogen
LED daytime running lights	•
Adaptive high and low beam	-
Automatic headlights	•
Front fog lights	• Halogen
Height-adjustable headlights	•
Headlight Delay Off	•
Turn signal lamp	•

Exterior mirrors

Exterior mirrors (continued)

Exterior mirror function	<ul style="list-style-type: none">• Electric adjustment;• Electric folding;• Rearview mirror heating;• Automatic folding when locked
---------------------------------	---

Appearance/anti-theft

Rim material	<ul style="list-style-type: none">• Aluminum alloy
Electric trunk	-
Electronic engine immobilizer	<ul style="list-style-type: none">•
Central locking system in the car	<ul style="list-style-type: none">•
Key Type	<ul style="list-style-type: none">• Remote key
Keyless start system	<ul style="list-style-type: none">•
Keyless entry function	<ul style="list-style-type: none">• Front row
Roof rack	<ul style="list-style-type: none">•

Skylight/Glass

Sunroof Type	<ul style="list-style-type: none">• Openable panoramic sunroof
Front/rear electric windows	Front •/Rear •
One-touch window lifting function	<ul style="list-style-type: none">• Driving position
Window anti-pinch function	<ul style="list-style-type: none">•
Car makeup mirror	<ul style="list-style-type: none">• Main driver's lamp;• co-pilot's lamp
Rear wiper	<ul style="list-style-type: none">•
Rear side window sunshades	<ul style="list-style-type: none">• Manual

Interior and exterior color

Exterior Color	Phantom Black #010101 Earth Brown #AC864B Rose red #D63B5B Dream Silver #AAB4B6 Mocha Brown #63412F Magic Gray #ADB1B2 Beach Gold #ADA158 Crystal White #FFFFFF Space Blue #3F5388 Wildfield Green #363B34
Interior Color	Black:#000000

Steering wheel/interior mirror

Steering Wheel Material	<ul style="list-style-type: none">• Leather
Steering wheel position adjustment	<ul style="list-style-type: none">• Manual up and down front and rear adjustment

Steering wheel/interior mirror (continued)

Multi-function steering wheel	•
Heated Steering Wheel	-
Steering wheel memory	-
Trip computer display screen	• Color
Full LCD instrument panel	-
Interior rearview mirror function	• Automatic anti-glare

Intelligent configuration

Connected Car Services	-
OTA Updates	-

Driving Control

Driving mode switch	• Sport; • Economy; • Standard/Comfort
Automatic parking	•
Steep slope descent	•
Hill start assist	•

Driving Hardware

Front/rear parking radar	Front-/Rear •
Driving Assistance Camera System	• Reversing image

In-car charging

Multimedia/charging port	•USB;•AUX;•SD
Number of USB/Type-C ports	• 1 in the front row
Luggage compartment 12V power socket	•

"●" = Standard equipment

"-" = Not available

"○" = Optional equipment.

Note: These are Chinese market vehicles. Warranty coverage is not available outside of China.