

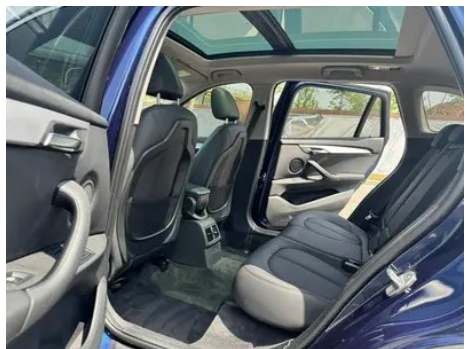
Vehicle Detail Report

BMW X1 2019 sDrive20Li Leading Type

Basic Information

Brand	BMW
Mileage	81,000 km
Color	Blue
First Registration	2019-02-01
Transfer Count	0

Vehicle Images





Vehicle Condition

1. Right rear quarter panel, Paint repair, Body panel repair.

Configuration Information

Model Information

Model Name	BMW X1 2019 sDrive20Li Leading Type
Launch Date	2018.10

Basic parameters

Vehicle Class	Compact SUV
Energy Type	Gasoline
Maximum Power (kW)	141
Maximum Torque (N·m)	280

Basic parameters (continued)

Transmission	8-gear manual integration
Body Type	SUV
Engine	2.0L 192 hp L4
Dimensions (L×W×H) (mm)	4565*1821*1624
Official 0-100 km/h Acceleration (s)	8.2
Top Speed (km/h)	220
Curb Weight (kg)	1619
Maximum Gross Weight (kg)	-
NEDC Combined Fuel Consumption (L/100km)	6.5

engine

Engine Model	-
Displacement (mL)	1998
Displacement (L)	2.0
Induction Type	Turbocharging
Cylinder Arrangement	L
Number of Cylinders	4
Valves per Cylinder	4
Valve Train	DOHC
Bore (mm)	82
Stroke (mm)	94.6
Maximum Power (PS)	192
Max Power Speed (rpm)	5000-6000
Max Torque Speed (rpm)	1250-4600
Maximum net power (kW)	-
Fuel Grade	95.
Fuel Delivery System	Direct injection
Cylinder Head Material	Aluminum alloy
Cylinder Block Material	Aluminum alloy

Screen/System

Central control color screen	•
Infotainment Screen Size	•6.5 inches

Screen/System (continued)

Bluetooth/In-car Phone	<ul style="list-style-type: none">•
Voice recognition control system	<ul style="list-style-type: none">• Multimedia system;• Navigation;• Telephone

Body

Length (mm)	4565
Width (mm)	1821
Height (mm)	1624
Wheelbase (mm)	2780
Front Track (mm)	1561
Rear Track (mm)	1562
Door Opening Type	-
Number of Doors	5
Number of Seats	5
Fuel Tank Capacity (L)	61
Trunk volume (L)	505
Drag Coefficient (Cd)	-

Gearbox

Abbreviation	8-gear manual integration
Number of Gears	8
Transmission Type	Automatic Transmission with Manual Mode (AT)

Chassis steering

Drive Type	Front-engine, Front-wheel drive (FF)
Front Suspension Type	MacPherson independent suspension
Rear Suspension Type	Multi-link independent suspension
Power Steering Type	Electric power assistance
Vehicle structure	bearing type

Seat Configuration

Seat Material	<ul style="list-style-type: none">• Imitation leather
Main seat adjustment	<ul style="list-style-type: none">• Front and rear adjustment;• Backrest adjustment;• Height adjustment (4-way);○ Lumbar support (4-way)
Co-seat adjustment method	<ul style="list-style-type: none">• Front and rear adjustment;• Backrest adjustment;• Height adjustment (4-way);○ Lumbar support (4-way)

Seat Configuration (continued)

Electric adjustment of driver's seat and passenger seat	Main •/Deputy •
Front seat functions	○ Heating (USD 441)
Electric seat memory function	• Driving position
Front passenger seat rear adjustable buttons	-
Second row seat adjustment	• Front and rear adjustment; • Backrest adjustment
Rear seat folding	• Proportional down
Front/rear center armrest	Front •/Rear •
Rear cup holder	•

Active safety

Anti-lock Braking System (ABS)	•
Electronic Brakeforce Distribution (EBD/CBC)	•
Brake Assist System (EBA/BAS/BA)	•
Traction Control System (ASR/TCS/TRC)	•
Electronic Stability Control (ESC/ESP/DSC)	•
Tire Pressure Monitoring System (TPMS)	• Tire pressure alarm
Seat Belt Reminder	• Front row
ISOFIX Child Seat Anchors	•
Lane Departure Warning System (LDWS)	-
Autonomous Emergency Braking (AEB)	-
Driver Fatigue Detection	-
Emergency Call System (eCall)	•

Air conditioning/refrigerator

Air conditioning temperature control method	• Automatic air conditioning
Rear Independent Climate Control	-

Air conditioning/refrigerator (continued)

Rear seat air vents	•
Temperature zone control	•
Car air purifier	-
In-cabin PM2.5 Filter	-

Passive safety

Driver/passenger airbag	Main •/Deputy •
Front/rear side airbags	Front •/Rear-
Front/rear head airbags (curtain airbags)	Front •/Rear •
Run-flat tires	•

Wheel brake

Front Brake Type	Ventilation disc
Rear Brake Type	Disc
Parking brake type	Electronic Parking
Front Tire Size	225/50 R18
Rear Tire Size	225/50 R18
Spare Tire Size	None

Audio/Interior Lighting

Speaker Brand Name	<input type="radio"/> Harman/Kardon Harman Kardon
Number of speakers	• 7 horn; <input type="radio"/> 12 horn
Interior ambient lighting	• Two colors

Driving functions

Navigation traffic information display	-
Lane assist	-
Lane Keeping Assist System	-
Cruise control system	<input type="radio"/> Cruise control
Satellite navigation system	<input type="radio"/>
Parking Assist	<input type="radio"/>

Exterior lighting

Low beam light source	•LED
High beam light source	•LED
LED daytime running lights	•

Exterior lighting (continued)

Adaptive high and low beam	-
Automatic headlights	•
Front fog lights	• Halogen
Height-adjustable headlights	•
Headlight Delay Off	•

Exterior mirrors

Exterior mirror function	• Electric adjustment; • Electric folding; • Rearview mirror memory; • Rearview mirror heating; • Automatic downturning when reversing; ○ Automatic folding when locked; ○ Automatic anti-glare
---------------------------------	---

Appearance/anti-theft

Rim material	• Aluminum alloy
Electric trunk	•
Electronic engine immobilizer	•
Central locking system in the car	•
Key Type	• Remote key
Keyless start system	•
Keyless entry function	○ Front row
Hands-free Trunk	○
Electric trunk position memory	•
Roof rack	•

Skylight/Glass

Sunroof Type	• Openable panoramic sunroof
Front/rear electric windows	Front •/Rear •
One-touch window lifting function	• Full car
Window anti-pinch function	•
Car makeup mirror	• Main driver's lamp; • co-pilot's lamp
Rear wiper	•

Skylight/Glass (continued)

Rain sensor wiper function	<ul style="list-style-type: none">• Rainfall-sensing
-----------------------------------	--

Interior and exterior color

Exterior Color	Starlight Brown: #28160F; Valencia Orange: #FF660E; Gemstone Blue: #242224; Mediterranean Blue: #092A57; Cashmere Silver: #C6C1B4; Mineral White: #E7E7E7; Chestnut Copper Brown: #8A411B; Melbourne Red: #610303; Whirlwind Brown: #573E35; Snow Mountain White: #FAFAFA
Interior Color	Black:#000000

Steering wheel/interior mirror

Steering Wheel Material	<ul style="list-style-type: none">• Leather
Steering wheel position adjustment	<ul style="list-style-type: none">• Manual up and down front and rear adjustment
Multi-function steering wheel	<ul style="list-style-type: none">•
Heated Steering Wheel	-
Steering wheel memory	-
Trip computer display screen	<ul style="list-style-type: none">• Color
Full LCD instrument panel	-
Interior rearview mirror function	<ul style="list-style-type: none">• Automatic anti-glare

Intelligent configuration

Connected Car Services	○
OTA Updates	-

Driving Control

Driving mode switch	<ul style="list-style-type: none">• Sport;• Economy;• Standard/Comfort
Automatic parking	-
Hill start assist	<ul style="list-style-type: none">•
Engine start-stop technology	<ul style="list-style-type: none">•

Driving Hardware

Front/rear parking radar	Front ○/Rear •
Driving Assistance Camera System	<ul style="list-style-type: none">• Reversing image

In-car charging

In-car charging (continued)

Multimedia/charging port	•Type-C
Number of USB/Type-C ports	• 1 in the front row/2 in the back row
Luggage compartment 12V power socket	•

Optional Package

Optional Package	Comfort package (USD 588; includes: keyless entry (front door, trunk lid), including induction switch trunk lid, internal rearview mirror with automatic anti-glare function and driver's side external rearview mirror); Innovation package (USD 588; includes: front and rear parking distance alarms, automatic parking assist system, cruise control system with brake function)
-------------------------	--

"●" = Standard equipment

"_" = Not available

"○" = Optional equipment.

Note: These are Chinese market vehicles. Warranty coverage is not available outside of China.