

# Vehicle Detail Report

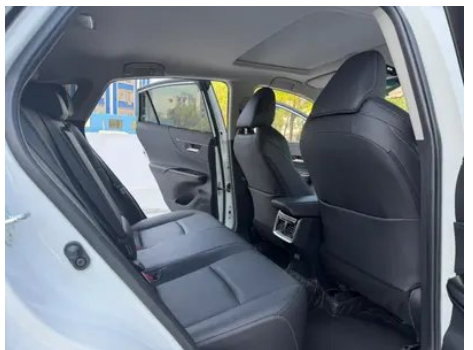
## Toyota Venza 2022 2.0L CVT Two-wheel-drive Prestige Edition

### Basic Information

Brand	Toyota
Mileage	44,000 km
Color	White
First Registration	2022-06-01
Transfer Count	0

### Vehicle Images







## Vehicle Condition

1. Left rear quarter panel, Paint repair, Body panel repair.

## Configuration Information

### Model Information

<b>Model Name</b>	Toyota Venza 2022 2.0L CVT Two-wheel-drive Prestige Edition
<b>Launch Date</b>	2022.01

### Basic parameters

<b>Vehicle Class</b>	Mid-size SUV
<b>Energy Type</b>	Gasoline
<b>Maximum Power (kW)</b>	126
<b>Maximum Torque (N·m)</b>	209
<b>Transmission</b>	CVT continuously variable (simulating 10 gears)
<b>Body Type</b>	SUV
<b>Engine</b>	2.0L 171 horsepower L4
<b>Dimensions (L×W×H) (mm)</b>	4780*1855*1660
<b>Official 0-100 km/h Acceleration (s)</b>	-
<b>Top Speed (km/h)</b>	175
<b>Curb Weight (kg)</b>	1615
<b>Maximum Gross Weight (kg)</b>	2065
<b>NEDC Combined Fuel Consumption (L/100km)</b>	5.9
<b>WLTP Combined Fuel Consumption (L/100km)</b>	6.5

### engine

<b>Engine Model</b>	M20C
<b>Displacement (mL)</b>	1987
<b>Displacement (L)</b>	2.0

## engine (continued)

<b>Induction Type</b>	Natural aspiration
<b>Cylinder Arrangement</b>	L
<b>Number of Cylinders</b>	4
<b>Valves per Cylinder</b>	4
<b>Compression Ratio</b>	13
<b>Valve Train</b>	DOHC
<b>Bore (mm)</b>	80.5
<b>Stroke (mm)</b>	97.6
<b>Maximum Power (PS)</b>	171
<b>Max Power Speed (rpm)</b>	6600
<b>Max Torque Speed (rpm)</b>	4400-5000
<b>Maximum net power (kW)</b>	126
<b>Fuel Grade</b>	92.
<b>Fuel Delivery System</b>	Mixed injection
<b>Cylinder Head Material</b>	Aluminum alloy
<b>Cylinder Block Material</b>	Aluminum alloy
<b>Engine layout</b>	Horizontal

## Screen/System

<b>Central control color screen</b>	<ul style="list-style-type: none"><li>• Touch LCD screen</li></ul>
<b>Infotainment Screen Size</b>	<ul style="list-style-type: none"><li>• 12.3 inches</li></ul>
<b>Bluetooth/In-car Phone</b>	<ul style="list-style-type: none"><li>•</li></ul>
<b>Voice recognition control system</b>	<ul style="list-style-type: none"><li>• Multimedia system;</li><li>• Navigation;</li><li>• Telephone;</li><li>• Air conditioning;</li><li>• Sunroof</li></ul>

## Body

<b>Length (mm)</b>	4780
<b>Width (mm)</b>	1855
<b>Height (mm)</b>	1660
<b>Wheelbase (mm)</b>	2690
<b>Front Track (mm)</b>	1607
<b>Rear Track (mm)</b>	1627
<b>Door Opening Type</b>	swing door
<b>Number of Doors</b>	5
<b>Number of Seats</b>	5

## Body (continued)

<b>Fuel Tank Capacity (L)</b>	55
<b>Trunk volume (L)</b>	-
<b>Drag Coefficient (Cd)</b>	-
<b>Approach Angle (°)</b>	16
<b>Departure Angle (°)</b>	20

## Gearbox

<b>Abbreviation</b>	CVT continuously variable (simulating 10 gears)
<b>Number of Gears</b>	10
<b>Transmission Type</b>	Continuously Variable Transmission (CVT)

## Chassis steering

<b>Drive Type</b>	Front-engine, Front-wheel drive (FF)
<b>Front Suspension Type</b>	MacPherson independent suspension
<b>Rear Suspension Type</b>	E-type multi-link independent suspension
<b>Power Steering Type</b>	Electric power assistance
<b>Vehicle structure</b>	bearing type

## Seat Configuration

<b>Seat Material</b>	• Genuine leather; • Faux leather
<b>Main seat adjustment</b>	• Front and rear adjustment; • Backrest adjustment; • Height adjustment (4-way); • Lumbar support (2-way)
<b>Co-seat adjustment method</b>	• Front and rear adjustment; • Backrest adjustment
<b>Electric adjustment of driver's seat and passenger seat</b>	Main •/Deputy •
<b>Front seat functions</b>	• Heating; • Ventilation
<b>Front passenger seat rear adjustable buttons</b>	-
<b>Second row seat adjustment</b>	• Backrest adjustment
<b>Rear seat folding</b>	• Proportional down
<b>Front/rear center armrest</b>	Front •/Rear •
<b>Rear cup holder</b>	•

## Active safety

## Active safety (continued)

<b>Anti-lock Braking System (ABS)</b>	•
<b>Electronic Brakeforce Distribution (EBD/CBC)</b>	•
<b>Brake Assist System (EBA/BAS/BA)</b>	•
<b>Traction Control System (ASR/TCS/TRC)</b>	•
<b>Electronic Stability Control (ESC/ESP/DSC)</b>	•
<b>Tire Pressure Monitoring System (TPMS)</b>	• Tire pressure display
<b>Seat Belt Reminder</b>	• Front row
<b>ISOFIX Child Seat Anchors</b>	•
<b>Lane Departure Warning System (LDWS)</b>	•
<b>Autonomous Emergency Braking (AEB)</b>	•
<b>Driver Fatigue Detection</b>	-
<b>Forward Collision Warning (FCW)</b>	•
<b>Emergency Call System (eCall)</b>	•

## Air conditioning/refrigerator

<b>Air conditioning temperature control method</b>	• Automatic air conditioning
<b>Rear Independent Climate Control</b>	-
<b>Rear seat air vents</b>	•
<b>Temperature zone control</b>	•
<b>Car air purifier</b>	-
<b>In-cabin PM2.5 Filter</b>	•

## Passive safety

<b>Driver/passenger airbag</b>	Main •/Deputy •
<b>Front/rear side airbags</b>	Front •/Rear-
<b>Front/rear head airbags (curtain airbags)</b>	Front •/Rear •
<b>Knee airbag</b>	• Driver's knee airbag

## Wheel brake

## Wheel brake (continued)

<b>Front Brake Type</b>	Ventilation disc
<b>Rear Brake Type</b>	Disc
<b>Parking brake type</b>	Electronic Parking
<b>Front Tire Size</b>	225/55 R19
<b>Rear Tire Size</b>	225/55 R19
<b>Spare Tire Size</b>	Not full-size

## Audio/Interior Lighting

<b>Speaker Brand Name</b>	•JBL
<b>Number of speakers</b>	• 9 speakers

## Driving functions

<b>Navigation traffic information display</b>	•
<b>Lane assist</b>	-
<b>Lane Keeping Assist System</b>	•
<b>Cruise control system</b>	• Full speed adaptive cruise
<b>Satellite navigation system</b>	•
<b>Driving assistance level</b>	•L2
<b>Lane centering</b>	•
<b>Driver assistance systems</b>	•Toyota Safety Sense
<b>Parking Assist</b>	-

## Exterior lighting

<b>Low beam light source</b>	•LED
<b>High beam light source</b>	•LED
<b>LED daytime running lights</b>	•
<b>Adaptive high and low beam</b>	•
<b>Automatic headlights</b>	•
<b>Front fog lights</b>	•LED
<b>Height-adjustable headlights</b>	•
<b>Headlight Delay Off</b>	-

## Exterior mirrors

## Exterior mirrors (continued)

<b>Exterior mirror function</b>	<ul style="list-style-type: none"><li>• Electric adjustment;</li><li>• Electric folding;</li><li>• Rearview mirror heating;</li><li>• Automatic folding when locked</li></ul>
---------------------------------	-------------------------------------------------------------------------------------------------------------------------------------------------------------------------------

## Appearance/anti-theft

<b>Rim material</b>	<ul style="list-style-type: none"><li>• Aluminum alloy</li></ul>
<b>Electric trunk</b>	<ul style="list-style-type: none"><li>•</li></ul>
<b>Electronic engine immobilizer</b>	<ul style="list-style-type: none"><li>•</li></ul>
<b>Central locking system in the car</b>	<ul style="list-style-type: none"><li>•</li></ul>
<b>Key Type</b>	<ul style="list-style-type: none"><li>• Remote key</li></ul>
<b>Keyless start system</b>	<ul style="list-style-type: none"><li>•</li></ul>
<b>Keyless entry function</b>	<ul style="list-style-type: none"><li>• Front row</li></ul>
<b>Hands-free Trunk</b>	<ul style="list-style-type: none"><li>•</li></ul>
<b>Electric trunk position memory</b>	<ul style="list-style-type: none"><li>•</li></ul>

## Skylight/Glass

<b>Sunroof Type</b>	Do not open the sunroof.
<b>Front/rear electric windows</b>	Front •/Rear •
<b>One-touch window lifting function</b>	<ul style="list-style-type: none"><li>• Full vehicle</li></ul>
<b>Window anti-pinch function</b>	<ul style="list-style-type: none"><li>•</li></ul>
<b>Car makeup mirror</b>	<ul style="list-style-type: none"><li>• Main driver's lamp;</li><li>• co-pilot's lamp</li></ul>
<b>Rear wiper</b>	<ul style="list-style-type: none"><li>•</li></ul>
<b>Rain sensor wiper function</b>	<ul style="list-style-type: none"><li>• Rainfall-sensing</li></ul>
<b>Rear side privacy glass</b>	<ul style="list-style-type: none"><li>•</li></ul>

## Interior and exterior color

<b>Exterior Color</b>	Yao Dung Red #9C1F0B Platinum Pearl White #DCE2E0 ink crystal black #000000 Opal Silver #D0D0D0 Titanium Silver #7C807F
<b>Interior Color</b>	Black:#414544; Black/Grey:#000000/#E6E6; Black/Brown:#000000/#7A4E41

## Steering wheel/interior mirror

<b>Steering Wheel Material</b>	<ul style="list-style-type: none"><li>• Leather</li></ul>
--------------------------------	-----------------------------------------------------------

## Steering wheel/interior mirror (continued)

<b>Steering wheel position adjustment</b>	<ul style="list-style-type: none"><li>• Manual up and down front and rear adjustment</li></ul>
<b>Multi-function steering wheel</b>	<ul style="list-style-type: none"><li>•</li></ul>
<b>Heated Steering Wheel</b>	-
<b>Steering wheel memory</b>	-
<b>Trip computer display screen</b>	<ul style="list-style-type: none"><li>• Color</li></ul>
<b>Full LCD instrument panel</b>	-
<b>LCD instrument size</b>	<ul style="list-style-type: none"><li>• 7 inches</li></ul>
<b>Interior rearview mirror function</b>	<ul style="list-style-type: none"><li>• Automatic anti-glare</li></ul>
<b>Gear shifting</b>	<ul style="list-style-type: none"><li>• Mechanical gear shift</li></ul>

## Intelligent configuration

<b>Connected Car Services</b>	<ul style="list-style-type: none"><li>•</li></ul>
<b>OTA Updates</b>	<ul style="list-style-type: none"><li>•</li></ul>
<b>4G/5G Network</b>	<ul style="list-style-type: none"><li>•4G</li></ul>
<b>Mobile APP remote function</b>	<ul style="list-style-type: none"><li>• Door control Lighting control Climate control Vehicle Condition Query Diagnosis Vehicle positioning Find car Car Owner Services (Find charging pile Gas station Parking, etc.) Appointment maintenance Maintenance</li></ul>

## Driving Control

<b>Driving mode switch</b>	<ul style="list-style-type: none"><li>• Sport; • Economy; • Standard/Comfort</li></ul>
<b>Automatic parking</b>	<ul style="list-style-type: none"><li>•</li></ul>
<b>Hill start assist</b>	<ul style="list-style-type: none"><li>•</li></ul>
<b>Engine start-stop technology</b>	<ul style="list-style-type: none"><li>•</li></ul>

## Driving Hardware

<b>Front/rear parking radar</b>	Front •/Rear •
<b>Driving Assistance Camera System</b>	<ul style="list-style-type: none"><li>• Reversing image</li></ul>
<b>Front perception camera</b>	<ul style="list-style-type: none"><li>• Monocular</li></ul>
<b>Number of cameras</b>	<ul style="list-style-type: none"><li>• 2</li></ul>
<b>Number of ultrasonic radars</b>	<ul style="list-style-type: none"><li>•8 pieces</li></ul>

## In-car charging

## In-car charging (continued)

<b>Multimedia/charging port</b>	•USB;•Type-C
<b>Number of USB/Type-C ports</b>	• 3 in the front row/2 in the back row

---

"●" = Standard equipment

"-" = Not available

"○" = Optional equipment.

Note: These are Chinese market vehicles. Warranty coverage is not available outside of China.