

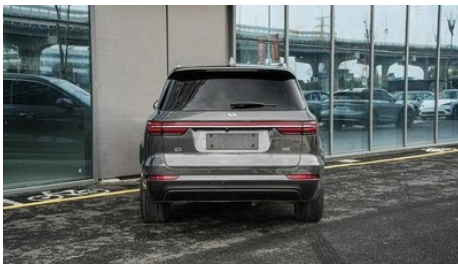
# Vehicle Detail Report

Li Auto ONE 2021 extended range 6 Seat plate

## Basic Information

Brand	Li Auto
Mileage	86,000 km
Color	Dark gray
First Registration	2021-12-01
Transfer Count	2

## Vehicle Images







## Vehicle Condition

1. Right rocker panel, Inner-side deformation. 2. Inner side of right B-pillar, Deformation. 3. Right rear quarter panel, Paint repair, Body panel repair.

## Configuration Information

### Model Information

<b>Model Name</b>	ONE 2021 extended 6-seat version
<b>Launch Date</b>	2021.05

### Basic parameters

<b>Vehicle Class</b>	Mid-size and large SUVs
<b>Energy Type</b>	Extended Range Electric Vehicle (EREV)
<b>Maximum Power (kW)</b>	96
<b>Maximum Torque (N·m)</b>	-
<b>Transmission</b>	Electric vehicle single speed gearbox
<b>Body Type</b>	SUV
<b>Engine</b>	Range-extended, 131 horsepower
<b>Dimensions (L×W×H) (mm)</b>	5030*1960*1760
<b>Official 0-100 km/h Acceleration (s)</b>	6.5
<b>Top Speed (km/h)</b>	172
<b>Curb Weight (kg)</b>	2300
<b>Maximum Gross Weight (kg)</b>	2825
<b>NEDC Electric Range (km)</b>	188
<b>Fast Charging Time (h)</b>	0.5
<b>Slow Charging Time (h)</b>	6
<b>Electric Motor (PS)</b>	333
<b>NEDC Combined Fuel Consumption (L/100km)</b>	1.5
<b>Fast Charging Range (%)</b>	80

## Basic parameters (continued)

<b>Electricity Consumption in Fuel Equivalent (L/100km)</b>	1.9
<b>WLTC Electric Range (km)</b>	148
<b>Fuel Consumption with Depleted Battery (L/100km)</b>	8.8
<b>WLTP Combined Fuel Consumption (L/100km)</b>	1.5

## engine

<b>Engine Model</b>	DAM12TD
<b>Displacement (mL)</b>	1199
<b>Displacement (L)</b>	1.2
<b>Induction Type</b>	Turbocharging
<b>Cylinder Arrangement</b>	L
<b>Number of Cylinders</b>	3
<b>Valves per Cylinder</b>	4
<b>Valve Train</b>	DOHC
<b>Maximum Power (PS)</b>	131
<b>Max Power Speed (rpm)</b>	5500
<b>Max Torque Speed (rpm)</b>	-
<b>Maximum net power (kW)</b>	96
<b>Fuel Grade</b>	95.
<b>Fuel Delivery System</b>	Direct injection
<b>Cylinder Head Material</b>	Aluminum alloy
<b>Cylinder Block Material</b>	Aluminum alloy
<b>Engine layout</b>	Horizontal

## Electric Motor

<b>Motor Type</b>	Permanent magnet/synchronous
<b>Total Electric Motor Power (kW)</b>	245
<b>Total Electric Motor Torque (N·m)</b>	455
<b>Front Electric Motor Max Power (kW)</b>	100
<b>Front Electric Motor Max Torque (N·m)</b>	240

## Electric Motor (continued)

<b>System total power (kW)</b>	245
<b>System comprehensive torque (N·m)</b>	455
<b>Number of drive motors</b>	Dual motors
<b>Motor Layout</b>	Front-mounted Rear-mounted
<b>Battery Type</b>	Ternary lithium battery
<b>Battery Capacity (kWh)</b>	40.5
<b>Total Electric Motor Power (PS)</b>	333
<b>Rear Electric Motor Max Power (kW)</b>	145
<b>Rear Electric Motor Max Torque (N·m)</b>	215
<b>Battery Cell Brand</b>	Contemporary Amperex Technology Co. Limited (CATL)
<b>Battery Cooling System</b>	Liquid cooling
<b>Power consumption per 100 kilometers (kWh/100km)</b>	16.9
<b>Fast charging function</b>	Support
<b>System comprehensive power (Ps)</b>	333
<b>Fast Charging Power (kW)</b>	60

## Screen/System

<b>Central control color screen</b>	<ul style="list-style-type: none"><li>• Touch LCD screen</li></ul>
<b>Infotainment Screen Size</b>	<ul style="list-style-type: none"><li>•16.2 inches</li></ul>
<b>Bluetooth/In-car Phone</b>	<ul style="list-style-type: none"><li>•</li></ul>
<b>Voice recognition control system</b>	<ul style="list-style-type: none"><li>• Multimedia system;</li><li>• Navigation;</li><li>• Telephone;</li><li>• Air conditioning;</li><li>• Sunroof</li></ul>
<b>Center console screen size</b>	<ul style="list-style-type: none"><li>• 10.1 inches</li></ul>
<b>Passenger entertainment screen size</b>	<ul style="list-style-type: none"><li>• 12.3 inches</li></ul>

## Body

<b>Length (mm)</b>	5030
<b>Width (mm)</b>	1960
<b>Height (mm)</b>	1760

## Body (continued)

<b>Wheelbase (mm)</b>	2935
<b>Front Track (mm)</b>	1652
<b>Rear Track (mm)</b>	1672
<b>Ground Clearance (Fully Loaded) (mm)</b>	180
<b>Door Opening Type</b>	swing door
<b>Number of Doors</b>	5
<b>Number of Seats</b>	6
<b>Fuel Tank Capacity (L)</b>	55
<b>Trunk volume (L)</b>	-
<b>Drag Coefficient (Cd)</b>	-
<b>Approach Angle (°)</b>	21
<b>Departure Angle (°)</b>	23

## Gearbox

<b>Abbreviation</b>	Electric vehicle single speed gearbox
<b>Number of Gears</b>	1
<b>Transmission Type</b>	Fixed Gear Ratio Transmission

## Chassis steering

<b>Drive Type</b>	Dual-motor All-wheel Drive
<b>Four-wheel drive</b>	Electric four-wheel drive
<b>Front Suspension Type</b>	MacPherson independent suspension
<b>Rear Suspension Type</b>	Multi-link independent suspension
<b>Power Steering Type</b>	Electric power assistance
<b>Vehicle structure</b>	bearing type

## Seat Configuration

<b>Seat Material</b>	<ul style="list-style-type: none"><li>• Leather</li></ul>
<b>Main seat adjustment</b>	<ul style="list-style-type: none"><li>• Front and rear adjustment;</li><li>• Backrest adjustment;</li><li>• Height adjustment (4-way);</li><li>• Lumbar support (4-way)</li></ul>
<b>Co-seat adjustment method</b>	<ul style="list-style-type: none"><li>• Front and rear adjustment;</li><li>• Backrest adjustment;</li><li>• Height adjustment (4-way);</li><li>• Lumbar support (4-way)</li></ul>

## Seat Configuration (continued)

<b>Electric adjustment of driver's seat and passenger seat</b>	Main •/Deputy •
<b>Front seat functions</b>	• Heating; • Ventilation; • Massage
<b>Electric seat memory function</b>	• Driving position
<b>Front passenger seat rear adjustable buttons</b>	•
<b>Second row seat adjustment</b>	• Front and rear adjustment; • Backrest adjustment; • Lumbar adjustment
<b>Rear seat folding</b>	• Proportional down
<b>Front/rear center armrest</b>	Front •/Rear •
<b>Rear cup holder</b>	•
<b>Second row seat functions</b>	• Heating; • Massage
<b>Seat Layout</b>	•2-2-2
<b>Second row independent seats</b>	•
<b>Second row seats electrically adjustable</b>	•

## Active safety

<b>Anti-lock Braking System (ABS)</b>	•
<b>Electronic Brakeforce Distribution (EBD/CBC)</b>	•
<b>Brake Assist System (EBA/BAS/BA)</b>	•
<b>Traction Control System (ASR/TCS/TRC)</b>	•
<b>Electronic Stability Control (ESC/ESP/DSC)</b>	•
<b>Tire Pressure Monitoring System (TPMS)</b>	• Tire pressure display
<b>Seat Belt Reminder</b>	• Front row; • Second row
<b>ISOFIX Child Seat Anchors</b>	•
<b>Lane Departure Warning System (LDWS)</b>	•
<b>Autonomous Emergency Braking (AEB)</b>	•
<b>Driver Fatigue Detection</b>	-

## Active safety (continued)

<b>Forward Collision Warning (FCW)</b>	•
<b>Low Speed Alert</b>	•
<b>Emergency Call System (eCall)</b>	•
<b>Built-in Dashcam</b>	•
<b>Door Opening Warning (DOW)</b>	•

## Air conditioning/refrigerator

<b>Air conditioning temperature control method</b>	• Automatic air conditioning
<b>Rear Independent Climate Control</b>	•
<b>Rear seat air vents</b>	•
<b>Temperature zone control</b>	•
<b>Car air purifier</b>	•
<b>In-cabin PM2.5 Filter</b>	•

## Passive safety

<b>Driver/passenger airbag</b>	Main •/Deputy •
<b>Front/rear side airbags</b>	Front •/Rear-
<b>Front/rear head airbags (curtain airbags)</b>	Front •/Rear •
<b>Knee airbag</b>	• Main driver knee airbag

## Wheel brake

<b>Front Brake Type</b>	Ventilation disc
<b>Rear Brake Type</b>	Ventilation disc
<b>Parking brake type</b>	Electronic Parking
<b>Front Tire Size</b>	255/50 R20
<b>Rear Tire Size</b>	255/50 R20
<b>Spare Tire Size</b>	None

## Audio/Interior Lighting

<b>Number of speakers</b>	• 12 speakers
<b>Interior ambient lighting</b>	• Monochrome
<b>Touch reading light</b>	•

## Driving functions

## Driving functions (continued)

<b>Navigation traffic information display</b>	<ul style="list-style-type: none"><li>•</li></ul>
<b>Lane assist</b>	<ul style="list-style-type: none"><li>•</li></ul>
<b>Lane Keeping Assist System</b>	<ul style="list-style-type: none"><li>•</li></ul>
<b>Cruise control system</b>	<ul style="list-style-type: none"><li>• Full speed adaptive cruise</li></ul>
<b>Satellite navigation system</b>	<ul style="list-style-type: none"><li>•</li></ul>
<b>Driving assistance level</b>	<ul style="list-style-type: none"><li>• L2</li></ul>
<b>Rear Cross Traffic Alert</b>	<ul style="list-style-type: none"><li>•</li></ul>
<b>Lane centering</b>	<ul style="list-style-type: none"><li>•</li></ul>
<b>Road traffic sign recognition</b>	<ul style="list-style-type: none"><li>•</li></ul>
<b>Map Brand</b>	<ul style="list-style-type: none"><li>• Amap; • Tencent</li></ul>
<b>High-precision map</b>	<ul style="list-style-type: none"><li>•</li></ul>
<b>Parking Assist</b>	<ul style="list-style-type: none"><li>•</li></ul>
<b>Lane Change Assist</b>	<ul style="list-style-type: none"><li>•</li></ul>

## Exterior lighting

<b>Low beam light source</b>	<ul style="list-style-type: none"><li>• LED</li></ul>
<b>High beam light source</b>	<ul style="list-style-type: none"><li>• LED</li></ul>
<b>LED daytime running lights</b>	<ul style="list-style-type: none"><li>•</li></ul>
<b>Adaptive high and low beam</b>	<ul style="list-style-type: none"><li>•</li></ul>
<b>Automatic headlights</b>	<ul style="list-style-type: none"><li>•</li></ul>
<b>Height-adjustable headlights</b>	<ul style="list-style-type: none"><li>•</li></ul>
<b>Headlight Delay Off</b>	<ul style="list-style-type: none"><li>-</li></ul>
<b>Turn signal lamp</b>	<ul style="list-style-type: none"><li>•</li></ul>

## Exterior mirrors

<b>Exterior mirror function</b>	<ul style="list-style-type: none"><li>• Electric adjustment; • Electric folding; • Rearview mirror memory; • Rearview mirror heating; • Automatic downturning when reversing; • Automatic folding when locked; • Automatic anti-glare</li></ul>
---------------------------------	---

## Appearance/anti-theft

<b>Rim material</b>	<ul style="list-style-type: none"><li>• Aluminum alloy</li></ul>
<b>Electric trunk</b>	<ul style="list-style-type: none"><li>•</li></ul>

## Appearance/anti-theft (continued)

<b>Electronic engine immobilizer</b>	<ul style="list-style-type: none"><li>•</li></ul>
<b>Central locking system in the car</b>	<ul style="list-style-type: none"><li>•</li></ul>
<b>Key Type</b>	<ul style="list-style-type: none"><li>• Remote key;</li><li>• Bluetooth key</li></ul>
<b>Keyless start system</b>	<ul style="list-style-type: none"><li>•</li></ul>
<b>Keyless entry function</b>	<ul style="list-style-type: none"><li>• Full car</li></ul>
<b>Hands-free Trunk</b>	<ul style="list-style-type: none"><li>•</li></ul>
<b>Electric trunk position memory</b>	<ul style="list-style-type: none"><li>•</li></ul>
<b>Roof rack</b>	<ul style="list-style-type: none"><li>•</li></ul>
<b>Remote start function</b>	<ul style="list-style-type: none"><li>•</li></ul>
<b>Battery preheating</b>	<ul style="list-style-type: none"><li>•</li></ul>
<b>Active closed grille</b>	<ul style="list-style-type: none"><li>•</li></ul>
<b>Electric door closing</b>	<ul style="list-style-type: none"><li>○ Full car (USD 882)</li></ul>
<b>Discharge to the outside</b>	<ul style="list-style-type: none"><li>•</li></ul>

## Skylight/Glass

<b>Sunroof Type</b>	<ul style="list-style-type: none"><li>• Openable panoramic sunroof</li></ul>
<b>Front/rear electric windows</b>	Front •/Rear •
<b>One-touch window lifting function</b>	<ul style="list-style-type: none"><li>• Full car</li></ul>
<b>Window anti-pinch function</b>	<ul style="list-style-type: none"><li>•</li></ul>
<b>Car makeup mirror</b>	<ul style="list-style-type: none"><li>• Main driver's lamp;</li><li>• co-pilot's lamp</li></ul>
<b>Rear wiper</b>	<ul style="list-style-type: none"><li>•</li></ul>
<b>Rain sensor wiper function</b>	<ul style="list-style-type: none"><li>• Rainfall-sensing</li></ul>
<b>Rear side privacy glass</b>	<ul style="list-style-type: none"><li>•</li></ul>
<b>Side window multi-layer soundproof glass</b>	<ul style="list-style-type: none"><li>• Full car</li></ul>

## Interior and exterior color

<b>Exterior Color</b>	Tech Blue:#6E83B7;Deep Green:#3F5A4B; White:#FFFFFF; Black:#040404;Baby Blue Special Edition Pearl Paint:#A7C7F0; Silver:#C7C7C7; Grey:#B8B9B4
<b>Interior Color</b>	White:#FEFEFE; Brown:#8F7E74; Black:#000000

## Steering wheel/interior mirror

<b>Steering Wheel Material</b>	<ul style="list-style-type: none"><li>• Leather</li></ul>
<b>Steering wheel position adjustment</b>	<ul style="list-style-type: none"><li>• Manual up and down front and rear adjustment</li></ul>
<b>Multi-function steering wheel</b>	<ul style="list-style-type: none"><li>•</li></ul>
<b>Heated Steering Wheel</b>	<ul style="list-style-type: none"><li>•</li></ul>
<b>Steering wheel memory</b>	-
<b>Trip computer display screen</b>	<ul style="list-style-type: none"><li>• Color</li></ul>
<b>Full LCD instrument panel</b>	<ul style="list-style-type: none"><li>•</li></ul>
<b>LCD instrument size</b>	<ul style="list-style-type: none"><li>• 12.3 inches</li></ul>
<b>Interior rearview mirror function</b>	<ul style="list-style-type: none"><li>• Automatic anti-glare</li></ul>
<b>Gear shifting</b>	<ul style="list-style-type: none"><li>• Electronic gear shift</li></ul>

## Intelligent configuration

<b>Connected Car Services</b>	<ul style="list-style-type: none"><li>•</li></ul>
<b>OTA Updates</b>	<ul style="list-style-type: none"><li>•</li></ul>
<b>4G/5G Network</b>	<ul style="list-style-type: none"><li>•4G</li></ul>
<b>Mobile APP remote function</b>	<ul style="list-style-type: none"><li>• Door control;</li><li>• Vehicle start-up;</li><li>• Charging management;</li><li>• Vehicle status inquiry/diagnosis;</li><li>• Vehicle location/vehicle finding;</li><li>• Scheduled maintenance/repair</li></ul>

## Driving Control

<b>Driving mode switch</b>	<ul style="list-style-type: none"><li>•Sports;</li><li>•Economy;</li><li>•Off-road;</li><li>•Snowy conditions</li></ul>
<b>Automatic parking</b>	<ul style="list-style-type: none"><li>•</li></ul>
<b>Steep slope descent</b>	<ul style="list-style-type: none"><li>•</li></ul>
<b>Hill start assist</b>	<ul style="list-style-type: none"><li>•</li></ul>
<b>Energy recovery system</b>	<ul style="list-style-type: none"><li>•</li></ul>
<b>Variable suspension function</b>	<ul style="list-style-type: none"><li>• Soft and hard adjustment of suspension</li></ul>

## Driving Hardware

<b>Front/rear parking radar</b>	Front •/Rear •
<b>Driving Assistance Camera System</b>	<ul style="list-style-type: none"><li>• 360-degree panoramic image</li></ul>
<b>Number of cameras</b>	<ul style="list-style-type: none"><li>• 5</li></ul>
<b>Number of ultrasonic radars</b>	<ul style="list-style-type: none"><li>• 12</li></ul>

## Driving Hardware (continued)

<b>Millimeter wave radar quantity</b>	• 5
<b>Assisted driving chip</b>	• Horizon Journey 3
<b>Total chip computing power</b>	•10 TOPS

## In-car charging

<b>Multimedia/charging port</b>	•USB;•SD;•Type-C
<b>Number of USB/Type-C ports</b>	• 2 in the front row/5 in the back row
<b>Mobile phone wireless charging function</b>	• Front row
<b>Luggage compartment 12V power socket</b>	•

## Optional Package

<b>Optional Package</b>	Special Edition Car Paint (USD 1,471; Optional: Tech Blue, Deep Green, Baby Blue Special Edition Car Paint)
-------------------------	---

---

"●" = Standard equipment

"-" = Not available

"○" = Optional equipment.

Note: These are Chinese market vehicles. Warranty coverage is not available outside of China.