

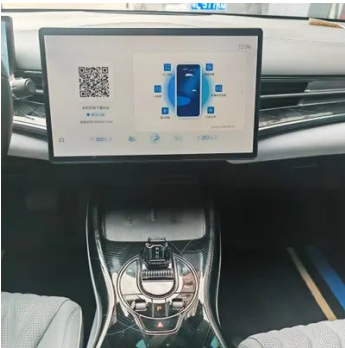
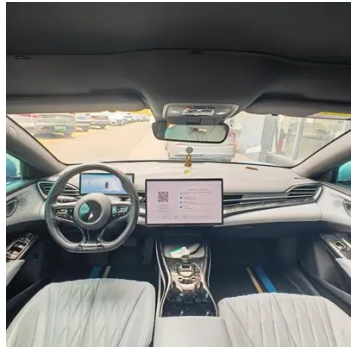
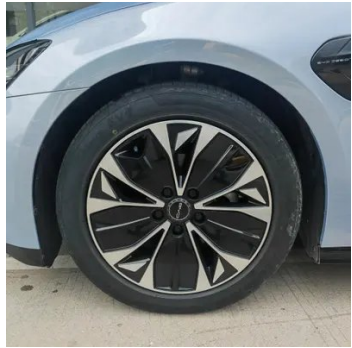
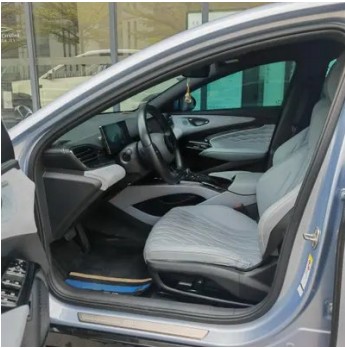
# Vehicle Detail Report

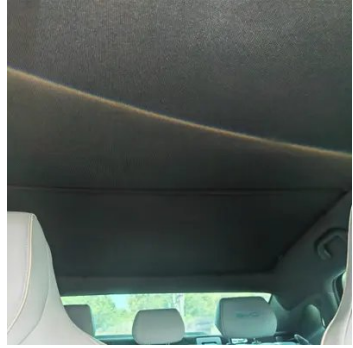
## BYD Seal 2022 550KM Standard Endurance Rear Drive Edition Elite

### Basic Information

Brand	BYD
Mileage	65,000 km
Color	Blue
First Registration	2023-05-01
Transfer Count	0

### Vehicle Images





## Configuration Information

### Model Information

<b>Model Name</b>	Seal 2022 550km Standard Endurance Rear Drive Elite Model
<b>Launch Date</b>	2022.07

### Basic parameters

<b>Vehicle Class</b>	Mid-size car
<b>Energy Type</b>	Battery Electric Vehicle (BEV)
<b>Maximum Power (kW)</b>	150
<b>Maximum Torque (N·m)</b>	310
<b>Body Type</b>	Sedan
<b>Dimensions (L×W×H) (mm)</b>	4800*1875*1460
<b>Official 0-100 km/h Acceleration (s)</b>	7.5
<b>Top Speed (km/h)</b>	180
<b>Curb Weight (kg)</b>	1885

## Basic parameters (continued)

<b>Maximum Gross Weight (kg)</b>	2260
<b>Fast Charging Time (h)</b>	0.5
<b>Electric Motor (PS)</b>	204
<b>Fast Charging Range (%)</b>	80
<b>Electricity Consumption in Fuel Equivalent (L/100km)</b>	1.43
<b>CLTC Electric Range (km)</b>	550

## Electric Motor

<b>Motor Type</b>	Permanent magnet/synchronous
<b>Total Electric Motor Power (kW)</b>	150
<b>Total Electric Motor Torque (N·m)</b>	310
<b>Number of drive motors</b>	Single motor
<b>Motor Layout</b>	Rear
<b>Battery Type</b>	Lithium iron phosphate battery
<b>Battery Capacity (kWh)</b>	61.4
<b>Total Electric Motor Power (PS)</b>	204
<b>Rear Electric Motor Max Power (kW)</b>	150
<b>Rear Electric Motor Max Torque (N·m)</b>	310
<b>Battery Cell Brand</b>	Fodi
<b>Battery Cooling System</b>	Liquid cooling
<b>Power consumption per 100 kilometers (kWh/100km)</b>	12.6
<b>Fast charging function</b>	Support
<b>Fast Charging Power (kW)</b>	110

## Screen/System

<b>Central control color screen</b>	<ul style="list-style-type: none"><li>• Touch LCD screen</li></ul>
<b>Infotainment Screen Size</b>	<ul style="list-style-type: none"><li>• 15.6 inches</li></ul>
<b>Bluetooth/In-car Phone</b>	<ul style="list-style-type: none"><li>•</li></ul>
<b>Voice recognition control system</b>	<ul style="list-style-type: none"><li>• Multimedia system;</li><li>• Navigation;</li><li>• Telephone;</li><li>• Air conditioning</li></ul>

## Screen/System (continued)

<b>In-vehicle intelligent system</b>	•DiLink
<b>Rotating large screen</b>	•

## Body

<b>Length (mm)</b>	4800
<b>Width (mm)</b>	1875
<b>Height (mm)</b>	1460
<b>Wheelbase (mm)</b>	2920
<b>Front Track (mm)</b>	1620
<b>Rear Track (mm)</b>	1625
<b>Door Opening Type</b>	swing door
<b>Number of Doors</b>	4
<b>Number of Seats</b>	5
<b>Trunk volume (L)</b>	-
<b>Drag Coefficient (Cd)</b>	0.219
<b>Approach Angle (°)</b>	13
<b>Departure Angle (°)</b>	14
<b>Minimum Turning Radius (m)</b>	5.7

## Gearbox

<b>Abbreviation</b>	Electric vehicle single speed gearbox
<b>Number of Gears</b>	1
<b>Transmission Type</b>	Fixed Gear Ratio Transmission

## Chassis steering

<b>Drive Type</b>	Rear-engine, Rear-wheel drive (RR)
<b>Front Suspension Type</b>	Double wishbone independent suspension
<b>Rear Suspension Type</b>	Five-link independent suspension
<b>Power Steering Type</b>	Electric power assistance
<b>Vehicle structure</b>	bearing type

## Seat Configuration

<b>Seat Material</b>	• Imitation leather
<b>Main seat adjustment</b>	• Front and rear adjustment; • Backrest adjustment; • Height adjustment (4-way)

## Seat Configuration (continued)

<b>Co-seat adjustment method</b>	<ul style="list-style-type: none"><li>• Front and rear adjustment;</li><li>• Backrest adjustment;</li><li>• Height adjustment (2-way)</li></ul>
<b>Electric adjustment of driver's seat and passenger seat</b>	Main •/Deputy •
<b>Front passenger seat rear adjustable buttons</b>	-
<b>Rear seat folding</b>	<ul style="list-style-type: none"><li>• Proportional down</li></ul>
<b>Front/rear center armrest</b>	Front •/Rear •
<b>Rear cup holder</b>	<ul style="list-style-type: none"><li>•</li></ul>

## Active safety

<b>Anti-lock Braking System (ABS)</b>	<ul style="list-style-type: none"><li>•</li></ul>
<b>Electronic Brakeforce Distribution (EBD/CBC)</b>	<ul style="list-style-type: none"><li>•</li></ul>
<b>Brake Assist System (EBA/BAS/BA)</b>	<ul style="list-style-type: none"><li>•</li></ul>
<b>Traction Control System (ASR/TCS/TRC)</b>	<ul style="list-style-type: none"><li>•</li></ul>
<b>Electronic Stability Control (ESC/ESP/DSC)</b>	<ul style="list-style-type: none"><li>•</li></ul>
<b>Tire Pressure Monitoring System (TPMS)</b>	<ul style="list-style-type: none"><li>• Tire pressure display</li></ul>
<b>Seat Belt Reminder</b>	<ul style="list-style-type: none"><li>• Front row</li></ul>
<b>ISOFIX Child Seat Anchors</b>	<ul style="list-style-type: none"><li>•</li></ul>
<b>Lane Departure Warning System (LDWS)</b>	<ul style="list-style-type: none"><li>•</li></ul>
<b>Autonomous Emergency Braking (AEB)</b>	<ul style="list-style-type: none"><li>•</li></ul>
<b>Driver Fatigue Detection</b>	-
<b>Forward Collision Warning (FCW)</b>	<ul style="list-style-type: none"><li>•</li></ul>
<b>Rear Collision Warning</b>	<ul style="list-style-type: none"><li>•</li></ul>
<b>Low Speed Alert</b>	<ul style="list-style-type: none"><li>•</li></ul>
<b>Emergency Call System (eCall)</b>	<ul style="list-style-type: none"><li>•</li></ul>
<b>Built-in Dashcam</b>	<ul style="list-style-type: none"><li>•</li></ul>
<b>Door Opening Warning (DOW)</b>	<ul style="list-style-type: none"><li>•</li></ul>

## Air conditioning/refrigerator

## Air conditioning/refrigerator (continued)

<b>Air conditioning temperature control method</b>	• Automatic air conditioning
<b>Rear Independent Climate Control</b>	-
<b>Rear seat air vents</b>	•
<b>Temperature zone control</b>	•
<b>Car air purifier</b>	•
<b>In-cabin PM2.5 Filter</b>	•
<b>Negative ion generator</b>	•
<b>Heat pump air conditioner</b>	•

## Passive safety

<b>Driver/passenger airbag</b>	Main •/Deputy •
<b>Front/rear side airbags</b>	Front •/Rear •
<b>Front/rear head airbags (curtain airbags)</b>	Front •/Rear •
<b>Knee airbag</b>	• Main driver knee airbag

## Wheel brake

<b>Front Brake Type</b>	Ventilation disc
<b>Rear Brake Type</b>	Ventilation disc
<b>Parking brake type</b>	Electronic Parking
<b>Front Tire Size</b>	225/50 R18
<b>Rear Tire Size</b>	225/50 R18
<b>Spare Tire Size</b>	Tire repair tools

## Audio/Interior Lighting

<b>Number of speakers</b>	• 10 speakers
<b>Touch reading light</b>	•

## Driving functions

<b>Navigation traffic information display</b>	•
<b>Lane assist</b>	•
<b>Lane Keeping Assist System</b>	•
<b>Cruise control system</b>	• Full speed adaptive cruise
<b>Satellite navigation system</b>	•
<b>Driving assistance level</b>	•L2

## Driving functions (continued)

<b>Rear Cross Traffic Alert</b>	<ul style="list-style-type: none"><li>•</li></ul>
<b>Lane centering</b>	<ul style="list-style-type: none"><li>•</li></ul>
<b>Road traffic sign recognition</b>	<ul style="list-style-type: none"><li>•</li></ul>
<b>Map Brand</b>	<ul style="list-style-type: none"><li>• Gaud</li></ul>
<b>Remote Parking</b>	<ul style="list-style-type: none"><li>•</li></ul>
<b>Parking Assist</b>	-

## Exterior lighting

<b>Low beam light source</b>	<ul style="list-style-type: none"><li>•LED</li></ul>
<b>High beam light source</b>	<ul style="list-style-type: none"><li>•LED</li></ul>
<b>LED daytime running lights</b>	<ul style="list-style-type: none"><li>•</li></ul>
<b>Adaptive high and low beam</b>	<ul style="list-style-type: none"><li>•</li></ul>
<b>Automatic headlights</b>	<ul style="list-style-type: none"><li>•</li></ul>
<b>Height-adjustable headlights</b>	<ul style="list-style-type: none"><li>•</li></ul>
<b>Headlight Delay Off</b>	<ul style="list-style-type: none"><li>•</li></ul>
<b>Lighting features</b>	<ul style="list-style-type: none"><li>• Matrix</li></ul>
<b>Headlight rain and fog mode</b>	<ul style="list-style-type: none"><li>•</li></ul>

## Exterior mirrors

<b>Exterior mirror function</b>	<ul style="list-style-type: none"><li>• Electric adjustment;</li><li>• Electric folding;</li><li>• Rearview mirror heating;</li><li>• Automatic folding when locked</li></ul>
---------------------------------	---

## Appearance/anti-theft

<b>Rim material</b>	<ul style="list-style-type: none"><li>• Aluminum alloy</li></ul>
<b>Electric trunk</b>	-
<b>Central locking system in the car</b>	<ul style="list-style-type: none"><li>•</li></ul>
<b>Key Type</b>	<ul style="list-style-type: none"><li>• Remote key;</li><li>• Bluetooth key;</li><li>• NFC/RFID key</li></ul>
<b>Keyless start system</b>	<ul style="list-style-type: none"><li>•</li></ul>
<b>Keyless entry function</b>	<ul style="list-style-type: none"><li>• Front row</li></ul>
<b>Remote start function</b>	<ul style="list-style-type: none"><li>•</li></ul>
<b>Battery preheating</b>	<ul style="list-style-type: none"><li>•</li></ul>
<b>Active closed grille</b>	<ul style="list-style-type: none"><li>•</li></ul>

## Appearance/anti-theft (continued)

<b>Hidden electric door handle</b>	<ul style="list-style-type: none"><li>•</li></ul>
<b>Discharge to the outside</b>	<ul style="list-style-type: none"><li>•</li></ul>

## Skylight/Glass

<b>Sunroof Type</b>	<ul style="list-style-type: none"><li>• Panoramic sunroof cannot be opened</li></ul>
<b>Front/rear electric windows</b>	Front •/Rear •
<b>One-touch window lifting function</b>	<ul style="list-style-type: none"><li>• Full car</li></ul>
<b>Window anti-pinch function</b>	<ul style="list-style-type: none"><li>•</li></ul>
<b>Car makeup mirror</b>	<ul style="list-style-type: none"><li>• Main driver's lamp; • co-pilot's lamp</li></ul>
<b>Rear wiper</b>	-
<b>Rain sensor wiper function</b>	<ul style="list-style-type: none"><li>• Rainfall-sensing</li></ul>
<b>Side window multi-layer soundproof glass</b>	<ul style="list-style-type: none"><li>• Front row</li></ul>

## Interior and exterior color

<b>Exterior Color</b>	Atlantis gray:#55728C; North ice blue:#879DB2; Wind curls grass green:#7E9286; Sea lens blue:#8FA0A8; Aurora white:#FFFFFF; Lost ash:#75747E; Xuan kong black:#000000
<b>Interior Color</b>	Tasiti blue:#E1E1F5; Shell white:#FFFFFF; Pontos black:#000000; Pruss brown:#785050; Taomas Black:#000000

## Steering wheel/interior mirror

<b>Steering Wheel Material</b>	<ul style="list-style-type: none"><li>• Cortex</li></ul>
<b>Steering wheel position adjustment</b>	<ul style="list-style-type: none"><li>• Manual up and down front and rear adjustment</li></ul>
<b>Multi-function steering wheel</b>	<ul style="list-style-type: none"><li>•</li></ul>
<b>Heated Steering Wheel</b>	-
<b>Steering wheel memory</b>	-
<b>Trip computer display screen</b>	<ul style="list-style-type: none"><li>• Color</li></ul>
<b>Full LCD instrument panel</b>	<ul style="list-style-type: none"><li>•</li></ul>

## Steering wheel/interior mirror (continued)

<b>LCD instrument size</b>	• 10.25 inches
<b>Interior rearview mirror function</b>	• Automatic anti-glare
<b>Gear shifting</b>	• Electronic gear shift

## Intelligent configuration

<b>Connected Car Services</b>	•
<b>OTA Updates</b>	•
<b>4G/5G Network</b>	•5G
<b>Mobile APP remote function</b>	• Door control; • Vehicle start-up; • Charging management; • Air conditioning control; • Vehicle condition inquiry/diagnosis; • Vehicle owner service (find charging pile, gas station, parking lot, etc.); • Appointment maintenance/repair
<b>Wi-Fi hotspots</b>	•

## Driving Control

<b>Driving mode switch</b>	• Sport; • Economy; • Standard/Comfort; • Snow
<b>Automatic parking</b>	•
<b>Hill start assist</b>	•
<b>Energy recovery system</b>	•

## Driving Hardware

<b>Front/rear parking radar</b>	Front •/Rear •
<b>Driving Assistance Camera System</b>	• 360-degree panoramic image
<b>Number of cameras</b>	• 5
<b>Number of ultrasonic radars</b>	• 6
<b>Transparent chassis/540-degree imaging</b>	•
<b>Millimeter wave radar quantity</b>	• 3
<b>Number of cameras in the car</b>	• 1

## In-car charging

<b>Multimedia/charging port</b>	•USB;•SD
<b>Number of USB/Type-C ports</b>	• 2 in the front row/2 in the back row

## In-car charging (continued)

### Mobile phone wireless charging function

- Front row

"●" = Standard equipment

"\_" = Not available

"○" = Optional equipment.

Note: These are Chinese market vehicles. Warranty coverage is not available outside of China.