

# Vehicle Detail Report

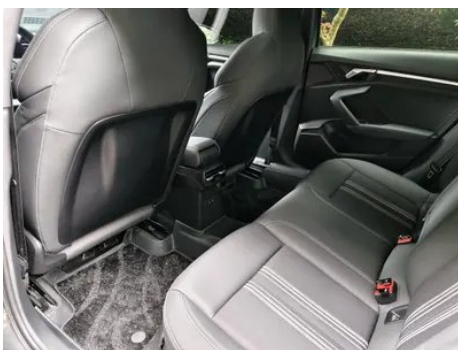
## Audi A3 2024 A3L Limousine 35 TFSI Fashion Sport

### Basic Information

Brand	Audi
Mileage	19,600 km
Color	Dark gray
First Registration	2024-09-01
Transfer Count	0

### Vehicle Images







## Vehicle Condition

1. Original metal body panels with factory paint.

## Configuration Information

### Model Information

<b>Model Name</b>	Audi A3 2024 A3L Limousine 35 TFSI Fashion Sport
<b>Launch Date</b>	2023.10

### Basic parameters

<b>Vehicle Class</b>	compact car
<b>Energy Type</b>	Gasoline
<b>Maximum Power (kW)</b>	110
<b>Maximum Torque (N·m)</b>	250
<b>Transmission</b>	7-speed dry dual clutch
<b>Body Type</b>	Sedan
<b>Engine</b>	1.4L 150 hp L4
<b>Dimensions (L×W×H) (mm)</b>	4554*1814*1429
<b>Official 0-100 km/h Acceleration (s)</b>	9.1
<b>Top Speed (km/h)</b>	200
<b>Curb Weight (kg)</b>	1420
<b>Maximum Gross Weight (kg)</b>	1880
<b>WLTP Combined Fuel Consumption (L/100km)</b>	6.32

### engine

<b>Engine Model</b>	DLE
<b>Displacement (mL)</b>	1395
<b>Displacement (L)</b>	1.4
<b>Induction Type</b>	Turbocharging
<b>Cylinder Arrangement</b>	L

## engine (continued)

<b>Number of Cylinders</b>	4
<b>Valves per Cylinder</b>	4
<b>Valve Train</b>	DOHC
<b>Maximum Power (PS)</b>	150
<b>Max Power Speed (rpm)</b>	5000-6000
<b>Max Torque Speed (rpm)</b>	1750-3000
<b>Maximum net power (kW)</b>	110
<b>Fuel Grade</b>	95.
<b>Fuel Delivery System</b>	Direct injection
<b>Cylinder Head Material</b>	Aluminum alloy
<b>Cylinder Block Material</b>	Aluminum alloy
<b>Engine layout</b>	Horizontal

## Screen/System

<b>Central control color screen</b>	<ul style="list-style-type: none"><li>• Touch LCD screen</li></ul>
<b>Infotainment Screen Size</b>	<ul style="list-style-type: none"><li>• 10.1 inches</li></ul>
<b>Bluetooth/In-car Phone</b>	<ul style="list-style-type: none"><li>•</li></ul>
<b>Smartphone Integration/Mirroring</b>	<ul style="list-style-type: none"><li>• Apple CarPlay support;</li><li>• OEM smartphone integration/mirroring</li></ul>
<b>Voice recognition control system</b>	<ul style="list-style-type: none"><li>• Multimedia system;</li><li>○ Navigation;</li><li>• Telephone;</li><li>• Air conditioning</li></ul>
<b>Voice wake-up recognition by region</b>	<ul style="list-style-type: none"><li>• Dual Zone</li></ul>
<b>In-vehicle intelligent system</b>	<ul style="list-style-type: none"><li>• Audi Connect</li></ul>
<b>Touch screen vibration feedback</b>	<ul style="list-style-type: none"><li>•</li></ul>
<b>App Store</b>	<ul style="list-style-type: none"><li>•</li></ul>
<b>Voice assistant wake-up word</b>	Hey Audi

## Body

<b>Length (mm)</b>	4554
<b>Width (mm)</b>	1814
<b>Height (mm)</b>	1429
<b>Wheelbase (mm)</b>	2680
<b>Front Track (mm)</b>	1543
<b>Rear Track (mm)</b>	1514

## Body (continued)

<b>Door Opening Type</b>	swing door
<b>Number of Doors</b>	4
<b>Number of Seats</b>	5
<b>Fuel Tank Capacity (L)</b>	51
<b>Trunk volume (L)</b>	388
<b>Drag Coefficient (Cd)</b>	-
<b>Approach Angle (°)</b>	14
<b>Departure Angle (°)</b>	16

## Gearbox

<b>Abbreviation</b>	7-speed dry dual clutch
<b>Number of Gears</b>	7
<b>Transmission Type</b>	Dry Dual-Clutch Transmission (DCT)

## Chassis steering

<b>Drive Type</b>	Front-engine, Front-wheel drive (FF)
<b>Front Suspension Type</b>	MacPherson independent suspension
<b>Rear Suspension Type</b>	Multi-link independent suspension
<b>Power Steering Type</b>	Electric power assistance
<b>Vehicle structure</b>	bearing type

## Seat Configuration

<b>Seat Material</b>	<ul style="list-style-type: none"><li>• Mix and match of leather/fabric;</li><li>○ Mix and match of leather/suede materials (USD 882)</li></ul>
<b>Main seat adjustment</b>	<ul style="list-style-type: none"><li>• Front and rear adjustment;</li><li>• Backrest adjustment;</li><li>• Height adjustment (4-way);</li><li>• Leg rest adjustment;</li><li>• Lumbar support (4-way)</li></ul>
<b>Co-seat adjustment method</b>	<ul style="list-style-type: none"><li>• Front and rear adjustment;</li><li>• Backrest adjustment;</li><li>• Height adjustment (2-way);</li><li>○ Height adjustment (4-way);</li><li>• Leg rest adjustment;</li><li>○ Lumbar support (4-way)</li></ul>
<b>Electric adjustment of driver's seat and passenger seat</b>	Main •/Subordinate ○
<b>Front seat functions</b>	○ Heating (USD 294)
<b>Electric seat memory function</b>	○ Driving position

## Seat Configuration (continued)

<b>Front passenger seat rear adjustable buttons</b>	-
<b>Rear seat folding</b>	• Proportional down
<b>Front/rear center armrest</b>	Front •/Rear •
<b>Rear cup holder</b>	•
<b>Sports style seats</b>	•

## Active safety

<b>Anti-lock Braking System (ABS)</b>	•
<b>Electronic Brakeforce Distribution (EBD/CBC)</b>	•
<b>Brake Assist System (EBA/BAS/BA)</b>	•
<b>Traction Control System (ASR/TCS/TRC)</b>	•
<b>Electronic Stability Control (ESC/ESP/DSC)</b>	•
<b>Tire Pressure Monitoring System (TPMS)</b>	• Tire pressure alarm
<b>Seat Belt Reminder</b>	• Full vehicle
<b>ISOFIX Child Seat Anchors</b>	•
<b>Lane Departure Warning System (LDWS)</b>	•
<b>Autonomous Emergency Braking (AEB)</b>	•
<b>Driver Fatigue Detection</b>	•
<b>Forward Collision Warning (FCW)</b>	•
<b>Emergency Call System (eCall)</b>	•

## Air conditioning/refrigerator

<b>Air conditioning temperature control method</b>	• Automatic air conditioning
<b>Rear Independent Climate Control</b>	○(USD 294)
<b>Rear seat air vents</b>	•
<b>Temperature zone control</b>	•
<b>Car air purifier</b>	-
<b>In-cabin PM2.5 Filter</b>	•

## Passive safety

<b>Driver/passenger airbag</b>	Main •/Deputy •
<b>Front/rear side airbags</b>	Front/rear rear side airbag (USD 221)
<b>Front/rear head airbags (curtain airbags)</b>	Front •/Rear •

## Wheel brake

<b>Front Brake Type</b>	Ventilation disc
<b>Rear Brake Type</b>	Disc
<b>Parking brake type</b>	Electronic Parking
<b>Front Tire Size</b>	225/40 R18
<b>Rear Tire Size</b>	225/40 R18
<b>Spare Tire Size</b>	Not full-size
<b>Spare tire placement</b>	In the trunk

## Audio/Interior Lighting

<b>Speaker Brand Name</b>	<input type="radio"/> Bang & Olufsen(USD 882)
<b>Number of speakers</b>	• 8 horns; <input type="radio"/> 14 horns
<b>Interior ambient lighting</b>	• 30 colors
<b>Touch reading light</b>	•

## Driving functions

<b>Navigation traffic information display</b>	<input type="radio"/>
<b>Lane assist</b>	<input type="radio"/> (USD 235)
<b>Lane Keeping Assist System</b>	-
<b>Cruise control system</b>	• Full speed adaptive cruise
<b>Satellite navigation system</b>	<input type="radio"/> (USD 956)
<b>Rear Cross Traffic Alert</b>	<input type="radio"/> (USD 0)
<b>Parking Assist</b>	<input type="radio"/> (USD 368)

## Exterior lighting

<b>Low beam light source</b>	•LED
<b>High beam light source</b>	•LED
<b>LED daytime running lights</b>	•
<b>Adaptive high and low beam</b>	<input type="radio"/>
<b>Automatic headlights</b>	•

## Exterior lighting (continued)

<b>Height-adjustable headlights</b>	<ul style="list-style-type: none"><li>•</li></ul>
<b>Headlight Delay Off</b>	<ul style="list-style-type: none"><li>•</li></ul>
<b>Lighting features</b>	<ul style="list-style-type: none"><li>○ Matrix (USD 956)</li></ul>
<b>Headlight rain and fog mode</b>	<ul style="list-style-type: none"><li>•</li></ul>
<b>Headlight cleaning device</b>	<ul style="list-style-type: none"><li>○(USD 147)</li></ul>

## Exterior mirrors

<b>Exterior mirror function</b>	<ul style="list-style-type: none"><li>• Electric adjustment; ○ Electric folding; ○ Memory of rearview mirror; • Heating of rearview mirror; ○ Automatic downward turning when reversing; ○ Automatic folding when locking the car; ○ Automatic anti-glare</li></ul>
---------------------------------	---

## Appearance/anti-theft

<b>Rim material</b>	<ul style="list-style-type: none"><li>• Aluminum alloy</li></ul>
<b>Electronic engine immobilizer</b>	<ul style="list-style-type: none"><li>•</li></ul>
<b>Central locking system in the car</b>	<ul style="list-style-type: none"><li>•</li></ul>
<b>Key Type</b>	<ul style="list-style-type: none"><li>• Remote key</li></ul>
<b>Keyless start system</b>	<ul style="list-style-type: none"><li>•</li></ul>
<b>Keyless entry function</b>	<ul style="list-style-type: none"><li>○ Full vehicle (USD 294)</li></ul>
<b>Appearance Kit</b>	<ul style="list-style-type: none"><li>• Sports style</li></ul>
<b>Hands-free Trunk</b>	<ul style="list-style-type: none"><li>○(USD 294)</li></ul>

## Skylight/Glass

<b>Sunroof Type</b>	<ul style="list-style-type: none"><li>• Electric sunroof</li></ul>
<b>Front/rear electric windows</b>	Front •/Rear •
<b>One-touch window lifting function</b>	<ul style="list-style-type: none"><li>• Full vehicle</li></ul>
<b>Window anti-pinch function</b>	<ul style="list-style-type: none"><li>•</li></ul>
<b>Car makeup mirror</b>	<ul style="list-style-type: none"><li>• Main driver's lamp; • co-pilot's lamp</li></ul>
<b>Rear wiper</b>	-
<b>Rain sensor wiper function</b>	<ul style="list-style-type: none"><li>• Rainfall-sensing</li></ul>

## Interior and exterior color

## Interior and exterior color (continued)

<b>Exterior Color</b>	Gotland Green #001812 Glacier White #F6F6F6 Sky Cloud Gray #646464 Manganite Black #000000 Tango Red #9B1014 Kanas Green #A5B2A8 Camouflage green #254A31 Navarre Blue #011748 Hurricane Gray #281A11
<b>Interior Color</b>	Black:#000000

## Steering wheel/interior mirror

<b>Steering Wheel Material</b>	• Leather
<b>Steering wheel position adjustment</b>	• Manual up and down front and rear adjustment
<b>Multi-function steering wheel</b>	•
<b>Heated Steering Wheel</b>	○(USD 147)
<b>Steering wheel memory</b>	-
<b>Trip computer display screen</b>	• Color
<b>Full LCD instrument panel</b>	•
<b>LCD instrument size</b>	• 10.25 inches; ○ 12.3 inches (USD 294)
<b>Interior rearview mirror function</b>	• Manual anti-glare; ○ Automatic anti-glare (USD 221)
<b>Gear shifting</b>	• Electronic gear shift
<b>HUD Head Up Digital Display</b>	○(USD 1,250)
<b>ETC Device</b>	○(USD 74)
<b>Steering Wheel Shift Paddles</b>	•

## Intelligent configuration

<b>Connected Car Services</b>	•
<b>OTA Updates</b>	-
<b>4G/5G Network</b>	•4G
<b>Wi-Fi hotspots</b>	•

## Driving Control

<b>Driving mode switch</b>	• Sport; ○ Economy; ○ Standard/Comfort; ○ Customization/Personalization
<b>Automatic parking</b>	•
<b>Hill start assist</b>	•

## Driving Control (continued)

<b>Engine start-stop technology</b>	•
-------------------------------------	---

## Driving Hardware

<b>Front/rear parking radar</b>	Front •/Rear •
<b>Driving Assistance Camera System</b>	• Reversing image
<b>Front perception camera</b>	• Monocular
<b>Number of cameras</b>	• 2
<b>Number of ultrasonic radars</b>	• 8; ○ 12

## In-car charging

<b>Multimedia/charging port</b>	•Type-C
<b>Number of USB/Type-C ports</b>	• 3 in the front row/2 in the back row

---

"●" = Standard equipment

"\_" = Not available

"○" = Optional equipment.

Note: These are Chinese market vehicles. Warranty coverage is not available outside of China.