

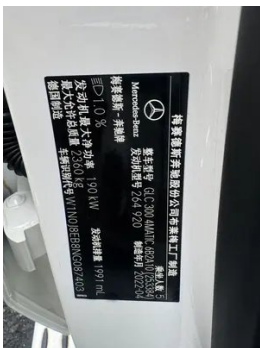
Vehicle Detail Report

Mercedes-Benz GLC Coupe 2022 GLC 300 4MATIC coupe SUV

Basic Information

| | |
|--------------------|---------------|
| Brand | Mercedes-Benz |
| Mileage | 23,000 km |
| Color | White |
| First Registration | 2022-08-01 |
| Transfer Count | 0 |

Vehicle Images





Vehicle Condition

1. Original metal body panels with factory paint.

Configuration Information

Model Information

| | |
|--------------------|--|
| Model Name | Mercedes-Benz GLC Coupe 2022 GLC 300 4MATIC coupe SUV |
| Launch Date | 2021.11 |

Basic parameters

| | |
|---|---------------------------|
| Vehicle Class | Mid-size SUV |
| Energy Type | Gasoline |
| Maximum Power (kW) | 190 |
| Maximum Torque (N·m) | 370 |
| Transmission | 9-gear manual integration |
| Body Type | SUV Crossover |
| Engine | 2.0T 258 horsepower L4 |
| Dimensions (L×W×H) (mm) | 4731*1898*1608 |
| Official 0-100 km/h Acceleration (s) | 6.7 |
| Top Speed (km/h) | 240 |
| Curb Weight (kg) | - |
| Maximum Gross Weight (kg) | - |
| WLTP Combined Fuel Consumption (L/100km) | 8.3 |

engine

| | |
|--------------------------------|------------------|
| Engine Model | 264 920 |
| Displacement (mL) | 1991 |
| Displacement (L) | 2.0 |
| Induction Type | Turbocharging |
| Cylinder Arrangement | L |
| Number of Cylinders | 4 |
| Valves per Cylinder | 4 |
| Valve Train | DOHC |
| Maximum Power (PS) | 258 |
| Max Power Speed (rpm) | 6100 |
| Max Torque Speed (rpm) | 1800-4000 |
| Maximum net power (kW) | 190 |
| Fuel Grade | 95. |
| Fuel Delivery System | Direct injection |
| Cylinder Head Material | Aluminum alloy |
| Cylinder Block Material | Aluminum alloy |
| Engine layout | Longitudinal |

Screen/System

| | |
|---|--|
| Central control color screen | <ul style="list-style-type: none">• Touch LCD screen |
| Infotainment Screen Size | <ul style="list-style-type: none">• 10.25 inches |
| Bluetooth/In-car Phone | <ul style="list-style-type: none">• |
| Smartphone Integration/Mirroring | <ul style="list-style-type: none">• Apple CarPlay support;• Baidu CarLife support |
| Voice recognition control system | <ul style="list-style-type: none">• Multimedia system;• Navigation;• Telephone;• Air conditioning |

Body

| | |
|--------------------------|------------|
| Length (mm) | 4731 |
| Width (mm) | 1898 |
| Height (mm) | 1608 |
| Wheelbase (mm) | 2873 |
| Front Track (mm) | - |
| Rear Track (mm) | - |
| Door Opening Type | swing door |
| Number of Doors | 5 |

Body (continued)

| | |
|-------------------------------|------|
| Number of Seats | 5 |
| Fuel Tank Capacity (L) | 66 |
| Trunk volume (L) | - |
| Drag Coefficient (Cd) | - |
| Approach Angle (°) | 23.6 |
| Departure Angle (°) | 20.6 |

Gearbox

| | |
|--------------------------|--|
| Abbreviation | 9-gear manual integration |
| Number of Gears | 9 |
| Transmission Type | Automatic Transmission with Manual Mode (AT) |

Chassis steering

| | |
|---------------------------------------|---------------------------------------|
| Drive Type | Front-engine, All-wheel drive (F-AWD) |
| Four-wheel drive | Full-time four-wheel drive |
| Central differential structure | Multi-plate clutch |
| Front Suspension Type | Multi-link independent suspension |
| Rear Suspension Type | Multi-link independent suspension |
| Power Steering Type | Electric power assistance |
| Vehicle structure | bearing type |

Seat Configuration

| | |
|--|--|
| Seat Material | • Imitation leather |
| Main seat adjustment | • Front and rear adjustment; • Backrest adjustment; • Height adjustment (4-way); • Leg rest adjustment; • Lumbar support (4-way) |
| Co-seat adjustment method | • Front and rear adjustment; • Backrest adjustment; • Height adjustment (4-way); • Leg rest adjustment; • Lumbar support (4-way) |
| Electric adjustment of driver's seat and passenger seat | Main •/Deputy • |
| Front seat functions | • Heating |
| Electric seat memory function | • Driving position |

Seat Configuration (continued)

| | |
|---|---------------------|
| Front passenger seat rear adjustable buttons | - |
| Rear seat folding | • Proportional down |
| Front/rear center armrest | Front •/Rear • |
| Rear cup holder | • |
| Second row seat functions | ○ Heating (USD 632) |

Active safety

| | |
|---|-------------------------|
| Anti-lock Braking System (ABS) | • |
| Electronic Brakeforce Distribution (EBD/CBC) | • |
| Brake Assist System (EBA/BAS/BA) | • |
| Traction Control System (ASR/TCS/TRC) | • |
| Electronic Stability Control (ESC/ESP/DSC) | • |
| Tire Pressure Monitoring System (TPMS) | • Tire pressure display |
| Seat Belt Reminder | • Front row |
| ISOFIX Child Seat Anchors | • |
| Lane Departure Warning System (LDWS) | • |
| Autonomous Emergency Braking (AEB) | • |
| Driver Fatigue Detection | • |
| Emergency Call System (eCall) | • |

Air conditioning/refrigerator

| | |
|--|------------------------------|
| Air conditioning temperature control method | • Automatic air conditioning |
| Rear Independent Climate Control | - |
| Rear seat air vents | • |
| Temperature zone control | • |
| Car air purifier | ○ |
| In-cabin PM2.5 Filter | ○ |
| Negative ion generator | ○ |

Air conditioning/refrigerator (continued)

| | |
|----------------------|---------------------------------|
| Car fragrance device | <input type="radio"/> (USD 647) |
|----------------------|---------------------------------|

Passive safety

| | |
|---|---------------------------------------|
| Driver/passenger airbag | Main •/Deputy • |
| Front/rear side airbags | Front/rear rear side airbag (USD 662) |
| Front/rear head airbags (curtain airbags) | Front •/Rear • |
| Run-flat tires | • |
| Knee airbag | • Driver's knee airbag |

Wheel brake

| | |
|--------------------|--------------------|
| Front Brake Type | Ventilation disc |
| Rear Brake Type | Ventilation disc |
| Parking brake type | Electronic Parking |
| Front Tire Size | 245/45 R19 |
| Rear Tire Size | 245/45 R19 |
| Spare Tire Size | None |

Audio/Interior Lighting

| | |
|---------------------------|---|
| Speaker Brand Name | <input type="radio"/> Voice of Burmester Berlin (USD 1,471) |
| Number of speakers | <input type="radio"/> 13 horn; • 8-9 horn |
| Interior ambient lighting | • 64 colors |

Driving functions

| | |
|--|-----------------------|
| Navigation traffic information display | <input type="radio"/> |
| Lane assist | • |
| Lane Keeping Assist System | • |
| Cruise control system | • Cruise control |
| Satellite navigation system | • |
| Parking Assist | • |

Exterior lighting

| | |
|----------------------------|-------|
| Low beam light source | • LED |
| High beam light source | • LED |
| LED daytime running lights | • |

Exterior lighting (continued)

| | |
|-------------------------------------|--|
| Adaptive high and low beam | <input type="radio"/> |
| Automatic headlights | <input checked="" type="checkbox"/> |
| Height-adjustable headlights | <input checked="" type="checkbox"/> |
| Headlight Delay Off | <input checked="" type="checkbox"/> |
| Lighting features | <input type="radio"/> MULTIBEAM LED headlights (USD 2,368) |
| Turn headlights | <input type="radio"/> |

Exterior mirrors

| | |
|---------------------------------|---|
| Exterior mirror function | <ul style="list-style-type: none">• Electric adjustment;• Electric folding;• Rearview mirror memory;• Rearview mirror heating;• Automatic downturning when reversing;• Automatic folding when locked;• Automatic anti-glare |
|---------------------------------|---|

Appearance/anti-theft

| | |
|--|--|
| Rim material | <ul style="list-style-type: none">• Aluminum alloy |
| Electric trunk | <input checked="" type="checkbox"/> |
| Electronic engine immobilizer | <input checked="" type="checkbox"/> |
| Central locking system in the car | <input checked="" type="checkbox"/> |
| Key Type | <ul style="list-style-type: none">• Remote key |
| Keyless start system | <input checked="" type="checkbox"/> |
| Keyless entry function | <ul style="list-style-type: none">• Full vehicle |
| Hands-free Trunk | <input checked="" type="checkbox"/> |
| Electric trunk position memory | <input checked="" type="checkbox"/> |
| Remote start function | <input checked="" type="checkbox"/> |
| Side pedals | <ul style="list-style-type: none">• Fixed |

Skylight/Glass

| | |
|--|---|
| Sunroof Type | <ul style="list-style-type: none">• Electric sunroof |
| Front/rear electric windows | Front <input checked="" type="checkbox"/> /Rear <input checked="" type="checkbox"/> |
| One-touch window lifting function | <ul style="list-style-type: none">• Full vehicle |
| Window anti-pinch function | <input checked="" type="checkbox"/> |

Skylight/Glass (continued)

| | |
|-----------------------------------|---|
| Car makeup mirror | <ul style="list-style-type: none">• Main driver's lamp; • co-pilot's lamp |
| Rear wiper | - |
| Rain sensor wiper function | <ul style="list-style-type: none">• Rainfall-sensing |
| Rear side privacy glass | <ul style="list-style-type: none">• |

Interior and exterior color

| | |
|-----------------------|--|
| Exterior Color | Gem blue #263963 Arctic White #FFFFFFE9 Zirconium Quartz Red #AF021C Hao Sha Yin #AAB4BE Graphite gray #B9B9B9 Spacetime Silver #B1B2B7 obsidian black #000000 Diamond White #EFEBEA |
| Interior Color | Black #000000 Black Saddle Brown #000000 #4D3536 Black Mumberry Red #000000 #6A3138 magma ash Black #A5A29B #000000 Silk Beige Coffee brown #C7BDB3 #262020 |

Steering wheel/interior mirror

| | |
|---|--|
| Steering Wheel Material | <ul style="list-style-type: none">• Leather |
| Steering wheel position adjustment | <ul style="list-style-type: none">• Electric up and down front and rear adjustment |
| Multi-function steering wheel | <ul style="list-style-type: none">• |
| Heated Steering Wheel | - |
| Steering wheel memory | <ul style="list-style-type: none">• |
| Trip computer display screen | <ul style="list-style-type: none">• Color |
| Full LCD instrument panel | <ul style="list-style-type: none">• |
| LCD instrument size | <ul style="list-style-type: none">• 12.3 inches |
| Interior rearview mirror function | <ul style="list-style-type: none">• Automatic anti-glare |
| Gear shifting | <ul style="list-style-type: none">• Electronic gear shift |
| HUD Head Up Digital Display | ○(USD 1,912) |
| Steering Wheel Shift Paddles | <ul style="list-style-type: none">• |

Intelligent configuration

| | |
|-------------------------------|---|
| Connected Car Services | <ul style="list-style-type: none">• |
| OTA Updates | <ul style="list-style-type: none">• |

Intelligent configuration (continued)

| | |
|-----------------------------------|---|
| 4G/5G Network | •4G |
| Mobile APP remote function | • Door control; • Vehicle start; • Vehicle status check/diagnostics; • Vehicle location / find my car |

Driving Control

| | |
|-------------------------------------|--|
| Driving mode switch | • Sport; • Economy; • Standard/Comfort |
| Automatic parking | • |
| Hill start assist | • |
| Variable steering ratio | • |
| Engine start-stop technology | • |

Driving Hardware

| | |
|---|------------------------------|
| Front/rear parking radar | Front •/Rear • |
| Driving Assistance Camera System | • 360-degree panoramic image |
| Front perception camera | • Monocular |
| Number of cameras | • 5 |
| Number of ultrasonic radars | • 12 |

In-car charging

| | |
|--|--|
| Multimedia/charging port | •Type-C |
| Number of USB/Type-C ports | • 2 in the front row/2 in the back row |
| Mobile phone wireless charging function | Front row (2700 yuan) |
| Luggage compartment 12V power socket | • |

"●" = Standard equipment

"-" = Not available

"○" = Optional equipment.

Note: These are Chinese market vehicles. Warranty coverage is not available outside of China.