

# Vehicle Detail Report

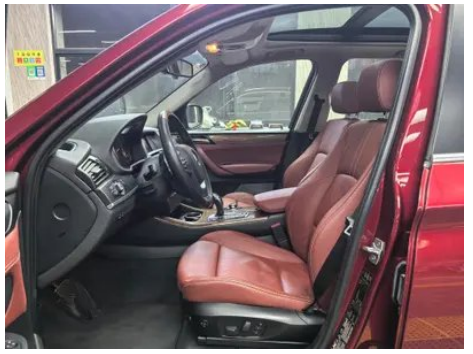
BMW X3 2013 xDrive35i Luxury type

## Basic Information

Brand	BMW
Mileage	113,000 km
Color	Red
First Registration	2013-08-01
Transfer Count	1

## Vehicle Images







## Vehicle Condition

1. Radiator support, Signs of removal. 2. Right front frame rail, Scratch. 3. Inner side of right A-pillar, Deformation.

## Configuration Information

### Model Information

<b>Model Name</b>	BMW X3 2013 xDrive35i Luxury type
<b>Launch Date</b>	2012.12

### Basic parameters

<b>Vehicle Class</b>	Mid-size SUV
<b>Energy Type</b>	Gasoline
<b>Maximum Power (kW)</b>	225
<b>Maximum Torque (N·m)</b>	400
<b>Transmission</b>	8-gear manual integration
<b>Body Type</b>	SUV
<b>Engine</b>	3.0L 306 hp L6
<b>Dimensions (L×W×H) (mm)</b>	4642*1881*1686
<b>Official 0-100 km/h Acceleration (s)</b>	5.7
<b>Top Speed (km/h)</b>	240
<b>Curb Weight (kg)</b>	1905
<b>Maximum Gross Weight (kg)</b>	-
<b>NEDC Combined Fuel Consumption (L/100km)</b>	8.9

### engine

<b>Engine Model</b>	N55B30
<b>Displacement (mL)</b>	2979
<b>Displacement (L)</b>	3.0
<b>Induction Type</b>	Turbocharging
<b>Cylinder Arrangement</b>	L

## engine (continued)

<b>Number of Cylinders</b>	6
<b>Valves per Cylinder</b>	4
<b>Compression Ratio</b>	10.2
<b>Valve Train</b>	DOHC
<b>Bore (mm)</b>	84
<b>Stroke (mm)</b>	89.6
<b>Maximum Power (PS)</b>	306
<b>Max Power Speed (rpm)</b>	5800-6000
<b>Max Torque Speed (rpm)</b>	1200-5000
<b>Maximum net power (kW)</b>	-
<b>Fuel Grade</b>	95.
<b>Fuel Delivery System</b>	Direct injection
<b>Cylinder Head Material</b>	Aluminum alloy
<b>Cylinder Block Material</b>	Aluminum alloy
<b>Engine-specific technologies</b>	Double VANOS/Valvetronic

## Screen/System

<b>Central control color screen</b>	<ul style="list-style-type: none"><li>•</li></ul>
<b>Bluetooth/In-car Phone</b>	<ul style="list-style-type: none"><li>•</li></ul>
<b>Car TV</b>	<ul style="list-style-type: none"><li>•</li></ul>
<b>In-car CD/DVD Player</b>	<ul style="list-style-type: none"><li>• Multi-Disc DVD System</li></ul>

## Body

<b>Length (mm)</b>	4642
<b>Width (mm)</b>	1881
<b>Height (mm)</b>	1686
<b>Wheelbase (mm)</b>	2810
<b>Front Track (mm)</b>	1616
<b>Rear Track (mm)</b>	1632
<b>Door Opening Type</b>	-
<b>Number of Doors</b>	5
<b>Number of Seats</b>	5
<b>Fuel Tank Capacity (L)</b>	67
<b>Trunk volume (L)</b>	-

## Body (continued)

<b>Drag Coefficient (Cd)</b>	-
------------------------------	---

## Gearbox

<b>Abbreviation</b>	8-gear manual integration
<b>Number of Gears</b>	8
<b>Transmission Type</b>	Automatic Transmission with Manual Mode (AT)

## Chassis steering

<b>Drive Type</b>	Front-engine, All-wheel drive (F-AWD)
<b>Four-wheel drive</b>	Full-time four-wheel drive
<b>Central differential structure</b>	Multi-plate clutch
<b>Front Suspension Type</b>	Dual-ball-joint MacPherson independent suspension
<b>Rear Suspension Type</b>	Five-link rear suspension
<b>Power Steering Type</b>	Electric power assistance
<b>Vehicle structure</b>	bearing type

## Seat Configuration

<b>Seat Material</b>	• Leather
<b>Main seat adjustment</b>	• Front and rear adjustment; • Backrest adjustment; • Height adjustment (2-way); • Height adjustment (4-way)
<b>Co-seat adjustment method</b>	• Front and rear adjustment; • Backrest adjustment
<b>Electric adjustment of driver's seat and passenger seat</b>	Main •/Deputy •
<b>Front seat functions</b>	• Heating
<b>Electric seat memory function</b>	•
<b>Front passenger seat rear adjustable buttons</b>	-
<b>Rear seat folding</b>	• Proportional down
<b>Front/rear center armrest</b>	Front •/Rear •
<b>Rear cup holder</b>	•
<b>Sports style seats</b>	•

## Active safety

## Active safety (continued)

<b>Anti-lock Braking System (ABS)</b>	•
<b>Electronic Brakeforce Distribution (EBD/CBC)</b>	•
<b>Brake Assist System (EBA/BAS/BA)</b>	•
<b>Traction Control System (ASR/TCS/TRC)</b>	•
<b>Electronic Stability Control (ESC/ESP/DSC)</b>	•
<b>Tire Pressure Monitoring System (TPMS)</b>	•
<b>Seat Belt Reminder</b>	•
<b>ISOFIX Child Seat Anchors</b>	•
<b>Lane Departure Warning System (LDWS)</b>	-
<b>Autonomous Emergency Braking (AEB)</b>	-
<b>Driver Fatigue Detection</b>	-

## Air conditioning/refrigerator

<b>Air conditioning temperature control method</b>	• Automatic air conditioning
<b>Rear Independent Climate Control</b>	-
<b>Rear seat air vents</b>	•
<b>Temperature zone control</b>	•
<b>Car air purifier</b>	-
<b>In-cabin PM2.5 Filter</b>	-

## Passive safety

<b>Driver/passenger airbag</b>	Main •/Deputy •
<b>Front/rear side airbags</b>	Front •/Rear •
<b>Front/rear head airbags (curtain airbags)</b>	Front •/Rear •
<b>Run-flat tires</b>	•

## Wheel brake

<b>Front Brake Type</b>	Ventilation disc
<b>Rear Brake Type</b>	Ventilation disc
<b>Parking brake type</b>	Electronic Parking

## Wheel brake (continued)

<b>Front Tire Size</b>	245/45 R19
<b>Rear Tire Size</b>	275/40 R19
<b>Spare Tire Size</b>	None

## Audio/Interior Lighting

<b>Number of speakers</b>	• 8-9 speakers
---------------------------	----------------

## Driving functions

<b>Navigation traffic information display</b>	-
<b>Lane assist</b>	-
<b>Lane Keeping Assist System</b>	-
<b>Cruise control system</b>	• Cruise control
<b>Satellite navigation system</b>	•
<b>Parking Assist</b>	-

## Exterior lighting

<b>Low beam light source</b>	• Xenon
<b>High beam light source</b>	• Xenon
<b>LED daytime running lights</b>	•
<b>Adaptive high and low beam</b>	-
<b>Automatic headlights</b>	•
<b>Front fog lights</b>	•
<b>Height-adjustable headlights</b>	•
<b>Headlight Delay Off</b>	-
<b>Turn headlights</b>	•
<b>Headlight cleaning device</b>	•

## Exterior mirrors

<b>Exterior mirror function</b>	• Electric adjustment; • Electric folding; • Rearview mirror memory; • Rearview mirror heating; • Automatic anti-glare
---------------------------------	--

## Appearance/anti-theft

<b>Rim material</b>	• Aluminum alloy
<b>Electric trunk</b>	•

## Appearance/anti-theft (continued)

<b>Electronic engine immobilizer</b>	<ul style="list-style-type: none"><li>•</li></ul>
<b>Central locking system in the car</b>	<ul style="list-style-type: none"><li>•</li></ul>
<b>Key Type</b>	<ul style="list-style-type: none"><li>• Remote key</li></ul>
<b>Keyless start system</b>	<ul style="list-style-type: none"><li>•</li></ul>
<b>Keyless entry function</b>	<ul style="list-style-type: none"><li>•</li></ul>

## Skylight/Glass

<b>Sunroof Type</b>	<ul style="list-style-type: none"><li>• Panoramic sunroof</li></ul>
<b>Front/rear electric windows</b>	Front •/Rear •
<b>Window anti-pinch function</b>	<ul style="list-style-type: none"><li>•</li></ul>
<b>Car makeup mirror</b>	<ul style="list-style-type: none"><li>•</li></ul>
<b>Rear wiper</b>	<ul style="list-style-type: none"><li>•</li></ul>
<b>Rain sensor wiper function</b>	<ul style="list-style-type: none"><li>•</li></ul>

## Interior and exterior color

<b>Exterior Color</b>	Gem Green #242224 ore silver #D4DAD4 flash brown #837F71 Deep Sea Blue #263756 Water blue #B3C0C9 Space gray #8B989C Titan Silver #D9DCDC Cinnabar red #6E1D1A Snow Mountain White #FAFAFA
-----------------------	--

## Steering wheel/interior mirror

<b>Steering Wheel Material</b>	<ul style="list-style-type: none"><li>• Cortex</li></ul>
<b>Steering wheel position adjustment</b>	<ul style="list-style-type: none"><li>• Manual up and down front and rear adjustment</li></ul>
<b>Multi-function steering wheel</b>	<ul style="list-style-type: none"><li>•</li></ul>
<b>Heated Steering Wheel</b>	○
<b>Steering wheel memory</b>	-
<b>Trip computer display screen</b>	<ul style="list-style-type: none"><li>•</li></ul>
<b>Full LCD instrument panel</b>	-
<b>Interior rearview mirror function</b>	<ul style="list-style-type: none"><li>• Automatic anti-glare</li></ul>
<b>HUD Head Up Digital Display</b>	<ul style="list-style-type: none"><li>•</li></ul>

## Steering wheel/interior mirror (continued)

<b>Steering Wheel Shift Paddles</b>	•
-------------------------------------	---

## Intelligent configuration

<b>Connected Car Services</b>	-
-------------------------------	---

<b>OTA Updates</b>	-
--------------------	---

## Driving Control

<b>Automatic parking</b>	•
--------------------------	---

<b>Steep slope descent</b>	•
----------------------------	---

<b>Hill start assist</b>	•
--------------------------	---

<b>Variable suspension function</b>	• Suspension damping adjustment
-------------------------------------	---------------------------------

<b>Variable steering ratio</b>	•
--------------------------------	---

<b>Engine start-stop technology</b>	•
-------------------------------------	---

## Driving Hardware

<b>Front/rear parking radar</b>	Front •/Rear •
---------------------------------	----------------

<b>Driving Assistance Camera System</b>	• Reversing image
---	-------------------

---

"●" = Standard equipment

"-" = Not available

"○" = Optional equipment.

Note: These are Chinese market vehicles. Warranty coverage is not available outside of China.